



# BEA WebLogic Platform™

## Installing BEA WebLogic Platform

# Copyright

Copyright © 2006 BEA Systems, Inc. All Rights Reserved.

## Restricted Rights Legend

This software and documentation is subject to and made available only pursuant to the terms of the BEA Systems License Agreement and may be used or copied only in accordance with the terms of that agreement. It is against the law to copy the software except as specifically allowed in the agreement. This document may not, in whole or in part, be copied, photocopied, reproduced, translated, or reduced to any electronic medium or machine readable form without prior consent, in writing, from BEA Systems, Inc.

Use, duplication or disclosure by the U.S. Government is subject to restrictions set forth in the BEA Systems License Agreement and in subparagraph (c)(1) of the Commercial Computer Software-Restricted Rights Clause at FAR 52.227-19; subparagraph (c)(1)(ii) of the Rights in Technical Data and Computer Software clause at DFARS 252.227-7013, subparagraph (d) of the Commercial Computer Software--Licensing clause at NASA FAR supplement 16-52.227-86; or their equivalent.

Information in this document is subject to change without notice and does not represent a commitment on the part of BEA Systems. THE SOFTWARE AND DOCUMENTATION ARE PROVIDED "AS IS" WITHOUT WARRANTY OF ANY KIND INCLUDING WITHOUT LIMITATION, ANY WARRANTY OF MERCHANTABILITY OR FITNESS FOR A PARTICULAR PURPOSE. FURTHER, BEA Systems DOES NOT WARRANT, GUARANTEE, OR MAKE ANY REPRESENTATIONS REGARDING THE USE, OR THE RESULTS OF THE USE, OF THE SOFTWARE OR WRITTEN MATERIAL IN TERMS OF CORRECTNESS, ACCURACY, RELIABILITY, OR OTHERWISE.

## Trademarks or Service Marks

BEA, BEA Liquid Data for WebLogic, BEA WebLogic Server, Built on BEA, Jolt, JoltBeans, SteelThread, Top End, Tuxedo, and WebLogic are registered trademarks of BEA Systems, Inc. BEA Builder, BEA Campaign Manager for WebLogic, BEA eLink, BEA Manager, BEA MessageQ, BEA WebLogic Commerce Server, BEA WebLogic Enterprise, BEA WebLogic Enterprise Platform, BEA WebLogic Enterprise Security, BEA WebLogic Express, BEA WebLogic Integration, BEA WebLogic Java Adapter for Mainframe, BEA WebLogic JDriver, BEA WebLogic JRockit, BEA WebLogic Log Central, BEA WebLogic Personalization Server, BEA WebLogic Platform, BEA WebLogic Portal, BEA WebLogic Server Process Edition, BEA WebLogic WorkGroup Edition, BEA WebLogic Workshop, and Liquid Computing are trademarks of BEA Systems, Inc. BEA Mission Critical Support is a service mark of BEA Systems, Inc. All other company and product names may be the subject of intellectual property rights reserved by third parties.

All other trademarks are the property of their respective companies.

# Contents

## About This Document

Audience .....	x
e-docs Web Site .....	x
How to Print the Document .....	x
Related Information .....	x
Contact Us! .....	xi
Documentation Conventions .....	xi

## 1. Preparing to Install WebLogic Platform

About BEA WebLogic Platform Installation .....	1-2
WebLogic Express Support .....	1-2
Installation Methods .....	1-2
WebLogic Platform Software Components .....	1-3
WebLogic Server and WebLogic Workshop .....	1-4
WebLogic Integration .....	1-4
EDI Integration .....	1-5
WebLogic Portal .....	1-5
WebLogic Platform Samples and Utilities .....	1-6
WebLogic Integration Complementary Products .....	1-6
WebLogic Platform Distribution Methods .....	1-7
Web Distribution of WebLogic Platform .....	1-7
CD-ROM Distribution of WebLogic Platform .....	1-8

Web Distribution of Service Packs and Rolling Patches . . . . .	1-9
About BEA WebLogic JRockit 7.0 . . . . .	1-9
Installation Prerequisites . . . . .	1-10
System Requirements . . . . .	1-11
Temporary Disk Space Requirements . . . . .	1-12
Administrator Privileges . . . . .	1-13
Licensing and Encryption . . . . .	1-14
About 128-Bit Encryption . . . . .	1-14
Choosing the Type of Installation . . . . .	1-14
Selecting Directories for the WebLogic Platform Installation . . . . .	1-15
Choosing a BEA Home Directory . . . . .	1-15
Understanding the Functions of the BEA Home Directory . . . . .	1-17
Creating Multiple BEA Home Directories . . . . .	1-18
Choosing a Product Installation Directory . . . . .	1-18
Choosing a User Domain Directory . . . . .	1-19
Generating a Verbose Installation Log . . . . .	1-19
Syntax . . . . .	1-20
Where to Find Upgrade and Migration Information . . . . .	1-20
About Smart Update . . . . .	1-20

## 2. Installing WebLogic Platform Using Graphical-Mode Installation

Before You Start . . . . .	2-1
Starting the Installation Program in Graphical Mode on Windows Platforms . . . . .	2-2
Starting the Installation Program in Graphical Mode on UNIX Platforms . . . . .	2-3
Starting Graphical-Mode Installation for .bin Installation Files . . . . .	2-4
Starting Graphical-Mode Installation for .jar Installation Files . . . . .	2-5
Running the Installation Program . . . . .	2-6

Using the Configuration Wizard .....	2-9
Configuration Options .....	2-10
What's Next? .....	2-11

### 3. Installing WebLogic Platform Using Console-Mode Installation

Before You Start .....	3-1
Starting Console-Mode Installation on Windows Systems .....	3-2
Starting Console-Mode Installation on UNIX Systems .....	3-4
Starting Console-Mode Installation for .bin Installation Files .....	3-4
Starting Console-Mode Installation for .jar Installation Files .....	3-5
Running Console-Mode Installation .....	3-7
What's Next? .....	3-13

### 4. Installing WebLogic Platform Using Silent-Mode Installation

What Is Silent-Mode Installation? .....	4-1
Before You Start .....	4-2
Using Silent-Mode Installation: Main Steps .....	4-2
Important Notes About Silent-Mode Installation .....	4-3
Creating a Silent-Mode Installation Template File .....	4-3
Starting the Silent-Mode Installation Process on a Windows System .....	4-9
Starting the Silent-Mode Installation Process on a UNIX System .....	4-10
Starting Silent-Mode Installation for .bin Installation Files .....	4-10
Starting Silent-Mode Installation for .jar Installation Files .....	4-11
Sample Template Files for Silent-Mode Installation .....	4-12
Comprehensive Template File Sample .....	4-12
Sample Template for Configuring a Domain with an Administration Server with Managed Servers .....	4-16
Sample Template for Configuring a Cluster of Managed Servers .....	4-18
Sample Template for Adding a Managed Server to an Existing Domain .....	4-21

What's Next? .....	4-23
--------------------	------

## 5. Installing and Updating WebLogic Platform License Files

About the WebLogic Platform License .....	5-1
Evaluation Licenses. ....	5-1
Developer and Production Licenses .....	5-2
Updating Your license.bea File .....	5-2
Enabling 128-Bit Encryption .....	5-4
Upgrading Licenses from Pre-7.0 Releases of WebLogic Platform Products. ....	5-5

## 6. Installing Service Packs and Rolling Patches

About Service Packs and Rolling Patches. ....	6-2
Important Notes About the Package Upgrade Installer .....	6-3
Important Note If You Use the Node Manager in a Clustered Environment. ....	6-3
Important Note About Updating WebLogic Server 7.0 GA (7.0.0.0) .....	6-4
Installing Service Packs and Rolling Patches Using Smart Update .....	6-4
Installing Service Packs and Rolling Patches Using a Downloadable Upgrade Installer .....	6-8
Using the Upgrade Installer in Graphical Mode. ....	6-9
Using the Upgrade Installer in Console Mode .....	6-12
Uninstalling Maintenance Upgrades Using Smart Update .....	6-16
What's Next? .....	6-17

## 7. Uninstalling WebLogic Platform

About the Uninstallation Program. ....	7-1
Uninstalling Service Packs and Rolling Patches .....	7-2
Uninstalling WebLogic Platform in Graphical Mode .....	7-2
Uninstalling WebLogic Platform in Console Mode. ....	7-4
Uninstalling WebLogic Platform in Silent Mode .....	7-6
Uninstalling a Service Pack or Rolling Patch in Graphical Mode. ....	7-7

Uninstalling a Service Pack or Rolling Patch in Console Mode . . . . .	7-8
Reinstalling WebLogic Platform . . . . .	7-8

## 8. Performing Post-Installation Tasks

Using QuickStart . . . . .	8-1
Executing the Samples . . . . .	8-2
Switching to Other Databases . . . . .	8-2
Determining the SDK Version You Are Using . . . . .	8-3
Understanding the WebLogic Platform Windows Shortcuts . . . . .	8-5
WebLogic Platform Start Menu . . . . .	8-5
Understanding the WebLogic Platform Product Directory Structure . . . . .	8-7

## A. Installing BEA EDI Connect for WebLogic Integration

Power.Server! Requirements . . . . .	A-2
Database Requirements . . . . .	A-2
Security Requirement . . . . .	A-2
System Requirements . . . . .	A-2
Installing the Power.Enterprise! Server, Power.Server! . . . . .	A-2
Installing the Power.Enterprise! Client: Power.Map! and Power.Manager! . . . . .	A-3
System Requirements . . . . .	A-3
Installation Instructions . . . . .	A-4
Installing the BEA EDI Connect for WebLogic Integration License . . . . .	A-4





# About This Document

This document explains how to install the BEA WebLogic Platform™ software on both Windows and UNIX systems.

This document is organized as follows:

- [Chapter 1, “Preparing to Install WebLogic Platform,”](#) provides the basic information you need to know before installing WebLogic Platform.
- [Chapter 2, “Installing WebLogic Platform Using Graphical-Mode Installation,”](#) describes how to install the WebLogic Platform software on Windows and UNIX systems using a Java-based graphical user interface (GUI).
- [Chapter 3, “Installing WebLogic Platform Using Console-Mode Installation,”](#) discusses how to install WebLogic Platform on Windows and UNIX systems using a text-based interface.
- [Chapter 4, “Installing WebLogic Platform Using Silent-Mode Installation,”](#) describes how to install WebLogic Platform without user intervention by using a template file during the installation process. Several sample template files are included.
- [Chapter 5, “Installing and Updating WebLogic Platform License Files,”](#) describes the license types available for WebLogic Platform, how to update your license file, and how to enable 128-bit encryption.
- [Chapter 8, “Performing Post-Installation Tasks,”](#) explains what you should do after you install the software.

- [Chapter 6, “Installing Service Packs and Rolling Patches,”](#) describes how to install maintenance upgrades using Smart Update and the downloadable upgrade installer. It also describes how to uninstall maintenance upgrades using Smart Update.
- [Chapter 7, “Uninstalling WebLogic Platform,”](#) provides procedures for uninstalling WebLogic Platform in graphical, console, and silent mode.
- [Appendix A, “Installing BEA EDI Connect for WebLogic Integration,”](#) provides database and system requirements, and installation instructions for the Power.Server!, Power.Manager! and Power.Map! software. Procedures for licensing the BEA EDI Connect for WebLogic Integration software are also included.

## Audience

This document is written for system administrators or application developers who are installing WebLogic Platform software. It is assumed that readers know Web technologies and have a general understanding of Windows and UNIX systems.

## e-docs Web Site

BEA product documentation is available on the BEA corporate Web site. From the BEA Home page, click on Product Documentation or go directly to the “e-docs” Product Documentation page at <http://e-docs.bea.com>.

## How to Print the Document

You can print a copy of this document from a Web browser, one file at a time, by using the File—>Print option on your Web browser.

A PDF version of this document is available on the WebLogic Platform documentation Home page on the e-docs Web site (and also on the documentation CD). You can open the PDF in Adobe Acrobat Reader and print the entire document (or a portion of it) in book format. To access the PDFs, open the WebLogic Platform documentation Home page, click Download Docs, and select the document you want to print.

If you do not have Adobe Acrobat Reader, you can get it for free from the Adobe Web site at <http://www.adobe.com>.

## Related Information

The BEA corporate Web site provides all documentation for WebLogic Platform. Other WebLogic Platform documents that you may find helpful when installing the WebLogic Platform software are:

- *Introducing BEA WebLogic Platform*
- *Using the Configuration Wizard*

## Contact Us!

Your feedback on BEA WebLogic Platform documentation is important to us. Send us e-mail at [docsupport@bea.com](mailto:docsupport@bea.com) if you have questions or comments. Your comments will be reviewed directly by the BEA professionals who create and update the documentation.

In your e-mail message, please indicate which release of the WebLogic Platform documentation you are using.

If you have any questions about this version of BEA WebLogic Platform, or if you have problems installing and running BEA WebLogic Platform, contact BEA Customer Support through BEA eSupport at <http://www.bea.com>. You can also contact Customer Support by using the contact information provided on the Customer Support Card, which is included in the product package.

When contacting Customer Support, be prepared to provide the following information:

- Your name, e-mail address, phone number, and fax number
- Your company name and company address
- Your machine type and authorization codes
- The name and version of the product you are using
- A description of the problem and the content of pertinent error messages

## Documentation Conventions

The following documentation conventions are used throughout this document.

Convention	Usage
<b>boldface text</b>	Indicates terms defined in the glossary.
Ctrl+Tab	Indicates that you must press two or more keys simultaneously.
<i>italics</i>	Indicates emphasis and book titles.

Convention	Usage
monospace text	<p>Indicates code samples, commands and their options, Java classes, data types, directories, and filenames and their extensions. Monospace text also indicates text that you enter from the keyboard.</p> <p><i>Examples:</i></p> <pre>import java.util.Enumeration; chmod u+w * config/examples/applications .java config.xml float</pre>
<b>monospace boldface text</b>	<p>Identifies significant words in code.</p> <p><i>Example:</i></p> <pre>void <b>commit</b> ( )</pre>
<i>monospace italic text</i>	<p>Identifies variables in code.</p> <p><i>Example:</i></p> <pre>String <i>CustomerName</i>;</pre>
UPPERCASE TEXT	<p>Indicates device names, environment variables, and logical operators.</p> <p><i>Examples:</i></p> <pre>LPT1 BEA_HOME OR</pre>
{ }	<p>Indicates a set of choices in a syntax line. The braces themselves should never be typed.</p>
[ ]	<p>Indicates optional items in a syntax line. The brackets themselves should never be typed.</p> <p><i>Example:</i></p> <pre>java utils.MulticastTest -n name -a address       [-p portnumber] [-t timeout] [-s send]</pre>

Convention	Usage
	<p>Separates mutually exclusive choices in a syntax line. The symbol itself should never be typed.</p> <p><i>Example:</i></p> <pre>java weblogic.deploy [list deploy undeploy update]     password {application} {source}</pre>
...	<p>Indicates one of the following in a command line:</p> <ul style="list-style-type: none"> <li>• That an argument can be repeated several times in the command line.</li> <li>• That the statement omits additional optional arguments</li> <li>• That you can enter additional parameters, values, or other information</li> </ul> <p>The ellipsis itself should never be typed.</p> <p><i>Example:</i></p> <pre>buildobjclient [-v] [-o name ] [-f file-list]... [-l file-list]...</pre>
. . .	<p>Indicates the omission of items from a code example or from a syntax line. The vertical ellipsis itself should never be typed.</p>

About This Document

# Preparing to Install WebLogic Platform

BEA WebLogic Platform 7.0 includes application infrastructure technology from proven BEA products that are used by thousands of customers worldwide, including BEA WebLogic Server™, BEA WebLogic Portal™, and BEA WebLogic Integration™. WebLogic Server now includes BEA WebLogic Workshop™, a new visual development environment for building enterprise-class Web services. In BEA WebLogic Platform 7.0 SP2 and higher, the BEA WebLogic JRockit™ SDK is bundled with Windows and Linux platforms. The WebLogic JRockit SDK was developed and optimized for server-side applications and supports Intel architectures. Together, these technologies offer a single, unified, easy-to-use infrastructure platform for application development, deployment, and management.

The following sections provide information that you need to know before installing the BEA WebLogic Platform software:

- [About BEA WebLogic Platform Installation](#)
- [WebLogic Platform Software Components](#)
- [WebLogic Platform Distribution Methods](#)
- [About BEA WebLogic JRockit 7.0](#)
- [Installation Prerequisites](#)
- [Choosing the Type of Installation](#)
- [Selecting Directories for the WebLogic Platform Installation](#)
- [Generating a Verbose Installation Log](#)

- [Where to Find Upgrade and Migration Information](#)
- [About Smart Update](#)

## About BEA WebLogic Platform Installation

BEA WebLogic Platform 7.0 is distributed and installed using the BEA Installation and Distribution System, which provides a complete framework for the following:

- Simplified distribution of BEA products via download from the BEA Web site using a net installer.
- Installation and uninstallation of the entire WebLogic Platform product, or individual components as desired.
- Simplified mechanism for obtaining and installing product upgrades using Smart Update.
- The ability to create WebLogic domains using a Configuration Wizard that can be invoked at the end of the installation process. Procedures for using the Configuration Wizard are provided in [Using the Configuration Wizard](#). Detailed descriptions of the domain templates provided with the WebLogic Platform installation program are provided in [Configuration Wizard Template Reference](#).

## WebLogic Express Support

You can also use the WebLogic Platform installation program to install the BEA WebLogic Express™ solution, which is the entry-level Web application server offered by BEA. For additional information about WebLogic Express, see *Introduction to BEA WebLogic Server and WebLogic Express* at the following URL:

<http://e-docs.bea.com/wls/docs70/intro/index.html>

## Installation Methods

The BEA installation program supports the following methods for installing the BEA WebLogic Platform software:

- *Graphical mode*

Graphical-mode installation is an interactive, GUI-based method for installing WebLogic Platform. It can be run on both Windows and UNIX systems. For installation procedures, see [Chapter 2, “Installing WebLogic Platform Using Graphical-Mode Installation.”](#)



**Note:** To run graphical-mode installation, the console attached to the machine on which you are installing the software must support a Java-based GUI. All consoles for Windows systems support Java-based GUIs, but not all consoles for UNIX systems do. If you attempt to start the installation program in graphical mode on a system that cannot support a graphical display, the installation program automatically starts console-mode installation.

- *Console mode*

Console-mode installation is an interactive, text-based method for installing WebLogic Platform from the command line on both UNIX and Windows systems. For installation procedures, see [Chapter 3, “Installing WebLogic Platform Using Console-Mode Installation.”](#)

- *Silent mode*

Silent-mode installation is a noninteractive method of installing WebLogic Platform that uses an XML properties file for selecting installation options. You can run silent-mode installation as part of a script or from the command line. Silent-mode installation is a way of setting installation configurations only once and then using those configurations to duplicate the installation on many machines. For installation procedures, see [Chapter 4, “Installing WebLogic Platform Using Silent-Mode Installation.”](#)

## WebLogic Platform Software Components

WebLogic Platform consists of the following software that can be installed on your system:

- [WebLogic Server and WebLogic Workshop](#)
- [WebLogic Integration](#)
- [WebLogic Portal](#)
- [WebLogic Platform Samples and Utilities](#)
- [WebLogic Integration Complementary Products](#)

For additional information about:

- The features and capabilities of the WebLogic Platform components, see *Introducing BEA WebLogic Platform* at <http://e-docs.bea.com/platform/docs70/intro/index.html>
- WebLogic Platform component licensing, see the Licensing page on the e-docs Web site at <http://e-docs.bea.com/platform/docs70/interm/license.html>
- WebLogic Platform operating system and hardware support, see *Supported Platforms* on the e-docs Web site at <http://e-docs.bea.com/platform/docs70/support/index.html>

## WebLogic Server and WebLogic Workshop

WebLogic Server is an application server that provides a solid foundation for rapidly developing, deploying, and managing e-business applications. It includes WebLogic Workshop, which provides a complete framework for easily building Web services that automatically leverage the power, reliability, and scalability of WebLogic Server. If you select the entire WebLogic Server component, the installation program installs the WebLogic Server program files, the WebLogic Workshop program files, and the server and Workshop examples.

WebLogic Server consists of the following components:

- **Server**—this component consists of the WebLogic Server program files which contain the core Java 2 Enterprise Edition (J2EE) features.
- **Workshop**—this component consists of the WebLogic Workshop program files, including visual development and run-time environments.

**Note:** The WebLogic Workshop visual development environment and associated JRE are not installed on Solaris and HP-UX systems.

- **Server Examples**—this component contains the WebLogic Server examples, Pet Store servers and sample applications, and WebLogic Workshop samples. These servers and sample applications demonstrate a variety of J2EE features using WebLogic Server. Resources are provided to help you build, configure, and run each of the sample applications. The Workshop samples demonstrate how to build enterprise-class Web services with WebLogic Workshop. You must install the server to install and use the WebLogic Server and Workshop examples.

## WebLogic Integration

WebLogic Integration offers business process management, application integration, B2B integration, data integration, and optional Electronic Data Interchange (EDI) integration functionality. If you select the entire WebLogic Integration component, the installation program installs the server program files, the client design and development tools, and the samples.

WebLogic Integration consists of the following components:

- **Integration Server**—this component consists of the program files for the WebLogic Integration server, the client design and development tools, and the BEA WebLogic Adapter for Power.Enterprise! 3.1.

**Note:** WebLogic Server is a prerequisite for installing the Integration server.

- **Integration Examples**—this component consists of the sample files for all of the WebLogic Integration functionality. These samples help you learn how WebLogic Integration works and

demonstrate implementation techniques for your own solutions. You must install the Integration server to install and use the Integration samples.

- Client only—this separately installable component consists of the WebLogic Integration Studio and Worklist clients, the data integration Format Builder, the business process management tutorial sample, and a server. You can install the client as a standalone component on a remote machine.
- WebLogic Integration Adapter and Plug-ins—the following components are installed with WebLogic Platform 7.0 SP5 and higher:
  - RDBMS adapter
  - xFile, EMail, and HTTP plug-ins

In previous 7.0*x* releases, these components were available as separate downloads. The plug-ins are pre-deployed in any WebLogic Integration domain created using the Configuration Wizard. The RDBMS adapter must be deployed manually. For more information, see the *WebLogic Integration Release Notes* at:

<http://e-docs.bea.com/wli/docs70/relnotes/index.htm>

## EDI Integration

The optional EDI integration functionality of WebLogic Integration consists of the following components:

- BEA WebLogic Adapter for Power.Enterprise!, which provides a blackbox gateway between WebLogic Integration and the BEA EDI Connect for WebLogic Integration software. This adapter is installed with the WebLogic Integration server software.
- BEA EDI Connect for WebLogic Integration, purchased separately as Power.Enterprise!, is a software suite that includes Power.Server!, and the client administration tools, Power.Map!, and Power.Manager!. These three components are used to define EDI message maps, manage trading partner relationships, and handle the run-time work of transmitting and receiving EDI messages. EDI Connect for WebLogic Integration can be purchased separately from BEA Systems. Product prerequisites, installation instructions, and licensing information are provided in [Appendix A, “Installing BEA EDI Connect for WebLogic Integration.”](#)

## WebLogic Portal

WebLogic Portal provides a framework for building portals in an enterprise that can have campaign, commerce, and personalization functionality. If you select the entire WebLogic Portal component, the

installation program installs the server program files, the E-Business Control Center, and the samples. WebLogic Portal consists of the following components:

- **Portal Server**—this component installs the program files for the portal, campaign, commerce and personalization services features.

**Note:** WebLogic Server is a prerequisite for installing the Portal server.

- **Portal Examples**—this component consists of the sample files for all of the WebLogic Portal functionality. These samples help you learn how WebLogic Portal works and demonstrate implementation techniques for your own solutions. You must install the Portal server to install and use the Portal examples.
- **EBCC**—the E-Business Control Center (EBCC) is a client tool used by all of the components of WebLogic Portal. You can install the EBCC as a standalone component on a remote machine, or on the same machine as the server software if the platform supports both. If you install the E-Business Control Center as a standalone component, it must be able to access the machine on which the server is installed.

## WebLogic Platform Samples and Utilities

Platform Samples and Utilities apply to all components of WebLogic Platform. These components require a complete installation of the WebLogic Platform components. The following samples and utilities are available:

- **QuickStart**—the QuickStart application is a guide to assist first-time users in evaluating, learning, and using WebLogic Platform.
- **Platform Tour**—the tour launches a fully integrated sample application that demonstrates key features of WebLogic Platform.

## WebLogic Integration Complementary Products

Contivo Analyst is an intuitive, graphical tool that allows business analysts to complete and customize data transformation maps as a visual documentation exercise. Once a map is completed, the Contivo Analyst software generates a file, which is subsequently used to perform a data transformation in a run-time environment. Contivo Analyst generates XSLT style sheet maps for XML-to-XML transformations within WebLogic Integration. It is provided on the WebLogic Platform product CD and is available for download from the BEA Web site.

Contivo Analyst, supported on Windows systems only, is not installed with the WebLogic Platform software. You must install it separately. Installation instructions, release notes, and user

documentation are included in the installation file and extracted during the execution of the installation program.

**Note:** The Contivo Analyst software needs to be configured to work with the WebLogic Integration repository. If you install Contivo Analyst after you install WebLogic Server 7.0 and WebLogic Integration 7.0, the Contivo installation program detects your BEA Home directory and prompts you to select the directory that contains the latest version of the BEA software. It then configures the WebLogic Integration repository accordingly.

If, however, Contivo Analyst was installed on your system before you installed WebLogic Server and WebLogic Integration, you need to integrate the Contivo Analyst software with the repository. Instructions are provided in the installation section of the *Contivo-BEA Release Notes*, which you can access from the Start menu as follows: Start→Programs→Contivo Analyst→Release Notes.

## WebLogic Platform Distribution Methods

WebLogic Platform is distributed on both the BEA Web site and CD-ROM.

### Web Distribution of WebLogic Platform

You can download the WebLogic Platform 7.0 software from the following BEA Web site:

[http://commerce.bea.com/downloads/weblogic\\_platform.jsp](http://commerce.bea.com/downloads/weblogic_platform.jsp)

Two methods are available for download:

- Net installer—this method (recommended) downloads a setup file that is approximately 20 MB.

During the installation process, the installation program prompts you to select the components that you want to install on your system. If you are using the net installer, only the components that you choose to install on your system are downloaded. Before the download begins, you are prompted to provide the following information:

- A storage directory—an archive file is downloaded to your system for each component that you choose to install. You need to specify a directory to which you want these archive files downloaded. You can choose any location on your system for these files; they do not need to be collocated with the installation setup file, or with the installed software. To conserve disk space, you can also specify that you want the downloaded files removed from your system after the installation is complete.
- HTTP Proxy—if you want to download these files using an HTTP proxy, you must specify the Host address and port numbers for the proxy server.

The net installer supports standard resume processing in the case of interrupted downloads. If the download is interrupted for any reason, either manually or by an unplanned network interruption, you can resume the download from the point at which it was interrupted. When the download is complete, the installation program performs an integrity check on the archive files that were downloaded to your system to verify that the files downloaded correctly.

- **Package installer**—this method downloads a standalone version of the installation program that contains all of the WebLogic Platform software components (approximately 295 MB).

**Note:** If you are planning to install the software using silent-mode installation, you must download the package installer. Silent-mode installation is not supported with the net installer.

## CD-ROM Distribution of WebLogic Platform

If you purchased WebLogic Platform from your local sales representative, you will find the following items in the WebLogic Platform product box:

- **Five CD-ROMS:**
  - Disk 1 contains the BEA WebLogic Platform 7.0 SP2 product software for Windows and Solaris with the Sun Java 2 SDK.
  - Disk 2 contains the BEA WebLogic Platform 7.0 SP2 product software for Windows and Red Hat Linux Advanced Server 2.1 with the WebLogic JRockit Java 2 SDK.
  - Disk 3 contains the BEA WebLogic Platform 7.0 SP2 product software for Red Hat Linux 7.2 with the Sun Java 2 SDK.
  - Disk 4 contains the BEA WebLogic Platform 7.0 SP1 product software for HP-UX and AIX.
  - Disk 5 contains the BEA WebLogic Platform Online Documentation.
- **The following printed documents:**
  - *Installing BEA WebLogic Platform* (this guide)
  - *Introducing BEA WebLogic Platform*
  - *BEA Software License and Limited Warranty* pamphlet
  - *Customer Support Quick Reference and Other Important Information* card
  - A flyer that provides URL pointers to the online Release Notes.

If you purchased the product, in most cases a license file is sent to you as an e-mail attachment. The name of the input license file can vary. The names of most license files are prefixed with the BEA sales order record (SOR). When you install the software from the CD-ROM, an evaluation license is

installed. You can update this evaluation license with the license you received via e-mail as described in [Chapter 5, “Installing and Updating WebLogic Platform License Files.”](#)

## Web Distribution of Service Packs and Rolling Patches

Service packs and rolling patches, if any, are included in the latest distribution of WebLogic Platform 7.0, which you can download as described in [“Web Distribution of WebLogic Platform” on page 1-7](#). If you do not have WebLogic Platform 7.0 installed, you should install this distribution.

If you already have WebLogic Platform 7.0 installed, with no service pack, *and* if you have a BEA eSupport account, you can upgrade your software in one of the following ways:

- Use the Smart Update feature (recommended) to retrieve and install software updates from the BEA Web site. Smart Update retrieves the updates only for components currently installed in the target BEA Home directory.

**Note:** Smart Update upgrades your Windows installation to use the Sun Java 2 SDK and your Linux installation to use the WebLogic JRockit SDK. If you want to use a different SDK, you should use a WebLogic Platform upgrade installer that is bundled with the appropriate SDK or change the SDK, as described in “Switching JVMs in WebLogic Platform” in the *WebLogic Platform Release Notes*, at the following URL:

<http://e-docs.bea.com/platform/docs70/relnotes/relnotes.html#nonbundledJVM>

- Download the Service Pack Upgrade from the BEA Customer Support Web site at <http://support.bea.com>, without downloading the entire WebLogic Platform distribution.

Details about installing WebLogic Platform service packs and rolling patches are provided in [Chapter 6, “Installing Service Packs and Rolling Patches.”](#)

If you do *not* have a BEA eSupport account go to the following URL to get one:

<http://support.bea.com>

## About BEA WebLogic JRockit 7.0

BEA WebLogic JRockit™ was developed and optimized for server-side applications and supports Intel architectures. In BEA WebLogic Platform 7.0 SP2 and higher, the WebLogic JRockit 7.0 SDK is packaged with the WebLogic Platform software.

**Note:** WebLogic JRockit 7.0 is certified with Java 2 Platform, Standard Edition (J2SE), version 1.3.1.

The WebLogic Platform/JRockit software packages are available for download at [http://commerce.bea.com/downloads/weblogic\\_platform.jsp](http://commerce.bea.com/downloads/weblogic_platform.jsp) and on CD-ROM in the BEA WebLogic Platform product box.

To install the WebLogic Platform/JRockit packages, you can use the installation procedures described in the following chapters:

- [Chapter 2, “Installing WebLogic Platform Using Graphical-Mode Installation”](#)
- [Chapter 3, “Installing WebLogic Platform Using Console-Mode Installation”](#)
- [Chapter 4, “Installing WebLogic Platform Using Silent-Mode Installation”](#)

**Note:** The net installer is not available with the WebLogic Platform packages that include the WebLogic JRockit SDK.

When you install a WebLogic Platform 7.0/JRockit package, two JVMs are installed on your system: the WebLogic JRockit JVM, optimized for server-side applications, and the Sun Hotspot Client JVM, provided for optional use by client-side applications. Some of the samples provided with WebLogic Platform heavily exercise a client-side GUI or other application for which client-oriented JVMs, such as the Sun Hotspot Client JVM, are more appropriate. In WebLogic Platform 7.0 SP2 and higher, a convenient script, `commEnv`, is installed that defines environment variables that determine whether a client or server JVM should be run. For additional information, see “Specifying JVM Options in WebLogic Platform 7.0 SP2 and Later” in the *BEA WebLogic Platform Release Notes* at <http://e-docs.bea.com/platform/docs70/relnotes/relnotes.html>.

If you install WebLogic Platform 7.0 with the Sun Java 2 SDK and you want to change your installation to use the WebLogic JRockit 7.0 SDK, see “Using WebLogic Platform with the WebLogic JRockit SDK” in the *BEA WebLogic Platform Release Notes* for instructions at:

<http://e-docs.bea.com/platform/docs70/relnotes/relnotes.html>.

For more information about WebLogic JRockit, see the JRockit documentation at

<http://e-docs.bea.com/wljrockit/docs70/index.html>.

**Note:** The installation instructions provided in *BEA WebLogic JRockit™ 7.0 SDK Installation and Migration Guide* describe how to install JRockit as a standalone SDK. These instructions do not apply to the WebLogic Platform/JRockit packages.

## Installation Prerequisites

The following sections provide installation prerequisites for a WebLogic Platform installation:

- [System Requirements](#)



- [Temporary Disk Space Requirements](#)
- [Administrator Privileges](#)
- [Licensing and Encryption](#)

## System Requirements

The system requirements for WebLogic Platform are given in the following table.

**Table 1-1 System Requirements**

Component	Requirement
Supported platform	<p>A platform configuration that is supported by BEA WebLogic Platform. See the <i>Supported Platforms</i> page at the following URL:</p> <p><a href="http://e-docs.bea.com/platform/docs70/support/index.html">http://e-docs.bea.com/platform/docs70/support/index.html</a></p> <p>This page includes the recommended Java run-time environment versions and other prerequisites or recommendations.</p>
Hard disk drive	<p>A full WebLogic Platform installation requires approximately 525 MB of disk space, including 35 MB for the SDK and 142 MB for the examples. For a list of the disk drive requirements for the individual components, see the <i>Supported Platforms</i> page at the following URL:</p> <p><a href="http://e-docs.bea.com/platform/docs70/support/index.html">http://e-docs.bea.com/platform/docs70/support/index.html</a></p>
Memory	<p>Full WebLogic Platform installation—512 MB of RAM, 1 GB recommended</p> <p>WebLogic Server—256 MB of RAM minimum, 512 MB or more recommended</p> <p>WebLogic Integration—512 MB RAM, 1 GB recommended</p> <p>WebLogic Portal—512 MB of RAM, 1 GB recommended</p>

Table 1-1 System Requirements (Continued)

Component	Requirement
Color bit depth display and size	For graphical user interface (GUI) mode installation, 8-bit color depth (256 colors). For console-mode and silent-mode installation, there is no color bit depth requirement.
Java 2 SDK	The WebLogic Platform installation program requires a Java run-time environment (JRE) to run. A Java 2 Software Development Kit (SDK), which includes a JRE, is bundled in the Windows installation program, and in some UNIX installation programs (those with filenames ending in <code>.bin</code> ). For other UNIX platforms, the WebLogic Platform installation program does not include the Java 2 SDK. Filenames for these installation programs end in <code>.jar</code> . To run the <code>.jar</code> installation programs, you must have the appropriate version of the Java 2 SDK installed on your system, and include the <code>bin</code> directory of the SDK at the front of the <code>PATH</code> variable. It is important that you use an SDK because the installation process sets the <code>JAVA_HOME</code> and related variables to point to this directory. For procedures, see one of the following: <ul style="list-style-type: none"><li>• <a href="#">“Starting Graphical-Mode Installation for .jar Installation Files” on page 2-5</a></li><li>• <a href="#">“Starting Console-Mode Installation for .jar Installation Files” on page 3-5</a></li></ul>

## Temporary Disk Space Requirements

The BEA installation program uses a temporary directory in which it extracts the files necessary to install WebLogic Platform on the target system. During the installation process, your temporary directory must contain sufficient space to accommodate the compressed Java run-time environment (JRE) bundled with the installation program and an uncompressed copy of the JRE that is expanded into the temporary directory. The extracted files are deleted from the temporary directory at the end of the installation process. As a general rule, installation programs require approximately 2.5 times the amount of temporary space the installed files require.

By default, the installation program uses the following temporary directories:

- Windows platforms—directory referenced by the `TMP` system variable
- UNIX platforms—system dependent temporary directory

**Note:** If there is not enough temporary space to run the installation program, you are prompted to specify an alternate directory or exit the installation program.

To ensure there is adequate temporary space, you may want to allocate an alternate directory for use as a temporary directory for the installation. To do so, follow the instructions provided in the following table.

On this platform . . .	Perform this step . . .
Windows	<p>Do one of the following:</p> <ul style="list-style-type: none"><li>• Set the TMP system variable to a directory of your choice.</li><li>• If starting the installation program from the command line, enter the <code>-Djava.io.tmpdir=tmpdirpath</code> option on the command line. In this option, <i>tmpdirpath</i> is the full path of the directory that you want to use to temporarily store files used by the WebLogic Platform installation program. For example: <pre>net_platformXXX_win32.exe -mode=console -Djava.io.tmpdir=d:\Temp</pre>In the filename used in this example, <i>XXX</i> is the version number of the software you are installing.</li></ul>
UNIX	<p>Enter the following option on the command line when you start the installation program:</p> <pre>-Djava.io.tmpdir=tmpdirpath</pre> <p>Here, <i>tmpdirpath</i> is the full path of the directory that you want to use to temporarily store files used by the WebLogic Platform installation program.</p>

## Administrator Privileges

If you choose to run the Configuration Wizard at the completion of a custom installation to create user domains, you are prompted (in some templates—such as the WLS Domain template) to specify if you want the server installed as a Windows service. When a server is installed as a Windows service, it starts automatically each time you boot your Windows system. You must have *Administrator* privileges to install the server as a Windows service.

For additional information, see “Setting Up a WebLogic Server as a Windows Service” in “Starting and Stopping WebLogic Servers” in the *BEA WebLogic Server Administration Guide* at the following URL:

<http://e-docs.bea.com/wls/docs70/adminguide/startstop.html#SettingUpServerAsWindowsService>

## Licensing and Encryption

The WebLogic Platform software cannot be used without a valid license. When you install WebLogic Platform, the installation program installs an evaluation license with access for up to 20 client connections. The evaluation license is a full license, enabling all of the component features of WebLogic Platform.

You can purchase licenses for the entire WebLogic Platform product, or for individual components. For information about the licenses available for WebLogic Platform, see the Licensing page on the e-docs Web site at the following URL:

<http://e-docs.bea.com/platform/docs70/interm/license.html>

Licenses for pre-7.0 versions of the WebLogic Platform components will not work with WebLogic Platform 7.0. You must upgrade this license to a 7.0 `license.bea` format. Procedures for upgrading a license file and installing permanent licenses are provided in [Chapter 5, “Installing and Updating WebLogic Platform License Files.”](#)

### About 128-Bit Encryption

Secure sockets layer (SSL) encryption software is available with two levels of encryption: 56-bit and 128-bit. Licenses for the 128-bit client version of SSL are available in the United States and Canada. With proper authorization, customers outside the United States and Canada may also acquire licenses with 128-bit encryption enabled.

A WebLogic Platform license comes with 56-bit encryption enabled by default. Enabling 128-bit encryption for SSL requires that a 128-bit encryption license be present in the `license.bea` file of the target BEA Home directory *before* you install the WebLogic Platform software.

For instructions about how to install the 128-bit encryption license, see [“Enabling 128-Bit Encryption” on page 5-4.](#)

## Choosing the Type of Installation

The WebLogic Platform installation program provides two types of installation:

- Typical Installation

In a typical installation, all the software components provided with WebLogic Platform, including sample files, are installed on your system. For a description of the software components provided with WebLogic Platform, see [“WebLogic Platform Software Components” on page 1-3.](#) Sample domains for all the components, as well as the WebLogic Platform Tour, are

preconfigured for use with the PointBase database, allowing you to execute the samples when the installation is complete.

To assist first-time users in evaluating, learning, and using WebLogic Platform, the WebLogic Platform QuickStart application is presented at the completion of a typical installation or a full, custom installation. QuickStart provides quick access to the WebLogic Platform tour and other samples, useful tools for accomplishing specific development tasks, and the online documentation.

**Note:** The QuickStart application is launched only when you have installed the software using graphical-mode installation. It is not invoked for console or silent-mode installations.

The Configuration Wizard is not invoked in a typical installation.

- Custom Installation

A custom installation allows you to choose exactly which components you want installed on your system. We recommend this option for advanced users. After the selected files are installed on your system, you are presented with the option to run the BEA WebLogic Platform Configuration Wizard. The Configuration Wizard provides the capability to configure WebLogic domains using preconfigured domain templates to facilitate domain creation for the target environment. The templates that are available for you to use with the Configuration Wizard are based on the components you install on your system. Sample domains preconfigured to use the PointBase database are created for the installed components only. The WebLogic Platform QuickStart is not available unless all components are installed.

**Note:** Use this option to install the client software (E-Business Control Center and the WebLogic Integration client) as standalone components.

## Selecting Directories for the WebLogic Platform Installation

During installation of WebLogic Platform, you need to specify locations for the following directories:

- [BEA Home Directory](#)
- [Product Installation Directory](#)
- [User Domains \(if running the Configuration Wizard\)](#)

### Choosing a BEA Home Directory

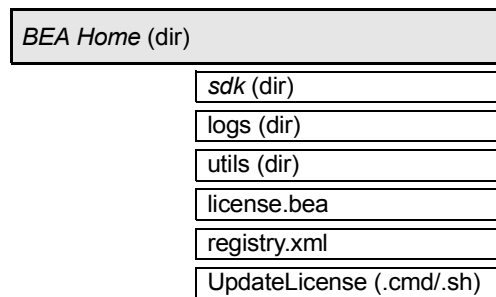
When you install WebLogic Platform, you are prompted to specify a BEA Home directory. The BEA Home directory is a repository for common files that are used by multiple BEA products installed on

the same machine. For this reason, the BEA Home directory can be considered a *central support directory* for the BEA products installed on your system.

The files in the BEA Home directory are essential to ensuring that BEA software operates correctly on your system. They perform the following types of functions:

- Ensure that licensing works correctly for the installed BEA products
- Facilitate checking of cross-product dependencies during installation
- Facilitate Service Pack installation

The structure of a sample BEA Home directory created by the WebLogic Platform installation program that includes a bundled SDK is shown in the following illustration.



This illustration depicts only the files and directories required in the BEA Home directory. If you choose the default product installation directory, you will see additional directories in the BEA Home directory, such as `weblogic700` and `user_projects`. Although the default location for the product installation directory is within the BEA Home directory, you can select a different location outside the BEA Home directory.

**Note:** For some UNIX platforms, the WebLogic Platform installation program does *not* install the SDK.

During installation of WebLogic Platform, you are prompted to choose an existing BEA Home directory or specify a path to create a new BEA Home directory. If you choose to create a new directory, the WebLogic Platform installation program automatically creates the directory for you.

**Note:** For a BEA Home directory, you are allowed to install only one instance of each version of a BEA product that uses the BEA Home directory convention. For example, you can install only one instance of WebLogic Server 7.0 in a BEA Home directory, but that BEA Home directory may also contain an instance of WebLogic Server 6.1.

## Understanding the Functions of the BEA Home Directory

The files and directories in the BEA Home directory are described in the following table.

**Table 1-2 BEA Home Directory Description**

Component	Description
<code>sdk</code> directory	<p>Contains the software for the Java 2 SDK installed with WebLogic Platform. The SDK provides the Java run-time environment (JRE) and tools for compiling and debugging Java applications. Options include:</p> <ul style="list-style-type: none"> <li>• <code>jdk131_XX</code>—the 1.3.1 version of the Sun Java 2 SDK. In this directory name, <i>XX</i> indicates the version of the Sun SDK installed on your system, for example <code>jdk131_08</code>.</li> <li>• <code>jrockitXXX</code>—The WebLogic JRockit SDK. In this directory name, <i>XXX</i> indicates the version of the JRockit SDK installed on your system, for example <code>jrockit70sp4_131_08</code>.</li> </ul> <p><b>Note:</b> SDK options vary by hardware platform. For some UNIX platforms, the WebLogic Platform installation program does <i>not</i> include an SDK.</p>
<code>logs</code> directory	Contains a history file of installation and uninstallation for the BEA Home directory.
<code>utils</code> directory	Contains utilities that are used to support the installation of all BEA WebLogic Platform products. The <code>utils.jar</code> file contains code that supports the <code>UpdateLicense</code> utility.
<code>license.bea</code> file	<p>An XML-format license file that contains the license keys for all BEA WebLogic products installed on your system.</p> <p>The format of this license has changed in WebLogic Platform 7.0. To convert a pre-7.0 <code>license.bea</code> file to a WebLogic Platform 7.0 <code>license.bea</code> file, refer to the procedures in <a href="#">“Upgrading Licenses from Pre-7.0 Releases of WebLogic Platform Products” on page 5-5</a>. To add a non-expiring (permanent) license or to update a license file for additional functionality, you must update the <code>license.bea</code> file using the <code>UpdateLicense</code> utility. For details, see <a href="#">“Updating Your license.bea File” on page 5-2</a>.</p> <p><b>Note:</b> Do not edit this file manually. Doing so may cause operating problems for the currently installed BEA products.</p>

**Table 1-2 BEA Home Directory Description (Continued)**

Component	Description
registry.xml file	<p>A registry file that contains a persistent record of all BEA products installed on the target system. This registry contains product-related information, such as version number, service pack number, and installation directory.</p> <p><b>Note:</b> Do not edit this file manually. Doing so may cause operating problems for the currently installed BEA products, or result in installation problems when installing future BEA products or maintenance upgrades.</p>
UpdateLicense (.cmd/.sh)	<p>A command file (Windows NT/2000) or a shell script (UNIX) that updates the current <code>license.bea</code> file with new license sections. The result is a merged license that contains both the existing and new license sections. For details about using the <code>UpdateLicense</code> utility, see <a href="#">“Updating Your license.bea File” on page 5-2</a>.</p>

## Creating Multiple BEA Home Directories

Although it is possible to create more than one BEA Home directory, we recommend that you avoid doing so. In almost all situations, a single BEA Home directory is sufficient. There may be circumstances, however, in which you prefer to maintain separate development and production environments, each containing a separate product stack. With two directories, you can update your development environment (in a BEA Home directory) without modifying the production environment until you are ready to do so.

## Choosing a Product Installation Directory

The product installation directory contains all the software components that you choose to install on your system, including program files and examples. You are prompted, during the initial installation of WebLogic Platform, to choose a product installation directory. If you accept the default, the WebLogic Platform software is installed in the following directory:

```
BEA_HOME\weblogic700
```

where `BEA_HOME` is the BEA Home directory containing the support information for this installation and `weblogic700` is the product installation directory. However, you can specify any name and location on your system for your product installation directory; there is no requirement that you name the directory `weblogic700`, or create it under the BEA Home directory.



The installation program uses the product installation directory as the `WL_HOME` directory and installs the software components under this directory. If, on your initial installation, you choose to install individual components of WebLogic Platform and not the full complement of products, and later decide to install additional components (using the same BEA Home directory), you are not prompted on the subsequent installations to provide a product installation directory. The installation program detects the `WL_HOME` directory and installs the additional components under that same directory.

A description of the WebLogic Platform directory structure is provided in [“Understanding the WebLogic Platform Product Directory Structure” on page 8-7](#).

## Choosing a User Domain Directory

In previous releases of the WebLogic Platform component products, domains were created within the directory structure of the product installation, including application code for each domain. With the Configuration Wizard provided in WebLogic Platform 7.0, you can, and are encouraged to create domains in their own directory structure within the domain container folder (`user_projects`, by default). You can create a domain container to store all of your user domain directories, or create each domain in its own domain container. A domain container can be located anywhere you choose.

This new directory structure provides for greater flexibility when storing application code and configuring server systems. It also promotes best practices for application development. *That is*, application code should not be stored with the product software.

**Note:** Directories created using the Configuration Wizard are not removed when you uninstall the software, or overwritten during subsequent installations. If you want to remove these directories, you must delete them manually.

Complete details on creating domains are described in [Using the Configuration Wizard](#).

## Generating a Verbose Installation Log

If you launch the installation from the command line or from a script, you can specify the `-log` option to generate a verbose installation log. The installation log stores messages about events that occur during the installation process, including informational, warning, error, and fatal messages. This type of file can be especially useful for silent installations.

**Note:** You may see some warning messages in the installation log. However, unless a fatal error occurs, the installation program completes the installation successfully. The installation user interface indicates the success or failure of each installation attempt, and the installation log file includes an entry indicating that the installation was successful.

## Syntax

To create a verbose log file during installation, include the `-log=full_path_to_log_file` option in the command line. For example:

```
platformXXX_win32.exe -log=C:\logs\platform_install.log (Windows)
```

```
platformXXX_solaris.bin -log=/home/logs/platform_install.log (UNIX)
```

In these filenames, `xxx` represents the version number of the software you are installing.

The path must specify a file. You cannot create a folder simply by including a name for it in a pathname; your path should specify only existing folders. If your path includes a nonexistent folder when you execute the command, the installation program does not create the log file.

## Where to Find Upgrade and Migration Information

Information about upgrading your WebLogic Platform installation with the latest service pack is provided in [Chapter 6, “Installing Service Packs and Rolling Patches.”](#)

Upgrade and migration information for WebLogic Platform components is available at the following URL:

<http://e-docs.bea.com/platform/docs70/interm/migrate.html>

## About Smart Update

WebLogic Platform 7.0 includes the Smart Update feature which provides the capability to quickly and easily upgrade your software with service packs, rolling patches, and subsequent releases of the software.

**Note:** Smart Update upgrades your Windows installation to use the Sun Java 2 SDK and your Linux installation to use the WebLogic JRockit SDK. If you want to use a different SDK, you should use a WebLogic Platform upgrade installer that is bundled with the appropriate SDK or change the SDK, as described in “Switching JVMs in WebLogic Platform” in the *WebLogic Platform Release Notes*, at the following URL:

<http://e-docs.bea.com/platform/docs70/relnotes/relnotes.html#nonbundledJVM>

When you start Smart Update, either from the Windows start menu or from the command line, it checks the version numbers of the products installed (associated with the current BEA Home directory), and then connects to the BEA Web site to check for available updates. For details about using Smart Update, see [Chapter 6, “Installing Service Packs and Rolling Patches.”](#)

You can also use Smart Update to revert your system installation to an earlier version of the release. For additional information, see [“Uninstalling Maintenance Upgrades Using Smart Update” on page 6-16](#).

## Preparing to Install WebLogic Platform

# Installing WebLogic Platform Using Graphical-Mode Installation

The following sections describe how to install WebLogic Platform using the graphical user interface (graphical) mode installation on both Windows and UNIX systems:

- [Before You Start](#)
- [Starting the Installation Program in Graphical Mode on Windows Platforms](#)
- [Starting the Installation Program in Graphical Mode on UNIX Platforms](#)
- [Running the Installation Program](#)
- [Using the Configuration Wizard](#)
- [What's Next?](#)

## Before You Start

Before you start the WebLogic Platform installation, please review the following information:

- Ensure you are installing the product on a supported platform. A complete list of supported platforms can be found at the following URL:  
<http://e-docs.bea.com/platform/docs70/support/index.html>
- You should read [Chapter 1, “Preparing to Install WebLogic Platform,”](#) specifically, the following sections:
  - [“Installation Prerequisites”](#) on page 1-10
  - [“Choosing the Type of Installation”](#) on page 1-14
  - [“Selecting Directories for the WebLogic Platform Installation”](#) on page 1-15

- You cannot reinstall WebLogic Platform components on top of a previously installed version of the same component. You can, however, add components to an existing installation. For example, you can install WebLogic Server during one installation, and WebLogic Integration or WebLogic Portal during separate installations. However, to reinstall the same version of one of the product components, you must first uninstall the component, as described in [Chapter 7, “Uninstalling WebLogic Platform,”](#) or install in another location.

If you are adding components to an existing installation of WebLogic Platform, you should shut down any running servers before starting the installation.

- All WebLogic Platform components installed in a BEA product directory (for example, `/bea/weblogic700`) must be at the same version level. If you attempt to install additional components at a higher version than those that are already installed in that directory, the installation program prompts you to upgrade your existing components before you can proceed with the installation. For example, if you installed WebLogic Server and WebLogic Integration 7.0 Service Pack 1, and later attempt to install WebLogic Portal 7.0 Service Pack 2, you are required to upgrade the other components to Service Pack 2 before you can install WebLogic Portal. For details on upgrading your installation, see [Chapter 6, “Installing Service Packs and Rolling Patches.”](#)

## Starting the Installation Program in Graphical Mode on Windows Platforms

To start the installation in graphical mode on a Windows system:

1. Log in to the Windows system.
2. If you are installing WebLogic Platform from CD-ROM, go to step 3. If you are installing from a Web download, complete the following procedure:
  - a. Download the software as described in [“Web Distribution of WebLogic Platform”](#) on page 1-7.
  - b. Go to the directory where you downloaded the installation program and double-click the installation file:

`net_platformXXX_win32.exe` (net installer file with Sun Java 2 SDK)

`platformXXX_win32.exe` (package installer with Sun Java 2 SDK)

`platformXXX_jrockit_win32.exe` (package installer with WebLogic JRockit Java 2 SDK)

In these filenames, `xxx` is the version number of the software you are installing.

The installation program begins to install WebLogic Platform.

- c. Proceed to [“Running the Installation Program”](#) on page 2-6.

3. If installing WebLogic Platform from the CD-ROM:
  - a. Insert the WebLogic Platform CD-ROM into the CD-ROM drive.
  - b. If the installation program does not start automatically, open the Windows Explorer and double-click the CD-ROM icon.
  - c. Navigate to the folder for the Windows installation and double-click the installation file for your platform:

`platformXXX_win32.exe` (package installer with Sun Java 2 SDK)

`platformXXX_jrockit_win32.exe` (package installer with WebLogic JRockit Java 2 SDK)

In these filenames, `xxx` is the version number of the software you are installing.

The installation program begins to install WebLogic Platform.

4. Proceed to [“Running the Installation Program” on page 2-6](#).

## Starting the Installation Program in Graphical Mode on UNIX Platforms

The WebLogic Platform installation program requires a Java run-time environment (JRE) to run. A Java 2 Software Development Kit (SDK), which includes a JRE, is bundled in the Windows installation program, and in some UNIX installation programs (those with filenames ending in `.bin`). For other UNIX platforms, the WebLogic Platform installation program does not include the Java 2 SDK. Filenames for these installation programs end in `.jar`. To run the `.jar` installation programs, you must have the appropriate version of the Java 2 SDK installed on your system, and include the `bin` directory of the SDK at the front of the `PATH` variable. It is important that you use an SDK because the installation process sets the `JAVA_HOME` and related variables to point to this directory.

**Note:** To run graphical-mode installation, your console must support a Java-based GUI. If the installation program determines that your system cannot support a Java-based GUI, it automatically starts running in console-mode. For details, see [Chapter 3, “Installing WebLogic Platform Using Console-Mode Installation.”](#)

## Starting Graphical-Mode Installation for .bin Installation Files

If you have an installation program for UNIX platforms with a filename that ends in `.bin`, follow these steps to start the installation in graphical mode:

1. Log in to the target UNIX system.
2. Open a command-line shell.
3. If you are installing WebLogic Platform from CD-ROM, go to step 4. If you are installing from a Web download, complete the following procedure:

- a. Download the software as described in [“Web Distribution of WebLogic Platform” on page 1-7](#).
- b. Go to the directory in which you downloaded the installation program and invoke the installation procedure by entering the following commands:

```
chmod a+x filename.bin
./filename.bin
```

Here, *filename.bin* is the name of the WebLogic Platform installation program specific to your platform.

**Note:** Filenames for the net installer are preceded by `net_`, for example, `net_platformXXX_solaris.bin`, where *XXX* is the version number of the software you are installing.

The installation program begins to install WebLogic Platform.

- c. Proceed to [“Running the Installation Program” on page 2-6](#).
4. If you are installing WebLogic Platform from the CD-ROM:
    - a. Insert the WebLogic Platform CD-ROM into the CD-ROM drive.
    - b. Go to the CD-ROM directory and navigate to the folder for the installation program for your platform.
    - c. Invoke the installation procedure by entering the following command:

```
./filename.bin
```

Here, *filename.bin* is the name of the WebLogic Platform installation program specific to your platform, for example `platformXXX_solaris.bin`, where *XXX* is the version number of the software you are installing.

5. Proceed to [“Running the Installation Program” on page 2-6](#).



## Starting Graphical-Mode Installation for .jar Installation Files

If you have an installation program for UNIX platforms with a filename that ends in `.jar`, follow these steps to start the installation in graphical mode:

1. Log in to the target UNIX system.
2. Open a command-line shell.
3. Include the `bin` directory of the appropriate SDK at the beginning of the `PATH` variable on the target system. For example:
 

```
PATH=JAVA_HOME/bin:$PATH
export PATH
```

 where `JAVA_HOME` is the full path to the SDK directory.
4. Do one of the following:
  - Download the software as described in [“Web Distribution of WebLogic Platform” on page 1-7](#).
  - If you are installing from CD-ROM, insert the WebLogic Platform CD-ROM into the CD-ROM drive and go to the CD-ROM directory.
5. Go to the directory that contains the installation file and invoke the installation procedure as described in the following table.

**Note:** On the CD-ROM, the installation file is located in the `weblogic_platformXXX` directory, where `XXX` is the version number of the software you are installing.

If you are . . .	Enter the following command . . .
Installing on a UNIX platform other than AIX	<code>java -jar filename.jar</code>
Installing on an AIX platform	<code>java -classpath filename.jar com.bea.installer.BEAInstallController</code>

In both cases, `filename.jar` is the name of the WebLogic Platform installation file, for example `pj_platformXXX_generic.jar`. Filenames for the net installer are preceded by `net_`, for example, `net_pj_platformXXX_generic.jar`. In these filenames, `XXX` is the version number of the software you are installing.

**Note:** Platform support sometimes varies by service pack release. To ensure you are installing the product on a supported platform, see the *Supported Platforms* page at the following URL:

<http://e-docs.bea.com/platform/docs70/support/index.html>

6. Proceed to “[Running the Installation Program](#)” on page 2-6.

# Running the Installation Program

The installation program prompts you to enter specific information about your system and configuration. For instructions on responding to the prompts during installation, see the following table.

In this window . . .	Perform the following action . . .
Welcome	Click Next to proceed with the installation. You may cancel the installation at any time by clicking Exit.
BEA License Agreement	Read the BEA Software License Agreement and indicate your acceptance of the terms of the agreement by selecting Yes. To continue with the installation, you must accept the terms of the license agreement and then click Next.
Choose BEA Home Directory	Specify the BEA Home directory that will serve as the central support directory for all BEA products installed on the target system. If you already have a BEA Home directory on your system, you can select that directory (recommended) or create a new BEA Home directory. If you choose to create a new directory, the WebLogic Platform installation program automatically creates the directory for you. For details about the BEA Home directory, see “ <a href="#">Choosing a BEA Home Directory</a> ” on page 1-15.
Choose Install Type	<p>Select the option button for the type of installation you want to perform:</p> <ul style="list-style-type: none"><li>• Typical—in a typical installation, all the software components provided with WebLogic Platform, including sample files are installed on your system. Sample domains are preconfigured for use with the PointBase database during installation allowing you to execute the samples when the installation is complete.</li><li>• Custom—in a custom installation, you can select the software components you want to install and optionally create customer application domains. Use this option to install the Integration Client or the E-Business Control Center on a standalone machine.</li></ul> <p>For additional information on the installation types, see “<a href="#">Choosing the Type of Installation</a>” on page 1-14.</p>

In this window . . .	Perform the following action . . .
<p>Choose Components</p> <p><b>Note:</b> This window is displayed only if you selected Custom installation on the Choose Install Type window.</p>	<p>Select the components to be installed by selecting or clearing the appropriate check boxes.</p> <p>This window displays a tree-view of all the components available for installation. In an initial installation, all components are checked with the exception of the WebLogic Integration Client subcomponent.</p> <p>When you select or clear a component at the folder level, all subcomponents are selected or cleared accordingly.</p> <p>The check boxes for any components already installed on your system appear as a grey check box.</p> <p><b>Note:</b> When you select or deselect components to install, the installation program checks for dependencies between components and automatically modifies the list of selected components. For example, if you clear the WebLogic Server component check box, the WebLogic Integration and WebLogic Portal servers and samples, and the WebLogic Integration client check boxes are also cleared, since they require the WebLogic Server to run. You can, however, install the EBCC subcomponent since this is a client component that does not require that the server be installed on the same machine.</p> <p>For details about the components available for installation on your system, see <a href="#">“WebLogic Platform Software Components” on page 1-3</a>.</p>
<p>Specify Download Options</p> <p><b>Note:</b> This window is displayed only if you are using the net installer.</p>	<p>Indicate your preferences for downloading the software as follows:</p> <ul style="list-style-type: none"> <li>Storage Directory—Specify a storage directory to which you want to download the software components. The installation program downloads an archive file to your system for each component that you choose to install. You can choose any location on your system for these files. It does not need to be collocated with the installation setup file, or with the installed software.</li> <li>Remove downloaded files after installation—Select this check box if you want the installation program to delete the downloaded files after the installation is complete. If you do not select this check box, the downloaded files are saved to the storage directory you specified.</li> <li>Use HTTP Proxy—Select this check box if you want to use an HTTP Proxy server for the download. To use an HTTP Proxy server, you must provide the following information: <ul style="list-style-type: none"> <li>Host—enter the name or IP address of the proxy server</li> <li>Port—enter the port number of the proxy server</li> </ul> </li> </ul>

In this window . . .	Perform the following action . . .
<p>Download Status</p> <p><b>Note:</b> This window is displayed only if you are using the net installer.</p>	<ul style="list-style-type: none"> <li>Indicate whether you want to proceed with the installation automatically after the download is complete by selecting or clearing the appropriate check box. This check box is selected by default. If you clear it, you need to click Next when the download is complete to proceed with the installation.</li> <li>Click Pause if you need to interrupt the download for any reason. If you do so, the download is discontinued and the Pause button is replaced by a Resume button. Click Resume when you want to proceed with the download.</li> </ul>
<p>Archive Integrity Check</p> <p><b>Note:</b> This window is displayed only if you are using the net installer.</p>	<p>Click Next when the download verification is complete.</p> <p>This window is displayed while the installation program verifies that the component archive files downloaded successfully.</p>
<p>Choose Product Directory</p> <p><b>Note:</b> This window is not displayed if you are performing a Custom installation and you have selected the same <i>BEA_HOME</i> directory that contains previously installed WebLogic Platform components. In that case, the selected components are installed in the Product Directory you specified during the initial installation.</p>	<p>Specify the directory in which you want to install the WebLogic Platform software and click Next. You can accept the default product directory (<code>weblogic700</code>) or create a new product directory.</p> <p>For additional information and a description of the resulting directory structure, see <a href="#">“Choosing a Product Installation Directory” on page 1-18</a>.</p> <p>If you choose to create a new directory, the installation program automatically creates the directory for you.</p> <p>When you click Next, the installation program begins copying the components you specified to your system.</p>
<p>Status</p>	<p>Read the information displayed about BEA products and services and click Next when the installation program has finished copying the specified files to your system. If you are performing a Typical installation, the install is complete.</p>

In this window . . .	Perform the following action . . .
Run Configuration Wizard  <b>Note:</b> This window is displayed only if you selected Custom installation on the Choose Install Type window.	Indicate if you want to run the Configuration Wizard to create an application domain by selecting the appropriate option.  If you choose Yes, proceed to “ <a href="http://e-docs.bea.com/platform/docs70/configwiz/index.html">Using the Configuration Wizard</a> ” on page 2-9 for a summary description of the Configuration Wizard. For complete details, refer to the document <i>Using the Configuration Wizard</i> at the following URL: <a href="http://e-docs.bea.com/platform/docs70/configwiz/index.html">http://e-docs.bea.com/platform/docs70/configwiz/index.html</a>  If you choose No, you can run the Configuration Wizard at a later time from the Start menu (Windows systems only), or the command line (UNIX and Windows system).
Install Complete	Click Done to exit the installation program.  If you performed a typical installation, or a full custom installation (that is, you installed all of the components using the Custom installation option), the WebLogic Platform QuickStart application is displayed by default. QuickStart, designed to assist first-time users in evaluating, learning, and using WebLogic Platform, provides quick access to the WebLogic Platform tour and other samples, useful tools for accomplishing specific development tasks, and the online documentation.  <b>Note:</b> If you do not want to launch QuickStart automatically, clear the Run QuickStart check box.

## Using the Configuration Wizard

If you are performing a custom installation, at the end of the installation process you can run the Configuration Wizard to create and configure WebLogic domains. Or, in both custom and typical installations, you can start the Configuration Wizard from the Start menu or the command line. For complete details, see *Using the Configuration Wizard* at the following URL:

<http://e-docs.bea.com/platform/docs70/configwiz/index.html>

You use the Configuration Wizard to create and configure custom WebLogic domains. A WebLogic domain is an interrelated set of WebLogic Server resources that are managed as a unit. A domain includes one or more WebLogic Servers, and may also include WebLogic Server clusters.

The Configuration Wizard uses preconfigured domain templates to facilitate domain creation for the target environment. The templates that are available for you to use with the Configuration Wizard are based on the components that you selected to install. For example, if you installed WebLogic Server

and WebLogic Integration, the preconfigured templates for both components are available, however the templates for WebLogic Portal are not.

## Configuration Options

Based on the preconfigured domain template that you choose, you are prompted to supply certain types of information for each domain. The following list offers a sampling of the type of information you need to provide.

**Note:** Detailed descriptions of the templates provided with the WebLogic Platform installation program are provided in *Configuration Wizard Template Reference* at the following URL:

<http://e-docs.bea.com/platform/docs70/template/index.html>

- Server Type, such as a Single standalone server, or an Administrative server with managed servers or clustered managed servers.
- A domain directory in which to create the domain. By default, this directory is created in `BEA_HOME/user_projects`, where `BEA_HOME` is the BEA Home directory containing the support information for this installation. If the directory does not exist, the Configuration Wizard creates the directory for you.
- Configuration information for the server, such as Server Name, Listen Address, Listen Port, and SSL Listen Port. Default values are provided for most values.
- A system user name and password. WebLogic Server user names and passwords can contain any character from the JDK supported character sets, including international characters.
- If you want the server configured as a Windows service. If you choose to do so, the server starts automatically each time you boot your Windows system. You must have *Administrator* privileges to install the server as a Windows service. For additional information, see “Setting Up a WebLogic Server as a Windows Service” in “Starting and Stopping WebLogic Servers” in the *BEA WebLogic Server Administration Guide* at the following URL:

<http://e-docs.bea.com/wls/docs70/adminguide/startstop.html#SettingUpServerAsWindowsService>

**Note:** You are only prompted to configure the server as a Windows service when configuring WebLogic Server domains. You are not prompted when configuring WebLogic Integration and WebLogic Portal domains.

- E-mail address and e-mail host name to enable WebLogic Integration to send e-mail from workflow instances. (This prompt is presented only when configuring domains containing business process management functionality.)

## What's Next?

When you install WebLogic Platform, the installation program installs an evaluation license file in the BEA Home directory so that you can start using the product immediately. We recommend that you use the QuickStart application to familiarize yourself with the software, take the WebLogic Platform Tour, and execute the samples provided. For additional information, see [Chapter 8, “Performing Post-Installation Tasks.”](#)

## Installing WebLogic Platform Using Graphical-Mode Installation



# Installing WebLogic Platform Using Console-Mode Installation

The following sections describe how to install WebLogic Platform using console-mode installation:

- [Before You Start](#)
- [Starting Console-Mode Installation on Windows Systems](#)
- [Starting Console-Mode Installation on UNIX Systems](#)
- [Running Console-Mode Installation](#)
- [What's Next?](#)

## Before You Start

Before you start the WebLogic Platform installation, please review the following information:

- Ensure you are installing the product on a supported platform. A complete list of supported platforms can be found at the following URL:  
<http://e-docs.bea.com/platform/docs70/support/index.html>
- You should read [Chapter 1, “Preparing to Install WebLogic Platform,”](#) specifically, the following sections:
  - [“Installation Prerequisites”](#) on page 1-10
  - [“Choosing the Type of Installation”](#) on page 1-14
  - [“Selecting Directories for the WebLogic Platform Installation”](#) on page 1-15

- You cannot reinstall WebLogic Platform components on top of a previously installed version of the same component. You can, however, add components to an existing installation. For example, you can install WebLogic Server during one installation, and WebLogic Integration or WebLogic Portal during separate installations. However, to reinstall the same version of one of the product components, you must first uninstall the component, as described in [Chapter 7, “Uninstalling WebLogic Platform,”](#) or install in another location.

If you are adding components to an existing installation of WebLogic Platform, you should shut down any running servers before starting the installation.

- All WebLogic Platform components installed in a BEA product directory (for example, `/bea/weblogic700`) must be at the same version level. If you attempt to install additional components at a higher version than those that are already installed in that directory, the installation program prompts you to upgrade your existing components before you can proceed with the installation. For example, if you installed WebLogic Server and WebLogic Integration 7.0 Service Pack 1, and later attempt to install WebLogic Portal 7.0 Service Pack 2, you are required to upgrade the other components to Service Pack 2 before you can install WebLogic Portal. For details on upgrading your installation, see [Chapter 6, “Installing Service Packs and Rolling Patches.”](#)

## Starting Console-Mode Installation on Windows Systems

To start the installation in console mode on a Windows system:

1. Log in to the target Windows system.
2. Open an MS-DOS command prompt window.
3. If you are installing WebLogic Platform from CD-ROM, go to step 4. If installing WebLogic Platform from a Web download, complete the following procedure:
  - a. Download the software as described in [“Web Distribution of WebLogic Platform”](#) on page 1-7.
  - b. Go to the directory where you downloaded the installation program and invoke the installation procedure by entering one of the following commands:

```
net_platformXXX_win32.exe -mode=console (net installer file with Sun Java 2 SDK)
```

```
platformXXX_win32.exe -mode=console (package installer with Sun Java 2 SDK)
```

```
platformXXX_jrockit_win32.exe -mode=console (package installer with WebLogic JRockit Java 2 SDK)
```

In these filenames, `xxx` is the version number of the software you are installing.

**Note:** To create a verbose log file during installation, include the `-log=full_path_to_log_file` option in the command line. For example:

```
platformXXX_win32 -mode=console -log=D:\logs\platform_install.log
```

The path must specify a file. You cannot create a folder simply by including a name for it in a pathname; your path should specify only existing folders. If your path includes a nonexistent folder when you execute the command, the installation program does not create the log file. In the filename used in this example, `xxx` is the version number of the software you are installing.

The installation program begins to install WebLogic Platform.

- c. Proceed to [“Running Console-Mode Installation” on page 3-7](#).
4. If installing WebLogic Platform from CD-ROM:
  - a. Insert the WebLogic Platform CD-ROM into the CD-ROM drive.
  - b. Open an MS-DOS command prompt window.
  - c. Go to the CD-ROM directory and navigate to the folder for the installation program for your platform.
  - d. Invoke the installation procedure by entering one of the following commands:

```
platformXXX_win32.exe -mode=console (package installer with Sun Java 2 SDK)
```

```
platformXXX_jrockit_win32.exe -mode=console (package installer with WebLogic  
JRockit Java 2 SDK)
```

In these filenames, `xxx` is the version number of the software you are installing.

**Note:** To create a verbose log file during installation, include the `-log=full_path_to_log_file` option in the command line. For example:

```
platformXXX_win32.exe -mode=console  
-log=D:\logs\platform_install.log
```

The path must specify a file. You cannot create a folder simply by including a name for it in a pathname; your path should specify only existing folders. If your path includes a nonexistent folder when you execute the command, the installation program does not create the log file. In the filename used in this example, `xxx` is the version number of the software you are installing.

- e. Proceed to [“Running Console-Mode Installation” on page 3-7](#).

## Starting Console-Mode Installation on UNIX Systems

The WebLogic Platform installation program requires a Java run-time environment (JRE) to run. A Java 2 Software Development Kit (SDK), which includes a JRE, is bundled in the Windows installation program, and in some UNIX installation programs (those with filenames ending in `.bin`). For other UNIX platforms, the WebLogic Platform installation program does not include the Java 2 SDK.

Filenames for these installation programs end in `.jar`. To run the `.jar` installation programs, you must have the appropriate version of the Java 2 SDK installed on your system, and include the `bin` directory of the SDK at the front of the `PATH` variable. It is important that you use an SDK because the installation process sets the `JAVA_HOME` and related variables to point to this directory.

## Starting Console-Mode Installation for `.bin` Installation Files

If you have an installation program for UNIX platforms with a filename that ends in `.bin`, follow these steps to start the installation in console mode:

1. Log in to the target UNIX system.
2. Open a command-line shell.
3. If you are installing WebLogic Platform from CD-ROM, go to step 4. If installing WebLogic Platform from a Web download, complete the following procedure:
  - a. Download the software as described in [“Web Distribution of WebLogic Platform” on page 1-7](#).
  - b. Go to the directory where you downloaded the installation program and invoke the installation procedure by entering the following commands:

```
chmod a+x filename.bin
./filename.bin -mode=console
```

where `filename.bin` is the name of the WebLogic Platform installation program specific to your platform.

Filenames for the net installer are preceded by `net_`, for example, `net_platformXXX_solaris.bin`, where `XXX` is the version number of the software you are installing.

**Note:** To create a verbose log file during installation, include the `-log=full_path_to_log_file` option in the command line. For example:

```
platformXXX_solaris.bin -mode=console
-log=/home/logs/platform_install.log
```

The path must specify a file. You cannot create a folder simply by including a name for it in a pathname; your path should specify only existing folders. If your path includes a nonexistent folder when you execute the command, the installation program does not create the log file. In the filename used in this example, *xxx* is the version number of the software you are installing.

4. If installing WebLogic Platform from the CD-ROM:

- a. Insert the WebLogic Platform CD-ROM into the CD-ROM drive.
- b. Go to the CD-ROM directory and navigate to the folder for the installation program for your platform.
- c. Invoke the installation procedure by entering the following commands:

```
chmod a+x filename.bin
./filename.bin -mode=console
```

Here, *filename.bin* is the name of the WebLogic Platform installation program specific to your platform, for example `platformXXX_solaris.bin`, where *xxx* is the version number of the software you are installing.

**Note:** To create a verbose log file during installation, include the `-log=full_path_to_log_file` option in the command line. For example:

```
./platformXXX_solaris.bin -mode=console
-log=/home/logs/platform_install.log
```

The path must specify a file. You cannot create a folder simply by including a name for it in a pathname; your path should specify only existing folders. If your path includes a nonexistent folder when you execute the command, the installation program does not create the log file. In the filename used in this example, *xxx* is the version number of the software you are installing.

## Starting Console-Mode Installation for .jar Installation Files

If you have an installation program for UNIX platforms with a filename that ends in `.jar`, follow these steps to start the installation in console mode:

1. Log in to the target UNIX system.
2. Open a command-line shell.
3. Include the `bin` directory of the appropriate SDK at the beginning of the `PATH` variable on the target system. For example:

```
PATH=JAVA_HOME/bin:$PATH
export PATH
```

where *JAVA\_HOME* is the full path to the SDK directory.

4. Do one of the following:
  - Download the software as described in “Web Distribution of WebLogic Platform” on page 1-7.
  - If you are installing from CD-ROM, insert the WebLogic Platform CD-ROM into the CD-ROM drive and go to the CD-ROM directory.
5. Go to the directory that contains the installation file and invoke the installation procedure as described in the following table.

If you are . . .	Enter the following command . . .
Installing on a UNIX platform other than AIX	<code>java -jar filename.jar -mode=console</code>
Installing on an AIX platform	<code>java -classpath filename.jar com.bea.installer.BEAInstallController -mode=console</code>

In both cases, *filename.jar* is the name of the WebLogic Platform installation file, for example `pj_platformXXX_generic.jar`. Filenames for the net installer are preceded by `net_`, for example, `net_pj_platformXXX_generic.jar`. In these filenames, *xxx* is the version number of the software you are installing.

Platform support sometimes varies by service pack release. To ensure you are installing the product on a supported platform, see the *Supported Platforms* page at the following URL:

<http://e-docs.bea.com/platform/docs70/support/index.html>

**Note:** To create a verbose log file during installation, include the `-log=full_path_to_log_file` option in the command line. For example:

```
java -jar pj_platformXXX_generic.jar -mode=console
-log=/home/logs/platform_install.log
```

The path must specify a file. You cannot create a folder simply by including a name for it in a pathname; your path should specify only existing folders. If your path includes a nonexistent folder when you execute the command, the installation program does not create the log file. In the filename used in this example, *xxx* is the version number of the software you are installing.

6. Proceed to “Running Console-Mode Installation” on page 3-7.

## Running Console-Mode Installation

To complete the console-mode installation process, respond to the prompts in each section by entering the number associated with your choice or by pressing Enter to accept the default. To exit the installation process, enter `exit` in response to any prompt. To review or change your selection, enter `previous` at the prompt.

**Note:** The sample console text and directory pathnames in this section use UNIX conventions (forward slashes) in pathnames, for example, `/home1/bea/weblogic700`. When entering pathnames on a Windows system, use the Windows convention (backslashes) for pathnames, for example `C:\bea\weblogic700`.

The following procedure steps you through the installation program. Use this procedure after you have started the installation program in console mode as described in the previous sections.

1. At the Welcome prompt, type `next` or press Enter to continue with the installation process.

The License Agreement prompt is displayed.

2. Read the BEA Software License Agreement and indicate your acceptance or rejection of the terms of the agreement by typing `yes` or `no`, respectively, at the prompt. To review the entire agreement, press Enter or type `more` several times. If you type `no`, the installation process terminates. To proceed with the installation, type `yes` to indicate your agreement with the terms of the license.

The Choose BEA Home directory prompt is displayed.

3. Specify the BEA Home directory that will serve as the central support directory for all BEA products installed on the target system. For details about the BEA Home directory, see [“Choosing a BEA Home Directory” on page 1-15](#).

The installation program displays the following prompt:

```
Choose BEA Home Directory:
```

- ```

1 - Create a new BEA Home
2 - Use an existing BEA Home [/home/bea]
```

```
Enter index number to select OR [Exit] [Previous] [Next] >
```

Do one of the following:

- To use an existing BEA Home directory, type `2` or `next`, or press Enter. If you have more than one BEA Home directory on your system, an additional prompt will display the directories. Type the number associated with the desired BEA Home directory.

- To create a new BEA Home directory, type 1, then at the prompt, enter the *full path* to the BEA Home directory, for example `/home/beahome2`. If you specify a directory that does not exist, the installation program creates it for you.

Whether you accept the existing BEA Home directory or choose to create a new BEA Home directory, you are prompted to confirm your selection, as shown in the following sample:

Choose BEA Home Directory:

```
->1| Yes, Use this BEA home directory [/home/bea]
    2| No, return to BEA home directory selection
```

Enter index number to select OR [Exit] [Previous] [Next]>

On the command line, type 1 or press Enter to accept your selection. Otherwise, type 2 to return to the Choose BEA Home Directory panel where you can modify your entry.

After you have selected your BEA Home directory and confirmed your selection, the Choose Install Type prompt is displayed.

4. Specify the type of installation you want to perform by entering the number associated with the install type, as shown in the following text:

Choose Install Type:

```
->1| Typical Installation (Install all software
    components, including program files and examples.)

    2| Custom Installation (Choose software components to
    install and optionally create custom application domains.
    Recommended for advanced users.)
```

=> Enter index number to select OR [Exit] [Previous] [Next]>

Do one of the following:

- Type 1 or press Enter to choose a Typical installation.  
If you are using the net installer (filename preceded by `net_`), the Specify Download Options prompt is displayed. Go to step 6.  
If you are installing from CD-ROM or using the package installer, the Choose Product Directory prompt is displayed. Go to step 7.
- Type 2 to choose a Custom installation. The Choose Components prompt is displayed.

For more information about typical and custom installations, see [“Choosing the Type of Installation” on page 1-14](#).



5. Select the components you want to install. The available components are displayed as follows:

Choose Components:

```
Release 7.0.X.0
|-----WebLogic Server  [0] x
|       |-----Server   [0.0] x
|       |-----Workshop [0.1] x
|       |-----Server Examples  [0.2] x
|-----WebLogic Integration  [1] x
|       |-----Integration Server  [1.0] x
|       |-----Integration Examples  [1.1] x
|       |-----Client only  [1.2]
|-----WebLogic Portal  [2] x
|       |-----Portal Server  [2.0] x
|       |-----Portal Examples  [2.1] x
|       |-----EBCC  [2.2] x
|-----Platform Samples and Utilities  [3] x
|       |-----QuickStart  [3.0] x
|       |-----Platform Tour  [3.1] x
```

=> Enter number exactly as it appears in brackets to toggle selection OR [Exit] [Previous] [Next] > next

By default, all components except the WebLogic Integration Client are selected as indicated by the x (UNIX systems), or check mark (Windows systems), at the end of each line. To deselect a component, type the numeric code for the component on the command line exactly as it appears within the brackets. For example, if you do not want to install the Server Examples for WebLogic Server, type 0.2 on the command line.

**Note:** The word `Installed` is shown in brackets for any components you have already installed on your system.

When you are finished selecting components, press Enter or type `next`. You are prompted to confirm your selection. On the command line, type 1 or press Enter to accept your selection. Otherwise, type 2 to return to the Choose Components panel where you can modify your selections.

**Note:** When you select or deselect components to install, the installation program checks for dependencies between components and automatically modifies the list of selected components. For example, if you deselect the WebLogic Server component, the WebLogic Integration and WebLogic Portal servers and samples, and the WebLogic Integration Client are also deselected, since they require the WebLogic Server to run. You can, however, install the EBCC subcomponent since it is a client component and does not require that the server be installed on the same machine.

If you are installing from CD-ROM, or are using the standalone version of the installation program (package installer method), the Choose Product Directory prompt is displayed. Go to step 7.

If you are using the net installer (installation program filenames beginning with `net_`), the Specify Download Options prompt is displayed.

6. Indicate your preferences for downloading the software. The installation program presents the following options:

SPECIFY DOWNLOAD OPTIONS

- 1- Modify Storage directory (none)
- 2- Modify Remove download files after installation (No)
- 3- Modify Proxy Host (none)
- 4- Modify Proxy Port (none)

Enter a number or [Exit] [Previous] [Next] >

If you have previously installed WebLogic Platform and specified a storage directory during the installation process, the full pathname for that directory is displayed as the default. To accept the defaults presented, type `next` or press Enter. If you have not specified a download storage directory in a previous installation and you want to save the download files, you need to specify a directory before you can proceed with the installation. To specify a storage directory or modify any of the other options, do the following:

- Type 1 to specify a storage directory to which you want to download the software components. When prompted, type the full pathname for the desired directory. If the directory does not exist, the installation program creates it for you.
- Type 2 if you want the downloaded files deleted after the installation is complete. If you do so, the download options are displayed again, and the `Modify Remove download files after installation` option is set to `yes`. If you accept the default for this option (`No`), the downloaded files are saved to the storage directory you specified.
- Indicate if you want to use an HTTP Proxy server for the download by providing values for the `Modify Host` and `Modify Port` options as follows:

Type 3 to specify a host. At the prompt, enter the name or IP address of the proxy server.

Type 4 to specify a port. At the prompt, enter the port number of the proxy server.

For additional information about downloading the software, see [“Web Distribution of WebLogic Platform” on page 1-7](#).

After you have indicated your preferences, the files begin downloading to the storage directory you specified. When the download is complete, the installation program verifies that the

component archive files downloaded successfully. If the installation program cannot verify the integrity of the download, the following message is displayed:

```
The required installation files could not be verified. You
may download them from BEA or select different components.
```

When the verification is complete, the Choose Product Directory prompt is displayed.

7. Specify the directory in which you want to install the WebLogic Platform software. Select the default product directory (*bea\_home/weblogic700*) or create a new product directory. If you specify a new directory, the installation program automatically creates the directory for you.

The choices displayed in this section are as follows:

```
Choose Product Directory:
  Product Directory= [/home/bea/weblogic700]
```

```
Select Option:
  1 - Input new Product Directory
  2 - Reset to default
```

```
Enter index number OR [Exit] [Previous] [Next] >
```

Do one of the following:

- Press Enter, type 2 or next, to accept the current selection. If you type 2 at the initial prompt, you accept the default product directory (*/home/bea/weblogic700* in this example).
- Type 1 to enter a new product installation directory. The following text is displayed:

```
Choose Product Directory:
  Product Directory = [/home1/beahome2/weblogic700]
```

```
Input new Product Directory OR [Exit] [Previous] [Next] >
```

Enter the *full path* to the directory in which you want to install WebLogic Platform software. For example:

```
/home3/weblogic700
```

When you press Enter, the pathname you entered is displayed as the product directory. Press Enter or type next. The following text is displayed:

```
Choose Product Directory:
  ->1| Yes, use this product directory [/home3/weblogic700]
      2| No, select another product directory
```

```
Enter index numbers to select OR [Exit] [Previous] [Next] >
```

Verify that your entry is correct, then type 1 or press Enter to proceed with the installation. Otherwise, type 2 to return to the Choose Product Directory panel where you can modify your entry.

At this point, the installation program installs the files to the directory you specified.

**Note:** It is normal for the installation program to stop for a fairly long time, especially at the end. The installation program is still working when this occurs.

If you are performing a typical installation, the installation is complete. Press Enter to exit the installation program. If you are performing a custom installation, the Run Configuration Wizard prompt is displayed.

8. Indicate if you want to run the Configuration Wizard to create an application domain by selecting the appropriate option. The console displays the following options:

Run Configuration Wizard

```
->1 - Yes, run Configuration Wizard to create my application domain
    2 - No, skip Configuration Wizard
```

Enter index number to select OR [Exit] [Previous] [Next]>

Press Enter or type 1 to launch the Configuration Wizard. Type 2 or next to skip the Configuration Wizard. You can launch it again after completing the installation.

You can use the Configuration Wizard to create and configure custom WebLogic domains. A WebLogic domain is an interrelated set of WebLogic Server resources that are managed as a unit. A domain includes one or more WebLogic Servers, and may also include WebLogic Server clusters.

For more information about the Configuration Wizard, see [“Using the Configuration Wizard” on page 2-9](#). Complete details are provided in *Using the Configuration Wizard* at the following URL:

<http://e-docs.bea.com/platform/docs70/configwiz/index.html>

After you have created your domains or typed 2 to skip the Configuration Wizard, the installation is complete.

9. Press Enter to exit the installation program.

## What's Next?

When you install WebLogic Platform, the installation program installs an evaluation license file in the BEA Home directory so that you can start using the product immediately. We recommend that you use the QuickStart application to familiarize yourself with the software, take the WebLogic Platform Tour, and execute the samples provided. For additional information, see [Chapter 8, “Performing Post-Installation Tasks.”](#)

## Installing WebLogic Platform Using Console-Mode Installation

# Installing WebLogic Platform Using Silent-Mode Installation

The following sections describe how to install WebLogic Platform using the installation program in silent mode on both Windows and UNIX systems:

- [What Is Silent-Mode Installation?](#)
- [Before You Start](#)
- [Using Silent-Mode Installation: Main Steps](#)
- [Creating a Silent-Mode Installation Template File](#)
- [Starting the Silent-Mode Installation Process on a Windows System](#)
- [Starting the Silent-Mode Installation Process on a UNIX System](#)
- [Sample Template Files for Silent-Mode Installation](#)
- [What's Next?](#)

## What Is Silent-Mode Installation?

Silent-mode installation is a way of setting installation configurations only once and then using those configurations to duplicate the installation on many machines. During installation in silent mode, the installation program reads the settings for your configuration from an XML file that you create prior to beginning the installation. The installation program does not display any configuration options during the installation process. Silent-mode installation works on both Windows and UNIX systems.

**Note:** Using silent-mode installation implies your consent to the BEA License Agreement. You neither see a copy of the BEA Software License Agreement nor have any means to accept the terms of the agreement.

The instructions in this section assume that you have already acquired the installation program, either on CD or from the Web. For more information, see [“WebLogic Platform Distribution Methods” on page 1-7](#).

## Before You Start

Before you start the WebLogic Platform installation, make sure the platform you are using is supported. For a complete list of supported platforms, see the *Supported Platforms* page at the following URL:

<http://e-docs.bea.com/platform/docs70/support/index.html>

You should also read [Chapter 1, “Preparing to Install WebLogic Platform.”](#)

**Note:** You cannot reinstall WebLogic Platform over a previous WebLogic Platform installation. You must first uninstall WebLogic Platform, as described in [Chapter 7, “Uninstalling WebLogic Platform,”](#) or install in another location.

## Using Silent-Mode Installation: Main Steps

The silent-mode installation process comprises two tasks:

1. Creating a template file that defines the configuration settings that a user normally enters during an interactive installation process, such as graphical or console-mode installation. For example, values for the BEA Home directory, the product directory, and options for the Configuration Wizard are supplied in a silent-mode template file.

For a detailed procedure, see [“Creating a Silent-Mode Installation Template File” on page 4-3](#). For a sample template file, see [“Sample Template Files for Silent-Mode Installation” on page 4-12](#).

2. Launching the silent-mode installation process using the template file you created in step 1.

For a detailed procedure, see [“Starting the Silent-Mode Installation Process on a Windows System” on page 4-9](#) or [“Starting the Silent-Mode Installation Process on a UNIX System” on page 4-10](#).



## Important Notes About Silent-Mode Installation

You need to be aware of the following items when you are performing an installation in silent mode:

- You must use the package installer for silent-mode installation. Silent-mode installation is not supported with the net installer. Filenames for the net installer version of the installation program are preceded by `net_`, for example `net_platformXXX_solaris.bin`, where `XXX` is the version number of the software you are installing. Do not attempt to use installation programs with filenames beginning with `net_` for silent-mode installation.
- Silent-mode installation supports typical installation only: you must install *all* the components of WebLogic Platform. For information about the components installed in a typical installation, see [“Choosing the Type of Installation” on page 1-14](#).
- Silent-mode installation requires the same temporary disk space and uses the same temporary storage directories as a standard installation. For more information, see [“Temporary Disk Space Requirements” on page 1-12](#). The installation program does not prompt you if there is not enough space in the temporary directory.
- A silent-mode installation takes the same amount of time as a standard installation. At the beginning of a silent-mode installation, an initial installation program window or message appears briefly, indicating that the installation has started. No message is displayed indicating the installation is in progress or has completed successfully.
- Incorrect entries in the `silent.xml` file can cause installation failures. To help you determine the cause of a failure, we recommend that you create a log file when you start the installation.
- The XML definition (`<?xml version="1.0" encoding="UTF-8"?>`) must be at the very beginning of the `silent.xml` template file. There cannot be any spaces or line breaks before the XML definition.

## Creating a Silent-Mode Installation Template File

When you install WebLogic Platform in silent mode, the installation program does not prompt you to provide information in real time. Instead, it queries an XML file called `silent.xml` to determine which installation options should be implemented and which values to use for required configuration settings. Therefore, before you can run the installation program in silent mode, you must first create a `silent.xml` file in which you specify the installation options that you want to have invoked.

**Note:** Incorrect entries in the `silent.xml` file can cause installation failures. To help you determine the cause of a failure, we recommend that you create a log file when you start the installation.

To create a template file for use in the silent-mode installation process, follow these steps:

1. From a supported browser, download a sample template file for silent-mode installation. Several sample templates are available for various configurations:
  - [Comprehensive Template File Sample](#)
  - [Sample Template for Configuring a Domain with an Administration Server with Managed Servers](#)
  - [Sample Template for Configuring a Cluster of Managed Servers](#)
  - [Sample Template for Adding a Managed Server to an Existing Domain](#)

The comprehensive template illustrates how to configure your domain for functionality from all the WebLogic Platform components (WebLogic Server, WebLogic Workshop, WebLogic Integration, and WebLogic Portal). The other three templates are narrower in scope, as suggested by their titles. All four templates are available later in this chapter at the following location:

<http://e-docs.bea.com/platform/docs70/install/silent.html#template>

You can download these templates from a browser using the instructions that are provided with each template. (If you are viewing these templates in PDF format, you can copy them directly from the Adobe Reader.)

2. Save the contents of the template as a text file named `silent.xml` in the directory containing the WebLogic Platform installation program.

**Note:** The XML definition (`<?xml version="1.0" encoding="UTF-8"?>`) must be at the very beginning of the template file. There cannot be any spaces or line breaks before the XML definition.
3. In the `silent.xml` file, create your desired configuration by assigning values for the data-value names shown in the following table.

**Note:** You must follow XML guidelines for characters when modifying values. That is, you cannot use characters reserved for use in XML, such as `<`, `>`, `[`, and `]`.

**Table 4-1 Silent-Mode Installation Template Values**

| For this data-value name . . .                                             | Enter the following value . . .                                                                                                                                                                                                                                                                                                                                                                                                                                                                                |
|----------------------------------------------------------------------------|----------------------------------------------------------------------------------------------------------------------------------------------------------------------------------------------------------------------------------------------------------------------------------------------------------------------------------------------------------------------------------------------------------------------------------------------------------------------------------------------------------------|
| BEAHOME                                                                    | <p>The full pathname for the BEA Home directory of your choice. For details about the BEA Home directory, see <a href="#">“Choosing a BEA Home Directory” on page 1-15</a>.</p> <p><b>Note:</b> For silent-mode installation only, the BEA Home directory specified for this value cannot exist before installing the software.</p>                                                                                                                                                                            |
| USER_INSTALL_DIR                                                           | <p>The full pathname for the directory where you want to install the WebLogic Platform software. For details, see <a href="#">“Choosing a Product Installation Directory” on page 1-18</a>.</p>                                                                                                                                                                                                                                                                                                                |
| RUN_DOMAIN_WIZARD                                                          | <p>true or yes to run the Configuration Wizard and create a domain as part of the installation, false or no to skip it. If you choose to run the Configuration Wizard, you must specify values for the appropriate data-values as listed in the following rows in this table. For more information, see <i>Using the Configuration Wizard</i> at the following URL:<br/> <a href="http://e-docs.bea.com/platform/docs70/confgwiz/index.html">http://e-docs.bea.com/platform/docs70/confgwiz/index.html</a></p> |
| <i>The remaining values apply to options for the Configuration Wizard.</i> |                                                                                                                                                                                                                                                                                                                                                                                                                                                                                                                |
| domain.directory                                                           | <p>The full path to the domain directory. The name of the domain directory should match the name of the domain.</p> <p><b>Note:</b> On UNIX systems, do not include spaces in the path of the domain directory.</p>                                                                                                                                                                                                                                                                                            |
| C_domainName                                                               | <p>Name of the domain to be created. The name must match the directory name specified for domain.directory.</p> <p><b>Note:</b> On UNIX systems, do not include spaces in the domain name.</p>                                                                                                                                                                                                                                                                                                                 |
| C_serverName                                                               | <p>Name of the server to be configured. Used as the server name for standalone servers, the name of the Administration Server for domains with Managed Servers and Clustered Servers, and the name of the Managed Server for Managed Server with owning Admin Server configurations.</p> <p><b>Note:</b> Do not include spaces in the server name.</p>                                                                                                                                                         |

**Table 4-1 Silent-Mode Installation Template Values**

| For this data-value name . . . | Enter the following value . . .                                                                                                                                                                                                                                                                   |
|--------------------------------|---------------------------------------------------------------------------------------------------------------------------------------------------------------------------------------------------------------------------------------------------------------------------------------------------|
| C_username                     | An administrative user name to start the server and access the Administration Console. Do not include spaces or XML reserved characters in this name.                                                                                                                                             |
| C_password                     | A password for the administrative user. It must contain at least eight characters but no more than 20 characters. Do not use spaces or XML reserved characters.                                                                                                                                   |
| C_serverListenAddress          | The system IP address or DNS name for the server. You can leave this blank if you want to use localhost and the server IP address to access the server and the Administration Console.                                                                                                            |
| C_serverListenPort             | A dedicated TCP/IP port number for the Administration Server. This number specifies the port at which the server listens for connections. The port number can be any integer from 1 to 65535.                                                                                                     |
| C_serverSSLListenPort          | A dedicated secure listen port number for the Administration Server. The secure listen port number is used for secure Web connections based on the secure sockets layer (SSL) protocol. The port number can be any integer from 1 to 65535 and cannot be the same port as the C_serverListenPort. |
| ClusterName                    | Name of the cluster to be created. This data-value is only applicable if you are creating a cluster.<br><br><b>Note:</b> Do not include spaces in the cluster name.                                                                                                                               |
| ClusterPort                    | The MultiCast port used by the Administration Server to communicate with clustered servers. Typically, 7777. This data-value is only applicable if you are creating a cluster.                                                                                                                    |
| ClusterMCAddr                  | The cluster MultiCast IP address used by the Administration Server to communicate with clustered servers. Typically, 237.0.0.1. This value must be a class D IP address. Valid MultiCast addresses begin with 237, 238, or 239. This data-value is only applicable if you are creating a cluster. |
| ADMIN_HOST_NAME_OR_IP          | The Administration Server name or IP address. Used when configuring a Managed Server.                                                                                                                                                                                                             |

**Table 4-1 Silent-Mode Installation Template Values**

| For this data-value name . . .                         | Enter the following value . . .                                                                                                                                                                                                                                                                                                                             |
|--------------------------------------------------------|-------------------------------------------------------------------------------------------------------------------------------------------------------------------------------------------------------------------------------------------------------------------------------------------------------------------------------------------------------------|
| ADMIN_LISTEN_PORT                                      | The port at which the Administration Server listens. Used when configuring a Managed Server.                                                                                                                                                                                                                                                                |
| MANAGED_SERVER_<br>REGISTERED_NAME_IN_ADMIN            | The machine or server name as registered with the Administration Server. Used when configuring a Managed Server.                                                                                                                                                                                                                                            |
| SERVER-RUN-AS                                          | The type of server configuration to be created by the Configuration Wizard: Single Server (Standalone Server), Admin Server with Managed Server(s), Admin Server with Clustered Managed Server(s), or Managed Server (with owning Admin Server configuration).                                                                                              |
| selectedJar                                            | The full path of the template JAR file used by the Configuration Wizard to create the domain and configure servers.                                                                                                                                                                                                                                         |
| INSTALL_NT_SERVICE<br>(Windows systems only)           | <p>yes to install the configured server as a Windows service; no to skip installing the configured server as a Windows service.</p> <p><b>Note:</b> This data-value pair is used only if the selected template supports installing the server as a Windows service. If it does not, the value is ignored.</p> <p>This value is ignored on UNIX systems.</p> |
| INSTALL_WINDOWS_STARTUP_MENU<br>(Windows systems only) | <p>yes to add an option to the Windows Start menu to start the server; no (the default value) to skip the Start menu option.</p> <p><b>Note:</b> This data-value pair is only used if the selected template supports installing Start menu options. If not, the value is ignored.</p> <p>This value is ignored on UNIX systems.</p>                         |
| DB_EMAIL_HOST                                          | <p>The default e-mail or SMTP server.</p> <p><b>Note:</b> This data-value pair is used only if the selected template supports WebLogic Integration functionality. If it does not, the value is ignored.</p>                                                                                                                                                 |

**Table 4-1 Silent-Mode Installation Template Values**

| For this data-value name . . . | Enter the following value . . .                                                                                                                                                                                                                                                                                                                                                                                                                                                                                                                                                                                                                                                                                                                                         |
|--------------------------------|-------------------------------------------------------------------------------------------------------------------------------------------------------------------------------------------------------------------------------------------------------------------------------------------------------------------------------------------------------------------------------------------------------------------------------------------------------------------------------------------------------------------------------------------------------------------------------------------------------------------------------------------------------------------------------------------------------------------------------------------------------------------------|
| DB_EMAIL_ADDRESS               | <p>The address from which e-mail can be sent by a workflow instance in WebLogic Integration.</p> <p><b>Note:</b> This data-value pair is used only if the selected template supports WebLogic Integration functionality. If it does not, the value is ignored.</p>                                                                                                                                                                                                                                                                                                                                                                                                                                                                                                      |
| managedServers (data group)    | <p>The type of configuration for the group of Managed Servers in the domain. This data group is relevant only when you select “Admin Server with Managed Server(s)” as the value for SERVER-RUN-AS.</p> <p>For each Managed Server in your configuration, specify values for the following:</p> <ul style="list-style-type: none"> <li>• managedServerRegName—the name of the server that is registered with the Administration Server. Use alphanumeric characters only; do not include spaces.</li> <li>• managedServerHostIP—the IP address or DNS name of the machine on which the server is installed.</li> <li>• managedServerListenPort—the listen port for the server.</li> <li>• managedServerSSLListenPort—the secure listen port for the server.</li> </ul>  |
| clusterServers (data group)    | <p>The type of configuration for the group of clustered Managed Servers in the domain. This data group is relevant only when you select “Admin Server with Clustered Managed Server(s)” as the value for SERVER-RUN-AS.</p> <p>For each server in the cluster, specify values for the following:</p> <ul style="list-style-type: none"> <li>• clusterServerRegName—the name of the server that is registered with the Administration Server. Alphanumeric characters only; do not include spaces.</li> <li>• clusterServerHostIP—the IP address or DNS name of the machine on which the server is installed.</li> <li>• clusterServerListenPort—the listen port for the server.</li> <li>• clusterServerSSLListenPort—the secure listen port for the server.</li> </ul> |

For more information on the Configuration Wizard and the options you can select, see *Using the Configuration Wizard* at the following URL:

<http://e-docs.bea.com/platform/docs70/configwiz/index.html>

## Starting the Silent-Mode Installation Process on a Windows System

To start the silent-mode installation process on a Windows system, follow these steps:

1. Log in to the Windows system.

If you want to install WebLogic Platform as a Windows service, you must have Administrator privileges. For information about installing WebLogic Platform as a Windows service, see “Setting Up a WebLogic Server Instance as a Windows Service” in the *BEA WebLogic Server Administration Guide* at the following URL:

<http://e-docs.bea.com/wls/docs70/adminguide/startstop.html#SettingUpServerAsWindowsService>

2. Open an MS-DOS command prompt window.
3. Go to the directory that contains the installation file and launch the installation procedure by entering the following command, making sure to specify the *full* pathname of the `silent.xml` template file:

```
filename.exe -mode=silent -silent_xml=full_path_to_silent.xml
```

Here `filename.exe` is the name of the WebLogic Platform installation file, and `full_path_to_silent.xml` is the *full* path to the `silent.xml` template file.

**Note:** To create a verbose log file during installation, include the `-log=full_path_to_log_file` option in the command line. For example:

```
platformXXX_win32.exe -mode=silent -silent_xml=D:\silent.xml  
-log=D:\logs\platform_install.log
```

The path must specify a file. You cannot create a folder simply by including a name for it in a pathname; your path should specify only existing folders. If your path includes a nonexistent folder when you execute the command, the installation program does not create the log file. In the filename used in this example, `xxx` is the version number of the software you are installing.

## Starting the Silent-Mode Installation Process on a UNIX System

The WebLogic Platform installation program requires a Java run-time environment (JRE) to run. A Java 2 Software Development Kit (SDK), which includes a JRE, is bundled in the Windows installation program, and in some UNIX installation programs (those with filenames ending in `.bin`). For other UNIX platforms, the WebLogic Platform installation program does not include the Java 2 SDK.

Filenames for these installation programs end in `.jar`. To run the `.jar` installation programs, you must have the appropriate version of the Java 2 SDK installed on your system, and include the `bin` directory of the SDK at the front of the `PATH` variable. It is important that you use an SDK because the installation process sets the `JAVA_HOME` and related variables to point to this directory.

## Starting Silent-Mode Installation for `.bin` Installation Files

**Note:** Incorrect entries in the `silent.xml` file can cause installation failures. To help you determine the cause of a failure, we recommend that you create a log file when you start the installation.

To start the silent-mode installation process using installation files ending in `.bin`, follow these steps:

1. Log in to the target UNIX system.
2. Open a command-line shell.
3. Go to the directory that contains the installation file and launch the installation procedure by entering the following command, making sure to specify the *full* pathname of the `silent.xml` template file:

```
chmod a+x filename
```

```
./filename.bin -mode=silent -silent_xml=/full_path_to_silent.xml
```

Here `filename.bin` is the name of the WebLogic Platform installation file, and `full_path_to_silent.xml` is the *full* path to the `silent.xml` template file.

**Note:** To create a verbose log file during installation, include the `-log=full_path_to_log_file` option in the command line. For example:

```
platformXXX_solaris.bin -mode=silent -silent_xml=/home/silent.xml  
-log=/home/logs/platform_install.log
```

The path must specify a file. You cannot create a folder simply by including a name for it in a pathname; your path should specify only existing folders. If your path includes a nonexistent folder when you execute the command, the installation program does not create the log file. In the filename used in this example, `xxx` is the version number of the software you are installing.



## Starting Silent-Mode Installation for .jar Installation Files

**Note:** Incorrect entries in the `silent.xml` file can cause installation failures. To help you determine the cause of a failure, we recommend that you create a log file when you start the installation.

To start the silent-mode installation process for installation files ending in `.jar`, follow these steps:

1. Log in to the target UNIX system.
2. Open a command-line shell.
3. Include the `bin` directory of the appropriate SDK at the beginning of the `PATH` variable on the target system. For example:

```
PATH=JAVA_HOME/bin:$PATH
export PATH
```

Here `JAVA_HOME` is the full path to the SDK directory.

4. Go to the directory that contains the installation file and start the installation procedure as described in the following table, making sure to specify the *full* pathname of the `silent.xml` template file.

| If you are . . .                             | Enter the following command . . .                                                                                                |
|----------------------------------------------|----------------------------------------------------------------------------------------------------------------------------------|
| Installing on a UNIX platform other than AIX | <pre>java -jar filename.jar -mode=silent -silent_xml=/full_path_to_silent.xml</pre>                                              |
| Installing on an AIX platform                | <pre>java -classpath filename.jar com.bea.installer.BEAInstallController -mode=silent -silent_xml=/full_path_to_silent.xml</pre> |

In both cases, `filename.jar` is the name of the WebLogic Platform installation file (for example `pj_platformXXX_generic.jar`, where `XXX` is the version number of the software you are installing) and `full_path_to_silent.xml` is the *full* path to the `silent.xml` template file.

Platform support sometimes varies by service pack release. To ensure you are installing the product on a supported platform, see the *Supported Platforms* page at the following URL:

<http://e-docs.bea.com/platform/docs70/support/index.html>

**Note:** To create a verbose log file during installation, include the `-log=full_path_to_log_file` option in the command line. For example:

```
pj_platformXXX_generic.jar -mode=silent  
-silent_xml=/home/silent.xml -log=/home/logs/platform_install.log
```

The path must specify a file. You cannot create a folder simply by including a name for it in a pathname; your path should specify only existing folders. If your path includes a nonexistent folder when you execute the command, the installation program does not create the log file. In the filename used in this example, `xxx` is the version number of the software you are installing.

## Sample Template Files for Silent-Mode Installation

This section provides samples of template files you can use for various types of domain configuration during a silent installation:

- [Comprehensive Template File Sample](#)
- [Sample Template for Configuring a Domain with an Administration Server with Managed Servers](#)
- [Sample Template for Configuring a Cluster of Managed Servers](#)
- [Sample Template for Adding a Managed Server to an Existing Domain](#)

You can download or copy the files in this section and modify them for your own needs, or study the differences (highlighted in bold) among the latter three templates, as a way of learning which parameter settings control which aspects of a configuration.

To learn more about the process of configuring domains with the Configuration Wizard, see “Creating a New WebLogic Domain” in *Using the Configuration Wizard* at:

<http://e-docs.bea.com/platform/docs70/configwiz/createdom.html>

## Comprehensive Template File Sample

The sample template shown in [Listing 4-1](#) illustrates how you can configure a wide-ranging WebLogic Platform domain with the functionality of all components: WebLogic Server, WebLogic Workshop, WebLogic Integration, and WebLogic Portal.

To download this template from a browser, complete the following steps:

1. Click the following link:

<http://e-docs.bea.com/platform/docs70/install/scripts/silent-comp.xml>

2. In the popup window that is displayed, choose **File**—**Save As...**

3. Specify the file name `silent.xml` and save it in the directory containing the WebLogic Platform installation program.

In addition to showing you how template files are structured, this file also provides you with a simple method of putting together your own template file. You can modify it in accordance with [Table 4-1](#), and use it to install WebLogic Platform 7.0 in silent mode.

#### Listing 4-1 Comprehensive Template File Sample

---

```
<?xml version="1.0" encoding="UTF-8"?>

<domain-template-descriptor>

<input-fields>
  <data-value name="BEAHOME" value="C:\bea" />
  <data-value name="USER_INSTALL_DIR" value="C:\bea\weblogic700" />
  <data-value name="RUN_DOMAIN_WIZARD" value="true" />

<!--The following values are used by the Configuration Wizard to create and
configure a domain.-->

  <data-value name="domain.directory" value="C:\bea\user_domains\mydomain" />
  <data-value name="C_domainName" value="mydomain" />
  <data-value name="C_serverName" value="myserver" />
  <data-value name="C_username" value="system" />
  <data-value name="C_password" value="weblogic" />
  <data-value name="C_serverListenAddress" value="" />
  <data-value name="C_serverListenPort" value="7001" />
  <data-value name="C_serverSSLListenPort" value="7002" />

<!--If you are configuring an Admin Server with Clustered Managed Servers, please
uncomment the following.-->
<!-- <data-value name="ClusterName" value="mycluster" /> -->
<!-- <data-value name="ClusterPort" value="7777" /> -->
<!-- <data-value name="ClusterMCAddr" value="237.0.0.1" /> -->

<!--The selectedJar value determines the template that the Configuration Wizard
uses to create a domain and configure servers.-->

  <data-value name="selectedJar"
value="C:\bea\weblogic700\common\templates\domains\wls.jar" />

<!--The SERVER-RUN-AS value determines the server configuration that the
Configuration Wizard creates. There are four options as indicated by the
following lines. Comment out the three options you do not want to use.-->
```

## Installing WebLogic Platform Using Silent-Mode Installation

```
        <data-value name="SERVER-RUN-AS" value="Single Server (Standalone
Server)" />
<!--      <data-value name="SERVER-RUN-AS" value="Admin Server with Managed
Server(s)" /> -->
<!--      <data-value name="SERVER-RUN-AS" value="Admin Server with Clustered
Managed Server(s)" /> -->
<!--      <data-value name="SERVER-RUN-AS" value="Managed Server (with owning Admin
Server configuration)" /> -->
```

<!--The following four data-values depend on options selected in the Configuration Wizard template specified above. If the related options are not selected in the template, the values for the following four data-values are ignored.-->

```
    <data-value name="INSTALL_NT_SERVICE"           value="no" />
    <data-value name="INSTALL_WINDOWS_STARTUP_MENU" value="no" />
    <data-value name="DB_EMAIL_HOST"                 value="myserver" />
    <data-value name="DB_EMAIL_ADDRESS"              value="name@bea.com" />
```

<!-- For Portal and Platform domain, please uncomment the following -->

```
<!--      <file-dir-customization> -->
<!--          <dirCopy srcDir="bea/portal/webapps/tools" -->
<!--              targetDir="beaApps/portalApp/tools"/> -->
<!--          <dirCopy srcDir="bea/portal/webapps/toolSupport" -->
<!--              targetDir="beaApps/portalApp/toolSupport"/> -->
<!--          <dirCopy srcDir="bea/portal/webapps/datasync" -->
<!--              targetDir="beaApps/portalApp/datasync"/> -->
<!--          <dirCopy srcDir="bea/portal/apps/paymentWSApp" -->
<!--              targetDir="beaApps/paymentWSApp"/> -->
<!--          <dirCopy srcDir="bea/portal/apps/taxWSApp" -->
<!--              targetDir="beaApps/taxWSApp"/> -->
<!--          <dirCopy srcDir="bea/portal/apps/jars" -->
<!--              targetDir="beaApps/portalApp"/> -->
<!--          <dirCopy srcDir="bea/portal/projects/portalApp-project" -->
<!--              targetDir="beaApps/portalApp-project"/> -->
<!--      </file-dir-customization> -->
```

<!--The managedServers data group determines the configuration of the group of managed servers in the domain. This data group applies only when you select "Admin Server with Managed Server(s)" as the value for SERVER-RUN-AS. To use this data group, uncomment all applicable lines.-->

```
<!--      <data-group name="managedServers"> -->
<!--          <data-element> -->
<!--              <data-value name="managedServerRegName" value="managed1" /> -->
<!--              <data-value name="managedServerHostIP" value="host1" /> -->
```

```

<!--      <data-value name="managedServerListenPort"      value="1001" /> -->
<!--      <data-value name="managedServerSSLListenPort" value="1002" /> -->
<!--    </data-element> -->
<!--    <data-element> -->
<!--      <data-value name="managedServerRegName"      value="managed2" /> -->
<!--      <data-value name="managedServerHostIP"      value="host2" /> -->
<!--      <data-value name="managedServerListenPort"  value="2001" /> -->
<!--      <data-value name="managedServerSSLListenPort" value="2002" /> -->
<!--    </data-element> -->
<!--    <data-element> -->
<!--      <data-value name="managedServerRegName"      value="managed3" /> -->
<!--      <data-value name="managedServerHostIP"      value="host3" /> -->
<!--      <data-value name="managedServerListenPort"  value="3001" /> -->
<!--      <data-value name="managedServerSSLListenPort" value="3002" /> -->
<!--    </data-element> -->
<!--    <data-element> -->
<!--      <data-value name="managedServerRegName"      value="managed4" /> -->
<!--      <data-value name="managedServerHostIP"      value="host4" /> -->
<!--      <data-value name="managedServerListenPort"  value="4001" /> -->
<!--      <data-value name="managedServerSSLListenPort" value="4002" /> -->
<!--    </data-element> -->
<!--  </data-group> -->

```

<!--The clusterServers data group determines the configuration of the group of managed clustered servers in the domain. This data group applies only when you select "Admin Server with Clustered Managed Server(s)" as the value for SERVER-RUN-AS. To use this data group, uncomment all applicable lines.-->

```

<!--    <data-group name="clusterServers"> -->
<!--      <data-element> -->
<!--        <data-value name="clusterServerRegName"      value="cluster1" /> -->
<!--        <data-value name="clusterServerHostIP"      value="host1" /> -->
<!--        <data-value name="clusterServerListenPort"  value="1001" /> -->
<!--        <data-value name="clusterServerSSLListenPort" value="1002" /> -->
<!--      </data-element> -->
<!--      <data-element> -->
<!--        <data-value name="clusterServerRegName"      value="cluster2" /> -->
<!--        <data-value name="clusterServerHostIP"      value="host2" /> -->
<!--        <data-value name="clusterServerListenPort"  value="2002" /> -->
<!--        <data-value name="clusterServerSSLListenPort" value="2003" /> -->
<!--      </data-element> -->
<!--      <data-element> -->
<!--        <data-value name="clusterServerRegName"      value="cluster3" /> -->
<!--        <data-value name="clusterServerHostIP"      value="host3" /> -->
<!--        <data-value name="clusterServerListenPort"  value="3003" /> -->
<!--        <data-value name="clusterServerSSLListenPort" value="3004" /> -->
<!--      </data-element> -->
<!--    </data-group> -->
<!--      <data-value name="clusterServerRegName"      value="cluster4" /> -->

```

```
<!--          <data-value name="clusterServerHostIP"          value="host4" /> -->
<!--          <data-value name="clusterServerListenPort"      value="4004" /> -->
<!--          <data-value name="clusterServerSSLListenPort"    value="4005" /> -->
<!--          </data-element> -->
<!--      </data-group> -->

</input-fields>

</domain-template-descriptor>
```

---

## Sample Template for Configuring a Domain with an Administration Server with Managed Servers

The sample template shown in [Listing 4-2](#) can be used for configuring a domain that consists of an administration server plus one or more managed servers during a silent installation. The strings highlighted in bold are significant in defining the configuration. Compare the settings for these strings to the settings for corresponding strings in the other sample template files.

To download this template from a browser, complete the following steps:

1. Click the following link:  
<http://e-docs.bea.com/platform/docs70/install/scripts/silent-as-ms.xml>
2. In the popup window that is displayed, choose **File—Save As...**
3. Specify the file name `silent.xml` and save it in the directory containing the WebLogic Platform installation program.

You can modify this file in accordance with [Table 4-1](#), and use it to install WebLogic Platform 7.0 in silent mode.

For more information about how to configure a domain with an administration server and one or more managed servers, see “Creating a Domain with Administration Server and Managed Servers” in *Using the Configuration Wizard* at:

<http://e-docs.bea.com/platform/docs70/configwiz/creatdom.html>

---

### Listing 4-2 Configuring a Domain with an Administration Server with Managed Server(s)

---

```
<?xml version="1.0" encoding="UTF-8" ?>
```

```

<domain-template-descriptor>

<input-fields>
  <data-value name="BEAHOME"           value="C:\bea" />
  <data-value name="USER_INSTALL_DIR"   value="C:\bea\weblogic700" />
  <data-value name="RUN_DOMAIN_WIZARD"  value="true" />

<!--The following values are used by the Configuration Wizard to create and
configure a domain.-->

  <data-value name="domain.directory"   value="C:\bea\user_domains\d1" />
  <data-value name="C_domainName"       value="d1" />
  <data-value name="C_serverName"       value="admin" />
  <data-value name="C_username"         value="system" />
  <data-value name="C_password"         value="weblogic" />
  <data-value name="C_serverListenAddress" value=" " />
  <data-value name="C_serverListenPort"  value="8001" />
  <data-value name="C_serverSSLListenPort" value="8002" />

<!-- The selectedJar value determines the template that the Configuration Wizard
uses to create a domain and configure servers.-->
  <data-value name="selectedJar"
value="C:\bea\weblogic700\common\templates\domains\wls.jar" />

<!-- For Portal and Platform domain, please uncomment the following -->

<!-- <file-dir-customization> -->
<!-- <dirCopy srcDir="bea/portal/webapps/tools" -->
<!-- targetDir="beaApps/portalApp/tools"/> -->
<!-- <dirCopy srcDir="bea/portal/webapps/toolSupport" -->
<!-- targetDir="beaApps/portalApp/toolSupport"/> -->
<!-- <dirCopy srcDir="bea/portal/webapps/datasync" -->
<!-- targetDir="beaApps/portalApp/datasync"/> -->
<!-- <dirCopy srcDir="bea/portal/apps/paymentWSApp" -->
<!-- targetDir="beaApps/paymentWSApp"/> -->
<!-- <dirCopy srcDir="bea/portal/apps/taxWSApp" -->
<!-- targetDir="beaApps/taxWSApp"/> -->
<!-- <dirCopy srcDir="bea/portal/apps/jars" -->
<!-- targetDir="beaApps/portalApp"/> -->
<!-- <dirCopy srcDir="bea/portal/projects/portalApp-project" -->
<!-- targetDir="beaApps/portalApp-project"/> -->
<!-- </file-dir-customization> -->

<!--The following four data-values depend on options selected in the
Configuration Wizard template specified above. If the related options are not
selected in the template, the values for the following four data-values are
ignored.-->

  <data-value name="INSTALL_NT_SERVICE" value="no" />

```

```
<data-value name="INSTALL_WINDOWS_STARTUP_MENU" value="no" />
<data-value name="DB_EMAIL_HOST" value="myserver" />
<data-value name="DB_EMAIL_ADDRESS" value="name@bea.com" />

<!-- The SERVER-RUN-AS value determines the server configuration that the
Configuration Wizard creates.-->

<data-value name="SERVER-RUN-AS" value="Admin Server with Managed Server(s)" />
  <data-group name="managedServers">
    <data-element>
      <data-value name="managedServerRegName" value="ms1" />
      <data-value name="managedServerHostIP" value="host1" />
      <data-value name="managedServerListenPort" value="1001" />
      <data-value name="managedServerSSLListenPort" value="1002" />
    </data-element>

    <data-element>
      <data-value name="managedServerRegName" value="ms2" />
      <data-value name="managedServerHostIP" value="host2" />
      <data-value name="managedServerListenPort" value="2001" />
      <data-value name="managedServerSSLListenPort" value="2002" />
    </data-element>
  </data-group>

</input-fields>

</domain-template-descriptor>
```

---

## Sample Template for Configuring a Cluster of Managed Servers

The sample template shown in [Listing 4-3](#) can be used for configuring a domain that consists of an administration server plus a cluster of managed servers during a silent installation. The strings highlighted in bold are significant in defining the configuration. Compare the settings for these strings to the settings for corresponding strings in the other sample template files.

To download this template from a browser, complete the following steps:

1. Click the following link:

<http://e-docs.bea.com/platform/docs70/install/scripts/silent-clus.xml>

2. In the popup window that is displayed, choose **File**→**Save As...**



3. Specify the file name `silent.xml` and save it in the directory containing the WebLogic Platform installation program.

You can modify this file in accordance with [Table 4-1](#), and use it to install WebLogic Platform 7.0 in silent mode.

For more information about how to configure a domain with an administration server for a cluster of managed servers, see “Creating a Domain with Administration Server and Cluster” in *Using the Configuration Wizard* at:

<http://e-docs.bea.com/platform/docs70/configwiz/creatdom.html>

#### Listing 4-3 Configuring a Domain with Administration server and Clustered Managed Server(s)

```
<?xml version="1.0" encoding="UTF-8" ?>

<domain-template-descriptor>

<input-fields>
  <data-value name="BEAHOME" value="C:\bea" />
  <data-value name="USER_INSTALL_DIR" value="C:\bea\weblogic700" />
  <data-value name="RUN_DOMAIN_WIZARD" value="true" />

<!-- The following values are used by the Configuration Wizard to create and
configure a domain.-->
  <data-value name="domain.directory"
value="C:\bea\user_domains\myCluster" />
  <data-value name="C_domainName" value="myCluster" />
  <data-value name="C_serverName" value="admin" />
  <data-value name="C_username" value="system" />
  <data-value name="C_password" value="weblogic" />
  <data-value name="C_serverListenAddress" value="localhost" />
  <data-value name="C_serverListenPort" value="8001" />
  <data-value name="C_serverSSLListenPort" value="8002" />
  <data-value name="C_clusterName" value="mycluster" />
  <data-value name="C_clusterPort" value="7777" />
  <data-value name="C_clusterMCAddr" value="237.0.0.1" />

<!-- The selectedJar value determines the template that the Configuration
Wizard uses to create a domain and configure servers.-->
  <data-value name="selectedJar"
value="C:\bea\weblogic700\common\templates\domains\wls.jar" />

<!-- For Portal and Platform domain, please uncomment the following -->

<!-- <file-dir-customization> -->
```

## Installing WebLogic Platform Using Silent-Mode Installation

```
<!--      <dirCopy srcDir="bea/portal/webapps/tools"          -->
<!--      targetDir="beaApps/portalApp/tools"/>          -->
<!--      <dirCopy srcDir="bea/portal/webapps/toolSupport"    -->
<!--      targetDir="beaApps/portalApp/toolSupport"/>      -->
<!--      <dirCopy srcDir="bea/portal/webapps/datasync"        -->
<!--      targetDir="beaApps/portalApp/datasync"/>          -->
<!--      <dirCopy srcDir="bea/portal/apps/paymentWSApp"       -->
<!--      targetDir="beaApps/paymentWSApp"/>                -->
<!--      <dirCopy srcDir="bea/portal/apps/taxWSApp"           -->
<!--      targetDir="beaApps/taxWSApp"/>                     -->
<!--      <dirCopy srcDir="bea/portal/apps/jars"               -->
<!--      targetDir="beaApps/portalApp"/>                     -->
<!--      <dirCopy srcDir="bea/portal/projects/portalApp-project" -->
<!--      targetDir="beaApps/portalApp-project"/>            -->
<!--      </file-dir-customization>                             -->

<!--The following four data-values depend on options selected in the
Configuration Wizard template specified above. If the related options are not
selected in the template, the values for the following four data-values are
ignored.-->

<data-value name="INSTALL_NT_SERVICE"          value="no" />
<data-value name="INSTALL_WINDOWS_STARTUP_MENU" value="no" />
<data-value name="DB_EMAIL_HOST"                value="myserver" />
<data-value name="DB_EMAIL_ADDRESS"             value="name@bea.com" />

<!-- The SERVER-RUN-AS value determines the server configuration that the
Configuration Wizard creates.-->

<data-value name="SERVER-RUN-AS" value="Admin Server with Clustered
Managed Server(s)" />

<data-group name="clusterServers">
  <data-element>
    <data-value name="clusterServerRegName"          value="cs1" />
    <data-value name="clusterServerHostIP"            value="host1" />
    <data-value name="clusterServerListenPort"        value="1001" />
    <data-value name="clusterServerSSLListenPort"     value="1002" />
  </data-element>

  <data-element>
    <data-value name="clusterServerRegName"          value="cs2" />
    <data-value name="clusterServerHostIP"            value="host2" />
    <data-value name="clusterServerListenPort"        value="2001" />
    <data-value name="clusterServerSSLListenPort"     value="2002" />
  </data-element>
</data-group>

</input-fields>
```

```
</domain-template-descriptor>
```

---

## Sample Template for Adding a Managed Server to an Existing Domain

The sample template shown in [Listing 4-4](#) can be used for adding a managed server to an existing domain. The strings highlighted in bold are significant in defining the configuration. Compare the settings for these strings to the settings for corresponding strings in the other sample template files.

To download this template from a browser, complete the following steps:

1. Click the following link:

<http://e-docs.bea.com/platform/docs70/install/scripts/silent-add.xml>

2. In the popup window that is displayed, choose **File—Save As...**
3. Specify the file name `silent.xml` and save it in the directory containing the WebLogic Platform installation program.

You can modify this file in accordance with [Table 4-1](#), and use it to install WebLogic Platform 7.0 in silent mode.

For more information about how to add a managed server to an existing domain, see “Extending an Existing WebLogic Domain” in *Using the Configuration Wizard* at:

<http://e-docs.bea.com/platform/docs70/configwiz/creatdom.html>

### Listing 4-4 Template for Adding a Managed Server to an Existing Domain

---

```
<?xml version="1.0" encoding="UTF-8" ?>

<domain-template-descriptor>

<input-fields>
    <data-value name="BEAHOME"           value="C:\bea" />
    <data-value name="USER_INSTALL_DIR"  value="C:\bea\weblogic700" />
    <data-value name="RUN_DOMAIN_WIZARD" value="true" />

<!-- The following values are used by the Configuration Wizard to create and
configure a domain.-->
    <data-value name="domain.directory" value="C:\bea\user_domains\d2" />
```

## Installing WebLogic Platform Using Silent-Mode Installation

```
<data-value name="C_domainName" value="d2" />
<data-value name="C_serverName" value="ms1" />
<data-value name="C_username" value="system" />
<data-value name="C_password" value="weblogic" />
<data-value name="C_serverListenAddress" value="" />
<data-value name="C_serverListenPort" value="8001" />
<data-value name="C_serverSSLListenPort" value="8002" />
<data-value name="ADMIN_HOST_NAME_OR_IP" value="adminserver" />
<data-value name="ADMIN_LISTEN_PORT" value="9999" />
<data-value name="MANAGED_SERVER_REGISTERED_NAME_IN_ADMIN"
value="mmss1" />
<data-value name="MANAGED_SERVER_REGISTERED_NAME_IN_ADMIN"
value="mmss2" />

<!-- The selectedJar value determines the template that the Configuration Wizard
uses to create a domain and configure servers.-->
<data-value name="selectedJar"
value="C:\bea\weblogic700\common\templates\domains\wls.jar" />

<!-- For Portal and Platform domain, please uncomment the following -->

<!-- <file-dir-customization> -->
<!-- <dirCopy srcDir="bea/portal/webapps/tools" -->
<!-- <targetDir="beaApps/portalApp/tools"/> -->
<!-- <dirCopy srcDir="bea/portal/webapps/toolSupport" -->
<!-- <targetDir="beaApps/portalApp/toolSupport"/> -->
<!-- <dirCopy srcDir="bea/portal/webapps/datasync" -->
<!-- <targetDir="beaApps/portalApp/datasync"/> -->
<!-- <dirCopy srcDir="bea/portal/apps/paymentWSApp" -->
<!-- <targetDir="beaApps/paymentWSApp"/> -->
<!-- <dirCopy srcDir="bea/portal/apps/taxWSApp" -->
<!-- <targetDir="beaApps/taxWSApp"/> -->
<!-- <dirCopy srcDir="bea/portal/apps/jars" -->
<!-- <targetDir="beaApps/portalApp"/> -->
<!-- <dirCopy srcDir="bea/portal/projects/portalApp-project" -->
<!-- <targetDir="beaApps/portalApp-project"/> -->
<!-- </file-dir-customization> -->

<!-- The SERVER-RUN-AS value determines the server configuration that the
Configuration Wizard creates.-->

<data-value name="SERVER-RUN-AS" value="Managed Server (with owning Admin
Server configuration)" />
</input-fields>

</domain-template-descriptor>
```

---

## What's Next?

When you install WebLogic Platform, an evaluation license file is also installed in the BEA Home directory that you created during installation so that you can start using the product immediately. We recommend that you use the QuickStart application to familiarize yourself with the software, take the WebLogic Platform Tour, and execute the samples provided. For additional information, see [Chapter 8, "Performing Post-Installation Tasks."](#)

## Installing WebLogic Platform Using Silent-Mode Installation

# Installing and Updating WebLogic Platform License Files

Your WebLogic Platform distribution requires a valid product license to run. The following sections explain how to acquire, install, and update a WebLogic Platform license:

- [About the WebLogic Platform License](#)
- [Updating Your license.bea File](#)
- [Enabling 128-Bit Encryption](#)
- [Upgrading Licenses from Pre-7.0 Releases of WebLogic Platform Products](#)

## About the WebLogic Platform License

WebLogic Platform 7.0 uses an XML-format license called `license.bea`. This license file, stored in the BEA Home directory, is used for the BEA WebLogic Platform products installed on the target system and is checked at run time to determine which components of WebLogic Platform you can use.

For information about the licenses available for WebLogic Platform, see the Licensing page on the e-docs Web site at the following URL:

<http://e-docs.bea.com/platform/docs70/interm/license.html>

## Evaluation Licenses

The first time you install a BEA WebLogic product, the installation program installs a `license.bea` file in the BEA Home directory, and populates the file with a one-year evaluation license so that you can start using the product immediately. Subsequently, when you install additional BEA products that

contain a `license.bea` file as part of the distribution, the installation program automatically adds the new evaluation product licenses to the `license.bea` file.

The evaluation license for WebLogic Platform is a full license, enabling all of the component features of WebLogic Platform. For information about purchasing licenses, contact BEA Sales at

<http://www.bea.com>.

All WebLogic Platform evaluation products are licensed for use on a single server machine and allow up to twenty connections to the server.

## Developer and Production Licenses

You can purchase licenses for the entire WebLogic Platform product, or for individual components. For information about the licenses available for WebLogic Platform, see the Licensing page on the e-docs Web site at the following URL:

<http://e-docs.bea.com/platform/docs70/interm/license.html>

If you purchased WebLogic Platform on CD-ROM, you will receive a developer or production license for the components that you licensed via e-mail, to the account specified on the purchase order. After installing the WebLogic Platform software and receiving the product license, you must update the existing `license.bea` file with the license file you received. For instructions, see “[Updating Your license.bea File](#)” on page 5-2.

## Updating Your license.bea File

You must update your `license.bea` file if at least one of the following is true:

- You applied for and received an extension to the evaluation period of WebLogic Platform.
- You purchased additional BEA WebLogic software.
- You obtained a new distribution that includes new products.
- You possess a non-expiring license file for an earlier release of a WebLogic Platform component product, and you want to upgrade to a WebLogic Platform 7.0 license after downloading WebLogic Platform 7.0 from the BEA Web site. You must convert the license to a WebLogic Platform 7.0 license. To do so, see “[Upgrading Licenses from Pre-7.0 Releases of WebLogic Platform Products](#)” on page 5-5.
- You possess either a `WebLogicLicense.XML` file or a `WebLogicLicense.class` file, which are license files used in pre-6.0 versions (5.1 or earlier) of WebLogic Server. You must convert



these license files to a `license.bea` file. Instructions for converting these license files are provided in the *BEA WebLogic Server 7.0 Upgrade Guide* at the following URL:

<http://e-docs.bea.com/wls/docs70/upgrade/index.html>

In each case, you receive a license update file in an e-mail attachment. You then update your `license.bea` file by performing the following procedure.

**Note:** Enabling 128-bit encryption requires that the 128-bit encryption license be present in the `license.bea` file *before* you install the WebLogic Platform software. For details, see “Enabling 128-Bit Encryption” on page 5-4.

1. Save the license update file that you received through e-mail with a name other than `license.bea`, in the target BEA Home directory. For example, save the file as `platform_license.bea`. Use this file as the *license\_update\_file* in step 4 of this procedure.

**Warning:** Do not overwrite or change the name of the existing `license.bea` file.

2. Perform the step appropriate for your platform:
  - On a Windows system, open an MS-DOS command window and go to the target BEA Home directory.
  - On a UNIX system, go to the target BEA Home directory.
3. If it is not already included, add the Java 2 SDK to your `PATH` variable by entering the following commands:

- On a Windows system:

```
set PATH=BEA_HOME\SDK\bin;%PATH%
```

- On a UNIX system:

```
PATH=BEA_HOME/SDK/bin:$PATH
export PATH
```

In these commands, *SDK* is the directory name of the Java 2 SDK being used for this installation, for example, `jdk131_08` or `jrockit70sp4_131_08`.

4. Merge the license update file into your existing license by entering one of the following commands:

- On a Windows system:

```
UpdateLicense license_update_file
```

- On a UNIX system:

```
sh UpdateLicense.sh license_update_file
```

`license_update_file` is the name to which you saved the license update file in step 1.

5. Save a copy of your updated `license.bea` file in a safe place outside the WebLogic Integration and application installation directories.

Although no one else can use your license file, you should save it in a place that is protected from both malicious and innocent tampering.

## Enabling 128-Bit Encryption

Two levels of secure sockets layer (SSL) encryption are available for WebLogic Platform: 56-bit and 128-bit. An evaluation license comes only with 56-bit encryption enabled, whereas a developer or production license may be purchased with either 56-bit or 128-bit encryption enabled.

The installer program must find the 128-bit encryption license in the `license.bea` file *before* the installer enables 128-bit encryption for the WebLogic Platform installation. If the installation program does not find a 128-bit encryption license for WebLogic Platform in the `license.bea` file, or finds only a 56-bit encryption license, the installer includes 56-bit SSL plug-ins in the WebLogic Platform installation. If the installation program finds a 128-bit encryption license for WebLogic Platform in the `license.bea` file, the installer includes both 56-bit *and* 128-bit SSL plug-ins in the WebLogic Platform installation.

**Note:** If you already installed WebLogic Platform without the 128-bit encryption license and you want 128-bit encryption, you need to uninstall the software, place the 128-bit encryption license for WebLogic Platform in the BEA Home directory, and then reinstall WebLogic Platform.

When creating a new BEA Home directory for a WebLogic Platform installation intended for 128-bit encryption, proceed as follows:

1. Acquire a 128-bit encryption license for WebLogic Platform.

For details, contact BEA Sales at <http://www.bea.com>.

2. Create a new directory that you want to use as a BEA Home directory and place the 128-bit encryption license in the new directory. The license file must be named `license.bea`.
3. Install the WebLogic Platform software.

For instructions, see one of the following installation procedures:

- [Chapter 2, “Installing WebLogic Platform Using Graphical-Mode Installation”](#)
- [Chapter 3, “Installing WebLogic Platform Using Console-Mode Installation”](#)

- [Chapter 4, “Installing WebLogic Platform Using Silent-Mode Installation”](#)

## Upgrading Licenses from Pre-7.0 Releases of WebLogic Platform Products

The format of the `license.bea` file has changed in WebLogic Platform 7.0. To convert a `license.bea` file from a previous release of a WebLogic Platform component product to a WebLogic Platform 7.0 `license.bea` file, complete the following steps. Be sure the `license.bea` license file from the previous release is available on the machine on which you perform this procedure.

1. Log in to the BEA eLicense Web site at <http://elicense.bea.com>.  
**Note:** You need a BEA eLicense account to log in to this Web site. If you do *not* have a BEA eLicense account, click the Register link on the Customer Support site to register for one.
2. In the left navigation area of the Web page, click Upgrade/Downgrade and follow the instructions on the page. If the license you want to upgrade is not listed, click the Add a Missing License link. The BEA Licensing team will research the missing license for you.
3. You will receive an upgraded license file through e-mail. To update the `license.bea` file on your system, see [“Updating Your license.bea File” on page 5-2](#).

## Installing and Updating WebLogic Platform License Files

# Installing Service Packs and Rolling Patches

You can upgrade your WebLogic Platform 7.0 installation by using one of two methods: Smart Update (recommended) or the downloadable upgrade installer. The following sections describe how to upgrade your software using either method:

- [About Service Packs and Rolling Patches](#)
- [Installing Service Packs and Rolling Patches Using Smart Update](#)
- [Installing Service Packs and Rolling Patches Using a Downloadable Upgrade Installer](#)
- [Uninstalling Maintenance Upgrades Using Smart Update](#)
- [What's Next?](#)

## About Service Packs and Rolling Patches

Periodically, BEA releases a service pack or a rolling patch for WebLogic Platform. A service pack is an update to an existing release that includes solutions to known problems and other product enhancements. A service pack is not a replacement for an installation of WebLogic Platform, but a package of changes and additions for it. Between service packs, rolling patches are issued to provide bug fixes for individual components. A rolling patch does not provide product enhancements.

**Note:** Service packs and rolling patches are available for download only for registered support customers, from a password-protected Web site. To download one of these product updates, you must log in using your eSupport username and password. If you do not have an eSupport account, go to the following URL to get one:

<http://support.bea.com>

You can install service packs and rolling patches using the following methods:

- Smart Update (recommended), which allows you to retrieve code and media archives from the BEA server. Media archives can be retrieved only for components currently installed in the target BEA Home directory.

**Note:** Smart Update upgrades your Windows installation to use the Sun Java 2 SDK and your Linux installation to use the WebLogic JRockit SDK. If you want to use a different SDK, you should use a WebLogic Platform upgrade installer that is bundled with the appropriate SDK or change the SDK, as described in “Switching JVMs in WebLogic Platform” in the *WebLogic Platform Release Notes*, at the following URL:

<http://e-docs.bea.com/platform/docs70/relnotes/relnotes.html#nonbundledJVM>

- Package upgrade installer, which you can download from the BEA Customer Support Web site at <http://support.bea.com>, without downloading the entire WebLogic Platform distribution. The upgrade installation program supports graphical and console modes of installation.

Both Smart Update and the package upgrade installer create a backup file containing the media state of the current installation and information about files that were added during the upgrade. This backup file is used to restore system state if any errors occur during installation, and when you uninstall or roll back an upgrade installation. For a typical upgrade installation of WebLogic Platform (that is, all WebLogic Platform component products installed), you require a minimum of 250MB of available disk space.

## Important Notes About the Package Upgrade Installer

The following lists important notes about the package upgrade installer:

- The upgrade installer only updates files installed by the WebLogic Platform installation program.
- The package upgrade installer replaces the JVM in the current installation with the JVM that is bundled with the package upgrade installer. For example, if your current installation uses the Sun JVM and you upgrade your installation using a package upgrade installer that is bundled with the WebLogic JRockit JVM, the resulting installation will use the WebLogic JRockit JVM.
- If you are not using the JVM that was bundled with the WebLogic Platform installation **and** you have edited your scripts to reference the new JVM location, the upgrade installer will not update all of the edited scripts appropriately unless you edit the scripts to restore the original JVM values.

To avoid manual editing in the future, it is recommended that you rename the non-bundled JVM to match the directory structure of the bundled JVM, as described in “Switching JVMs in WebLogic Platform” in the *WebLogic Platform Release Notes* at the following URL:

<http://e-docs.bea.com/platform/docs70/relnotes/relnotes.html#nonbundledJVM>

- The upgrade installer does not update any user-created files, or directories created using the Configuration Wizard (`user_projects` by default).
- Temporary patches are not compatible across service packs. If you installed a temporary patch and updated your classpath to reference the patch, you may need to remove any references to the patch from your classpath.

## Important Note If You Use the Node Manager in a Clustered Environment

If you are using Node Manager to manage your servers in a clustered environment, you should back up the following directory and files on all machines that are running the Node Manager before upgrading your installations:

### **Windows:**

`WL_HOME\common\nodemanager`

`WL_HOME\server\bin\startNodeManager.cmd`

### UNIX:

```
WL_HOME/common/nodemanager  
WL_HOME/server/bin/startNodeManager.sh
```

In these pathnames, `WL_HOME` is the root directory of your WebLogic Platform installation, for example, `c:\bea\weblogic700`.

Once the upgrade installation is complete, you should restore these files.

For more information about Node Manager, see “Managing Server Availability with Node Manager” in *Creating and Configuring WebLogic Server Domains* at:

[http://e-docs.bea.com/wls/docs70/admin\\_domain/nodemgr.html](http://e-docs.bea.com/wls/docs70/admin_domain/nodemgr.html)

## Important Note About Updating WebLogic Server 7.0 GA (7.0.0.0)

If you installed the stand-alone release of WebLogic Server 7.0 GA (version 7.0.0.0) and did not upgrade to the version available with WebLogic Platform 7.0 (WebLogic Server version 7.0.0.1), you cannot use Smart Update to install service packs. Instead you can use a package upgrade installer that you can download from the BEA Customer Support Web site at <http://support.bea.com>. For instructions, see “Installing Service Packs and Rolling Patches Using a Downloadable Upgrade Installer” on page 6-8.

To see which version of WebLogic Server you have installed, open `BEA_HOME\logs\log.txt` (`BEA_HOME/logs/log.txt` on UNIX) in a text editor and look at the last entry in the log file. Each line in the log file represents an installation event for the current BEA home—an installation or an uninstallation. If the log entry indicates that the version installed is WebLogic Platform 7.0 SP0 or earlier, you cannot use Smart Update. If the log entry indicates that the version installed is WebLogic Platform 7.0.0.1 or later, you *can* use Smart Update to install Service Pack 1 (7.0.1.0) and future service packs.

## Installing Service Packs and Rolling Patches Using Smart Update

**Note:** Smart Update upgrades your Windows installation to use the Sun Java 2 SDK and your Linux installation to use the WebLogic JRockit SDK. If you want to use a different SDK, you should use a WebLogic Platform upgrade installer that is bundled with the appropriate SDK or change the SDK, as described in “Switching JVMs in WebLogic Platform” in the *WebLogic Platform Release Notes*, at the following URL:



<http://e-docs.bea.com/platform/docs70/relnotes/relnotes.html#nonbundledJVM>

You can use the Smart Update feature to check, periodically, for available software updates. When you start Smart Update, it checks the version numbers of the products installed (associated with the current BEA Home directory), and then connects to the BEA Web site to check for available service packs. The Smart Update Window includes three panes:

- **Installed Products**—The left pane of the Smart Update window which contains a tree displaying product and release information for products installed in the target BEA Home directory.
- **Upgrade Options**—The top-right pane, which lists the service packs and rolling patches, if any, that are available for the installed products.
- **Downgrade Options**—The bottom-right pane, which lists the versions of the product to which you can revert your installation, if applicable. For details about uninstalling maintenance upgrades with Smart Update, see “[Uninstalling Maintenance Upgrades Using Smart Update](#)” on [page 6-16](#)

**Note:** Smart Update checks for only those products that are associated with the current BEA Home directory. If you have multiple BEA Home directories on your system, you must run Smart Update once for each directory, to make sure that available service packs are installed for each one. For more information about BEA Home directories, see “[Choosing a BEA Home Directory](#)” on [page 1-15](#).

To install service packs or rolling patches using Smart Update, perform the following steps:

1. Shut down any servers that are running. *Hot installation* of a service pack or rolling patch is not supported.
2. Start Smart Update as described in the following table.

Table 6-1 Starting Smart Update

To start Smart Update on this platform . . .	Perform the following steps . . .
Windows	<p>From the Start Menu:</p> <ul style="list-style-type: none"><li>Choose Start→Programs→BEA WebLogic Platform 7.0→Smart Update</li></ul> <p>From an MS-DOS command prompt window:</p> <ol style="list-style-type: none"><li>Go to the <i>BEA_HOME\utils</i> directory, where <i>BEA_HOME</i> is the directory containing the installation of WebLogic Platform that you want to update.</li><li>Enter the following command at the prompt: <code>bsu.cmd</code> The Smart Update window is displayed.</li></ol>
UNIX	<ol style="list-style-type: none"><li>Log in to the UNIX system.</li><li>Open a command shell and change to the <i>BEA_HOME/utils</i> directory, where <i>BEA_HOME</i> is the directory containing the installation of WebLogic Platform that you want to update.</li><li>Enter the following command: <code>bsu.sh</code> The Smart Update window is displayed.</li></ol>

**Note:** To run Smart Update on a UNIX system, the console attached to the machine on which you are upgrading the software must support a Java-based GUI.

- In the Installed Products pane of the Smart Update window, select the release for the product you want to update.

If any service packs or rolling patches are available, they are displayed in the Upgrade Options section of the window.

- In the Upgrade Options pane, select the service pack or rolling patch to be installed and click OK.

The Enter eSupport Identification dialog box is displayed.

- Enter a valid eSupport username and password and click Verify.

**Note:** You must have a valid eSupport account to install a service pack or rolling patch using Smart Update. If you do not have one, you can register for an account at <http://support.bea.com>.

The BEA Installation Program Welcome window is displayed.

6. Click Next to proceed with the installation. You may cancel the installation at any time by clicking Exit.

The Downloading Archive Information window is displayed briefly, followed by the Specify Download Options window.

7. Indicate your preferences for downloading the software as follows:
  - Specify a storage directory to which you want to download the software upgrade source files.
  - Indicate whether you want to delete the downloaded files after the installation is complete by selecting the appropriate check box. If you do not select this check box, the downloaded files are saved in the storage directory you specified.
  - Indicate whether you want to use an HTTP Proxy server for the download by selecting the appropriate check box. To use an HTTP Proxy server, you must provide the following information:

Host—enter the name or IP address of the proxy server

Port—enter the port number of the proxy server

8. Click Next.

The Archive Download window is displayed.

9. Indicate whether you want to proceed with the installation, automatically, after the download is complete by selecting or clearing the appropriate check box. This check box is selected by default. If you clear it, you need to click Next when the download is complete to proceed with the installation.

Click Pause if you need to interrupt the download for any reason. If you do so, the download is discontinued and the Pause button is replaced by a Resume button. Click Resume when you want to proceed with the download.

When the download is complete, the Archive Integrity Check window is displayed while it verifies the integrity of the upgrade archive files you downloaded.

When the archive verification is complete, the Confirm Product Directory window is displayed, which contains the path to the BEA home directory and to the product directory in which the WebLogic Platform software will be updated.

10. Click Next to proceed with the upgrade installation.

A status window displays the progress of the installation. When the installation is finished, the Installation Complete window is displayed.

11. Click Done on the Installation Complete window.

The Smart Update window is displayed, indicating the upgraded release level in the Installed Products pane. Choose File→Exit to close the Smart Update window.

## Installing Service Packs and Rolling Patches Using a Downloadable Upgrade Installer

When a maintenance release is available, you can download a package upgrade installer from the BEA Customer Support Web site at <http://support.bea.com>.

**Note:** Service packs and rolling patches are available for download only for registered support customers, from a password-protected Web site. To download one of these product updates, you must log in using your eSupport username and password. If you do not have an eSupport account, you can register for one on the BEA Customer Support Web site.

This upgrade installer consists of the update files for all the WebLogic Platform components. However, it upgrades only those components that are already installed on your system. For example, if your installation consists of the WebLogic Server and WebLogic Integration components of WebLogic Platform 7.0, the upgrade installer upgrades only those two components. You cannot use the upgrade installer to install additional components, such as WebLogic Portal. To install additional components, you must use either the net or package installer, as described in “[WebLogic Platform Distribution Methods](#)” on page 1-7.

The upgrade installer can be run in the following modes on both UNIX and Windows platforms:

- Graphical mode. For instructions, see “[Using the Upgrade Installer in Graphical Mode](#)” on page 6-9.
- Console mode. For instructions, see “[Using the Upgrade Installer in Console Mode](#)” on page 6-12.

**Notes:** To run graphical-mode installation, your console must support a Java-based GUI. If the installation program determines that your system cannot support a Java-based GUI, it automatically starts running in console-mode.

The upgrade installer does not support silent-mode installation.

The WebLogic Platform upgrade installation program requires a Java run-time environment (JRE) to run. A Java 2 Software Development Kit (SDK), which includes a JRE, is bundled in the Windows installation program, and in some UNIX installation programs (those with filenames ending in `.bin`). For other UNIX platforms, the WebLogic Platform installation program does not include the Java 2 SDK. Filenames for these installation programs end in `.jar`. To run the `.jar` installation programs, you must have the appropriate version of the Java 2 SDK installed on your system, and include the `bin`

directory of the SDK at the front of the `PATH` variable. It is important that you use an SDK because the installation process sets the `JAVA_HOME` and related variables to point to this directory.

## Using the Upgrade Installer in Graphical Mode

To complete the upgrade installation in graphical mode on UNIX and Windows systems, perform the following steps:

1. Download the upgrade installer specific to your platform from the BEA Customer Support Web site at <http://support.bea.com>.  
**Note:** To download updates, you will need to log in using your eSupport username and password. If you do not have an eSupport account, you can register for one on the BEA Customer Support Web site.
2. Shut down any servers that are running. *Hot installation* of a service pack or rolling patch is not supported.
3. Start the upgrade installer as described in the following table.

**Table 6-2 Starting the Upgrade Installer in Graphical Mode**

To start the upgrade installer on this platform . . .	Perform the following steps . . .
Windows	<ol style="list-style-type: none"><li data-bbox="327 491 1173 638">1. Go to the directory in which you downloaded the installation program and double-click <i>filename.exe</i>, where <i>filename.exe</i> is the name of the installation file you downloaded from the BEA Customer Support Web site, for example, <i>platformXXX_upgrade_win32.exe</i>. In this filename, <i>XXX</i> is the version number of the software you are installing.  The installation program begins to install the upgrade.</li><li data-bbox="327 685 529 711">2. Proceed to step 4.</li></ol>

**Table 6-2 Starting the Upgrade Installer in Graphical Mode (Continued)**

To start the upgrade installer on this platform . . .	Perform the following steps . . .
UNIX	<p data-bbox="377 447 834 482"><b>For installers with filenames ending in .bin :</b></p> <ol data-bbox="377 487 1252 829" style="list-style-type: none"> <li data-bbox="377 487 1252 829">1. Go to the directory in which you downloaded the installation program, and invoke the installation procedure by entering the following commands:  <pre data-bbox="417 557 736 621">chmod a+x filename.bin ./filename.bin</pre> <p data-bbox="417 626 1252 748">where <i>filename.bin</i> is the name of the upgrade installation program you downloaded from the BEA Customer Support Web site, for example <i>platformXXX_upgrade_solaris.bin</i>. In this filename, <i>XXX</i> is the version number of the software you are installing.</p> <p data-bbox="417 753 928 788">The installation program begins to install the upgrade.</p> </li> <li data-bbox="377 793 592 829">2. Proceed to step 4.</li> </ol> <hr data-bbox="377 835 1252 838"/> <p data-bbox="377 843 834 878"><b>For installers with filenames ending in .jar :</b></p> <ol data-bbox="377 883 1252 1362" style="list-style-type: none"> <li data-bbox="377 883 1252 1362">1. Include the <code>bin</code> directory of the appropriate Java 2 SDK at the beginning of the <code>PATH</code> variable definition on the target system. For example:  <pre data-bbox="417 953 763 1008">PATH=JAVA_HOME/bin:\$PATH export PATH</pre> <p data-bbox="417 1013 1016 1048">where <i>JAVA_HOME</i> is the full path of the Java 2 SDK directory.</p> </li> <li data-bbox="377 1053 1252 1362">2. Go to the directory in which you downloaded the installation file and invoke the installation procedure by entering the following command:  <pre data-bbox="417 1123 736 1150">java -jar filename.jar</pre> <p data-bbox="417 1156 1252 1277">where <i>filename.jar</i> is the name of the upgrade installation program you downloaded from the BEA Customer Support Web site, for example <i>pj_platformXXX_upgrade_generic.jar</i>. In this filename, <i>XXX</i> is the version number of the software you are installing.</p> <p data-bbox="417 1282 928 1317">The installation program begins to install the upgrade.</p> </li> <li data-bbox="377 1322 592 1362">3. Proceed to step 4.</li> </ol>

4. Review the text in the Welcome window and click Next.

The Choose BEA Home Directory window is displayed.

5. Select the BEA Home directory containing the release of WebLogic Platform you want to upgrade, and click Next.

The Confirm Product Directory window is displayed, which contains the path to the BEA home directory and to the product directory in which the WebLogic Platform software will be updated.

6. Click Next.

A progress window is displayed during the upgrade installation. When the installation is finished, the Installation Complete window is displayed.

7. Click Done on the Installation Complete window to exit the installation program.

## Using the Upgrade Installer in Console Mode

To complete the upgrade installation in console mode on UNIX and Windows systems, perform the following steps:

**Note:** In this section, the UNIX delimiter, a slash (/), is used in pathnames, such as `/home1/bea/weblogic700`. When entering pathnames on a Windows system, remember to replace such slashes with backslashes (\), the Windows delimiter for pathnames. Thus, for example, instead of `/home1/bea/weblogic700`, on a Windows system you would enter `C:\bea\weblogic700`.

1. Download the upgrade installer specific to your platform from the BEA Customer Support Web site at <http://support.bea.com>.

**Note:** To download updates, you will need to log in using your eSupport username and password. If you do not have an eSupport account, you can register for one on the BEA Customer Support Web site.

2. Shut down any servers that are running. *Hot installation* of a service pack or rolling patch is not supported.
3. Start the upgrade installer as described in the following table.



**Table 6-3 Starting the Upgrade Installer in Console Mode**

<b>To start the upgrade installer on this platform . . .</b>	<b>Perform the following steps . . .</b>
Windows	<ol style="list-style-type: none"><li data-bbox="435 487 884 517">1. Open an MS-DOS command prompt window.</li><li data-bbox="435 526 1260 748">2. Go to the directory in which you downloaded the installation program, and invoke the installation procedure by entering the following command:  <code>filename.exe -mode=console</code> where <i>filename.exe</i> is the name of the upgrade installer you downloaded from the BEA Customer Support Web site, for example <code>platformXXX_upgrade_win32.exe</code>. In this filename, <i>XXX</i> is the version number of the software you are installing.  The upgrade installer begins to install the WebLogic Platform maintenance release.</li><li data-bbox="435 791 642 821">3. Proceed to step 4.</li></ol>

Table 6-3 Starting the Upgrade Installer in Console Mode (Continued)

To start the upgrade installer on this platform . . .	Perform the following steps . . .
UNIX	<p><b>For installers with filenames ending in .bin:</b></p> <ol style="list-style-type: none"><li>Go to the directory in which you downloaded the installation program and invoke the installation procedure by entering the following commands: <pre>chmod a+x filename.bin ./filename.bin -mode=console</pre>where <i>filename.bin</i> is the name of the upgrade installer you downloaded from the BEA Customer Support Web site, for example <i>platformXXX_upgrade_solaris.bin</i>. In this filename, <i>XXX</i> is the version number of the software you are installing. The installation program begins to install the upgrade.</li><li>Proceed to step 4.</li></ol> <hr/> <p><b>For installers with filenames ending in .jar:</b></p> <ol style="list-style-type: none"><li>Include the <i>bin</i> directory of the appropriate Java 2 SDK at the beginning of the <i>PATH</i> variable definition on the target system. For example: <pre>PATH=JAVA_HOME/bin:\$PATH export PATH</pre>where <i>JAVA_HOME</i> is the full path to the Java 2 SDK directory.</li><li>Go to the directory in which you downloaded the installation file and invoke the installation procedure by entering the following command: <pre>java -jar filename.jar -mode=console</pre>where <i>filename.jar</i> is the name of the upgrade installer you downloaded from the BEA Customer Support Web site, for example <i>pj_platformXXX_upgrade_generic.jar</i>. In this filename, <i>XXX</i> is the version number of the software you are installing. The installation program begins to install the upgrade.</li><li>Proceed to step 4.</li></ol>

**Note:** To create a verbose log file during installation, specify a pathname for it with the `-log=full_path_to_log_file` option in the command line.

For example:

```
platformXXX_upgrade_solaris.bin -mode=console
-log=/home/bea/logs/platform_install.log
```

The path must specify a file. You cannot create a folder simply by including a name for it in a pathname; your path should specify only existing folders. If your path includes a nonexistent folder when you execute the command, the installation program does not create the log file. In the filename used in this example, *xxx* is the version number of the software you are installing.

4. At the Welcome prompt, type *next* or press Enter to continue with the installation process.

The Choose BEA Home directory prompt is displayed.

5. Select the BEA Home directory associated with the particular installation of WebLogic Platform that you want to update. If you have only one installation of WebLogic Platform on the current machine, only one BEA Home directory is listed. For details about the BEA Home directory, see [“Choosing a BEA Home Directory” on page 1-15](#).

The installation program displays the following prompt:

```
Choose BEA Home Directory:
```

```
->1| /home/bea
    2| /home1/beahome2
```

```
Enter index number to select OR [Exit] [Previous] [Next]>
```

Press Enter to use the selected BEA Home directory or type the number of the BEA Home directory that you want to select.

Whether you accept the selected BEA Home directory or specify a different BEA Home directory, you are prompted to confirm your selection, as shown in the following sample:

```
Choose BEA Home Directory:
```

```
->1| Yes, Use this BEA home directory [/home/bea]
    2| No, return to BEA home directory selection
```

```
Enter index number to select OR [Exit] [Previous] [Next]>
```

Type 1 or press Enter to accept your selection. Otherwise, type 2 to return to the Choose BEA Home Directory panel where you can modify your entry.

After you select the appropriate BEA Home directory and confirm your selection, the Confirm Product Directory panel is displayed.

6. The Confirm Product Directory panel indicates the folder in which the WebLogic Platform software will be updated. For example:

```
Confirm Product Directory:
```

```
Product Installation Directory: [home/bea/weblogic700]
```

```
Files in /home/bea/weblogic700 will now be upgraded to the 7.0.2.0  
maintenance level.
```

```
Enter [Exit] [Previous] [Next] >
```

Press Enter or type next to continue. The following text is displayed:

7. After you confirm the product directory, the installation program makes a backup copy of specific files from the previous installation and then installs new versions of those files.

When the installation is complete, the following prompt is displayed:

```
Install Complete
```

```
Congratulations! WebLogic Platform 7.0.2.0  
has been successfully installed to  
/home/bea/weblogic700
```

```
Press any key to continue OR [Exit] >
```

8. Press any key to exit the installation program.

## Uninstalling Maintenance Upgrades Using Smart Update

At times you may want to uninstall a maintenance upgrade. You can use Smart Update to revert your system installation to an earlier version of the release as follows:

- You can revert to the prior service pack installation on your system. For example, if you first install WebLogic Platform 7.0, and then install Service Pack 1 (SP1), you can later revert to WebLogic Platform 7.0. Similarly, if you have WebLogic Platform 7.0 SP1 installed on your system and you upgrade to WebLogic Platform 7.0 SP2, you can revert only to WebLogic Platform 7.0 SP1; you cannot revert to WebLogic Platform 7.0.
- You can revert a rolling patch upgrade to the prior service pack on which the rolling patch is based. (Rolling patches are cumulative: each rolling patch replaces all earlier rolling patches on a particular service pack base.) For example, if you first install WebLogic Platform 7.0 SP2, and then install rolling patches 1 and 2 (RP1 and RP2), you can later revert to WebLogic Platform 7.0 SP2. You cannot revert to an earlier rolling patch, however.

**Note:** If you modify an upgraded installation by installing or uninstalling any WebLogic Platform components, you cannot roll back to any previous versions of the product.

You can also uninstall a service pack or rolling patch using the standard uninstallation process. For details, see [Chapter 7, “Uninstalling WebLogic Platform.”](#)

To uninstall a service pack or rolling patch using Smart Update, follow these instructions:

1. Start Smart Update as described in [Table 6-1, “Starting Smart Update,” on page 6-6](#).
2. In the left pane, select the release for the product you want to roll back.  
Service packs and rolling patches that you can uninstall (or roll back) are displayed in the Downgrade Options section of the window.
3. In the Downgrade Options pane, select the service pack or rolling patch that you want to uninstall and click OK.  
The BEA Uninstaller Program opens and the Welcome window is displayed.
4. Click Next to proceed.  
A status window displays the progress of the uninstall process. A message is displayed when the rollback or uninstallation is complete.
5. Click Done on the status window.  
The Smart Update window is displayed. Choose File→Exit to close the Smart Update window.

## What's Next?

After you upgrade your WebLogic Platform 7.0 installation, you may need to upgrade your user domains. If you created user domains using the Configuration Wizard and templates available with WebLogic Platform 7.0 GA or an earlier 7.0 service pack, you need to update the domains for use the latest 7.0 service pack. Upgrade procedures are provided in “Migrating Domains Created Using the Configuration Wizard” in the *BEA WebLogic Platform 7.0 Release Notes*, at the following URL:

<http://e-docs.bea.com/platform/docs70/relnotes/relnotes.html#migration>

## Installing Service Packs and Rolling Patches

# Uninstalling WebLogic Platform

The following sections provide platform-specific procedures for uninstalling WebLogic Platform:

- [About the Uninstallation Program](#)
- [Uninstalling WebLogic Platform in Graphical Mode](#)
- [Uninstalling WebLogic Platform in Console Mode](#)
- [Uninstalling WebLogic Platform in Silent Mode](#)
- [Reinstalling WebLogic Platform](#)

## About the Uninstallation Program

The following sections describe how to uninstall WebLogic Platform on Windows and UNIX systems. You can uninstall WebLogic Platform using graphical mode, console mode, or silent mode. To run the graphical mode uninstallation program, your console must support a Java-based GUI. If the uninstallation program determines that your system cannot support a Java-based GUI, it automatically starts running in console mode.

You can uninstall individual components of WebLogic Platform, or the entire installation. Uninstalling WebLogic Platform does not remove the BEA Home directory associated with the installation, the JVM, or any user-created domains. Only the components that were installed by the installation program can be removed. If you choose to uninstall the entire WebLogic Platform installation, the uninstallation program also removes the WebLogic Platform product directory associated with the installation *unless* one of the following is true:

- The product directory contains customer-created configuration or application files—*the uninstallation program does not delete customer-created configuration or application files or domains*.
- The complete installation was not uninstalled. If an individual component is uninstalled, only the installation directory for that component is removed; the installation directories for other components are unaffected.
- The uninstall was invoked from within the product directory structure—specifically, within the `uninstaller` directory.

## Uninstalling Service Packs and Rolling Patches

If you have installed a service pack or rolling patch, you can revert your system installation to an earlier version of the release as follows:

- You can revert to the prior service pack installation on your system. For example, if you first install WebLogic Platform 7.0, and then install Service Pack 1 (SP1), you can later revert to WebLogic Platform 7.0. Similarly, if you have WebLogic Platform 7.0 SP1 installed on your system and you upgrade to WebLogic Platform 7.0 SP2, you can revert only to WebLogic Platform 7.0 SP1; you cannot revert to WebLogic Platform 7.0.
- You can revert a rolling patch upgrade to the prior service pack on which the rolling patch is based. (Rolling patches are cumulative: each rolling patch replaces all earlier rolling patches on a particular service pack base.) For example, if you first install WebLogic Platform 7.0 SP2, and then install rolling patches 1 and 2 (RP1 and RP2), you can later revert to WebLogic Platform 7.0 SP2. You cannot revert to an earlier rolling patch, however.

**Note:** If you install additional WebLogic Platform components after installing a service pack or rolling patch, you cannot roll back to any previous versions of the product.

To revert to a previously installed version of WebLogic Platform, you can use the uninstallation program or Smart Update. See [“Uninstalling Maintenance Upgrades Using Smart Update” on page 6-16](#) for instructions on using Smart Update to roll back to a previous installation.

## Uninstalling WebLogic Platform in Graphical Mode

Use the following procedure to uninstall WebLogic Platform or individual components in graphical mode:

1. Shut down any servers that are running. If any of these servers is configured as a Windows service, you should stop the service(s) before uninstalling the software.



2. Start the uninstallation program as described in [Table 7-1](#).

**Table 7-1 Starting the Uninstallation Program in Graphical Mode**

To start the uninstallation program on this platform . . .	Perform the following steps . . .
Windows	<ol style="list-style-type: none"> <li>1. From the Windows Start menu, choose Start→Programs→BEA WebLogic Platform 7.0→Uninstall WebLogic Platform 7.0.  The WebLogic Platform Uninstaller Welcome window is displayed.</li> <li>2. Proceed to step 3.</li> </ol>
UNIX	<ol style="list-style-type: none"> <li>1. Open a command shell and go to the following directory: <i>WL_HOME</i>/uninstall where <i>WL_HOME</i> represents the directory in which you installed WebLogic Platform.</li> <li>2. Enter <code>uninstall.sh</code> at the prompt.  The WebLogic Platform Uninstaller Welcome window is displayed.</li> </ol> <p><b>Note:</b> If your system supports a graphical user interface, the uninstallation program starts in graphical mode. If your system does not support a graphical user interface, the uninstallation program starts in console mode. If console mode is started, see <a href="#">“Uninstalling WebLogic Platform in Console Mode”</a> on page 7-4 for instructions.</p>

3. Click Next to start the uninstall program.

One of the following windows is displayed:

- The Choose Components window—go to step 4.
- The Select Uninstall Type window—If you have installed a service pack or rolling patch, you can roll back your system installation to the previous service pack. To uninstall WebLogic Platform, select Uninstall WebLogic Platform and continue to the next step. If you want to uninstall a service pack or rolling patch, see [“Uninstalling a Service Pack or Rolling Patch in Graphical Mode.”](#)

- 4. Select the components to uninstall by selecting or clearing the appropriate check boxes. Then click Next. By default, all installed components are selected, indicating that they will be removed.
- 5. Click Done in the Uninstalling WebLogic Platform 7.0 window to exit the uninstallation program.

## Uninstalling WebLogic Platform in Console Mode

Use the following procedure to uninstall WebLogic Platform or individual components using the command line interface:

- 1. Shut down any servers that are running. If any of these servers is configured as a Windows service, you should stop the service(s) before uninstalling the software.
- 2. Start the uninstallation program as described in [Table 7-2](#).

**Table 7-2 Starting the Uninstallation Program in Console Mode**

To start the uninstallation program on this platform . . .	Perform the following steps . . .
Windows	<div>1. Open an MS-DOS command prompt window and go to the following directory: <code>WL_HOME\uninstall</code> where <code>WL_HOME</code> represents the directory in which you installed WebLogic Platform, typically <code>C:\bea\weblogic700</code>.</div> <div>2. Enter the following command at the prompt: <code>uninstall -mode=console</code> The Welcome text is displayed.</div>
UNIX	<div>1. Open a command shell and go to the following directory: <code>WL_HOME/uninstall</code> where <code>WL_HOME</code> represents the directory in which you installed WebLogic Platform.</div> <div>2. At the prompt, enter the following command: <code>sh uninstall.sh -mode=console</code> The Welcome text is displayed.</div>

3. Press Enter or type `next` to proceed to the next panel of the uninstallation program.

One of the following panels is displayed:

- The Choose Components panel—go to step 4.
  - The Uninstall Options panel—If you have installed a service pack or rolling patch, you can roll back your system installation to the previous service pack. To uninstall WebLogic Platform, type `1` at the prompt and press Enter, then continue to the next step. If you want to uninstall a service pack or rolling patch, see [“Uninstalling a Service Pack or Rolling Patch in Console Mode” on page 7-8](#).
4. Select the components you want to uninstall. The available components are displayed as follows:

Choose Components:

```
Release 7.0.X.0
|----WebLogic Server  [0] v
|  +----Server  [0.0] v
|  +----Workshop  [0.1] v
|  +----Server Examples  [0.2] v
|----WebLogic Integration  [1] v
|  +----Integration Server  [1.0] v
|  +----Integration Examples  [1.1] v
|  +----Client only  [1.2] v
|----WebLogic Portal  [2] v
|  +----Portal Server  [2.0] v
|  +----Portal Examples  [2.1] v
|  +----EBCC  [2.2] v
|----Platform Samples and Utilities  [3] v
|  +-----QuickStart  [3.0] v
|  +-----Platform Tour  [3.1] v
```

Enter number exactly as it appears in brackets to toggle selection OR `[Exit] [Previous] [Next]> next`

By default, all installed components are selected, indicating that they will be removed.

To leave a component installed on your system, type the numeric code for that component on the command line, exactly as it appears within the brackets. Dependency checking is performed to ensure that you do not uninstall a component that is required by another component. For example, to keep WebLogic Server and WebLogic Workshop installed on your system, enter `0` on the command line. The check mark (Windows systems) or `x` (UNIX systems) beside the entries for WebLogic Server, Server, Workshop, and Server Examples are cleared, indicating that those components will *not* be uninstalled. The remaining components, WebLogic Integration and WebLogic Portal, are selected, indicating they will be uninstalled.

5. Press `Enter` or type `next`.

You are prompted to confirm your selections, as shown in the following text:

Choose Components:

```
->1| Yes, uninstall these component selections
    2| No, return to component selection
```

Enter index number to select OR [Exit] [Previous] [Next] >

6. Press `Enter` or type `next` to proceed with the uninstallation process.
7. When the uninstallation process is complete, press `Enter` or type `done` to complete the uninstallation and exit the uninstallation program.

## Uninstalling WebLogic Platform in Silent Mode

When you uninstall WebLogic Platform in silent mode, the full installation of WebLogic Platform is uninstalled. You cannot use silent-mode uninstallation to roll back to a previous service pack or to uninstall individual WebLogic Platform components.

When you run the uninstallation program in silent mode, it leaves behind the same files and directories as when you run the uninstallation program in GUI and console modes, including:

- The BEA Home directory, including the `logs` and `utils` subdirectories
- The Java 2 SDK, if it was installed with WebLogic Platform
- Domain directories, including those in `user_projects`
- Any other file created or modified since WebLogic Platform was installed

You can manually delete these files.

Although you can use silent-mode uninstallation to manually uninstall WebLogic Platform, silent-mode uninstall is intended for use in scripts. You can adapt the steps in [Table 7-3](#) for use in scripts.

Use the following procedure to uninstall WebLogic Platform using the command line interface:

1. Shut down any servers that are running. If you configured any of the servers as a Windows service, you must stop the service(s) before uninstalling the software.
2. Start the uninstallation program as described in the [Table 7-3](#).

**Table 7-3 Starting the Uninstallation Program in Silent Mode**

To start the uninstallation program on this platform . . .	Perform the following steps . . .
Windows	<ol style="list-style-type: none"> <li>1. Open an MS-DOS command prompt window and go to the following directory:  <code>WL_HOME\uninstall</code>            where <i>WL_HOME</i> represents the directory in which you installed WebLogic Platform, typically  <code>C:\bea\weblogic700</code>.</li> <li>2. Enter the following command at the prompt:  <code>uninstall -mode=silent</code></li> </ol>
UNIX	<ol style="list-style-type: none"> <li>1. Open a command shell and go to the following directory:  <code>WL_HOME/uninstall</code>            where <i>WL_HOME</i> represents the directory in which you installed WebLogic Platform.</li> <li>2. At the prompt, enter the following command:  <code>sh uninstall.sh -mode=silent</code></li> </ol>

**Notes:** When you run the uninstallation program in silent mode, no messages are displayed indicating the uninstallation is in progress or has completed successfully, even if errors are encountered.

To create a verbose log file during silent uninstallation, include the `-log=full_path_to_log_file` option in the command line. For example:

```
uninstall -mode=silent -log=D:\logs\weblogic_uninstall.log
```

The path must specify a file. You cannot create a folder simply by including a name for it in a pathname; your path should specify only existing folders. If your path includes a nonexistent folder when you execute the command, the installation program does not create the log file.

## Uninstalling a Service Pack or Rolling Patch in Graphical Mode

Use the following procedure to uninstall a WebLogic Platform service pack or rolling patch. You can also use Smart Update to uninstall a service pack or rolling patch. See [“Uninstalling Maintenance Upgrades Using Smart Update” on page 6-16](#).

1. Shut down any servers that are running. If any of these servers is configured as a Windows service, you should stop the service(s) before uninstalling the software.
2. Start the uninstallation program as described in the [Table 7-1, “Starting the Uninstallation Program in Graphical Mode,” on page 7-3](#).

The WebLogic Platform Uninstaller Welcome window is displayed.

3. Click Next to start the uninstall program.

The Select Uninstall Type window is displayed.

4. Select the service pack to which you want to roll back your system installation, and click Next.

A status window displays the progress of the uninstallation. A message is displayed when the rollback is complete.

5. Click Done in the status window.

## Uninstalling a Service Pack or Rolling Patch in Console Mode

Use the following procedure to uninstall a WebLogic Platform service pack or rolling patch. You can also use Smart Update to uninstall a service pack or rolling patch. See [“Uninstalling Maintenance Upgrades Using Smart Update” on page 6-16](#).

1. Shut down any servers that are running. If any of these servers is configured as a Windows service, you should stop the service(s) before uninstalling the software.
2. Start the uninstallation program as described in [Table 7-2, “Starting the Uninstallation Program in Console Mode,” on page 7-4](#).

The Welcome text is displayed.

3. Press Enter or type `next` to proceed to the next panel of the uninstallation program.

The Uninstall Options panel is displayed:

4. At the prompt, type the number of the option for the service pack to which you want to roll back your system installation, and press Enter.

Text messages indicate the progress of the uninstallation.

## Reinstalling WebLogic Platform

You cannot reinstall the same version of WebLogic Platform or any of its components over a previous WebLogic Platform installation of the same components—in the same BEA Home directory or in the

same file location. You can, however, add components to an existing installation. For example, you can install WebLogic Server during one installation, and WebLogic Integration or WebLogic Portal during separate installations.

To reinstall the same version of one of the product components or the entire WebLogic Platform distribution in the same location, you must first uninstall the previous installation.

If you attempt to install a copy of WebLogic Platform 7.0 in the same BEA Home directory as a previous installation of WebLogic Platform 7.0, the installation program displays the following message:

```
A complete installation of WebLogic Platform 7.0 exists in this BEA
Home. Please select another BEA Home or uninstall the product.
```

Click or type **OK** to return to the Choose BEA Home directory prompt.

Choose one of the following options:

- To continue installing the software using a different BEA Home directory, select an existing BEA Home directory that does not contain a WebLogic Platform installation or create a new BEA Home directory.
- Exit the installation program. If you want to reinstall WebLogic Platform 7.0 in the same BEA Home, you must uninstall the previous installation. You can invoke the uninstall program appropriate for your platform, as described in one of the following sections:
  - [“Uninstalling WebLogic Platform in Graphical Mode” on page 7-2](#)
  - [“Uninstalling WebLogic Platform in Console Mode” on page 7-4](#)

Then reinstall the software as described in one of the following sections:

- [Chapter 2, “Installing WebLogic Platform Using Graphical-Mode Installation”](#)
- [Chapter 3, “Installing WebLogic Platform Using Console-Mode Installation”](#)
- [Chapter 4, “Installing WebLogic Platform Using Silent-Mode Installation”](#)

# Uninstalling WebLogic Platform



# Performing Post-Installation Tasks

The following sections describe the tasks you perform after installing and licensing your WebLogic Platform software:

- [Using QuickStart](#)
- [Executing the Samples](#)
- [Switching to Other Databases](#)
- [Determining the SDK Version You Are Using](#)
- [Understanding the WebLogic Platform Windows Shortcuts](#)
- [Understanding the WebLogic Platform Product Directory Structure](#)

## Using QuickStart

If you installed WebLogic Platform using a typical installation, or used a custom installation to install all of the components and examples, the sample domains are automatically configured to run using the PointBase database, a database that is installed with WebLogic Server. When the installation is complete, a QuickStart application is displayed. QuickStart is designed to assist first-time users in evaluating, learning, and using WebLogic Platform. It also provides quick access to the WebLogic Platform tour and other samples, useful tools for accomplishing specific development tasks, and the online documentation.

After installation, you can launch QuickStart as follows:

- On Window systems, choose Start→Programs→BEA WebLogic Platform 7.0→QuickStart

- On UNIX systems, perform the following steps:
  - a. Log in to the target UNIX system.
  - b. Open a command-line shell.
  - c. Go to the `/common/bin` subdirectory of the WebLogic Platform installation. For example:  

```
cd /home/bea/weblogic700/common/bin
```
  - d. Enter the following command:  

```
sh quickstart.sh
```

## Executing the Samples

Before using the WebLogic Platform software, we recommend that you execute the sample applications provided with each component. These samples offer a variety of benefits. They verify that the software is installed correctly, they provide sample code, and they demonstrate implementation techniques. For details about the examples for the WebLogic Platform components, refer to the following table.

**Table 8-1 Samples Descriptions**

Product	Samples Descriptions
WebLogic Platform	<a href="http://e-docs.bea.com/platform/docs70/interm/samples.html">http://e-docs.bea.com/platform/docs70/interm/samples.html</a>
WebLogic Server	<a href="http://e-docs.bea.com/wls/docs70/samples.html">http://e-docs.bea.com/wls/docs70/samples.html</a>
WebLogic Integration	<a href="http://e-docs.bea.com/wli/docs70/interm/samples.htm">http://e-docs.bea.com/wli/docs70/interm/samples.htm</a>
WebLogic Portal	<a href="http://e-docs.bea.com/wlp/docs70/interm/samples.htm">http://e-docs.bea.com/wlp/docs70/interm/samples.htm</a>
WebLogic Workshop	<a href="http://e-docs.bea.com/workshop/docs70/help/index.html#guide/tutorial/tutFirstWebServiceIntro.html">http://e-docs.bea.com/workshop/docs70/help/index.html#guide/tutorial/tutFirstWebServiceIntro.html</a>

## Switching to Other Databases

When you install WebLogic Platform, all domains are preconfigured to use the PointBase database. However, you may want to switch to another supported database, such as Oracle or Microsoft SQL Server. To successfully run the examples using a database other than PointBase, you need to configure and initialize the new database. For details about switching or configuring the databases, refer to the following:

- For WebLogic Platform domains, follow the procedures described in “Customizing a Domain for a Database” in the *BEA WebLogic Platform Release Notes* at the following URL:  
<http://e-docs.bea.com/platform/docs70/relnotes/relnotes.html>
- For WebLogic Portal domains, follow the procedures described in “Database Administration” in “System Administration” in the *BEA WebLogic Portal Administration Guide* at the following URL:  
<http://e-docs.bea.com/wlp/docs70/admin/sysadmin.htm>
- For WebLogic Integration domains, use the Integration Database Wizard, or the `wliconfig` command, as described in “Customizing WebLogic Integration” in *Starting, Stopping, and Customizing BEA WebLogic Integration* at the following URL:  
<http://e-docs.bea.com/wli/docs70/config/custom.htm>

## Determining the SDK Version You Are Using

You can determine the version of the SDK you are using in either of two ways: on the command line or by examining the contents of the log file created for the server. Instructions for both methods are provided in [Table 8-2, “Determining the SDK Version,” on page 8-4](#).

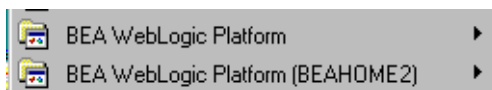
Table 8-2 Determining the SDK Version

To determine the SDK . . .	Perform the following steps . . .
From the command line	<div>1. Open a command prompt window and go to the following directory: <code>WL_HOME\server\bin</code> (Windows) <code>WL_HOME/server/bin</code> (UNIX) In these pathnames, <code>WL_HOME</code> represents the directory in which you installed WebLogic Platform.</div> <div>2. Make sure that your environment is set by entering the following command at the prompt: <code>setWLSenv.cmd</code> (Windows) <code>setWLSenv.sh</code> (UNIX)</div> <div>3. Enter the following command at the prompt: <code>java -version</code> If you are using WebLogic JRockit, BEA WebLogic JRockit(R) Virtual Machine is displayed in the output.</div>
Using the server log file	<div>1. In a text editor, open the server log file for your domain. The location of the server log file may vary. For some domains, the log file is called <code>weblogic.log</code> and is located in the <code>domain_name\logs</code> directory, where <code>domain_name</code> is one of the following: the name of the domain you provided when you created the domain using the Configuration Wizard, or, the name of a sample domain. For example, <code>C:\bea\user_projects\mydomain\logs\weblogic.log</code>. For details about server log files, see “Using Log Messages to Manage WebLogic Server” in the <i>BEA WebLogic Server Administration Guide</i> at the following URL: <a href="http://e-docs.bea.com/wls/docs70/adminguide/logging.html">http://e-docs.bea.com/wls/docs70/adminguide/logging.html</a></div> <div><b>Note:</b> The server log file is created the first time the server is started.</div> <div>2. Search the log file for the following values: <code>java.vm.version</code> <code>java.vm.vendor</code> These entries in the log file provide the build version of the JVM and the JVM vendor (for example Sun Microsystems Inc. or BEA Systems, Inc.)</div>

## Understanding the WebLogic Platform Windows Shortcuts

When installing WebLogic Platform on a Windows system, the installation program automatically uses BEA WebLogic Platform as the parent folder for the installation. As additional BEA Home directories are added to the system, the installation program continues to create new BEA product folders using the convention shown in the following figure.

**Figure 8-1 Tracking Multiple BEA Home Directories on the Same System**

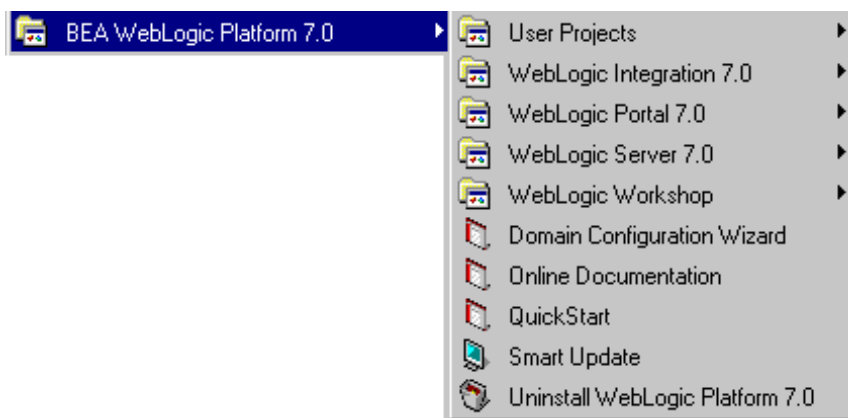


Each BEA Home directory has an associated BEA product folder. To differentiate between the products contained in different BEA Home directories, BEAHOME $n$  is appended to the folder name. The numbers associated with BEAHOME are sequential starting at 2; no number appears if only one BEA Home directory is created on a Windows system.

## WebLogic Platform Start Menu

The WebLogic Platform 7.0 folder (Start→Programs→BEA WebLogic Platform) contains the shortcut files shown in the following figure.

**Figure 8-2 WebLogic Platform 7.0 Start Menu**



- *User Projects*—contains a folder for each domain that you create using the Configuration Wizard. The domain folders contain shortcuts for launching the server if you chose to create a start menu option when you created the domain. If you configured a domain for WebLogic

Integration, a shortcut for the Integration Database Wizard is installed. For details about creating domains using the Configuration Wizard, see *Using the Configuration Wizard*.

- *WebLogic Integration 7.0*—contains shortcuts to launch the WebLogic Integration Tools and examples. For details about using WebLogic Integration, see the WebLogic Integration documentation set at the following URL:

<http://e-docs.bea.com/wli/docs70/index.htm>

- *WebLogic Portal 7.0*—contains shortcuts to launch the WebLogic Portal tools and examples. For details about using WebLogic Portal, see the WebLogic Portal documentation set at the following URL:

<http://e-docs.bea.com/wlp/docs70/index.htm>

- *WebLogic Server 7.0*—contains shortcuts to launch the Examples and Pet Store servers, the WebLogic Builder, and a page containing introductory information about WebLogic Server. For details about using WebLogic Server, see the WebLogic Server documentation set at the following URL:

<http://e-docs.bea.com/wls/docs70/index.html>

- *WebLogic Workshop*—contains shortcuts to launch the WebLogic Workshop and examples. For details about using WebLogic Workshop, see the WebLogic Workshop documentation set at the following URL:

<http://e-docs.bea.com/workshop/docs70/index.html>

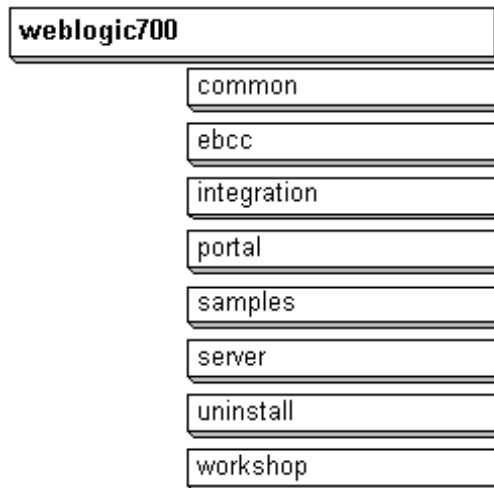
- *Domain Configuration Wizard*—starts the Configuration Wizard to assist you in creating user domains. For information about the Configuration Wizard, see *Using the Configuration Wizard* at the following URL:

<http://e-docs.bea.com/platform/docs70/configwiz/index.html>

- *Online Documentation*—provides a link to the BEA WebLogic Platform online documentation on the e-docs Web site.
- *QuickStart*—starts the WebLogic Platform QuickStart application designed to assist first-time users in evaluating, learning, and using WebLogic Platform.
- *Smart Update*—launches Smart Update to check for updates available for installed BEA products, and installs the updates as required.
- *Uninstall WebLogic Platform 7.0*—launches the WebLogic Platform 7.0 uninstallation program. For more information, see [Chapter 7, “Uninstalling WebLogic Platform.”](#)

## Understanding the WebLogic Platform Product Directory Structure

During the WebLogic Platform installation, you are asked to select or create a BEA Home directory and a product installation directory. For information about the BEA Home directory, see [“Choosing a BEA Home Directory” on page 1-15](#). For a typical installation, the installation program creates the following directory structure for WebLogic Platform software, which may or may not be in the BEA Home directory. [Table 8-3](#) describes the contents of each directory.



**Table 8-3 Product Installation Directory Structure**

This directory . . .	Contains . . .
<code>weblogic700</code>	Folders for files shared by all WebLogic Platform components, as well as individual folders for each installed WebLogic Platform component. WebLogic Platform components include WebLogic Server, WebLogic Integration, WebLogic Portal, and WebLogic Workshop.
<code>common</code>	Files shared by WebLogic Platform components, including a template directory that contains <code>jar</code> files used by the Configuration Wizard when creating domains. The Configuration Wizard reads the contents of this folder and displays template options based on the <code>jar</code> files in the directory. For details on the Configuration Wizard, see <a href="#">Using the Configuration Wizard</a> .
<code>ebcc</code>	E-Business Control Center program files.
<code>integration</code>	WebLogic Integration program files.
<code>portal</code>	WebLogic Portal program files.
<code>samples</code>	Sample code, resources, and preconfigured sample domains designed to help you learn how to develop your own applications using the WebLogic Platform software. Samples are organized by components installed on the system. For example, the <code>platform</code> folder in this directory contains the <code>e2eDomain</code> source code for executing the WebLogic Platform Tour. Similarly, the <code>server</code> folder contains the <code>examples</code> and <code>petstore</code> domains, source code for the examples and Pet Store sample applications, and the PointBase evaluation software, located in the <code>server/eval</code> folder.
<code>server</code>	WebLogic Server program files.
<code>uninstall</code>	Code required to uninstall the WebLogic Platform software.
<code>workshop</code>	WebLogic Workshop application and documentation files.



# Installing BEA EDI Connect for WebLogic Integration

BEA provides optional EDI support through two components: the BEA WebLogic Adapter for Power.Enterprise! 3.1 (delivered with BEA WebLogic Platform) and BEA EDI Connect for WebLogic Integration (purchased separately as Power.Enterprise!). The BEA WebLogic Adapter for Power.Enterprise! is installed as part of the standard WebLogic Platform installation. This section provides the requirements and instructions for installing the Power.Enterprise! server (Power.Server!) and clients (Power.Map! and Power.Manager!) provided by BEA EDI Connect for WebLogic Integration.

This section includes the following topics:

- [Power.Server! Requirements](#)
- [Installing the Power.Enterprise! Server, Power.Server!](#)
- [Installing the Power.Enterprise! Client: Power.Map! and Power.Manager!](#)
- [Installing the BEA EDI Connect for WebLogic Integration License](#)

## Power.Server! Requirements

The following sections describe the database, security, and system requirements for the Power.Enterprise! server.

### Database Requirements

Verify that your server database meets the following requirements:

- Oracle 8i, SQL Server 2000, or DB2 7.2
- Map repository size = 50 MB
- 1000 trading partners = 50 MB
- 250 K sessions without data banking = 400 MB
- 250 K sessions with data banking = 900 MB

### Security Requirement

For security reasons, deploy EDI Connect for WebLogic Integration behind a firewall. To allow HTTP access for outside users, you can either provide direct access through your firewall or set up a proxy server.

### System Requirements

Verify that your server meets the following system requirements:

- Sun Solaris 7, HP-UX 11, Windows NT 4.0, Windows 2000, or AIX 4.3.3
- 512 MB memory minimum, 1 GB recommended
- 100 MB disk space

**Note:** For UNIX operating systems, make sure all necessary patches are installed to support Java JRE version 1.3.

## Installing the Power.Enterprise! Server, Power.Server!

During installation of Power.Server!, you will need to provide the following information:

- Name of the Server

- Server Control Port
- Request API Port
- HTTP Port
- Secure HTTP Port
- Your License key
- Database Server Name (Oracle instance name)
- Database Port
- Database User ID
- Database Password
- Database Host Name—must be fully qualified, as it is also used by client machines

To install Power.Server!:

1. Insert the BEA EDI Connect for WebLogic Integration CD into the CD-ROM drive on your server.
2. Do one of the following:
  - On a Windows platform, follow the on-screen instructions.
  - On a UNIX platform, run `setup.sh` from the CD-ROM.

## Installing the Power.Enterprise! Client: Power.Map! and Power.Manager!

The following section provides the machine requirements for the Power.Enterprise! client, followed by installation instructions.

### System Requirements

Your Power.Enterprise! client machine must meet the following minimum criteria:

- Windows 2000/NT 4.0
- 50 MB free disk space
- Internet Explorer 5.0
- 266 MHz Pentium-type processor, 128 MB

- 400 MHz Pentium III, 256 MB or equivalent recommended

## Installation Instructions

To install Power.Map! and Power.Manager! on a client machine:

1. Insert the BEA EDI Connect for WebLogic Integration CD into the client CD-ROM drive.
2. Follow the instructions displayed on the screen.

For additional information about EDI integration, see *Using EDI with WebLogic Integration*.

## Installing the BEA EDI Connect for WebLogic Integration License

Whether you download the EDI Connect for WebLogic Integration software (purchased separately) or install it from CD-ROM, you must obtain your Power.Enterprise! evaluation license from the BEA Web site, at the following URL:

[http://commerce.bea.com/downloads/weblogic\\_platform.jsp](http://commerce.bea.com/downloads/weblogic_platform.jsp)

Two license keys are required: one for the server, Power.Server!, and the other for the clients, Power.Manager! and Power.Map!. For evaluation purposes, the same license key that you download from the BEA Web site can be used for both the client and server software.

During installation of the client and server software, you are prompted to enter the license key. Please note that the evaluation license key expires 30 days after the license key is generated. (This is different from the behavior of the BEA WebLogic Platform evaluation license, which expires 90 days after the software is installed.)

A production license for Power.Enterprise! server and client components is provided when you purchase the EDI Connect for WebLogic Integration software. For more information, please contact your BEA sales representative.

To upgrade from an evaluation license to a permanent one, use one of the following procedures:

- On a Windows platform, launch the “License Activator (client)” or “License Activator (server)” from the PowerIt program group. A dialog box is displayed. Enter the new license key in the appropriate field.
- On a UNIX platform, go to the `Power.Enterprise!_installation_directory/bin` directory and execute the `license_key_activator.sh` script. An X Window-based user interface is launched, allowing you to upgrade the license key.