



# BEA WebLogic Platform™

## Installing BEA WebLogic Platform

# Copyright

Copyright © 2005 BEA Systems, Inc. All Rights Reserved.

## Restricted Rights Legend

This software and documentation is subject to and made available only pursuant to the terms of the BEA Systems License Agreement and may be used or copied only in accordance with the terms of that agreement. It is against the law to copy the software except as specifically allowed in the agreement. This document may not, in whole or in part, be copied, photocopied, reproduced, translated, or reduced to any electronic medium or machine readable form without prior consent, in writing, from BEA Systems, Inc.

Use, duplication or disclosure by the U.S. Government is subject to restrictions set forth in the BEA Systems License Agreement and in subparagraph (c)(1) of the Commercial Computer Software-Restricted Rights Clause at FAR 52.227-19; subparagraph (c)(1)(ii) of the Rights in Technical Data and Computer Software clause at DFARS 252.227-7013, subparagraph (d) of the Commercial Computer Software--Licensing clause at NASA FAR supplement 16-52.227-86; or their equivalent.

Information in this document is subject to change without notice and does not represent a commitment on the part of BEA Systems. THE SOFTWARE AND DOCUMENTATION ARE PROVIDED "AS IS" WITHOUT WARRANTY OF ANY KIND INCLUDING WITHOUT LIMITATION, ANY WARRANTY OF MERCHANTABILITY OR FITNESS FOR A PARTICULAR PURPOSE. FURTHER, BEA Systems DOES NOT WARRANT, GUARANTEE, OR MAKE ANY REPRESENTATIONS REGARDING THE USE, OR THE RESULTS OF THE USE, OF THE SOFTWARE OR WRITTEN MATERIAL IN TERMS OF CORRECTNESS, ACCURACY, RELIABILITY, OR OTHERWISE.

## Trademarks or Service Marks

BEA, BEA JRockit, BEA Liquid Data for WebLogic, BEA WebLogic Server, Built on BEA, Jolt, JoltBeans, SteelThread, Top End, Tuxedo, and WebLogic are registered trademarks of BEA Systems, Inc. BEA AquaLogic, BEA AquaLogic Data Services Platform, BEA AquaLogic Enterprise Security, BEA AquaLogic Service Bus, BEA AquaLogic Service Registry, BEA Builder, BEA Campaign Manager for WebLogic, BEA eLink, BEA Manager, BEA MessageQ, BEA WebLogic Commerce Server, BEA WebLogic Enterprise, BEA WebLogic Enterprise Platform, BEA WebLogic Enterprise Security, BEA WebLogic Express, BEA WebLogic Integration, BEA WebLogic Java Adapter for Mainframe, BEA WebLogic JDriver, BEA WebLogic JRockit, BEA WebLogic Log Central, BEA WebLogic Personalization Server, BEA WebLogic Platform, BEA WebLogic Portal, BEA WebLogic Server Process Edition, BEA WebLogic WorkGroup Edition, BEA WebLogic Workshop, and Liquid Computing are trademarks of BEA Systems, Inc. BEA Mission Critical Support is a service mark of BEA Systems, Inc. All other company and product names may be the subject of intellectual property rights reserved by third parties.

All other trademarks are the property of their respective companies.

# Contents

## About This Document

What You Need to Know .....	x
Product Documentation on the dev2dev Web Site. ....	x
Related Information .....	x
Contact Us! .....	x
Documentation Conventions .....	xi

## 1. Preparing to Install WebLogic Platform

About BEA WebLogic Platform Installation. ....	1-2
WebLogic Express Support. ....	1-2
WebLogic Server Process Edition Support .....	1-2
Installation .....	1-3
Licensing .....	1-3
WebLogic Platform ISV Edition Support. ....	1-4
Installation .....	1-4
Licensing .....	1-4
Installation Methods. ....	1-5
WebLogic Platform Software Components .....	1-5
WebLogic Server .....	1-6
WebLogic Workshop .....	1-6
WebLogic Integration .....	1-7
Installing the TIBCO Rendezvous Control and Event Generator Subcomponent ....	1-8

WebLogic Portal . . . . .	1-9
WebLogic Platform Samples and Utilities. . . . .	1-9
BEA JRockit SDK. . . . .	1-9
Dependencies Between Installable Components. . . . .	1-10
WebLogic Platform Distribution Methods. . . . .	1-11
Web Distribution . . . . .	1-11
CD-ROM Distribution . . . . .	1-12
Web Distribution of Service Packs and Rolling Patches . . . . .	1-12
Installation Prerequisites . . . . .	1-13
System Requirements . . . . .	1-13
Temporary Disk Space Requirements . . . . .	1-14
Administrator Privileges. . . . .	1-15
Licensing and Encryption. . . . .	1-16
About 128-Bit Encryption . . . . .	1-16
Choosing a Type of Installation . . . . .	1-17
Complete Installation . . . . .	1-17
Custom Installation. . . . .	1-17
Installing the Node Manager as a Windows Service. . . . .	1-18
Selecting Directories for the WebLogic Platform Installation . . . . .	1-19
Choosing a BEA Home Directory . . . . .	1-19
Understanding the Functions of the BEA Home Directory. . . . .	1-20
Creating Multiple BEA Home Directories. . . . .	1-23
Choosing a Product Installation Directory . . . . .	1-23
Generating a Verbose Installation Log . . . . .	1-24
Syntax . . . . .	1-24
Where to Find Upgrade Information . . . . .	1-25
About Smart Update . . . . .	1-25

## 2. Installing WebLogic Platform Using Graphical-Mode Installation

Before You Start .....	2-1
Starting the Installation Program in Graphical Mode on Windows Platforms.....	2-3
Starting the Installation Program in Graphical Mode on UNIX Platforms.....	2-4
Starting Graphical-Mode Installation for .bin Installation Files.....	2-4
Starting Graphical-Mode Installation for .jar Installation Files .....	2-5
Running the Installation Program .....	2-7
What's Next? .....	2-11

## 3. Installing WebLogic Platform Using Console-Mode Installation

Before You Start .....	3-1
Starting Console-Mode Installation on Windows Systems .....	3-3
Starting Console-Mode Installation on UNIX Systems .....	3-4
Starting Console-Mode Installation for .bin Installation Files .....	3-4
Starting Console-Mode Installation for .jar Installation Files .....	3-6
Running Console-Mode Installation .....	3-7
What's Next? .....	3-13

## 4. Installing WebLogic Platform Using Silent-Mode Installation

What Is Silent-Mode Installation?.....	4-1
Before You Start .....	4-2
Using Silent-Mode Installation: Main Steps.....	4-3
Important Considerations for Silent-Mode Installation.....	4-3
Creating a Silent-Mode Installation Template File.....	4-4
Guidelines for Component Selection .....	4-7
Sample Template File for Silent-Mode Installation .....	4-7
Starting the Silent-Mode Installation Process on a Windows System.....	4-8

Starting the Silent-Mode Installation Process on a UNIX System .....	4-8
Starting Silent-Mode Installation for .bin Installation Files.....	4-9
Starting Silent-Mode Installation for .jar Installation Files .....	4-9
Returning Exit Codes to the Console.....	4-10
What's Next?.....	4-12

## 5. Performing Post-Installation Tasks

Using QuickStart .....	5-1
Using an Alternate Database .....	5-2
Using the TIBCO Rendezvous Event Generator .....	5-3
Determining Which SDK Version You Are Using .....	5-3
Understanding the WebLogic Platform Windows Shortcuts .....	5-4
Understanding the WebLogic Platform Product Directory Structure .....	5-6

## 6. Installing and Updating WebLogic Platform License Files

About WebLogic Platform Licenses .....	6-1
Updating Your license.bea File .....	6-4
Important Considerations for Updating Your license.bea File .....	6-5
Updating license.bea Using the UpdateLicense Utility .....	6-6
Replacing Your license.bea File .....	6-7
Upgrading Licenses from Previous WebLogic Platform Releases.....	6-7
Installing Licenses for Use with Promotional CD Distributions.....	6-8

## 7. Installing Service Packs and Rolling Patches

About Service Packs and Rolling Patches.....	7-1
Important Note If You Use the Node Manager in a Clustered Environment.....	7-2
Installing Service Packs and Rolling Patches Using Smart Update.....	7-3
Installing Service Packs and Rolling Patches Using a Downloadable Upgrade Installer .....	7-6
Using the Upgrade Installer in Graphical Mode.....	7-7

Using the Upgrade Installer in Console Mode . . . . .	7-10
Using the Upgrade Installer in Silent Mode. . . . .	7-14
Creating a Silent-Mode Upgrade Installation XML File . . . . .	7-17
Sample Template File for Silent-Mode Upgrade Installation. . . . .	7-18
Uninstalling Maintenance Upgrades Using Smart Update . . . . .	7-19
Upgrading Web Server Plug-Ins. . . . .	7-20

## 8. Uninstalling WebLogic Platform

About the Uninstallation Program . . . . .	8-1
Uninstalling Service Packs and Rolling Patches. . . . .	8-2
Uninstalling WebLogic Platform in Graphical Mode. . . . .	8-3
Uninstalling WebLogic Platform in Console Mode . . . . .	8-4
Uninstalling WebLogic Platform in Silent Mode . . . . .	8-6
Uninstalling a Service Pack or Rolling Patch in Graphical Mode . . . . .	8-8
Uninstalling a Service Pack or Rolling Patch in Console Mode. . . . .	8-8
Reinstalling WebLogic Platform . . . . .	8-9

## Index





# About This Document

This document explains how to install the BEA WebLogic Platform™ software on both Windows and UNIX systems.

It is organized as follows:

- [Chapter 1, “Preparing to Install WebLogic Platform,”](#) provides the basic information you need to know before installing WebLogic Platform.
- [Chapter 2, “Installing WebLogic Platform Using Graphical-Mode Installation,”](#) describes how to install the WebLogic Platform software on Windows and UNIX systems using a Java-based graphical user interface (GUI).
- [Chapter 3, “Installing WebLogic Platform Using Console-Mode Installation,”](#) discusses how to install WebLogic Platform on Windows and UNIX systems using a text-based interface.
- [Chapter 4, “Installing WebLogic Platform Using Silent-Mode Installation,”](#) describes how to install WebLogic Platform without user intervention by using a template file during the installation process.
- [Chapter 5, “Performing Post-Installation Tasks,”](#) explains what you should do after you install the software.
- [Chapter 6, “Installing and Updating WebLogic Platform License Files,”](#) describes the license types available for WebLogic Platform, and it explains how to update your license file.
- [Chapter 7, “Installing Service Packs and Rolling Patches,”](#) describes how to launch Smart Update and check for available service packs.

- [Chapter 8, “Uninstalling WebLogic Platform,”](#) provides procedures for uninstalling WebLogic Platform in graphical, console, and silent mode.

## What You Need to Know

This document is intended for system administrators or application developers who are installing WebLogic Platform software. It is assumed that readers are familiar with Web technologies and have a general understanding of Windows and UNIX systems.

## Product Documentation on the dev2dev Web Site

BEA product documentation, along with other information about BEA software, is available from the BEA dev2dev Web site at <http://dev2dev.bea.com>.

To view the documentation for a particular product, select that product from the list on the dev2dev page; the home page for the specified product is displayed. From the menu on the left side of the screen, select Documentation for the appropriate release. The home page for the complete documentation set for the product and release you have selected is displayed.

## Related Information

Other WebLogic Platform documents that you may find helpful when installing the WebLogic Platform software are:

- *Introducing BEA WebLogic Platform*
- *Introduction to WebLogic Server and WebLogic Express*
- *Creating WebLogic Configurations Using the Configuration Wizard*
- *WebLogic Server Process Edition Overview*

## Contact Us!

Your feedback on the BEA WebLogic Platform documentation is important to us. Send us e-mail at **[docsupport@bea.com](mailto:docsupport@bea.com)** if you have questions or comments. Your comments will be reviewed directly by the BEA professionals who create and update the WebLogic Platform documentation.

In your e-mail message, please indicate which release of the WebLogic Platform documentation you are using.

If you have any questions about this version of BEA WebLogic Platform, or if you have problems installing and running BEA WebLogic Platform, contact BEA Customer Support at

<http://support.bea.com>. You can also contact Customer Support by using the contact information provided on the quick reference sheet titled “BEA Customer Support,” which is included in the product package.

When contacting Customer Support, be prepared to provide the following information:

- Your name, e-mail address, phone number, and fax number
- Your company name and company address
- Your machine type and authorization codes
- The name and version of the product you are using
- A description of the problem and the content of pertinent error messages

## Documentation Conventions

The following documentation conventions are used throughout this document.

Convention	Item
Ctrl+Tab	Indicates that you must press two or more keys simultaneously.
<i>italics</i>	Indicates emphasis or book titles.
monospace text	<p>Indicates <i>user input</i>, as shown in the following examples:</p> <p>Filenames: <code>config.xml</code></p> <p>Pathnames: <code>BEAHOME/config/examples</code></p> <p>Commands: <code>java -Dbea.home=BEA_HOME</code></p> <p>Code: <code>public TextMsg createTextMsg()</code></p> <p>Indicates <i>computer output</i>, such as error messages, as shown in the following example:</p> <p>Exception occurred during event  dispatching:java.lang.ArrayIndexOutOfBoundsException: No such  child: 0</p>
monospace boldface text	<p>Identifies significant words in code.</p> <p><i>Example:</i></p> <pre>void <b>commit</b> ( )</pre>

Convention	Item
<i>monospace</i> <i>italic</i> text	Identifies variables in code. <i>Example:</i> String <i>expr</i>
{ }	Indicates a set of choices in a syntax line. The braces themselves should never be typed.
[ ]	Indicates optional items in a syntax line. The brackets themselves should never be typed. <i>Example:</i> java utils.MulticastTest -n <i>name</i> [-p <i>portnumber</i> ]
	Separates mutually exclusive choices in a syntax line. The symbol itself should never be typed. <i>Example:</i> java weblogic.deploy [list deploy update]
...	Indicates one of the following in a command line: That an argument can be repeated several times in a command line That the statement omits additional optional arguments That you can enter additional parameters, values, or other information The ellipsis itself should never be typed. <i>Example:</i> buildobjclient [-v] [-o <i>name</i> ] [-f "file1.cpp file2.cpp file3.cpp . . ."]
.	Indicates the omission of items from a code example or from a syntax line. The vertical ellipsis itself should never be typed.

# Preparing to Install WebLogic Platform

BEA WebLogic Platform 8.1 includes application infrastructure technology from proven BEA products that are used by thousands of customers worldwide, including BEA WebLogic Server®, BEA WebLogic Workshop™, BEA WebLogic Portal™, BEA WebLogic Integration™, and BEA JRockit® 1.4.2 SDK.

You can install WebLogic Server using a separate WebLogic Server installation program, or as a component selection using the WebLogic Platform installation program. The information provided in this document describes both methods of installation.

The following sections provide information that you need to know before installing the BEA WebLogic Platform software:

- [About BEA WebLogic Platform Installation](#)
- [WebLogic Platform Software Components](#)
- [Dependencies Between Installable Components](#)
- [WebLogic Platform Distribution Methods](#)
- [Installation Prerequisites](#)
- [Choosing a Type of Installation](#)
- [Installing the Node Manager as a Windows Service](#)
- [Selecting Directories for the WebLogic Platform Installation](#)
- [Where to Find Upgrade Information](#)
- [About Smart Update](#)

## About BEA WebLogic Platform Installation

BEA WebLogic Platform 8.1 is distributed and installed using the BEA Installation and Distribution System, which provides a complete framework for the following:

- Simplified distribution of BEA products via download from the BEA Web site using a net installer.
- Installation and uninstallation of the entire WebLogic Platform product, or individual components, as desired.
- Simplified mechanism for obtaining and installing product upgrades using Smart Update.
- The ability to launch installers for third-party products.

Two installation programs are available: a WebLogic Platform installer for all components of WebLogic Platform, and a WebLogic Server installer, which includes WebLogic Server and WebLogic Workshop only. Both programs provide the same functionality; all installation procedures described in this document apply to both installers.

## WebLogic Express Support

You can use the WebLogic Server or WebLogic Platform installation program to install BEA WebLogic Express™. WebLogic Express is a cost-effective entry point to the WebLogic Product Family creating a productive ramp for customers to begin using BEA's market-leading application server technology. From WebLogic Express, customers can easily upgrade to BEA WebLogic Platform, where they can take advantage of a wide variety of enterprise-level functionality.

**Note:** WebLogic Express does not support applications developed in the WebLogic Workshop IDE.

To install WebLogic Express, you install WebLogic Server and then install a WebLogic Express license. The WebLogic Express license activates WebLogic Express features. For additional information about WebLogic Express, see the WebLogic Express documentation at the following URL:

<http://e-docs.bea.com/wls/docs81/wlx.html>

## WebLogic Server Process Edition Support

You must use the WebLogic Platform installation program to install WebLogic Server Process Edition™. WebLogic Server Process Edition provides you with the technologies and tools you need to effectively service-enable your existing resources, create composite services using process-driven development, and extend these composite services to interact with other applications and

technologies. Each of these phases allows you to take distinct measurable steps that are effective for both project and enterprise level architectures.

## Installation

To use WebLogic Server Process Edition, you must install WebLogic Integration using the WebLogic Platform installation program. You can install WebLogic Integration (using any of the installation methods described in this document) as part of a complete WebLogic Platform installation, or individually by performing a custom installation, and selecting WebLogic Integration.

**Note:** When you install WebLogic Integration, WebLogic Server and WebLogic Workshop are installed by default.

For standard installation procedures, refer to the following chapters:

- [Chapter 2, “Installing WebLogic Platform Using Graphical-Mode Installation”](#)
- [Chapter 3, “Installing WebLogic Platform Using Console-Mode Installation”](#)
- [Chapter 4, “Installing WebLogic Platform Using Silent-Mode Installation”](#)

## Licensing

The development license installed on your system when you install WebLogic Integration enables full WebLogic Integration functionality for use in a development environment. To use WebLogic Server Process Edition in a production environment, you must install a WebLogic Server Process Edition license.

WebLogic Server Process Edition enables a subset of the WebLogic Integration functionality. To avoid building applications that are not supported by the WebLogic Server Process Edition license, you should change the development mode in the WebLogic Workshop IDE to WebLogic Server Process Edition. For more information, refer to the section “WebLogic Server Process Edition Mode” in the *WebLogic Server Process Edition Overview* at the following URL:

[http://e-docs.bea.com/wli/docs81/peoverview/introduction.html#process\\_edit ion\\_mode](http://e-docs.bea.com/wli/docs81/peoverview/introduction.html#process_edit ion_mode).

**Note:** WebLogic Integration and WebLogic Platform licenses include support for WebLogic Server Process Edition functionality, and may also be used for WebLogic Server Process Edition applications. For more information about WebLogic Platform licenses, see the *Licensing* page at <http://e-docs.bea.com/platform/docs81/interm/license.html>.

Instructions for installing a license with WebLogic Server Process Edition support are provided in [Chapter 6, “Installing and Updating WebLogic Platform License Files.”](#)

For more information about WebLogic Server Process Edition, see the WebLogic Server Process Edition documentation at the following URL:

<http://e-docs.bea.com/wli/docs81/wlspe.html>

## WebLogic Platform ISV Edition Support

You must use the WebLogic Platform installation program to install WebLogic Platform ISV Edition. WebLogic Platform ISV Edition is a special software package tailored for ISVs who have a current agreement with BEA to build value-added solutions on WebLogic. WebLogic Platform ISV Edition comprises a set of WebLogic Platform components specifically packaged to help ISVs jumpstart their service-oriented architecture (SOA) initiatives.

### Installation

To use WebLogic Platform ISV Edition, you must install all the WebLogic Platform product components using the WebLogic Platform installation program. You can do so using any of the installation methods described in this document.

For standard installation procedures, refer to the following chapters:

- [Chapter 2, “Installing WebLogic Platform Using Graphical-Mode Installation”](#)
- [Chapter 3, “Installing WebLogic Platform Using Console-Mode Installation”](#)
- [Chapter 4, “Installing WebLogic Platform Using Silent-Mode Installation”](#)

### Licensing

The development license installed on your system when you install WebLogic Platform enables full WebLogic Platform functionality for use in a development environment. To use WebLogic Platform ISV Edition in a production environment, you must install a WebLogic Platform ISV Edition license.

WebLogic Platform ISV Edition enables a subset of the WebLogic Platform functionality. It provides full WebLogic Server, WebLogic Workshop, and BEA JRockit SDK functionality, and a subset of WebLogic Integration and WebLogic Portal functionality. The WebLogic Integration features included with WebLogic Platform ISV Edition are the same as those included with WebLogic Server Process Edition.

Instructions for installing a license with WebLogic Platform ISV Edition support are provided in [Chapter 6, “Installing and Updating WebLogic Platform License Files.”](#)

For more information about WebLogic Platform ISV Edition, see the *WebLogic Platform ISV Partners’ Guide* at the following URL: <http://e-docs.bea.com/platform/docs81/isv/index.html>.



## Installation Methods

The BEA installation program supports the following methods for installing the BEA WebLogic Platform software:

- *Graphical mode*

Graphical-mode installation is an interactive, GUI-based method for installing WebLogic Platform. It can be run on both Windows and UNIX systems. For installation procedures, see [Chapter 2, “Installing WebLogic Platform Using Graphical-Mode Installation.”](#)

**Note:** If you want to run graphical-mode installation, the console attached to the machine on which you are installing the software must support a Java-based GUI. All consoles for Windows systems support Java-based GUIs, but not all consoles for UNIX systems do. If you attempt to start the installation program in graphical mode on a system that cannot support a graphical display, the installation program automatically starts console-mode installation.

- *Console mode*

Console-mode installation is an interactive, text-based method for installing WebLogic Platform, from the command line, on either a UNIX system or a Windows system. For instructions for using this method, see [Chapter 3, “Installing WebLogic Platform Using Console-Mode Installation.”](#)

- *Silent mode*

Silent-mode installation is a noninteractive method of installing WebLogic Platform that requires the use of an XML properties file for selecting installation options. You can run silent-mode installation in either of two ways: as part of a script or from the command line. Silent-mode installation is a way of setting installation configurations only once and then using those configurations to duplicate the installation on many machines. For instructions, see [Chapter 4, “Installing WebLogic Platform Using Silent-Mode Installation.”](#)

## WebLogic Platform Software Components

WebLogic Platform consists of the following software that can be installed on your system:

- [WebLogic Server](#)
- [WebLogic Workshop](#)
- [WebLogic Integration](#)
- [WebLogic Portal](#)

- [WebLogic Platform Samples and Utilities](#)
- [BEA JRockit SDK](#)

**Note:** If you are using the WebLogic Server installation program, only the WebLogic Server and WebLogic Workshop components are available for installation.

For additional information about:

- The features and capabilities of the WebLogic Platform components, see *Introducing BEA WebLogic Platform* at <http://e-docs.bea.com/platform/docs81/intro/index.html>
- The features and capabilities of WebLogic Server, see *Introduction to Weblogic Server and WebLogic Express* at <http://e-docs.bea.com/wls/docs81/intro/index.html>
- The features and capabilities of BEA JRockit, see *Introduction to BEA JRockit SDK* at <http://e-docs.bea.com/wljrockit/docs142/intro/index.html>
- Operating systems and hardware supported by WebLogic Platform 8.1, see *Supported Configurations for WebLogic Platform 8.1* at [http://e-docs.bea.com/platform/suppconfigs/configs81/81\\_over/index.html](http://e-docs.bea.com/platform/suppconfigs/configs81/81_over/index.html)

## WebLogic Server

WebLogic Server is the foundation of the WebLogic Platform product: it provides the core services that ensure a reliable, available, scalable, and high performing execution environment for your application. If you select the entire WebLogic Server component, the installation program installs the WebLogic Server program files and the server examples.

WebLogic Server consists of the following subcomponents:

- **Server**—WebLogic Server program files that contain the core Java 2 Enterprise Edition (J2EE) features.
- **Server Examples**—WebLogic Server examples and the MedRec example servers and sample applications. These servers and sample applications demonstrate a variety of J2EE features. Resources are provided to help you build, configure, and run each of the sample applications. You must install the server to install and use the WebLogic Server samples.

## WebLogic Workshop

WebLogic Workshop is a unified, visual development environment and run-time framework that lets all application developers—not only J2EE experts—rapidly create, test, and deploy enterprise-class Web applications, Web services, and custom controls for WebLogic Server, WebLogic Integration, and

WebLogic Portal. If you select the entire WebLogic Workshop component, the installation program installs the run-time framework, the visual development environment, and the Workshop samples.

WebLogic Workshop consists of the following subcomponents:

- Workshop Runtime Framework—an abstraction layer, provided on top of J2EE, to help all developers build Web applications, Web services, and custom controls.
  - WebLogic Workshop Application Developer Edition—a design-time visual development environment in which developers can build applications by adding methods and controls, setting properties, and writing business logic with Java.
- Note:** Development of WebLogic Integration and WebLogic Portal applications with the WebLogic Workshop IDE requires the installation of the corresponding WebLogic Workshop extensions.
- Workshop Samples—samples that demonstrate how to build applications with WebLogic Workshop.

## WebLogic Integration

WebLogic Integration provides a development and run-time framework for joining business process management and application integration capabilities into a single, flexible environment.

**Note:** The BPEL Import and Export Tools and the TIBCO Rendezvous™ Control and Event Generator subcomponents are not installed by default. To install them you need to choose Custom installation and select the check box for each subcomponent. Alternatively, you can clear the checkbox for the WebLogic Integration component, and then select it again. All the subcomponents are then selected and will be installed on your system.

**Note:** You must install WebLogic Integration to have access to the WebLogic Server Process Edition controls. For more information about WebLogic Server Process Edition, see the WebLogic Server Process Edition documentation at <http://e-docs.bea.com/wli/docs81/wlspe.html>

WebLogic Integration consists of the following subcomponents:

- Integration Server—the full set of components that comprise WebLogic Integration, including client components Application Integration Design Console, Integration Admin Console, Worklist, and Format Builder.
- WebLogic Workshop Integration Extension—framework and tools for integrating enterprise applications to provide an integrated development environment in WebLogic Workshop.

- Integration Examples—example application that illustrates the use of the Application Integration subcomponent of WebLogic Integration.
- BPEL Import and Export Tools—WebLogic Workshop design-time tools for importing and exporting processes developed in Business Process Execution Language (BPEL) 1.1.
  - The BPEL Import tool imports BPEL 1.1 compliant code into a Process Definition for Java (JPD) process file, where it can be used in the WebLogic Workshop design environment.
  - The BPEL Export tool exports the semantics of JPD code into BPEL, where it can be used in a BPEL-compatible design environment.

**Note:** The installation of this subcomponent requires the installation of the WebLogic Workshop Integration Extension.

- TIBCO Rendezvous™ Control and Event Generator—Package that enables business processes to send and receive messages in the TIBCO Rendezvous environment.
  - The TIBCO RV control is a Java control for WebLogic Workshop that enables seamless connection to, and transfer of data with, TIBCO Rendezvous using the Rendezvous daemon.
  - The TIBCO RV event generator is a WebLogic Integration event generator that listens for TIBCO Rendezvous messages and raises events to Message Broker channels.

**Note:** Use of the TIBCO Rendezvous™ Control and Event Generator with BEA WebLogic Integration in no manner confers or grants the right to use TIBCO Rendezvous™ including “dynamic libraries.” In order to use such TIBCO products, the user of the TIBCO Rendezvous™ Control and Event Generator must obtain a valid license from TIBCO.

## Installing the TIBCO Rendezvous Control and Event Generator Subcomponent

If you plan to install the TIBCO Rendezvous Control and Event Generator subcomponent of WebLogic Integration 8.1 SP5, you must install and configure TIBCO Rendezvous on your machine *before* you install WebLogic Integration.

Information about obtaining and installing a licensed copy of TIBCO Rendezvous is available at the following URL:

<http://www.tibco.com>

By simply following the installation instructions provided by TIBCO for this product, you can make sure that TIBCO Rendezvous is installed correctly, ready to be used later with WebLogic Integration. For more information, see the *TIBCO Rendezvous Control and Event Generator User Guide* at the following URL:

<http://e-docs.bea.com/wli/docs81/tibcorv/index.html>

## WebLogic Portal

WebLogic Portal simplifies the production and management of custom-fit portals. WebLogic Portal simplifies, personalizes, and lowers the cost of access to information, applications, and business processes, whether the person who needs such access is an employee, a partner, or a customer. If you select the entire WebLogic Portal component, the installation program installs the server program files, the WebLogic Workshop extension, and the samples.

WebLogic Portal consists of the following subcomponents:

- Portal Server—program files for the portal campaign and personalization services features.
- WebLogic Workshop Portal Extension—set of application-building designers and services in WebLogic Workshop, letting you add interaction management (personalization and behavior tracking) to your applications.
- Portal Examples—sample files for all of the WebLogic Portal functionality. These examples help you learn how WebLogic Portal works and demonstrate implementation techniques for your own solutions.

## WebLogic Platform Samples and Utilities

Platform Samples and Utilities apply to all components of WebLogic Platform; they cannot be used unless all WebLogic Platform components (WebLogic Server, WebLogic Workshop, WebLogic Integration, and WebLogic Portal) are installed.

The sample application is the Platform Tour: a fully integrated application that demonstrates key features of WebLogic Platform.

## BEA JRockit SDK

The BEA JRockit SDK provides tools, utilities, and a complete run-time environment for developing and running applications using the Java programming language. The BEA JRockit SDK includes the BEA JRockit Java Virtual Machine (JVM), the first commercial server-side JVM for Intel architectures. The BEA JRockit SDK is fully integrated into the WebLogic Platform package, and is supported by all WebLogic Platform components. In addition, it is available as a standalone SDK.

The BEA JRockit 1.4.2 SDK is installed automatically when you install WebLogic Server or WebLogic Platform on Windows and Linux platforms. On Windows platforms only, two Java 2 SDKs are installed on your system: the BEA JRockit SDK, optimized for server-side applications, and the Sun Java 2 SDK, provided for optional use by both client-side and server-side applications.

**Note:** The BEA JRockit 1.4.2 SDK is certified to be compatible with Sun Java 2 Standard Edition (J2SE), version 1.4.2.

For more information about BEA JRockit, see the BEA JRockit 1.4.2 SDK documentation at <http://e-docs.bea.com/wljrookit/docs142/index.html>.

For more information about operating systems, hardware, and SDKs supported by WebLogic Platform and WebLogic Server, see *Supported Configurations for WebLogic Platform 8.1* at [http://e-docs.bea.com/platform/suppconfigs/configs81/81\\_over/index.html](http://e-docs.bea.com/platform/suppconfigs/configs81/81_over/index.html)

## Dependencies Between Installable Components

The installation program performs dependency checking to ensure that all components that provide functionality on which other components depend for proper operation are installed. These dependencies are visible during graphical and console mode installations. When you select or deselect components to be installed, the installation program checks for dependencies between components and automatically modifies the list of selected components accordingly.

**Note:** The same dependencies are enforced during silent installation: components on which other components depend are installed even if they are not explicitly referenced in a silent script.

Some examples of component dependencies are as follows:

- All components require the installation of WebLogic Server. This requirement is enforced in an obvious way during a graphical-mode installation: if you clear the WebLogic Server component check box, the boxes for the remaining components are cleared because those components cannot be run without WebLogic Server.
- The server component for any WebLogic Platform product requires the installation of the WebLogic Server server component and the WebLogic Workshop runtime framework. The WebLogic Workshop runtime framework depends on the WebLogic Server server component, and the WebLogic Integration and WebLogic Portal server components depend on both the WebLogic Server server component and the WebLogic Workshop runtime framework.

**Note:** The WebLogic Integration server component also requires the installation of the WebLogic Workshop IDE.

- The WebLogic Workshop IDE extension for any WebLogic Platform product requires the installation of the WebLogic Workshop runtime framework, the IDE, and the server component of WebLogic Server. This is because all extension users require an IDE installation, and most IDE users require a local server to build their applications.

Dependency checking is also performed when you uninstall part of WebLogic Platform, to ensure that you do not uninstall a component that is required by another component.

# WebLogic Platform Distribution Methods

WebLogic Platform is distributed on both the BEA Web site and CD-ROM.

## Web Distribution

You can download the WebLogic Platform software from the BEA Web site at

<http://commerce.bea.com>.

Two methods are available for download:

- Net installer—this method (recommended) downloads a small setup file that enables you to select the components that you want to install on your system. The installer then downloads only the components you select. The net installer is approximately 23 MB.

Before the download begins, the net installer prompts you to provide the following information:

- Storage directory—the installation program downloads an archive file to your system for each component that you choose to install. By default, these archive files are downloaded to the temporary directory on your system. You can specify an alternate directory on your system for these files; they do not need to be collocated with the installation setup file, or with the installed software. If you do not specify an alternate directory, your temporary directory must have sufficient space to accommodate the archive files and the installation program. For more information about temporary space required by the installation program, see “[Temporary Disk Space Requirements](#)” on page 1-14. To conserve disk space, you can also specify that you want the downloaded files removed from your system after the installation is complete.
- HTTP Proxy—if you want to download these files using an HTTP proxy, you must specify the Host address and port numbers for the proxy server.
- Proxy authentication—if the HTTP proxy you are using requires server-side HTTP authentication, you must enter your username and password.

The net installer supports standard resume processing in the case of interrupted downloads. If the download is interrupted for any reason, either manually or by an unplanned network interruption, you can resume the download from the point at which it was interrupted. When the download is complete, the installation program performs an integrity check on the archive files that were downloaded to your system to verify that the files downloaded correctly.

- Package installer—this method downloads a standalone version of the installation program.
  - The WebLogic Platform installation program contains all of the WebLogic Platform software components described in “[WebLogic Platform Software Components](#)” on page 1-5. The package installer is approximately 520 MB.

- The WebLogic Server installation program contains WebLogic Server and related samples, WebLogic Workshop and related samples, and the BEA JRockit SDK (for Windows and Linux platforms only). The package installer is approximately 300 MB.

**Note:** If you are planning to install the software in silent mode, you must download the package installer. Silent-mode installation is not supported by the net installer.

## CD-ROM Distribution

If you purchased WebLogic Platform or WebLogic Server from your local sales representative, you will find the following items in the product box:

- CD-ROMs containing the product software for Windows, Solaris, HP-UX, and Linux
- BEA WebLogic Platform Online Documentation CD
- The following printed documents:
  - *Installing BEA WebLogic Platform* (this guide)
  - *Introducing BEA WebLogic Platform*
  - *Introduction to WebLogic Server and WebLogic Express*
  - *BEA Software License and Limited Warranty* pamphlet
  - *Customer Support Quick Reference and Other Important Information* card
  - A flyer that provides a list of URLs for the online Release Notes for each component
  - Legal agreements for third-party products

## Web Distribution of Service Packs and Rolling Patches

Any service packs and rolling patches are included in the latest distribution of WebLogic Platform 8.1, which you can download as described in “[Web Distribution](#)” on page 1-11. If you do not have WebLogic Platform 8.1 installed, you should install this distribution.

If you already have WebLogic Platform 8.1 installed, *and* if you have a BEA eSupport account, you can upgrade your software in one of the following ways:

- Use the Smart Update feature (recommended) to retrieve and install software updates from the BEA Web site. Smart Update retrieves updates only for those components that are currently installed in the target BEA Home directory.
- Download the Service Pack Upgrade from the BEA Customer Support Web site at <http://support.bea.com>, without downloading the entire WebLogic Platform distribution.



Details about installing WebLogic Platform service packs and rolling patches are provided in [Chapter 7, “Installing Service Packs and Rolling Patches.”](#)

If you do *not* have a BEA eSupport account, go to the following URL to get one:

<http://support.bea.com>

## Installation Prerequisites

The following sections specify the installation prerequisites for a WebLogic Platform installation:

- [System Requirements](#)
- [Temporary Disk Space Requirements](#)
- [Administrator Privileges](#)
- [Licensing and Encryption](#)

## System Requirements

The system requirements for WebLogic Platform are given in the following table.

**Table 1-1 System Requirements**

Component	Requirement
Platform configuration	A configuration of hardware, operating system, SDK, and database that is supported by WebLogic Platform is required. See <i>WebLogic Platform Supported Configurations</i> at <a href="http://e-docs.bea.com/platform/suppconfigs/index.html">http://e-docs.bea.com/platform/suppconfigs/index.html</a> . This document also specifies other prerequisites and recommendations, such as recommended versions of the Java 2 SDK.
Processor	For a full WebLogic Platform installation, a 1-GHz CPU is recommended.
Hard disk drive	A full WebLogic Platform installation requires approximately 1 GB of disk space.

Table 1-1 System Requirements (Continued)

Component	Requirement
Memory	Full WebLogic Platform installation—512 MB of RAM minimum, 1 GB recommended WebLogic Server (with Sun Java 2 SDK)—256 MB of RAM minimum, 512 MB or more recommended (without WebLogic Workshop) WebLogic Server (with BEA JRockit SDK)—512 MB of RAM minimum WebLogic Integration—512 MB RAM minimum, 1 GB recommended WebLogic Portal—512 MB of RAM minimum, 1 GB recommended WebLogic Workshop—512 MB RAM minimum, 1 GB recommended
Color bit depth display and size	For graphical user interface (GUI) mode installation, 8-bit color depth (256 colors) is required.  For console-mode and silent-mode installation, there is no color bit depth requirement.
Java 2 SDK	The WebLogic Platform installation program requires a Java run-time environment (JRE) to run. A JRE is bundled in the Windows installation program and in some UNIX installation programs (those with filenames ending in <code>.bin</code> ).  For other UNIX platforms, the WebLogic Platform installation program does not install a Java 2 SDK. Filenames for these installation programs end in <code>.jar</code> . To run the <code>.jar</code> installation programs, you must have the appropriate version of the Java 2 SDK installed on your system, and include the <code>bin</code> directory of the SDK at the beginning of the <code>PATH</code> variable definition. It is important that you use an SDK because the installation process sets the <code>JAVA_HOME</code> and related variables to point to this directory. For procedures, see one of the following: <ul style="list-style-type: none"><li>• <a href="#">“Starting Graphical-Mode Installation for jar Installation Files” on page 2-5</a></li><li>• <a href="#">“Starting Console-Mode Installation for jar Installation Files” on page 3-6</a></li></ul>

## Temporary Disk Space Requirements

The BEA installation program uses a temporary directory in which it extracts the files necessary to install WebLogic Platform on the target system. During the installation process, your temporary directory must contain sufficient space to accommodate the compressed Java run-time environment (JRE) bundled with the installation program and an uncompressed copy of the JRE that is expanded into the temporary directory. The extracted files are deleted from the temporary directory at the end of the installation process. As a general rule, installation programs require approximately 2.5 times the amount of temporary space that is ultimately required by the installed files.

By default, the installation program uses the following temporary directory:

- Windows platforms—directory referenced by the `TMP` system variable
- UNIX platforms—system-dependent temporary directory

**Note:** If you do not have enough temporary space to run the installation program, you are prompted to specify an alternate directory or exit the installation program.

To make sure that you have adequate temporary space, you may want to allocate an alternate directory for this purpose. To do so, follow the instructions provided in the following table.

On this platform . . .	Perform this step . . .
Windows	<p>Do one of the following:</p> <ul style="list-style-type: none"><li>• Set the <code>TMP</code> system variable to a directory of your choice.</li><li>• If starting the installation program from the command line, include the <code>-Djava.io.tmpdir=tmpdirpath</code> option replacing <i>tmpdirpath</i> with the full path of the directory that you want to designate as a temporary storage area for the WebLogic Platform installation program. For example: <pre>platformXXX_win32.exe -mode=console -Djava.io.tmpdir=D:\Temp</pre><p>In the filename used in this example, <i>XXX</i> represents the version number of the software you are installing.</p></li></ul>
UNIX	<p>Enter the following option on the command line when you start the installation program:</p> <pre>-Djava.io.tmpdir=tmpdirpath</pre> <p>Here, <i>tmpdirpath</i> is the full path of the directory that you want to designate as a temporary storage area for the WebLogic Platform installation program.</p>

## Administrator Privileges

Administrator privileges are required in the following circumstances:

- Installing Node Manager or an Administration Server as a Windows service

During a custom installation, you are presented with the option to install the WebLogic Server Node Manager as a Windows service. Also, if you choose to run the Configuration Wizard to create user domains, you can configure the Administration Server as a Windows service. When the Node Manager or a server is installed as a Windows service, it starts automatically each

time you boot your Windows system. You must have *Administrator* privileges to install the Node Manager or a server as a Windows service.

For additional information, see “Setting Up a WebLogic Server Instance as a Windows Service” in *Configuring and Managing WebLogic Server* at <http://e-docs.bea.com/wls/docs81/adminguide/winservice.html>.

- Using WebLogic Workshop

If WebLogic Workshop is installed on a Windows system by a user with Administrator privileges, then all users must have Administrator privileges to use WebLogic Workshop. Otherwise, you may encounter an error when running WebLogic Workshop applications.

## Licensing and Encryption

The WebLogic Platform software cannot be used without a valid license. When you install 8.1 SP3 or higher, the installation program installs two non-expiring licenses: a license to use for development (`license.bea`) and a license to use for limited scale production deployments (`license_scale_limited.bea`).

To use WebLogic Platform in a full-scale production environment, you must purchase a production license. To find out how to do so, contact your sales representative or visit the BEA corporate Web site at <http://www.bea.com>.

For more information about development, scale-limited, and production licenses, see “[About WebLogic Platform Licenses](#)” on page 6-1.

Development and production licenses for pre-8.1 versions of WebLogic Platform do not work with WebLogic Platform 8.1; any such license must be upgraded to 8.1. Procedures for upgrading a license file and installing permanent licenses are provided in [Chapter 6](#), “Installing and Updating WebLogic Platform License Files.”

## About 128-Bit Encryption

Secure sockets layer (SSL) encryption software is available with two levels of encryption: 56-bit and 128-bit. In 8.1 SP3 and higher, the license files installed with WebLogic Platform enable both 56-bit and 128-bit encryption by default.

For instructions about enabling 128-bit encryption for earlier releases of WebLogic Platform, see “Enabling 128-bit encryption in SP2 or Earlier” at [http://e-docs.bea.com/platform/docs81/sp\\_notes/sp\\_notes.html#128bit\\_encryption](http://e-docs.bea.com/platform/docs81/sp_notes/sp_notes.html#128bit_encryption).

## Choosing a Type of Installation

The WebLogic Platform installation program provides two types of installation: Complete and Custom.

### Complete Installation

In a complete installation, the following components are automatically installed:

- All software components included in the distribution. Software components vary depending on the software distribution method:
  - WebLogic Platform Package Installer or CD-ROM—all the software components provided with WebLogic Platform, including sample files, as described in [“WebLogic Platform Software Components” on page 1-5](#). Sample domains, as well as the WebLogic Platform Tour, are preconfigured for use with the PointBase database, allowing you to start running the samples as soon as the installation is complete.
  - WebLogic Server Package Installer—WebLogic Server and WebLogic Workshop program files and all related sample files.
  - Net Installer—All WebLogic Platform components, including WebLogic Server, WebLogic Workshop, WebLogic Integration, WebLogic Portal, and all related sample files.
- Two SDKs are installed on Windows platforms only: the Sun Java 2 SDK 1.4.2 and the BEA JRockit 1.4.2 SDK. For more information, see [“BEA JRockit SDK” on page 1-9](#).

The WebLogic Server Node Manager is *not* installed as a Windows service.

### Custom Installation

In a custom installation, you have the following options:

- You can choose which software components to install on your system. For a description of the software components provided with WebLogic Platform, see [“WebLogic Platform Software Components” on page 1-5](#).
- You can choose whether to install the WebLogic Server Node Manager as a Windows Service. See [“Installing the Node Manager as a Windows Service” on page 1-18](#). Sample domains preconfigured to use the PointBase database are created only for the installed components.

On Windows platforms, two SDKs are installed: the Sun Java 2 SDK 1.4.2 and the BEA JRockit 1.4.2 SDK. For more information, see [“BEA JRockit SDK” on page 1-9](#).

## Installing the Node Manager as a Windows Service

When installing WebLogic Platform on a Windows platform, you can optionally install the WebLogic Server Node Manager as a Windows service. The WebLogic Server Node Manager is used to:

- Start and stop managed servers in a domain.
- Monitor the self-reported health of managed servers and automatically kill server instances whose health state is “failed.”
- Automatically restart managed servers that have the “failed” health state, or have shut down unexpectedly due to a system crash or reboot.

In a custom installation, you can optionally install the Node Manager as a Windows Service. In a production environment, you usually install the Node Manager only on server machines that host managed server instances of WebLogic Server. The WebLogic Server Node Manager is not installed as a Windows service in a complete installation. In a development environment, you may want to install the Node Manager on a server machine that hosts both the administration server and managed server instances of WebLogic Platform.

The Node Manager is installed as a Windows service only under the following conditions:

- You are installing on a Windows platform.
- You are performing a custom installation.
- The Node Manager for the current version of WebLogic Platform is not already installed on the server.

After you install the Node Manager as a Windows service, the service is started the next time you reboot the system. You can also manually start the service from the Windows Services control panel.

When you uninstall WebLogic Platform, the service is uninstalled also.

**Notes:** By default, the WebLogic Server Node Manager uses port 5555. If the Node Manager for a previous version of WebLogic Server is installed on the machine, the new version does not start when Windows starts because of port contention. To make sure that the new version starts when Windows starts, reconfigure the Node Manager to use a different port.

The BEA Node Manager service is linked to a BEA Home directory. If you have multiple BEA Home directories on your machine and you uninstall WebLogic Platform in the BEA Home directory linked to the Node Manager service, the uninstaller removes the service. If you have other instances of WebLogic Server that rely on the Node Manager, you must manually start the Node Manager or reinstall the Node Manager service.

If you uninstall an instance of WebLogic Platform that is not in the BEA Home directory linked to the Node Manager service, the uninstallation program does not uninstall the Node Manager service.

For more information about the Node Manager, including instructions for installing it on a UNIX server, see the following topics in *Configuring and Managing WebLogic Server*:

- “Overview of Node Manager” at <http://e-docs.bea.com/wls/docs81/adminguide/nodemgr.html>
- “Configuring, Starting, and Stopping Node Manager” at <http://e-docs.bea.com/wls/docs81/adminguide/confignodemgr.html>

## Selecting Directories for the WebLogic Platform Installation

During installation of WebLogic Platform, you need to specify locations for the following directories:

- [BEA Home directory](#)
- [Product installation directory](#)

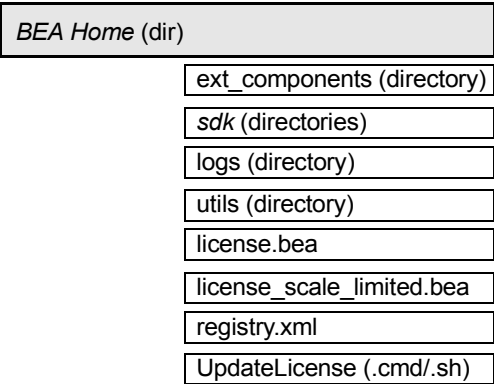
### Choosing a BEA Home Directory

When you install WebLogic Platform, you are prompted to specify a BEA Home directory. This directory serves as a repository for common files that are used by multiple BEA products installed on the same machine. For this reason, the BEA Home directory can be considered a *central support directory* for the BEA products installed on your system.

The files in the BEA Home directory are essential to ensuring that BEA software operates correctly on your system. They perform the following types of functions:

- Ensure that licensing works correctly for the installed BEA products
- Facilitate checking of cross-product dependencies during installation
- Facilitate Service Pack installation

The following illustration shows the structure of a sample BEA Home directory, created by the WebLogic Platform installation program, that includes a bundled SDK.



This illustration depicts only the files and directories required in the BEA Home directory. If you choose the default product installation directory, however, you will see additional directories in the BEA Home directory, such as `weblogic81`. Although the default location for the product installation directory is within the BEA Home directory, you can select a different location outside the BEA Home directory.

**Note:** For some UNIX platforms, the WebLogic Platform installation program does *not* install the SDK.

During installation of WebLogic Platform, you are prompted to choose an existing BEA Home directory or specify a path to create a new BEA Home directory. If you choose to create a new directory, the WebLogic Platform installation program automatically creates the directory for you.

**Note:** For a BEA Home directory, you are allowed to install only one instance of each version of a BEA product that uses the BEA Home directory convention. For example, you can install only one instance of WebLogic Platform 8.1 in a BEA Home directory, but that BEA Home directory may also contain an instance of WebLogic Platform 7.0.

## Understanding the Functions of the BEA Home Directory

The files and directories in the BEA Home directory are described in the following table.



**Table 1-2 BEA Home Directory Description**

Component	Description
ext_components directory	<p data-bbox="548 427 1220 510">Contains controls for third-party components and the TIBCO Rendezvous Control, if the latter is selected during the installation of WebLogic Integration.</p> <p data-bbox="548 526 1237 727">Java controls are server-side components that encapsulate external resources and business logic for use in Workshop applications. This directory contains two types of controls files supported by WebLogic Platform: <i>full control implementation files</i> (ready to be used) and <i>control stub files</i> (utilities that download the specified control implementations when needed). Both types of control files are integrated with the Workshop IDE and managed by the Workshop run-time framework.</p> <p data-bbox="548 743 1237 885">The full control implementation files delivered in ext_components are automatically installed with WebLogic Platform. When you are ready to start using them, however, you must integrate them, manually, with your application. For instructions, see "How Do I: Start Using a Packaged Control?" in the <i>WebLogic Workshop Help</i> at <a href="http://e-docs.bea.com/workshop/docs81/doc/en/workshop/guide/howdoi/howStartUsingPackagedControl.html">http://e-docs.bea.com/workshop/docs81/doc/en/workshop/guide/howdoi/howStartUsingPackagedControl.html</a>.</p> <p data-bbox="548 987 1237 1130">For ISVs and other software developers who want more information about creating custom controls, see "Creating and Packaging WebLogic Workshop Java Controls" in the <i>WebLogic Platform ISV Partners' Guide</i> at <a href="http://e-docs.bea.com/platform/docs81/isv/controls.html">http://e-docs.bea.com/platform/docs81/isv/controls.html</a>.</p>

**Table 1-2 BEA Home Directory Description (Continued)**

Component	Description
<code>sdk</code> directory	<p>Contains the software for the Java 2 SDK installed with WebLogic Platform. The SDK provides the Java run-time environment (JRE) and tools for compiling and debugging Java applications. The SDK directories include:</p> <ul style="list-style-type: none"> <li><code>jdk142_XX</code>—the 1.4.2 version of the Sun Java 2 SDK. In this directory name, <code>XX</code> indicates the version of the Sun SDK installed on your system, for example <code>jdk142_08</code>.</li> <li><code>jrockitXXX</code>—the 1.4.2 version of the BEA JRockit SDK. In this directory name, <code>XXX</code> indicates the version of the JRockit SDK installed on your system, such as <code>jrockit81sp5_142_08</code>. SDK options vary by hardware platform. BEA JRockit is installed on Windows and Linux platforms. On Windows platforms only, both the Sun and BEA JRockit SDKs are installed.</li> </ul> <p><b>Note:</b> For some UNIX platforms, the WebLogic Platform installation program does <i>not</i> include an SDK.</p>
<code>logs</code> directory	Contains a history file of installation and uninstallation for the BEA Home directory.
<code>utils</code> directory	Contains utilities that are used to support the installation of all BEA WebLogic Platform products. The <code>utils.jar</code> file contains code that supports the <code>UpdateLicense</code> utility.
<code>license.bea</code> file	<p>An XML file that contains the license keys for all the BEA WebLogic products installed in the BEA Home directory.</p> <p>Licenses are release specific. You cannot use a license from a previous release with WebLogic Platform 8.1. To convert a pre-8.1 <code>license.bea</code> file to a WebLogic Platform 8.1 <code>license.bea</code> file, see <a href="#">“Upgrading Licenses from Previous WebLogic Platform Releases” on page 6-7</a>.</p> <p>To update your <code>license.bea</code> file for additional functionality, see <a href="#">“Updating Your license.bea File” on page 6-4</a>.</p> <p><b>Note:</b> Do not edit <code>license.bea</code> file manually. Doing so may cause operating problems for the currently installed BEA products, or result in problems later when BEA products are installed for maintenance upgrades.</p>
<code>license_scale_limited.bea</code> file	An XML file that contains license keys to enable you to run a single server instance with a server capacity limited to approximately 3 percent of the full capacity of a production server. For instructions on installing this license file, see <a href="#">“Replacing Your license.bea File” on page 6-7</a> .

**Table 1-2 BEA Home Directory Description (Continued)**

Component	Description
registry.xml file	<p>A registry file that contains a persistent record of all BEA products installed on the target system. This registry contains product-related information, such as version number, service pack number, and installation directory.</p> <p><b>Note:</b> Do not edit this file manually. Doing so may cause operating problems for the currently installed BEA products, or result in installation problems when installing future BEA products or maintenance upgrades.</p>
UpdateLicense (.cmd/.sh)	<p>A command file (Windows) or a shell script (UNIX) that updates the current <code>license.bea</code> file with new license sections. The result is a merged license that contains both the existing and new license sections. For details about using the UpdateLicense utility, see <a href="#">“Updating Your license.bea File” on page 6-4</a>.</p>

## Creating Multiple BEA Home Directories

Although it is possible to create more than one BEA Home directory, we recommend that you avoid doing so. In almost all situations, a single BEA Home directory is sufficient. There may be circumstances, however, in which you prefer to maintain separate development and production environments, with a separate product stack for each. With two directories, you can update your development environment (in a BEA Home directory) without modifying the production environment until you are ready to do so.

## Choosing a Product Installation Directory

The product installation directory contains all the software components that you choose to install on your system, including program files and examples. You are prompted, during the initial installation of WebLogic Platform, to choose a product installation directory. If you accept the default, the WebLogic Platform software is installed in the following directory:

```
C:\bea\weblogic81
```

Here, `C:\bea` is the BEA Home directory and `weblogic81` is the product installation directory for the WebLogic Platform 8.1 software. However, you can specify any name and location on your system for your product installation directory; there is no requirement that you name the directory `weblogic81` or create it under the BEA Home directory.

The installation program installs the software components in a product installation directory represented by the `WL_HOME` variable. If, on your initial installation, you choose to install individual components of WebLogic Platform and not the full complement of products, and later decide to install additional components (using the same BEA Home directory), you are not prompted, during the subsequent installations, to specify a product installation directory. The installation program detects the `WL_HOME` directory and installs the additional components under in it.

A description of the WebLogic Platform directory structure is provided in [“Understanding the WebLogic Platform Product Directory Structure” on page 5-6](#).

## Generating a Verbose Installation Log

If you launch the installation from the command line or from a script, you can specify the `-log` option to generate a verbose installation log. The installation log stores messages about events that occur during the installation process, including informational, warning, error, and fatal messages. This type of file can be especially useful for silent installations.

**Note:** You may see some warning messages in the installation log. However, unless a fatal error occurs, the installation program completes the installation successfully. The installation user interface indicates the success or failure of each installation attempt, and the installation log file includes an entry indicating that the installation was successful.

## Syntax

To create a verbose log file during installation, include the `-log=full_path_to_log_file` option in the command line. For example:

```
platformXXX_win32.exe -log=C:\logs\platform_install.log
```

In this filename, `xxx` represents the version number of the software you are installing.

The path must specify a file. You cannot create a folder simply by including a name for it in a pathname; your path should specify only existing folders. If your path includes a nonexistent folder when you execute the command, the installation program does not create the log file.

## Where to Find Upgrade Information

For information about installing service packs, see [Chapter 7, “Installing Service Packs and Rolling Patches.”](#)

For information about upgrading WebLogic Platform components from previous releases, see the *Upgrade Planning Guide* at

<http://e-docs.bea.com/platform/docs81/upgrade/index.html>.

For information about migrating from a previous release of WebLogic Server to WebLogic Server 8.1, see the *WebLogic Server 8.1 Upgrade Guide* at

<http://e-docs.bea.com/wls/docs81/upgrade/index.html>.

## About Smart Update

The Smart Update feature enables you to upgrade your software quickly and easily with service packs and rolling patches.

When you start Smart Update, either from the Windows start menu or from the command line, it checks the version numbers of the products installed (associated with the current BEA Home directory), and then connects to the BEA Web site to check for available updates. For details about using Smart Update, see [Chapter 7, “Installing Service Packs and Rolling Patches.”](#)

You can also use Smart Update to revert your system installation to an earlier version of the release. For additional information, see [“Uninstalling Maintenance Upgrades Using Smart Update” on page 7-19.](#)

## Preparing to Install WebLogic Platform

# Installing WebLogic Platform Using Graphical-Mode Installation

The following sections describe how to install WebLogic Platform using a graphical user interface:

- [Before You Start](#)
- [Starting the Installation Program in Graphical Mode on Windows Platforms](#)
- [Starting the Installation Program in Graphical Mode on UNIX Platforms](#)
- [Running the Installation Program](#)
- [What's Next?](#)

## Before You Start

Before you start installing WebLogic Platform, please review the following information:

- Make sure that the hardware/software configuration on which you plan to install the product is supported by WebLogic Platform. A complete list of supported configurations can be found at <http://e-docs.bea.com/platform/suppconfigs/index.html>.
- Read [Chapter 1, “Preparing to Install WebLogic Platform,”](#) specifically, the following sections:
  - [“Installation Prerequisites”](#) on page 1-13
  - [“Choosing a Type of Installation”](#) on page 1-17
  - [“Selecting Directories for the WebLogic Platform Installation”](#) on page 1-19

**Note:** If you are installing WebLogic Platform on an operating system other than Windows, Solaris, or HP-UX, you may need to follow special installation instructions. Before launching the installation program, check “Installation Information” in *Supported*

*Configurations for WebLogic Platform 8.1 at*

[http://e-docs.bea.com/platform/suppconfigs/configs81/81\\_over/install\\_all\\_info.html](http://e-docs.bea.com/platform/suppconfigs/configs81/81_over/install_all_info.html).

- If you plan to install the TIBCO Rendezvous Control and Event Generator subcomponent of WebLogic Integration 8.1, you must install and configure TIBCO Rendezvous on your machine *before* you install WebLogic Integration 8.1.

**Note:** Information about obtaining and installing a licensed copy of TIBCO Rendezvous is available at the following URL:

<http://www.tibco.com>

By simply following the installation instructions provided by TIBCO for this product, you can install TIBCO Rendezvous correctly so that it is ready to be used later with WebLogic Integration. For information about using the TIBCO Rendezvous Control and Event Generator, see the *TIBCO Rendezvous Control and Event Generator User Guide* at the following URL:

<http://e-docs.bea.com/wli/docs81/tibcorv/index.html>

- You cannot reinstall WebLogic Platform components on top of a previously installed version of the same component. You can, however, add components to an existing installation. For example, you can install WebLogic Server during one installation, and WebLogic Integration or WebLogic Portal during separate installations. However, to reinstall the same version of one of the product components, you must first uninstall the component, as described in [Chapter 8, “Uninstalling WebLogic Platform.”](#) Alternatively, you can install the new version in another location.

If you are adding components to an existing installation of WebLogic Platform, you should shut down any running servers before starting the installation.

- All WebLogic Platform components installed in a BEA product directory (for example, `/bea/weblogic81`) must be at the same version level. If you attempt to install additional components at a higher version than those that are already installed in that directory, the installation program prompts you to upgrade your existing components before you can proceed with the installation. For details on upgrading your installation, see [Chapter 7, “Installing Service Packs and Rolling Patches.”](#)



## Starting the Installation Program in Graphical Mode on Windows Platforms

**Note:** If you are installing WebLogic Platform on a Windows system that supports more than one monitor, you must disable all but one monitor before starting the installation program.

To start the installation in graphical mode on a Windows system:

1. Log in to the Windows system.
2. If you are installing WebLogic Platform from CD-ROM, go to step 3. If you are installing from a Web download, complete the following procedure:

- a. Download the software as described in [“WebLogic Platform Distribution Methods” on page 1-11](#).
- b. Go to the directory where you downloaded the installation program and double-click the installation file:

`net_platformXXX_win32.exe` (net installer)

`platformXXX_win32.exe` (WebLogic Platform package installer)

`serverXXX_win32.exe` (WebLogic Server package installer)

In these filenames, `xxx` represents the version number of the software you are installing.

The installation program begins to install WebLogic Platform.

Proceed to [“Running the Installation Program” on page 2-7](#).

3. If you are installing WebLogic Platform from CD-ROM:
  - a. Insert the WebLogic Platform CD-ROM into the CD-ROM drive.
  - b. If the installation program does not start automatically, open Windows Explorer and double-click the CD-ROM icon.
  - c. Navigate to the folder for the Windows installation and double-click the installation file for your platform:

`platformXXX_win32.exe` (package installer)

In this filename, `xxx` represents the version number of the software you are installing.

The installation program begins to install WebLogic Platform.

- d. Proceed to [“Running the Installation Program” on page 2-7](#).

## Starting the Installation Program in Graphical Mode on UNIX Platforms

The WebLogic Platform installation program requires a Java run-time environment (JRE) to run. A JRE is bundled in the Windows installation program, and in some UNIX installation programs (those with filenames ending in `.bin`). For other UNIX platforms, the WebLogic Platform installation program does not include a JRE. Filenames for these installation programs end in `.jar`. To run the `.jar` installation programs, you must have an appropriate version of a Java 2 SDK installed on your system, and include the `bin` directory of the Java 2 SDK at the beginning of your `PATH` system variable.

**Notes:** It is important that you use an SDK because the installation process sets the `JAVA_HOME` and related variables to point to this directory. All scripts installed with WebLogic Platform use this SDK by default, including scripts to start sample applications, the Configuration Wizard, and other WebLogic development tools.

To run graphical-mode installation, your console must support a Java-based GUI. If the installation program determines that your system cannot support a Java-based GUI, it automatically starts running in console-mode. For details, see [Chapter 3, “Installing WebLogic Platform Using Console-Mode Installation.”](#)

## Starting Graphical-Mode Installation for `.bin` Installation Files

If you have an installation program for UNIX platforms with a filename that ends in `.bin`, complete the following steps to start the installation in graphical mode:

1. Log in to the target UNIX system.
2. If you are installing WebLogic Platform from CD-ROM, go to step 3. If you are installing from a Web download, complete the following procedure:
  - a. Download the software as described in [“Web Distribution” on page 1-11](#).
  - b. Go to the directory in which you downloaded the installation program.
  - c. Launch the installation by entering the following commands:

```
chmod a+x filename.bin
./filename.bin
```

Here `filename.bin` is the name of the WebLogic Platform installation program specific to your platform. Filenames for the net installer are preceded by `net_`, for example, `net_platformXXX_solaris.bin`, where `XXX` represents the version number of the software you are installing.

**Note:** You can also include the `-log=full_path_to_log_file` option in the command line to create a verbose installation log. For example:

```
java -jar pj_platformXXX_generic.jar
      -log=/home/logs/platform_install.log
```

For more information, see “[Generating a Verbose Installation Log](#)” on page 1-24.

The installation program begins to install WebLogic Platform.

- d. Proceed to “[Running the Installation Program](#)” on page 2-7.
3. If you are installing WebLogic Platform from CD-ROM:
    - a. Insert the WebLogic Platform CD-ROM into the CD-ROM drive and go to the CD-ROM directory.
    - b. Navigate to the folder that contains the installation program for your platform.
    - c. Invoke the installation procedure by entering the following command:

```
./filename.bin
```

Here `filename.bin` is the name of the WebLogic Platform installation program specific to your platform, for example `platformXXX_solaris.bin`, where `xxx` represents the version number of the software you are installing.

**Note:** You can also include the `-log=full_path_to_log_file` option in the command line to create a verbose installation log. For example:

```
java -jar pj_platformXXX_generic.jar
      -log=/home/logs/platform_install.log
```

For more information, see “[Generating a Verbose Installation Log](#)” on page 1-24.

- d. Proceed to “[Running the Installation Program](#)” on page 2-7.

## Starting Graphical-Mode Installation for .jar Installation Files

**Note:** If you are installing WebLogic Platform on an operating system other than Windows, Solaris, or HP-UX, you may need to follow special installation instructions. Before launching the installation program, check “Installation Information” in *Supported Configurations for WebLogic Platform 8.1* at

[http://e-docs.bea.com/platform/suppconfigs/configs81/81\\_over/install\\_info.html](http://e-docs.bea.com/platform/suppconfigs/configs81/81_over/install_info.html).

If you have an installation program for UNIX platforms with a filename that ends in `.jar`, follow these steps to start the installation in graphical mode:

1. Log in to the target UNIX system.
2. Add the `bin` directory of the appropriate SDK to the beginning of the `PATH` variable definition on the target system. For example:

```
PATH=JAVA_HOME/bin:$PATH
export PATH
```

Here `JAVA_HOME` represents the full path to the SDK directory.

3. Do one of the following:
  - Download the software as described in “[Web Distribution](#)” on page 1-11.
  - If you are installing from CD-ROM, insert the WebLogic Platform CD-ROM into the CD-ROM drive and go to the CD-ROM directory.

**Note:** On the CD-ROM, the installation file is located in the `weblogic_platformXXX` directory, where `XXX` represents the version number of the software you are installing.

4. Go to the directory that contains the installation file and invoke the installation procedure by entering the following command:

```
java -jar filename.jar
```

Here, `filename.jar` is the name of the WebLogic Platform installation file, for example `pj_platformXXX_generic.jar`. Filenames for the net installer are preceded by `net_`, for example, `net_pj_platformXXX_generic.jar`. In these filenames, `XXX` represents the version number of the software you are installing.

**Note:** To ensure that the hardware/software configuration on which you are installing the product is supported by WebLogic Platform, see *WebLogic Platform Supported Configurations* at

<http://e-docs.bea.com/platform/suppconfigs/index.html>.

5. Proceed to “[Running the Installation Program](#)” on page 2-7.

## Running the Installation Program

The installation program prompts you to enter specific information about your system and configuration. For instructions on responding to the prompts during installation, see the following table.

In this window . . .	Perform the following action . . .
Welcome	Click Next to proceed with the installation. You may cancel the installation at any time by clicking Exit.
BEA License Agreement	Read the BEA Software License Agreement and indicate your acceptance of the terms of the agreement by selecting Yes. To continue with the installation, you must accept the terms of the license agreement and then click Next.
Choose BEA Home Directory	Specify the BEA Home directory that will serve as the central support directory for all BEA products installed on the target system. If you already have a BEA Home directory on your system, you can select that directory (recommended) or create a new BEA Home directory. If you choose to create a new directory, the WebLogic Platform installation program automatically creates the directory for you. For details about the BEA Home directory, see <a href="#">“Choosing a BEA Home Directory” on page 1-19</a> .
Choose Install Type	<p>Select the option button for the type of installation you want to perform:</p> <ul style="list-style-type: none"> <li>• Complete—all the software components provided with WebLogic Platform or WebLogic Server, including sample files, are installed on your system. Sample domains are preconfigured for use with the PointBase database during installation allowing you to execute the samples when the installation is complete.</li> <li>• Custom—you select software components to be installed. On Windows systems, you also have a choice between installing the WebLogic Platform Node Manager as a Windows service, and not doing so.</li> </ul> <p>For additional information about the installation types, see <a href="#">“Choosing a Type of Installation” on page 1-17</a>.</p>

In this window . . .	Perform the following action . . .
Choose Components	Specify the components to be installed by selecting or clearing the appropriate check boxes.
<b>Note:</b> This window is displayed only if you selected Custom installation in the Choose Install Type window.	<p>This window displays a tree-view of all the components available for installation. In an initial installation, all components are selected.</p> <p>When you select or clear a component at the folder level, all subcomponents are selected or cleared accordingly.</p> <p>If any components are already installed on your system, the check boxes for them are grayed out.</p> <p><b>Note:</b> When you select or deselect components to install, the installation program checks for dependencies between components and automatically modifies the list of selected components accordingly. For example, if you clear the WebLogic Server component check box, the boxes for the remaining components are cleared because those components cannot be run without WebLogic Server.</p> <p>For details about the components available for installation on your system, see <a href="#">“WebLogic Platform Software Components” on page 1-5.</a></p>

In this window . . .	Perform the following action . . .
<p>Specify Download Options</p> <p><b>Note:</b> This window is displayed only if you are using the net installer.</p>	<p>Indicate your preferences for downloading the software as follows:</p> <ul style="list-style-type: none"> <li>Storage Directory—specify a storage directory to which you want to download the software components. The installation program downloads an archive file to your system for each component that you choose to install. You can choose any location on your system for these files. The directory you choose does not need to be collocated with the installation setup file, or with the installed software.</li> </ul> <p><b>Note:</b> If you have already specified a storage directory, that directory name is displayed. If you have not specified a storage directory, the installer specifies the system's temporary directory as the default. Make sure that your temporary directory has sufficient space to accommodate the archive files and the installation program. For more information about temporary space required by the installation program, see <a href="#">“Temporary Disk Space Requirements” on page 1-14</a>.</p> <ul style="list-style-type: none"> <li>Remove downloaded files when installer exits—select this option if you want the installation program to delete the downloaded files after the installation is complete. If you do not select this option, the downloaded files are saved to the storage directory you specified.</li> <li>Use HTTP Proxy—select this option if you want to use an HTTP Proxy server for the download. To use an HTTP Proxy server, you must provide the following information: <ul style="list-style-type: none"> <li>Host—enter the name or IP address of the proxy server</li> <li>Port—enter the port number of the proxy server</li> </ul> </li> <li>Use Authentication—select this option if the HTTP Proxy server you are using requires server-side authentication. If you select this option, you must provide the following information: <ul style="list-style-type: none"> <li>Username—enter a valid username required by the proxy server</li> <li>Password—enter a valid password for the user</li> </ul> </li> </ul>
<p>Downloading Archive Information</p> <p><b>Note:</b> This window is displayed only if you are using the net installer.</p>	<p>No action required. This window is displayed briefly while preliminary archive information is downloaded to your system, then the Archive Download window is displayed.</p>

In this window . . .	Perform the following action . . .
<p>Archive Download</p> <p><b>Note:</b> This window is displayed only if you are using the net installer.</p>	<ul style="list-style-type: none"> <li>Indicate whether you want to proceed with the installation automatically after the download is complete by selecting or clearing the appropriate check box. This check box is selected by default. If you clear it, you need to click Next when the download is complete to proceed with the installation.</li> <li>Click Pause if you need to interrupt the download for any reason. If you do so, the download is discontinued and the Pause button is replaced by a Resume button. Click Resume when you are ready to proceed with the download.</li> </ul>
<p>Archive Integrity Check</p> <p><b>Note:</b> This window is displayed only if you are using the net installer.</p>	<p>No action required. This window is displayed while the installation program verifies that the component archive files have been downloaded successfully.</p>
<p>Choose Product Directory</p> <p><b>Note:</b> This window is not displayed if you are performing a Custom installation and you have selected a <i>BEA_HOME</i> directory that contains previously installed WebLogic Platform components. In that case, the selected components are installed in the Product Directory you specified during the initial installation.</p>	<p>Specify the directory in which you want to install the WebLogic Platform software and click Next. You can accept the default product directory (<i>weblogic81</i>) or create a new product directory.</p> <p>For additional information, see <a href="#">“Choosing a Product Installation Directory” on page 1-23</a>.</p> <p>If you choose to create a new directory, the installation program automatically creates the directory for you.</p> <p>When you click Next, one of the following occurs:</p> <ul style="list-style-type: none"> <li>If a Node Manager is already installed as a Windows service, the installation program begins copying the components you specified to your system.</li> <li>If a Node Manager is not installed as a Windows service, the Install Node Manager as a Windows Service is displayed.</li> </ul>
<p>Install Windows Services</p> <p><b>Note:</b> This window is displayed only if you are installing on a Windows platform and you select Custom installation in the Choose Install Type window.</p>	<p>Choose whether you want to install the Windows services indicated, specifically the WebLogic Server Node Manager service. The Node Manager is used to monitor, start, and stop managed servers in a domain. For more information, see <a href="#">“Installing the Node Manager as a Windows Service” on page 1-18</a>.</p>



In this window . . .	Perform the following action . . .
Status	Read the information displayed about BEA products and services. When the installation program has finished copying the specified files to your system, click Next.
Install Complete	Specify whether you want to run the QuickStart application. QuickStart, designed to assist first-time users in evaluating, learning, and using WebLogic Platform, provides quick access to the WebLogic Platform Tour and other samples, other development tools, and the online documentation. Clear the check box for this option if you do not want to launch QuickStart.  Click Done to exit the installation program and launch QuickStart, if selected.

## What's Next?

You can start using the product immediately after installing it for the first time because, by default, WebLogic Platform uses the development license that is installed in BEA Home directory. We recommend that you use the QuickStart application to familiarize yourself with the software, take the WebLogic Platform Tour (if you installed the complete WebLogic Platform), and execute the samples provided. For additional information, see [Chapter 5, “Performing Post-Installation Tasks.”](#)

For specific information about Release 8.1 of WebLogic Platform and WebLogic Server, see the appropriate release notes:

- *BEA WebLogic Platform Release Notes* at  
<http://e-docs.bea.com/platform/docs81/relnotes/index.html>
- *BEA WebLogic Server and WebLogic Express™ Release Notes* at  
<http://e-docs.bea.com/wls/docs81/notes/index.html>

## Installing WebLogic Platform Using Graphical-Mode Installation

# Installing WebLogic Platform Using Console-Mode Installation

The following sections describe how to install WebLogic Platform using console-mode installation:

- [Before You Start](#)
- [Starting Console-Mode Installation on Windows Systems](#)
- [Starting Console-Mode Installation on UNIX Systems](#)
- [Running Console-Mode Installation](#)
- [What's Next?](#)

## Before You Start

Before you start installing WebLogic Platform, please review the following information:

- Make sure that the hardware/software configuration on which you plan to install the product is supported by WebLogic Platform. A complete list of supported configurations can be found at <http://e-docs.bea.com/platform/suppconfigs/index.html>.
- Read [Chapter 1, “Preparing to Install WebLogic Platform,”](#) specifically, the following sections:
  - “Installation Prerequisites” on page 1-13
  - “Choosing a Type of Installation” on page 1-17
  - “Selecting Directories for the WebLogic Platform Installation” on page 1-19

**Note:** If you are installing WebLogic Platform on an operating system other than Windows, Solaris, or HP-UX, you may need to follow special installation instructions. Before launching the installation program, check “Installation Information” in *Supported Configurations for WebLogic Platform 8.1* at [http://e-docs.bea.com/platform/suppconfigs/configs81/81\\_over/install\\_info.html](http://e-docs.bea.com/platform/suppconfigs/configs81/81_over/install_info.html).

- If you plan to install the TIBCO Rendezvous Control and Event Generator subcomponent of WebLogic Integration 8.1, you must install and configure TIBCO Rendezvous on your machine *before* you install WebLogic Integration 8.1.

**Note:** Information about obtaining and installing a licensed copy of TIBCO Rendezvous is available at the following URL:

<http://www.tibco.com>

By simply following the installation instructions provided by TIBCO for this product, you can install TIBCO Rendezvous correctly so that it is ready to be used later with WebLogic Integration. For information about using the TIBCO Rendezvous Control and Event Generator, see the *TIBCO Rendezvous Control and Event Generator User Guide* at the following URL:

<http://e-docs.bea.com/wli/docs81/tibcorv/index.html>

- You cannot reinstall WebLogic Platform components on top of a previously installed version of the same component. You can, however, add components to an existing installation. For example, you can install WebLogic Server during one installation, and WebLogic Integration or WebLogic Portal during a separate installation. However, to reinstall the same version of one of the product components, you must first uninstall the component, as described in [Chapter 8, “Uninstalling WebLogic Platform.”](#) Alternatively, you can install the new version in another location.

If you are adding components to an existing installation of WebLogic Platform, you should shut down any running servers before starting the installation.

- All WebLogic Platform components installed in a BEA product directory (for example, `/bea/weblogic81`) must be at the same version level. If you attempt to install additional components at a higher version than those that are already installed in that directory, the installation program prompts you to upgrade your existing components before you can proceed with the installation. For details on upgrading your installation, see [Chapter 7, “Installing Service Packs and Rolling Patches.”](#)

## Starting Console-Mode Installation on Windows Systems

**Note:** If you are installing WebLogic Platform on a Windows system that supports more than one monitor, you must disable all but one monitor before starting the installation program.

To start the installation in console mode on a Windows system:

1. Log in to the target Windows system.
2. Open an MS-DOS command prompt window.
3. If you are installing WebLogic Platform from CD-ROM, go to step 4. If you are installing WebLogic Platform from a Web download, complete the following procedure:
  - a. Download the software as described in [“WebLogic Platform Distribution Methods” on page 1-11](#).
  - b. Go to the directory in which you downloaded the installation program.
  - c. Launch the installation by entering one of the following commands:

```
net_platformXXX_win32.exe -mode=console (net installer)
```

```
platformXXX_win32.exe -mode=console (WebLogic Platform package installer)
```

```
serverXXX_win32.exe -mode=console (WebLogic Server package installer)
```

In these filenames, *xxx* represents the version number of the software you are installing.

**Note:** You can also include the `-log=full_path_to_log_file` option in the command line to create a verbose installation log. For example:

```
platformXXX_win32 -mode=console -log=C:\logs\platform_install.log
```

In this example, *xxx* represents the version number of the software you are installing. For more information, see [“Generating a Verbose Installation Log” on page 1-24](#).

The installation program begins to install WebLogic Platform.

- d. Proceed to [“Running Console-Mode Installation” on page 3-7](#).
4. If installing WebLogic Platform from CD-ROM:
  - a. Insert the WebLogic Platform CD-ROM into the CD-ROM drive.
  - b. Open an MS-DOS command prompt window.
  - c. Go to the CD-ROM directory and navigate to the folder for the installation program for your platform.

- d. Invoke the installation procedure by entering the following command:

```
platformXXX_win32.exe -mode=console (package installer)
```

In this filename, `xxx` represents the version number of the software you are installing.

**Note:** You can also include the `-log=full_path_to_log_file` option in the command line to create a verbose installation log. For example:

```
platformXXX_win32.exe -mode=console  
-log=D:\logs\platform_install.log
```

In this example, `xxx` represents the version number of the software you are installing. For more information, see [“Generating a Verbose Installation Log” on page 1-24](#).

- e. Proceed to [“Running Console-Mode Installation” on page 3-7](#).

## Starting Console-Mode Installation on UNIX Systems

The WebLogic Platform installation program requires a Java run-time environment (JRE) to run. A JRE is bundled in the Windows installation program, and in some UNIX installation programs (those with filenames ending in `.bin`). For other UNIX platforms, the WebLogic Platform installation program does not include the JRE. Filenames for these installation programs end in `.jar`. To run the `.jar` installation programs, you must have an appropriate version of a Java 2 SDK installed on your system, and include the `bin` directory of the Java 2 SDK at the front of the `PATH` system variable.

**Note:** It is important that you use an SDK because the installation process sets the `JAVA_HOME` and related variables to point to this directory. All scripts installed with WebLogic Platform use this SDK by default, including scripts to start sample applications, the Configuration Wizard, and other WebLogic development tools.

## Starting Console-Mode Installation for .bin Installation Files

If you have an installation program for UNIX platforms with a filename that ends in `.bin`, complete the following steps to start the installation in console mode:

1. Log in to the target UNIX system.
2. If you are installing WebLogic Platform from CD-ROM, go to step 3. If you are installing WebLogic Platform from a Web download, complete the following procedure:
  - a. Download the software as described in [“Web Distribution” on page 1-11](#).
  - b. Go to the directory where you downloaded the installation program.

- c. Launch the installation by entering the following commands:

```
chmod a+x filename.bin
./filename.bin -mode=console
```

Here *filename.bin* is the name of the WebLogic Platform installation program specific to your platform.

Filenames for the net installer are preceded by *net\_*, for example, *net\_platformXXX\_solaris.bin*, where *XXX* represents the version number of the software you are installing.

**Note:** You can also include the `-log=full_path_to_log_file` option in the command line to create a verbose installation log. For example:

```
platformXXX_solaris.bin -mode=console
-log=/home/logs/platform_install.log
```

In this example, *XXX* represents the version number of the software you are installing. For more information, see [“Generating a Verbose Installation Log” on page 1-24](#).

- d. Proceed to [“Running Console-Mode Installation” on page 3-7](#).

3. If you are installing WebLogic Platform from CD-ROM:

- a. Insert the WebLogic Platform CD-ROM into the CD-ROM drive.
- b. Go to the CD-ROM directory and navigate to the folder for the installation program for your platform.
- c. Launch the installation procedure by entering the following commands:

```
chmod a+x filename.bin
./filename.bin -mode=console
```

Here, *filename.bin* is the name of the WebLogic Platform installation program specific to your platform, for example *platformXXX\_solaris.bin*, where *XXX* represents the version number of the software you are installing.

**Note:** You can also include the `-log=full_path_to_log_file` option in the command line to create a verbose installation log. For example:

```
./platformXXX_solaris.bin -mode=console
-log=/home/logs/platform_install.log
```

For more information, see [“Generating a Verbose Installation Log” on page 1-24](#).

- d. Proceed to [“Running Console-Mode Installation” on page 3-7](#).

## Starting Console-Mode Installation for .jar Installation Files

**Note:** If you are installing WebLogic Platform on an operating system other than Windows, Solaris, or HP-UX, you may need to follow special installation instructions. Before launching the installation program, check “Installation Information” in *Supported Configurations for WebLogic Platform 8.1* at

[http://e-docs.bea.com/platform/suppconfigs/configs81/81\\_over/install\\_info.html](http://e-docs.bea.com/platform/suppconfigs/configs81/81_over/install_info.html).

If you have an installation program for UNIX platforms with a filename that ends in `.jar`, follow these steps to start the installation in console mode:

1. Log in to the target UNIX system.
2. Add the `bin` directory of the appropriate SDK to the beginning of the `PATH` variable definition on the target system. For example:

```
PATH=JAVA_HOME/bin:$PATH
export PATH
```

Here `JAVA_HOME` represents the full path to the SDK directory.

3. Do one of the following:
  - Download the software as described in “Web Distribution” on page 1-11.
  - If you are installing from CD-ROM, insert the WebLogic Platform CD-ROM into the CD-ROM drive and go to the CD-ROM directory.

**Note:** To ensure that the hardware/software configuration on which you are installing the product is supported by WebLogic Platform, see *WebLogic Platform Supported Configurations* at

<http://e-docs.bea.com/platform/suppconfigs/index.html>.

4. Go to the directory that contains the installation file and invoke the installation procedure by entering the following command:

```
java -jar filename.jar -mode=console
```

Here, `filename.jar` is the name of the WebLogic Platform installation file, for example `pj_platformXXX_generic.jar`. Filenames for the net installer are preceded by `net_`, for example, `net_pj_platformXXX_generic.jar`. In these filenames, `XXX` represents the version number of the software you are installing.

**Note:** You can also include the `-log=full_path_to_log_file` option in the command line to create a verbose installation log. For example:



```
java -jar pj_platformXXX_generic.jar -mode=console
      -log=/home/logs/platform_install.log
```

For more information, see [“Generating a Verbose Installation Log” on page 1-24](#).

5. Proceed to [“Running Console-Mode Installation” on page 3-7](#).

## Running Console-Mode Installation

To complete the console-mode installation process, respond to the prompts in each section by entering the number associated with your choice or by pressing Enter to accept the default. To exit the installation process, enter `exit` (or `x`, for short) in response to any prompt. To review or change your selection, enter `previous` (or `p`, for short) at the prompt. To proceed to the following window, enter `next` (or `n`, for short).

**Note:** The sample console text and directory pathnames in this section use Windows conventions (backslashes) for pathnames, for example `C:\bea\weblogic81`. When entering pathnames on a UNIX system, use the UNIX convention (forward slashes) in pathnames, for example, `/home1/bea/weblogic81`.

The following procedure steps you through the installation program. Use this procedure after you have started the installation program in console mode as described in the previous sections.

1. At the Welcome prompt, type `next` (or `n` for short) or press Enter to continue with the installation process.

The BEA Systems License Agreement prompt is displayed.

2. Read the Agreement and indicate your acceptance or rejection of its terms by doing one of the following at the prompt:
  - Type `1` to indicate your agreement with the terms of the license and proceed with the installation. To review the entire agreement, press Enter or type `Down` several times. Type `Up` to scroll back through sections previously displayed.
  - Type `2` if you do not agree with the terms of the license. If you type `2`, the installation process terminates.

The Choose BEA Home directory prompt is displayed.

3. Specify the BEA Home directory that will serve as the central support directory for all BEA products installed on the target system. For details about the BEA Home directory, see [“Choosing a BEA Home Directory” on page 1-19](#).

The installation program displays the following prompt:

## Installing WebLogic Platform Using Console-Mode Installation

Choose BEA Home Directory:

-----

\*BEA home choice

1|Create a new BEA Home [C:\bea]  
->2|Use an existing BEA Home [D:\beahome1]

Enter index number to select OR [Exit] [Previous] [Next]>

**Note:** Instead of typing complete words when you want to enter [Exit], [Previous], and [Next], you can use the following one-letter shortcuts: x, p, and n, respectively.

Do one of the following:

- To use an existing BEA Home directory, type 2 or next (or n for short), or press Enter. If you have more than one BEA Home directory on your system, an additional prompt will display the directories. Type the number associated with the desired BEA Home directory.
- To create a new BEA Home directory, type 1, then at the prompt, enter the *full path* of the BEA Home directory, for example C:\beahome2. If you specify a directory that does not exist, the installation program creates it for you.

Whether you accept the existing BEA Home directory or choose to create a new BEA Home directory, you are prompted to confirm your selection, as shown in the following sample:

Choose BEA Home Directory:

-----

\*BEA home choice

->1|Yes, Use this BEA home directory [C:\bea]  
2|No, return to BEA home directory selection

Enter index number to select OR [Exit] [Previous] [Next]>

On the command line, type 1 or press Enter to accept your selection. Otherwise, type 2 to return to the Choose BEA Home Directory panel where you can modify your entry.

After you have selected your BEA Home directory and confirmed your selection, the Choose Install Type prompt is displayed.

4. Specify the type of installation you want to perform by entering the number associated with the install type, as shown in the following text:

Choose Install Type:

-----

->1|Complete  
|Install the complete BEA WebLogic Platform.

```

2|Custom Installation
  |Choose software components to install and perform optional
  |configuration.

```

Enter index number to select OR [Exit] [Previous] [Next] >

Do one of the following:

- Type 1 or press Enter to choose a Complete installation.

If you are using the net installer (filename preceded by `net_`), the Specify Download Options prompt is displayed. Go to step 6.

If you are installing from CD-ROM or using the package installer, the Choose Product Directory prompt is displayed. Go to step 7.

- Type 2 to choose a Custom installation. The Choose Components prompt is displayed.

For more information about typical and custom installations, see [“Choosing a Type of Installation” on page 1-17](#).

5. Select the components you want to install. The available components are displayed as follows:

Choose Components to install:

-----

```

Release 8.1.x.0
+----WebLogic Server [1] v
|   +----Server [1.1] v
|   +----Server Examples [1.2] v
+----WebLogic Workshop [2] v
|   +----Workshop Runtime Framework [2.1] v
|   +----WebLogic Workshop Application Developer Edition [2.2] v
|   +----Workshop Samples [2.3] v
+----WebLogic Integration [3] v
|   +----Integration Server [3.1] v
|   +----WebLogic Workshop Integration Extension [3.2] v
|   +----Integration Examples [3.3] v
|   +----BPEL Import and Export Tools [3.4]
|   +----TIBCO Rendezvous(TM) Control and Event Generator [3.5]
+----WebLogic Portal [4] v
|   +----Portal Server [4.1] v
|   +----WebLogic Workshop Portal Extension [4.2] v
|   +----Portal Examples [4.3] v
+----Platform Samples and Utilities [5] v
|   +----Platform Tour [5.1] v

```

Enter number exactly as it appears in brackets to toggle selection OR  
[Exit] [Previous] [Next] >

**Note:** If you are using the WebLogic Server installer, only the WebLogic Server and WebLogic Workshop components are displayed.

Selected components are installed by default, as indicated by a symbol at the end of each line: an **x** on UNIX systems or check mark on Windows systems. If a component, such as the **BPEL Import and Export Tools**, is not selected, then it will not be installed on your system. To select a component to be installed, type the numeric code for the component on the command line. To deselect a component, type the numeric code for the component on the command line exactly as it appears within the brackets. For example, if you do not want to install the **Server Examples** for WebLogic Server, type **1.2** on the command line.

**Note:** The word **Installed** is shown in brackets for any components you have already installed on your system.

When you are finished selecting components, press **Enter** or type **next** (or **n** for short). You are prompted to confirm your selection. On the command line, type **1** or press **Enter** to accept your selection. Otherwise, type **2** to return to the **Choose Components** panel where you can modify your selections.

**Note:** When you select or deselect components to install, the installation program checks for dependencies between components and automatically modifies the list of selected components. For example, if you deselect the **WebLogic Server** component, the remaining components are also deselected, since they require the **WebLogic Server** to run.

If you are using the package installer, the **Choose Product Directory** prompt is displayed. Go to step 7.

If you are using the **net** installer (installation program filenames beginning with **net\_**), the **Specify Download Options** prompt is displayed.

6. Indicate your preferences for downloading the software. The installation program prompts you to select one of the following options:

SPECIFY DOWNLOAD OPTIONS

- 1- Modify Storage directory (c:\tmp)
- 2- Modify Remove download files after installation (No)
- 3- Modify Proxy Host (none)
- 4- Modify Proxy Port (none)
- 5- Modify Username (none)
- 6- Modify Password (none)

Enter a number or [Exit] [Previous] [Next] >

**Note:** If you have previously installed WebLogic Platform and specified a storage directory during the installation process, the full pathname for that directory is displayed as the default. If you have not specified a storage directory, the installer specifies the system's temporary directory as the default. Make sure that your temporary directory has sufficient space to accommodate the archive files and the installation program. For more information about temporary space required by the installation program, see [“Temporary Disk Space Requirements” on page 1-14](#).

To accept the defaults, type `next` (or `n` for short) or press Enter. If you have not specified a download storage directory in a previous installation and you want to save the files to be downloaded, you need to specify a directory before you can proceed with the installation.

To modify any of the options, do the following:

- Type `1` to specify a storage directory to which you want to download the software components. When prompted, type the full pathname for the desired directory. If the directory does not exist, the installation program creates it for you.
- Type `2` if you want the downloaded files deleted after the installation is complete. If you do so, the download options are displayed again, and the `Modify Remove download files after installation` option is set to `Yes`. If you accept the default for this option (`No`), the downloaded files are saved in the storage directory you specified.
- Indicate whether you want to use an HTTP Proxy server for the download by providing values for the `Modify Host` and `Modify Port` options as follows:
  - Type `3` to specify a host. At the prompt, enter the name or IP address of the proxy server.
  - Type `4` to specify a port. At the prompt, enter the port number of the proxy server.
- Specify the username and password required by the HTTP Proxy server, if required, as follows:
  - Type `5` to specify a username. At the prompt, enter a valid username for the proxy server.
  - Type `6` to specify a password. At the prompt, enter a valid password for the user.

For additional information about downloading the software, see [“Web Distribution” on page 1-11](#).

After you indicate your preferences, the files begin downloading to the specified storage directory. When the download is complete, the installation program verifies that the component archive files downloaded successfully. If the installation program cannot verify the integrity of the download, the following message is displayed:

```
The required installation files could not be verified.You
may download them from BEA or select different components.
```

When the verification is complete, the Choose Product Directory prompt is displayed.

7. Specify the directory in which you want to install the WebLogic Platform software. Select the default product directory (*bea\_home\weblogic81*) or create a new product directory.

If you specify a new directory, the installation program automatically creates it for you.

The choices displayed in this section are as follows:

Choose Product Directory:

-----

Product Installation Directory= [C:\bea\weblogic81]

Input new Product Installation Directory OR [Exit] [Previous] [Next]>

Do one of the following:

- Press Enter or type *next* (or *n* for short) to accept the current selection.
- Enter the *full path* to the directory in which you want to install the WebLogic Platform software and press Enter.

You are prompted to confirm your selection as shown in the following text:

Choose Product Directory:

-----

->1| Yes, use this product directory [C:\bea\weblogic81]  
2| No, select another product directory

Enter index number to select OR [Exit] [Previous] [Next]>

Verify that your entry is correct, then type 1 or press Enter to proceed with the installation. Otherwise, type 2 to return to the Choose Product Directory panel where you can modify your entry.

8. If you are installing on a Windows platform, you have not previously installed a Node Manager as a Windows service, and you are performing a custom installation, the Install Node Manager as a Windows Service panel is displayed. The Node Manager is used to monitor, start, and stop the managed servers in a domain.

The following text is displayed:

Install Node Manager as a Windows Service

->1 - Yes, install now.  
2 - No, do not install now. See product documentation for post-install registration of Node Manager as a Windows Service.

Enter a number or [Exit] [Previous] [Next]>

Enter 1 or press Enter to install the Node Manager as a Windows Service. See [“Installing the Node Manager as a Windows Service” on page 1-18](#) for more information. Enter 2 if you do not want to install the Node Manager as a Windows service.

At this point, the installation program installs the files to the directory you specified.

**Note:** It is normal for the installation program to pause for a fairly long time, especially toward the end. The installation program is still working when this occurs.

9. Press Enter or type `Exit` to exit the installation program.

## What's Next?

You can start using the product immediately after installing it for the first time because, by default, WebLogic Platform uses the development license that is installed in BEA Home directory. We recommend that you use the QuickStart application to familiarize yourself with the software, take the WebLogic Platform Tour (if you installed the complete WebLogic Platform), and execute the samples provided. For additional information, see [Chapter 5, “Performing Post-Installation Tasks.”](#)

**Note:** QuickStart is not invoked automatically for console or silent-mode installations. You can launch QuickStart from the Start Menu (Windows), or from the command line (Windows and UNIX.) For instructions, see [“Using QuickStart” on page 5-1](#).

For specific information about Release 8.1 of WebLogic Platform and WebLogic Server, see the appropriate release notes:

- *BEA WebLogic Platform Release Notes* at <http://e-docs.bea.com/platform/docs81/relnotes/index.html>
- *BEA WebLogic Server and WebLogic Express™ Release Notes* at <http://e-docs.bea.com/wls/docs81/notes/index.html>

## Installing WebLogic Platform Using Console-Mode Installation



# Installing WebLogic Platform Using Silent-Mode Installation

The following sections describe how to install WebLogic Platform using the installation program in silent mode on both Windows and UNIX systems:

- [What Is Silent-Mode Installation?](#)
- [Before You Start](#)
- [Using Silent-Mode Installation: Main Steps](#)
- [Creating a Silent-Mode Installation Template File](#)
- [Sample Template File for Silent-Mode Installation](#)
- [Starting the Silent-Mode Installation Process on a Windows System](#)
- [Starting the Silent-Mode Installation Process on a UNIX System](#)
- [Returning Exit Codes to the Console](#)
- [What's Next?](#)

## What Is Silent-Mode Installation?

Silent-mode installation is a way of setting installation configurations only once and then using those configurations to duplicate the installation on many machines. During installation in silent mode, the installation program reads the settings for your configuration from an XML file that you create prior to beginning the installation. The installation program does not display any configuration options during the installation process. Silent-mode installation works on both Windows and UNIX systems.

With previous releases of WebLogic Platform, you have the option of running the Configuration Wizard as part of the silent installation process. In WebLogic Platform 8.1, the Configuration Wizard cannot be run, automatically, with the WebLogic Platform installation program; it must be run separately. However, you can create a simple shell script or command file that sequentially runs silent mode installation and silent mode configuration. For more information about running the Configuration Wizard in silent mode, see *Creating WebLogic Configurations Using the Configuration Wizard* at <http://e-docs.bea.com/platform/docs81/configwiz/index.html>.

**Note:** Using silent-mode installation implies that you consent to the BEA License Agreement. You neither see a copy of the BEA Software License Agreement nor have any means of accepting the terms of the agreement.

The instructions in this section are based on the assumption that you have already acquired the installation program, from either CD or the Web. For more information, see “[WebLogic Platform Distribution Methods](#)” on page 1-11.

## Before You Start

Before you start to install WebLogic Platform, please review the following information:

- Make sure that the hardware/software configuration on which you plan to install the product is supported by WebLogic Platform. For a complete list of supported configurations, see *WebLogic Platform Supported Configurations* at <http://e-docs.bea.com/platform/suppconfigs/index.html>.
- Be sure to read [Chapter 1, “Preparing to Install WebLogic Platform.”](#)
- If you are installing WebLogic Platform on an operating system other than Windows, Solaris, or HP-UX, you may need to follow special installation instructions. Before launching the installation program, check “Installation Information” in *Supported Configurations for WebLogic Platform 8.1* at [http://e-docs.bea.com/platform/suppconfigs/configs81/81\\_over/install\\_info.html](http://e-docs.bea.com/platform/suppconfigs/configs81/81_over/install_info.html).
- If you plan to install the TIBCO Rendezvous Control and Event Generator subcomponent of WebLogic Integration 8.1, you must install and configure TIBCO Rendezvous on your machine *before* you install WebLogic Integration.

**Note:** Information about obtaining and installing a licensed copy of TIBCO Rendezvous is available at the following URL:

<http://www.tibco.com>

By simply following the installation instructions provided by TIBCO for this product, you can install TIBCO Rendezvous correctly so that it is ready to be used later with WebLogic Integration. For information about using the TIBCO Rendezvous Control and Event Generator, see the *TIBCO Rendezvous Control and Event Generator User Guide* at the following URL:

<http://e-docs.bea.com/wli/docs81/tibcorv/index.html>

## Using Silent-Mode Installation: Main Steps

The silent-mode installation process has two primary steps:

1. Create a template file that defines the configuration settings normally entered by a user during an interactive installation process, such as graphical-mode or console-mode installation. For example, values for the BEA Home directory, the product directory, and the components to be installed are supplied in a silent-mode template file.

For a detailed procedure, see [“Creating a Silent-Mode Installation Template File” on page 4-4](#).

For a sample template file, see [“Sample Template File for Silent-Mode Installation” on page 4-7](#).

2. Start the silent-mode installation process using the values specified in the template file.

For a detailed procedure, see [“Starting the Silent-Mode Installation Process on a Windows System” on page 4-8](#) or [“Starting the Silent-Mode Installation Process on a UNIX System” on page 4-8](#).

## Important Considerations for Silent-Mode Installation

When you are performing an installation in silent mode, keep in mind the following considerations:

- You must use the package installer for silent-mode installation. Silent-mode installation is not supported with the net installer. Filenames for the net installer version of the installation program are preceded by `net_`, for example `net_platformXXX_solaris.bin`, where `XXX` represents the version number of the software you are installing. Do not attempt to use installation programs with filenames beginning with `net_` for silent-mode installation.
- Silent-mode installation requires the same amount of temporary disk space and uses the same temporary storage directories as a standard installation. For more information, see [“Temporary Disk Space Requirements” on page 1-14](#). The installation program does not alert you if there is not enough space in the temporary directory.
- A silent-mode installation takes the same amount of time as a standard installation. At the beginning of a silent-mode installation, an initial installation program window or message is displayed briefly, indicating that the installation has started. No messages are displayed to indicate that the installation is in progress or has completed successfully. You can, however,

specify that an exit code be displayed to the console if you initiate the installation using a script. For more information, see [“Returning Exit Codes to the Console” on page 4-10](#).

- Incorrect entries in the `silent.xml` file can cause installation failures. To help you determine the cause of a failure, we recommend that you create a log file when you start the installation. For more information, see [“Generating a Verbose Installation Log” on page 1-24](#).
- The XML definition (`<?xml version="1.0" encoding="UTF-8"?>`) must be at the very beginning of the `silent.xml` template file. There cannot be any spaces or line breaks before the XML definition.
- You cannot reinstall WebLogic Platform components on top of a previously installed version of the same component. You can, however, add components to an existing installation. For example, you can install WebLogic Server during one installation, and WebLogic Integration or WebLogic Portal during a separate installation. However, to reinstall the same version of one of the product components, you must first uninstall the component, as described in [Chapter 8, “Uninstalling WebLogic Platform,”](#) or install in another location.

## Creating a Silent-Mode Installation Template File

When you install WebLogic Platform in silent mode, the installation program uses an XML file (`silent.xml`) to determine which installation options should be implemented. Therefore, before you can run the installation program in silent mode, you must first create a `silent.xml` file in which you specify the installation options that you want to have invoked.

**Note:** Incorrect entries in the `silent.xml` file can cause installation failures. To help you determine the cause of a failure, we recommend that you create a log file when you start the installation.

To create a template file for use in a silent-mode installation, follow these steps:

1. In a supported browser, display the sample template file for silent-mode installation: `silent.xml`. This file is available at <http://e-docs.bea.com/platform/docs81/install/scripts/silent.xml>.  
The file is also presented later in this chapter. See [“Sample Template File for Silent-Mode Installation” on page 4-7](#).
2. In the popup window that is displayed, choose **File**→**Save As...**
3. Specify `silent.xml` as the file name and save the file in the directory containing the WebLogic Platform installation program.

**Note:** The first line of the template file must contain the following XML definition: `<?xml version="1.0" encoding="UTF-8"?>`. The XML definition must appear at the beginning of the first line of the file; no spaces or line breaks are allowed before it.

4. In the `silent.xml` file that you saved on your system, modify the values for the keywords shown in [Table 4-1](#) to reflect your configuration.

**Note:** You must follow XML guidelines for characters when modifying values. That is, you cannot use characters reserved for use in XML, such as `<`, `>`, `[`, and `]`.

**Table 4-1 Silent-Mode Installation Template Values**

For this data-value name . . .	Enter the following value . . .
BEAHOME	The full pathname for the BEA Home directory of your choice. For details about the BEA Home directory, see <a href="#">“Choosing a BEA Home Directory” on page 1-19</a> .
USER_INSTALL_DIR	The full pathname for the directory in which you want to install the WebLogic Platform software. For details, see <a href="#">“Choosing a Product Installation Directory” on page 1-23</a> .
INSTALL_NODE_MANAGER_SERVICE (Windows platforms only)	<code>yes</code> to install the WebLogic Server Node Manager as a Windows service. See <a href="#">“Installing the Node Manager as a Windows Service” on page 1-18</a> . <code>no</code> to skip the installation of the WebLogic Server Node Manager as a Windows service.

Table 4-1 Silent-Mode Installation Template Values (Continued)

For this data-value name . . .	Enter the following value . . .
COMPONENT_PATHS	<p>Specify the components and subcomponents you want to install on your system:</p> <ul style="list-style-type: none"><li>• To install WebLogic Server, use the following values: WebLogic Server Server Server Examples</li><li>• To install WebLogic Workshop, use the following values: WebLogic Workshop Workshop Runtime Framework WebLogic Workshop Application Developer Edition Workshop Samples</li><li>• To install WebLogic Integration, use the following values: WebLogic Integration Integration Server WebLogic Workshop Integration Extension Integration Examples BPEL Import and Export Tools TIBCO Rendezvous Control (TM) and Event Generator</li><li>• To install WebLogic Portal, use the following values: WebLogic Portal Portal Server WebLogic Workshop Portal Extension Portal Examples</li><li>• To install the WebLogic Platform Tour, use the following values: Platform Samples and Utilities Platform Tour</li></ul> <p>For additional information about entering these values, see <a href="#">“Guidelines for Component Selection” on page 4-7</a>.</p> <p><b>Note:</b> When using the WebLogic Server only installer, you can specify the WebLogic Server and WebLogic Workshop components only.</p>

## Guidelines for Component Selection

Use the following guidelines when you specify values for the `COMPONENT_PATHS` data-value name:

- When you specify a component, all subcomponents are also installed. For example, the following entry installs the Integration server, the Integration extension, and the examples:

```
<data-value name="COMPONENT_PATHS" value="WebLogic Integration" />
```

- To install multiple components, separate components with a bar (|). Do not leave a space before or after the bar. For example, to install WebLogic Server, WebLogic Workshop, and their subcomponents, enter the following line in the file:

```
<data-value name="COMPONENT_PATHS" value="WebLogic Server|WebLogic Workshop" />
```

- To specify subcomponents, you must specify a component/subcomponent combination for each entry. For example:

```
<data-value name="COMPONENT_PATHS" value="WebLogic Portal/Portal Examples|WebLogic Portal/WebLogic Workshop Portal Extension" />
```

- If you do not include the `COMPONENT_PATHS` data-value name in the `silent.xml` file, the complete WebLogic Platform is installed.

**Note:** The installer performs dependency checking to ensure that all required components are installed. For more information, see [“Dependencies Between Installable Components” on page 1-10](#).

## Sample Template File for Silent-Mode Installation

```
<?xml version="1.0" encoding="UTF-8"?>

<!-- Silent installer option: -mode=silent -silent_xml=/home/me/silent.xml -->

<domain-template-descriptor>

<input-fields>
  <data-value name="BEAHOME" value="C:\bea" />
  <data-value name="USER_INSTALL_DIR" value="C:\bea\weblogic81" />
  <data-value name="INSTALL_NODE_MANAGER_SERVICE" value="no" />
  <data-value name="COMPONENT_PATHS" value="WebLogic Server|WebLogic Workshop|WebLogic Integration|WebLogic Portal" />
</input-fields>
</domain-template-descriptor>
```

## Starting the Silent-Mode Installation Process on a Windows System

To start the silent-mode installation process on a Windows system, follow these steps:

1. Log in to the Windows system.

If you want to install WebLogic Platform as a Windows service, you must have Administrator privileges. For information about installing WebLogic Platform as a Windows service, see "Setting Up a WebLogic Server Instance as a Windows Service" in *Configuring and Managing WebLogic Server* at

<http://e-docs.bea.com/wls/docs81/adminguide/winservice.html>.

2. Open an MS-DOS command prompt window.
3. Go to the directory that contains the installation file and launch the installation procedure by entering the following command:

```
filename.exe -mode=silent -silent_xml=path_to_silent.xml
```

Here *filename.exe* is the name of the WebLogic Platform installation file, and *path\_to\_silent.xml* is the *full* pathname of the *silent.xml* template file.

**Note:** You can also include the `-log=full_path_to_log_file` option in the command line to create a verbose installation log. For example:

```
platformXXX_win32.exe -mode=silent -silent_xml=D:\silent.xml  
-log=D:\logs\platform_install.log
```

In this example, *xxx* represents the version number of the software you are installing. For more information, see [“Generating a Verbose Installation Log” on page 1-24](#).

## Starting the Silent-Mode Installation Process on a UNIX System

The WebLogic Platform installation program requires a Java run-time environment (JRE) to run. A JRE is bundled in the Windows installation program, and in some UNIX installation programs (those with filenames ending in `.bin`). For other UNIX platforms, the WebLogic Platform installation program does not include the JRE. Filenames for these installation programs end in `.jar`. To run the `.jar` installation programs, you must have an appropriate version of a Java 2 SDK installed on your system, and include the `bin` directory of the Java 2 SDK at the beginning of your `PATH` system variable.



**Note:** It is important that you use an SDK because the installation process sets the `JAVA_HOME` and related variables to point to this directory. All scripts installed with WebLogic Platform use this SDK by default, including scripts to start sample applications, the Configuration Wizard, and other WebLogic development tools.

## Starting Silent-Mode Installation for .bin Installation Files

**Note:** Incorrect entries in the `silent.xml` file can cause installation failures. To help you determine the cause of a failure, we recommend that you create a log file when you start the installation.

To start the silent-mode installation process using installation files with names ending in `.bin`, follow these steps:

1. Log in to the target UNIX system.
2. Go to the directory that contains the installation file.
3. Launch the installation by entering the following command:

```
chmod a+x filename
./filename.bin -mode=silent -silent_xml=/path_to_silent.xml
```

Here `filename.bin` is the name of the WebLogic Platform installation file, and `path_to_silent.xml` is the *full* pathname of the `silent.xml` template file.

**Note:** You can also include the `-log=full_path_to_log_file` option in the command line to create a verbose installation log. For example:

```
platformXXX_solaris.bin -mode=silent -silent_xml=/home/silent.xml
-log=/home/logs/platform_install.log
```

For more information, see [“Generating a Verbose Installation Log” on page 1-24](#).

## Starting Silent-Mode Installation for .jar Installation Files

**Note:** Incorrect entries in the `silent.xml` file can cause installation failures. To help you determine the cause of a failure, we recommend that you create a log file when you start the installation.

To start the silent-mode installation process for installation files with names ending in `.jar`, follow these steps:

1. Log in to the target UNIX system.
2. Add the `bin` directory of the appropriate SDK to the beginning of the `PATH` variable definition on the target system. For example:

```
PATH=JAVA_HOME/bin:$PATH
export PATH
```

Here `JAVA_HOME` is the full path of the SDK directory.

3. Go to the directory that contains the installation file.

**Note:** To ensure that the hardware/software configuration on which you are installing the product is supported by WebLogic Platform, see *WebLogic Platform Supported Configurations* at

<http://e-docs.bea.com/platform/suppconfigs/index.html>.

4. Launch the installation by entering the following command:

```
java -jar filename.jar -mode=silent
-silent_xml=/path_to_silent.xml
```

Here, `filename.jar` is the name of the WebLogic Platform installation file (for example `pj_platformXXX_generic.jar`, where `XXX` represents the version number of the software you are installing) and `path_to_silent.xml` is the *full* path to the `silent.xml` template file.

**Note:** You can also include the `-log=full_path_to_log_file` option in the command line to create a verbose installation log. For example:

```
pj_platformXXX_generic.jar -mode=silent
-silent_xml=/home/silent.xml -log=/home/logs/platform_install.log
```

For more information, see “[Generating a Verbose Installation Log](#)” on page 1-24.

## Returning Exit Codes to the Console

When run in silent mode, the installation program generates exit codes that indicate the success or failure of the installation. These exit codes are shown in the following table.

Code	Description
0	Installation completed successfully

Code	Description
-1	Installation failed due to a fatal error
-2	Installation failed due to an internal XML parsing error

If you are launching the silent-mode installation process from a script, you can choose to have these exit codes displayed to the console. [Listing 4-1](#) provides a sample command file that invokes the WebLogic Platform installation in silent mode and echoes the exit codes to the console from which the script is executed.

#### Listing 4-1 Sample Command File Displaying Silent Mode Exit Codes

```
rem Execute the installer in silent mode
@echo off
platform814_win32.exe -mode=silent -silent_xml=C:\downloads\silent.xml
-log=C:\logs\814platform_silent.log

@rem Return an exit code to indicate success or failure of installation
set exit_code=%ERRORLEVEL%

@echo.
@echo Exitcode=%exit_code%
@echo.
@echo Exit Code Key
@echo -----
@echo 0=Installation completed successfully
@echo -1=Installation failed due to a fatal error
@echo -2=Installation failed due to an internal XML parsing error
@echo.
```

## What's Next?

You can start using the product immediately after installing it for the first time because, by default, WebLogic Platform uses the development license that is installed in BEA Home directory. We recommend that you use the QuickStart application to familiarize yourself with the software, take the WebLogic Platform Tour (if you installed the complete WebLogic Platform), and execute the samples provided. For additional information, see [Chapter 5, “Performing Post-Installation Tasks.”](#)

**Note:** QuickStart is not invoked automatically for console or silent-mode installations. You can launch QuickStart from the Start Menu (Windows), or from the command line (Windows and UNIX.) For instructions, see [“Using QuickStart” on page 5-1.](#)

For specific information about Release 8.1 of WebLogic Platform and WebLogic Server, see the appropriate release notes:

- *BEA WebLogic Platform Release Notes* at <http://e-docs.bea.com/platform/docs81/relnotes/index.html>
- *BEA WebLogic Server and WebLogic Express™ Release Notes* at <http://e-docs.bea.com/wls/docs81/notes/index.html>

# Performing Post-Installation Tasks

The following sections describe the tasks you may need to perform after installing and licensing your WebLogic Platform software:

- [Using QuickStart](#)
- [Using an Alternate Database](#)
- [Using the TIBCO Rendezvous Event Generator](#)
- [Determining Which SDK Version You Are Using](#)
- [Understanding the WebLogic Platform Windows Shortcuts](#)
- [Understanding the WebLogic Platform Product Directory Structure](#)

## Using QuickStart

When the WebLogic Platform installation is completed using graphical-mode installation, the QuickStart application is launched automatically, by default. If you do not want to run QuickStart at the completion of the installation process, you can clear the Run QuickStart check box in the Install Complete window. QuickStart is not invoked for console or silent-mode installations.

QuickStart is designed to help first-time users evaluate, learn, and use WebLogic Platform. If you installed WebLogic Platform using a complete installation, or used a custom installation to install specific components and examples, the sample domains that are installed are automatically configured to run with the PointBase database, a database that is installed with WebLogic Server.

QuickStart provides quick access to the WebLogic Platform Tour and other installed samples, the Configuration Wizard, other development tools, and online documentation.

**Note:** The WebLogic Platform Tour is available only if you performed a complete WebLogic Platform installation, or installed all of the WebLogic Platform components during a custom installation.

QuickStart includes the Launcher Console, which displays information about the sample application or WebLogic Platform component that you have started as follows:

- QuickStart Console tab—when this tab is selected, the console displays information generated by the script used to start the application or component. This information includes the file path and any arguments to the script.
- Process tabs—once a server process is started, a tab is displayed that shows the process name. When you select the tab associated with the process, the console displays basic process status messages, such as `PROCESS STARTING`, `PROCESS ACTIVE`, and so on.

QuickStart displays a Shut Down button with each process tab. Click this button to halt the server process and close all command windows associated with it.

After installation, you can launch QuickStart as follows:

- On Window systems, choose Start→Programs→BEA WebLogic Platform 8.1→QuickStart.
- On UNIX systems, perform the following steps:

- a. Log in to the target UNIX system.

- b. Go to the `/common/bin` subdirectory of the WebLogic Platform installation. For example:

```
cd /home/bea/weblogic81/common/bin
```

- c. Enter the following command:

```
sh quickstart.sh
```

## Using an Alternate Database

When you install WebLogic Platform, all sample domains are preconfigured to use the PointBase database. However, you may want to use another supported database, such as Oracle. To use the domain with a database other than PointBase, you need to configure a new domain and initialize the new database. For details about configuring a domain with an alternate database, see “How Do I Create a Domain Using a Different Database?” in *Creating WebLogic Configurations Using the Configuration Wizard* at

[http://e-docs.bea.com/platform/docs81/configwiz/examples.html#createdomain\\_diffdb](http://e-docs.bea.com/platform/docs81/configwiz/examples.html#createdomain_diffdb).

For information about databases supported on your platform and any associated restrictions or limitations, see “Supported Database Configurations” in *Supported Configurations for WebLogic Platform 8.1* at

[http://e-docs.bea.com/platform/suppconfigs/configs81/81\\_over/supported\\_db.html](http://e-docs.bea.com/platform/suppconfigs/configs81/81_over/supported_db.html).

## Using the TIBCO Rendezvous Event Generator

If you have installed the TIBCO Rendezvous Control and Event Generator subcomponent of WebLogic Integration, you must first deploy the TIBCO RV event generator application file `TibRVEG.ear` into your WebLogic Integration domain. Once this application file is deployed, you can create TIBCO RV event generators from the WebLogic Integration Administration Console.

The `TibRVEG.ear` file is available in the following directory:

`WL_HOME/integration/lib`

For more information, see “TIBCO Rendezvous Event Generator” in the *TIBCO Rendezvous Control and Event Generator User Guide*, available at the following URL:

<http://e-docs.bea.com/wli/docs81/tibcorv/tibcoeg.html>

**Note:** If your WebLogic Integration domain includes a cluster, the TIBCO Rendezvous event generator application should be deployed on the Administration Server only.

## Determining Which SDK Version You Are Using

You can determine which version of the SDK you are using in either of two ways: by issuing a command or by examining the contents of the log file created for the server. Instructions for both methods are provided in [Table 5-1, “Determining the SDK Version,” on page 5-4](#).

Table 5-1 Determining the SDK Version

To determine the SDK . . .	Perform the following steps . . .
From the command line	<div>1. Open a command prompt window and go to the following directory: <div><div><code>WL_HOME\server\bin</code> (Windows)</div><div><code>WL_HOME/server/bin</code> (UNIX)</div></div><div>In this pathname, <i>WL_HOME</i> represents the directory in which you installed WebLogic Platform.</div></div> <div>2. Make sure that your environment is set by entering the following command at the prompt: <div><div><code>setWLSenv.cmd</code> (Windows)</div><div><code>setWLSenv.sh</code> (UNIX)</div></div></div> <div>3. Enter the following command at the prompt: <div><code>java -version</code></div><div>If you are using BEA JRockit, BEA WebLogic JRockit (TM) is displayed in the output.</div></div>
Using the server log file	<div>1. In a text editor, open the server log file for your domain. <div>The location of the server log file may vary. For some domains, the log file is called <code>weblogic.log</code> and is located in the <i>domain_name</i>\logs directory, where <i>domain_name</i> is one of the following: the name of the domain you provided when you created the domain using the Configuration Wizard, or, the name of a sample domain. <div>For example, <code>C:\bea\user_projects\mydomain\logs\weblogic.log</code>. For details about server log files, see “Server Log” in the <i>WebLogic Server Administration Console Online Help</i> at <a href="http://e-docs.bea.com/wls/docs81/ConsoleHelp/logging.html">http://e-docs.bea.com/wls/docs81/ConsoleHelp/logging.html</a>.</div><div><b>Note:</b> The server log file is created the first time the server is started.</div></div></div> <div>2. Search the log file for the following values: <div><div><code>java.vm.version</code></div><div><code>java.vm.vendor</code></div></div><div>These entries in the log file provide the build version of the JVM and the JVM vendor (for example Sun Microsystems Inc. or BEA Systems, Inc.)</div></div>

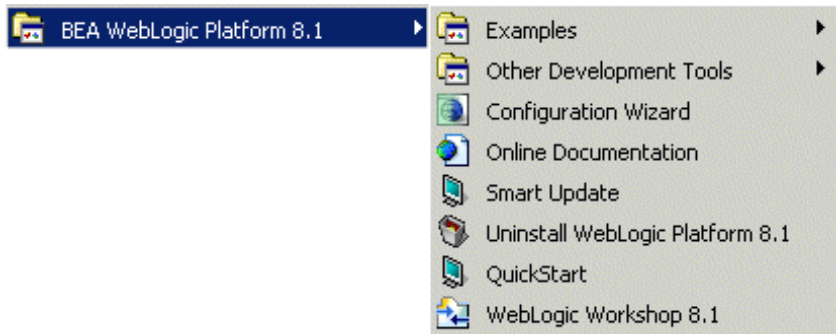
# Understanding the WebLogic Platform Windows Shortcuts

When you install WebLogic Platform on a Windows system, the installation program automatically creates shortcut files on the Start Menu. Options on the Start Menu vary, according to the components you choose to install.



The WebLogic Platform 8.1 folder (Start→Programs→BEA WebLogic Platform 8.1) contains the shortcut files shown in the following figure.

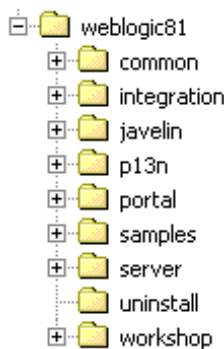
**Figure 5-1 WebLogic Platform 8.1 Start Menu**



- *Examples*—contains a folder for each component installed on your system and the WebLogic Server MedRec example. The component folders contain shortcuts for launching the samples and associated tools for the component.
- *Other Development Tools*—contains shortcuts for launching the Configuration Template Builder, DbVisualizer, Node Manager, Format Builder and the WebLogic Builder development tools.
- *Configuration Wizard*—starts the Configuration Wizard to help you create user domains. For information about using the Configuration Wizard, see the online help available with the software or *Creating WebLogic Configurations Using the Configuration Wizard* at <http://e-docs.bea.com/platform/docs81/configwiz/index.html>.
- *Online Documentation*—provides a link to the BEA WebLogic Platform online documentation on the e-docs Web site.
- *QuickStart*—starts the WebLogic Platform QuickStart application designed to assist first-time users in evaluating, learning, and using WebLogic Platform.
- *Smart Update*—launches the Smart Update program, which checks for any updates available for installed BEA products, and installs the updates as required.
- *Uninstall WebLogic Platform 8.1*—launches the WebLogic Platform 8.1 uninstallation program. For more information, see [Chapter 8, “Uninstalling WebLogic Platform.”](#)
- *WebLogic Workshop 8.1*—contains a shortcut for launching WebLogic Workshop. For details about using WebLogic Workshop, see the WebLogic Workshop documentation set at <http://e-docs.bea.com/workshop/docs81/index.html>.

# Understanding the WebLogic Platform Product Directory Structure

During the WebLogic Platform installation, you are asked to select or create a BEA Home directory and a product installation directory. For information about the BEA Home directory, see [“Choosing a BEA Home Directory” on page 1-19](#). For a complete installation, the installation program creates a dedicated directory structure for the WebLogic Platform software. It may or may not reside in the BEA Home directory. The following diagram shows the directory tree structure for a complete WebLogic Platform installation.



[Table 5-2](#) describes the contents of each directory.

**Note:** The installation program does not create directories for components that are not installed. For example, if you performed a complete installation using the WebLogic Server installer, the `integration`, `p13n`, and `portal` directories are not created.

**Table 5-2 Product Installation Directory Structure**

This directory . . .	Contains . . .
weblogic81	Folders for files shared by WebLogic Server, WebLogic Integration, WebLogic Portal, and WebLogic Workshop.
common	Files shared by WebLogic Platform components, including scripts used for setting environment attributes common to all WebLogic domains running on the machine, template <code>jar</code> files used by the Configuration Wizard when creating domains, and evaluation software from third-party vendors.

**Table 5-2 Product Installation Directory Structure (Continued)**

This directory . . .	Contains . . .
integration	<p>WebLogic Integration program files.</p> <p>Note the following files created in the <code>lib</code> subdirectory:</p> <ul style="list-style-type: none"> <li>• The file <code>bpelexport.jar</code> is added if you install the BPEL Import and Export tools.</li> <li>• The file <code>TibRVEG.ear</code> is added if you install the Tibco RV control and event generator.</li> </ul> <p><b>Note:</b> The file <code>TibRVControl.zip</code> is added to the <code>BEA_HOME/ext_components</code> directory.</p>
javelin	A 100% Java/JSP compiler that is used by the component products in WebLogic Platform for compiling <code>.java</code> and other source files generated by the Workshop IDE or other development tools.
p13n	WebLogic Portal Personalization libraries and files
portal	WebLogic Portal program files
samples	Sample code, resources, and preconfigured sample domains designed to help you learn how to develop your own applications using the WebLogic Platform software. Samples are organized by components installed on the system. For example, the <code>platform</code> folder in this directory contains the source code for executing the WebLogic Platform Tour. Similarly, the <code>server</code> folder contains the source code for <code>examples</code> and <code>medrec</code> sample applications.
server	WebLogic Server program files
uninstall	Code required to uninstall the WebLogic Platform software
workshop	<p>WebLogic Workshop application and documentation files.</p> <p>Note that if you install the BPEL Import and Export tools, the following files are created in the <code>extensions</code> subdirectory:</p> <ul style="list-style-type: none"> <li>• <code>bpelexportExtension.jar</code></li> <li>• <code>bpelImportExtension.jar</code></li> </ul>

## Performing Post-Installation Tasks

# Installing and Updating WebLogic Platform License Files

Your WebLogic Platform distribution requires a valid product license to run. The following sections explain how to acquire, install, and update a WebLogic Platform license:

- [About WebLogic Platform Licenses](#)
- [Updating Your license.bea File](#)
- [Upgrading Licenses from Previous WebLogic Platform Releases](#)
- [Installing Licenses for Use with Promotional CD Distributions](#)

## About WebLogic Platform Licenses

WebLogic Platform uses an XML-format license file called `license.bea`. This license file, stored in the BEA Home directory, is used for the BEA WebLogic Platform products installed in that BEA Home directory. WebLogic Platform checks this file at run time to determine which software components you are authorized to use.

**Note:** If you have multiple BEA Home directories on your system, each BEA Home must have a `license.bea` file that authorizes use of the products associated with that directory.

Licenses are release specific. To use WebLogic Platform 8.1, you must have an 8.1 license file. To convert a pre-8.1 `license.bea` file to a WebLogic Platform 8.1 `license.bea` file, see [“Upgrading Licenses from Previous WebLogic Platform Releases” on page 6-7](#).

The types of license files that can be used as the `license.bea` file and the technical restrictions that they impose are described in the following table.

**Note:** See the BEA Software License Agreement for specific license terms and conditions.

**Table 6-1 WebLogic Platform 8.1 License File Types**

License Type	Description
Development	<ul style="list-style-type: none"><li>• Used in a development environment where a developer is preparing an application to run on top of WebLogic Platform; a scale-limited or production license is required for deployment.</li><li>• Enables all WebLogic Platform component products.</li><li>• Enables you to run WebLogic Platform on a single machine, including machines running multiple instances of WebLogic Server</li><li>• Permits client connections from a maximum of five IP addresses. IP addresses are tracked from the time the server is started. When you restart the server, the count is reset.</li><li>• Installed with WebLogic Platform in the BEA Home directory as <code>license.bea</code>.</li><li>• Is not tied to the IP address of a machine.</li></ul>
Scale-limited	<ul style="list-style-type: none"><li>• Used in limited-scale production environments.</li><li>• Enables all WebLogic Platform component products.</li><li>• Enables you to run a <i>single</i> WebLogic Server instance with a server capacity limited to approximately 3 percent of the full capacity of a production server with a production license.</li><li>• Restricts server capacity by limiting concurrent socket connections to a maximum of three connections. Requests for a fourth socket connection are blocked until a socket becomes free.</li><li>• Permits client connections from an unlimited number of IP addresses.</li><li>• Installed, with WebLogic Platform 8.1 SP3 and higher, in the BEA Home directory as <code>license_scale_limited.bea</code>.</li><li>• Supported only with BEA WebLogic Platform 8.1 SP2 and higher.</li><li>• Is not tied to the IP address of a machine.</li></ul> <p><b>Note:</b> If you wish to deploy applications in scale-limited mode, it is recommended that you develop with the development license file described above, then replace the scale-limited license file prior to scale-limited testing and deployment.</p>

**Table 6-1 WebLogic Platform 8.1 License File Types**

License Type	Description
Production	<ul style="list-style-type: none"> <li>• Used in full-scale production environments.</li> <li>• May restrict functionality to the software components that you have purchased.</li> <li>• Enables you to run WebLogic Platform on a single machine, including machines running multiple instances of WebLogic Server</li> <li>• Permits client connections from an unlimited number of IP addresses.</li> <li>• Must be purchased separately. For information about purchasing a production license, contact your sales representative or visit the BEA corporate Web site at <a href="http://www.bea.com">http://www.bea.com</a>.</li> <li>• Is tied to the IP address of the machine. A production license can be used only on a machine with the same IP address that is specified in the license file.</li> </ul>
<b>Note:</b> This is a special type of production license available only for the WebLogic Server Workgroup Edition product.	<ul style="list-style-type: none"> <li>• Restricts software functionality to that provided in WebLogic Server Workgroup Edition, as described in the WebLogic Platform <i>Licensing</i> page at <a href="http://e-docs.bea.com/platform/docs81/interm/licensing.html">http://e-docs.bea.com/platform/docs81/interm/licensing.html</a>.</li> <li>• Permits client connections from an unlimited number of IP addresses, but is limited to 20 concurrent users.</li> <li>• Enforces user limitation by restricting the number of concurrent HTTP sessions with associated data to 20 sessions.</li> <li>• Must be purchased separately. For information about purchasing a Workgroup license, contact your sales representative or visit the BEA corporate Web site at <a href="http://www.bea.com">http://www.bea.com</a>.</li> <li>• Is tied to the IP address of the machine.</li> </ul>

When you install WebLogic Platform 8.1 Service Pack 3 or later, two non-expiring license files are installed on your system: a development license (`license.bea`) and a scale-limited license (`license_scale_limited.bea`).

**Note:** The scale-limited license can also be downloaded for use with 8.1 SP2. For details on downloading and installing the scale-limited license for SP2, see “Downloading and Installing the Scale-Limited Licenses in SP2” at the following URL:

[http://e-docs.bea.com/platform/docs81/sp\\_notes/sp\\_notes.html#scale\\_limited\\_license](http://e-docs.bea.com/platform/docs81/sp_notes/sp_notes.html#scale_limited_license).

You can start using the product immediately after installing it for the first time because, by default, WebLogic Platform uses the development license that is installed in BEA Home directory.

**Note:** The `license.bea` file delivered with your software conforms with the XML grammar definition. The XML definition (`<?xml version="1.0" encoding="UTF-8"?>`) must be at the very beginning of the `license.bea` file. There cannot be any spaces or line breaks before the XML definition.

For a description of the product offerings supported by the WebLogic Platform license files, see the WebLogic Platform *Licensing* page at the following URL:

<http://e-docs.bea.com/platform/docs81/interm/license.html>

## Updating Your `license.bea` File

When you install WebLogic Platform, the installation program generates a development `license.bea` file for use with the WebLogic Platform software and installs it in the BEA Home directory.

**Note:** If you are installing into an existing BEA Home that contains a previous release of WebLogic Platform, the installation program automatically adds the WebLogic Platform 8.1 development license to the existing `license.bea` file. However, if you are adding WebLogic Platform 8.1 product components into a BEA Home that already contains a WebLogic Platform 8.1 production or ISV license for existing components, the development license for the additional components is not added to the `license.bea` file. To use the additional components, you must merge a production or ISV license for those components into the existing `license.bea` file, or install the components into a separate BEA Home directory.

You must update the `license.bea` file separately, independent of the installation process if at least one of the following is true:

- You want to use a scale-limited license.
- You purchase a product for production use and you receive a production license to replace your development license.
- You want to upgrade production systems to a new release of the software. After installing the current release of the software, you must upgrade your license to the current version. To do so, see [“Upgrading Licenses from Previous WebLogic Platform Releases” on page 6-7](#).
- You purchase a new release of a product you are already using in production and you want to use both the old and the new releases in production on the same system. For example, you are currently using WebLogic Platform 7.0, you purchase WebLogic Platform 8.1, and you want to use both releases on the same system.



- You purchase additional BEA WebLogic software with production licenses, and you want to add the production licenses for the new software to the production licenses for software already in production use on your system.
- You want to consolidate existing production licenses for different component products onto a single machine.
- You want to transfer existing production licenses from one machine to another machine with a different IP address.

In each of these cases, you will receive a new license file from BEA, the contents of which must be included in the `license.bea` file in the target BEA Home directory. To facilitate the license update process, BEA provides an `UpdateLicense` utility that merges the new license into the existing license in the BEA Home directory, and deletes any expired or duplicate entries.

## Important Considerations for Updating Your `license.bea` File

When determining how to update your `license.bea` file, you should consider the following:

- BEA recommends that you use the `UpdateLicense` utility *unless* you want to use the scale-limited license or an ISV redistribution license. In general, you should install these licenses by replacing your existing `license.bea` file. Scale-limited licenses for WebLogic Platform 8.1 should not be merged with other WebLogic Platform 8.1 development or production licenses. For instructions on installing the scale-limited license and ISV redistribution license, see [“Replacing Your `license.bea` File” on page 6-7](#).
- If you merge any WebLogic Platform 8.1 production or ISV license with an existing `license.bea` file that contains WebLogic Platform 8.1 development license entries, all development entries are removed. For example, if you merge a WebLogic Server 8.1 production license with a WebLogic Platform 8.1 development license, all development entries for the remaining WebLogic Platform 8.1 component products will be removed.
- If you merge a WebLogic Server 7.0 production license with a WebLogic Server 8.1 development license, the development and production rights associated with the different WebLogic Server license versions are retained. The merge process creates a single license file which can be used for both WebLogic Server 7.0 production and WebLogic Server 8.1 development. The merge process does not change the development and production rights associated with either the WebLogic Server 7.0 or WebLogic Server 8.1 entries. If you want to upgrade the WebLogic Server 7.0 production license to WebLogic Server 8.1, see [“Upgrading Licenses from Previous WebLogic Platform Releases” on page 6-7](#).
- If you merge a WebLogic Server 7.0 license for IP address *A* with a WebLogic Server 8.1 license for IP address *B*, the IP addresses for both WebLogic Server license versions are retained. The

merge process creates a single license file that can be used to run WebLogic Server 7.0 on IP address *A* and WebLogic Server 8.1 on IP address *B*. The merge process does not change the IP address associated with either the WebLogic Server 7.0 or WebLogic Server 8.1 entries. If you want to change the IP address for a given license file, you must use the BEA eLicense system at <http://elicense.bea.com>.

- You may choose to replace an existing `license.bea` file with a new `license.bea` file, but if you do so, you run the risk of losing the product usage rights enabled by your existing license file.

**Note:** Do not edit `license.bea` file manually. Doing so may cause operating problems for the currently installed BEA products, or result in problems later when BEA products are installed for maintenance upgrades.

## Updating `license.bea` Using the UpdateLicense Utility

To update your `license.bea` file, perform the following procedure.

1. Save the license update file that you received through e-mail, with a name other than `license.bea`, in the target BEA Home directory. For example, save the file as `new_license.bea`. Use this file as the *license\_update\_file* in step 4 of this procedure.

**Warning:** Do not overwrite or change the name of the existing `license.bea` file.

2. Perform the step appropriate for your platform:
  - On a Windows system, open an MS-DOS command window and go to the target BEA Home directory.
  - On a UNIX system, go to the target BEA Home directory.
3. If it is not already included, add the Java 2 SDK to your `PATH` variable by entering the following commands:

- On a Windows system:

```
set PATH=BEA_HOME\SDK\bin;%PATH%
```

- On a UNIX system:

```
PATH=BEA_HOME/SDK/bin:$PATH
export PATH
```

In these commands, *SDK* represents the directory name of the Java 2 SDK being used for this installation, for example, `jdk142_08` or `jrockit81sp5_142_08`.

4. Merge the license update file into your existing license by entering one of the following commands:

- On a Windows system:

```
UpdateLicense license_update_file
```

- On a UNIX system:

```
sh UpdateLicense.sh license_update_file
```

*license\_update\_file* is the name to which you saved the license update file in step 1.

5. Save a copy of your updated `license.bea` file in a safe place outside the WebLogic Platform and application installation directories.

Although no one else can use your license file, you should save it in a place that is protected from both malicious and innocent tampering.

## Replacing Your `license.bea` File

In certain instances, you may need to replace your existing `license.bea` file with a new license file, such as a scale-limited or an ISV redistribution license. To do so, complete the following steps:

1. Open Windows Explorer or a command shell and navigate to the BEA Home directory associated with your installation, typically `c:\bea`.
2. Make a backup copy of your `license.bea` file. For example, at the command prompt, enter the following command:

```
c:\bea> RENAME license.bea license.bea.backup
```

3. Rename the scale-limited license file to `license.bea`. For example, at the command prompt, enter the following command:

```
c:\bea> RENAME license_scale_limited.bea license.bea
```

**Note:** The scale-limited license is non-expiring and will continue to be valid for update releases of WebLogic Platform 8.1 that are issued after SP2 and that are installed in the same BEA Home directory.

## Upgrading Licenses from Previous WebLogic Platform Releases

The format of the `license.bea` file changes with each release of WebLogic Platform. To upgrade a `license.bea` file from a previous release of WebLogic Platform to a license for the current version, complete the following steps:

1. Log in to the BEA eLicense Web site at <http://elicense.bea.com>.

**Note:** You need a BEA eLicense account to log in to this Web site. If you do *not* have a BEA eLicense account, click the Register link on the Customer Support site to register for one.

2. In the left navigation area of the Web page, click Upgrade/Downgrade and follow the instructions on the page. If the license you want to upgrade is not listed, click the Add a Missing License link. The BEA Licensing team will research the missing license for you.
3. You will receive an upgraded license file through e-mail. To update the `license.bea` file on your system, see “[Updating license.bea Using the UpdateLicense Utility](#)” on page 6-6.

## Installing Licenses for Use with Promotional CD Distributions

In some cases, BEA distributes software for promotional purposes on CD. These CDs include installers that do not automatically generate a development license key. Instead, the CD folio directs you to a BEA web site, where you can obtain a development license file after you supply a code from the CD folio. The license file you obtain allows you to begin using the software immediately, and entitles you to the same usage rights as described for the development license in [Table 6-1, “WebLogic Platform 8.1 License File Types,”](#) on page 6-2.

When you receive this license file from BEA, complete the following steps:

1. Save the license file using the name `license.bea`. Make sure that the file name does not include a suffix, such as `.txt`.
2. Copy the `license.bea` file into the BEA Home directory in which WebLogic Platform was installed. For example, `c:\bea`.

# Installing Service Packs and Rolling Patches

You can upgrade your WebLogic Platform installation by using one of two methods: Smart Update (recommended) or the downloadable upgrade installer. The following sections describe how to upgrade your software using either method:

- [About Service Packs and Rolling Patches](#)
- [Installing Service Packs and Rolling Patches Using Smart Update](#)
- [Installing Service Packs and Rolling Patches Using a Downloadable Upgrade Installer](#)
- [Uninstalling Maintenance Upgrades Using Smart Update](#)
- [Upgrading Web Server Plug-Ins](#)

## About Service Packs and Rolling Patches

Periodically, BEA releases a service pack or a rolling patch for WebLogic Platform. A service pack is an update to an existing release that includes solutions to known problems and other product enhancements. A service pack is not a replacement for an installation of WebLogic Platform, but a package of changes and additions for it. Between service packs, rolling patches are issued to provide bug fixes for individual components. A rolling patch does not provide product enhancements.

**Note:** Service packs and rolling patches are available for download only for registered support customers, from a password-protected Web site. To download one of these product updates, you must log in using your eSupport username and password. If you do not have an eSupport account, go to the following URL to get one: <http://support.bea.com>.

You can install service packs and rolling patches using the following methods:

- Smart Update (recommended), which allows you to retrieve code and media archives from the BEA server. Media archives can be retrieved only for components currently installed in the target BEA Home directory.
- Package upgrade installer, which you can download from the BEA Customer Support Web site at <http://support.bea.com>, without downloading the entire WebLogic Platform distribution. The upgrade installation program supports graphical and console modes of installation.

Both Smart Update and the package upgrade installer create a backup file containing the media state of the current installation and information about files that were added during the upgrade. This backup file is used to restore system state if any errors occur during installation, and when you uninstall or roll back an upgrade installation.

For a typical upgrade installation of WebLogic Platform (that is, all WebLogic Platform component products installed), you require a minimum of 250MB of available disk space.

**Notes:** The upgrade installer only updates files installed by the WebLogic Platform installation program. It does not update any user-created files, or directories created using the Configuration Wizard (`user_projects` by default).

Temporary patches are not compatible across service packs. If you installed a temporary patch and updated your classpath to reference the patch, you may need to remove any references to the patch from your classpath.

## Important Note If You Use the Node Manager in a Clustered Environment

If you are using Node Manager to manage your servers in a clustered environment, you should back up the following directory and files on all machines that are running the Node Manager before upgrading your installations:

### Windows:

```
WL_HOME\common\nodemanager
WL_HOME\server\bin\startNodeManager.cmd
```

### UNIX:

```
WL_HOME/common/nodemanager
WL_HOME/server/bin/startNodeManager.sh
```

In these pathnames, `WL_HOME` is the root directory of your WebLogic Platform installation, for example, `c:\bea\weblogic81`.

Once the upgrade installation is complete, you should restore these files.

For more information about Node Manager, see "Overview of Node Manager" in *Configuring and Managing WebLogic Server* at:

<http://e-docs.bea.com/wls/docs81/adminguide/nodemgr.html>

## Installing Service Packs and Rolling Patches Using Smart Update

You can use the Smart Update feature to check, periodically, for available software updates. When you start Smart Update, it checks the version numbers of the products installed (associated with the current BEA Home directory), and then connects to the BEA Web site to check for available service packs. The Smart Update Window includes three panes:

- **Installed Products**—The left pane of the Smart Update window which contains a tree displaying product and release information for products installed in the target BEA Home directory.
- **Upgrade Options**—The top-right pane, which lists the service packs and rolling patches, if any, that are available for the installed products.
- **Downgrade Options**—The bottom-right pane, which lists the versions of the product to which you can revert your installation, if applicable. For details about uninstalling maintenance upgrades with Smart Update, see “[Uninstalling Maintenance Upgrades Using Smart Update](#)” on [page 7-19](#).

**Note:** Smart Update checks for only those products that are associated with the current BEA Home directory. If you have multiple BEA Home directories on your system, you must run Smart Update once for each directory, to make sure that available service packs are installed for each one. For more information about BEA Home directories, see “[Choosing a BEA Home Directory](#)” on [page 1-19](#).

To install service packs or rolling patches using Smart Update, perform the following steps:

1. Make backup copies of any files or applications that you have created in `WL_HOME`. (As part of the upgrade procedure, the installation program automatically overwrites any files, including applications, that you have created in this directory.) For a description of the `WL_HOME` directory, see “[Choosing a Product Installation Directory](#)” on [page 1-23](#).

**Note:** In some cases, changes are made in the `config.xml` file between service packs. You may want to make backup copies of the `config.xml` file in any user-created domains also, in case you later want to roll back or uninstall an upgrade installation.

2. Shut down any servers that are running. *Hot installation* of a service pack or rolling patch is not supported.

3. Start Smart Update as described in the following table.

Table 7-1 Starting Smart Update

To start Smart Update on this platform . . .	Perform the following steps . . .
Windows	<p>From the Start Menu:</p> <ul style="list-style-type: none"><li>Choose Start→Programs→BEA WebLogic Platform 8.1→Smart Update</li></ul> <p>From an MS-DOS command prompt window:</p> <ol style="list-style-type: none"><li>Go to the <i>BEA_HOME\utils\bsu</i> directory, where <i>BEA_HOME</i> is the directory containing the installation of WebLogic Platform that you want to update.</li><li>Enter the following command at the prompt: <code>bsu.cmd</code> The Smart Update window is displayed.</li></ol>
UNIX	<ol style="list-style-type: none"><li>Log in to the UNIX system.</li><li>Change to the <i>BEA_HOME/utils/bsu</i> directory, where <i>BEA_HOME</i> is the directory containing the installation of WebLogic Platform that you want to update.</li><li>Enter the following command: <code>bsu.sh</code> The Smart Update window is displayed.</li></ol>

**Note:** To run Smart Update on a UNIX system, the console attached to the machine on which you are upgrading the software must support a Java-based GUI.

4. In the Installed Products pane of the Smart Update window, select the release for the product you want to update.

If any service packs or rolling patches are available, they are displayed in the Upgrade Options section of the window.

5. In the Upgrade Options pane, select the service pack or rolling patch to be installed and click OK.

The Enter eSupport Identification dialog box is displayed.

6. Enter a valid eSupport username and password and click Verify.

**Note:** You must have a valid eSupport account to install a service pack or rolling patch using Smart Update. If you do not have one, you can register for an account at <http://support.bea.com>.

The BEA Installation Program Welcome window is displayed.



7. Click Next to proceed with the installation. You may cancel the installation at any time by clicking Exit.

The Downloading Archive Information window is displayed briefly, followed by the Specify Download Options window.

8. Indicate your preferences for downloading the software as follows:
  - Specify a storage directory to which you want to download the software upgrade source files.
 

**Note:** If you have previously specified a storage directory, that directory name is displayed. If you have not previously specified a storage directory, the installer specifies the system temporary directory as the default. Make sure that your temporary directory has sufficient space to accommodate the archive files and the installation program. For more information about temporary space required by the installation program, see [“Temporary Disk Space Requirements” on page 1-14](#).
  - Indicate whether you want to delete the downloaded files after the installation is complete by selecting the appropriate check box. If you do not select this check box, the downloaded files are saved in the storage directory you specified.
  - Indicate whether you want to use an HTTP Proxy server for the download by selecting the appropriate check box. To use an HTTP Proxy server, you must provide the following information:
 

Host—enter the name or IP address of the proxy server

Port—enter the port number of the proxy server

Username—enter a valid username if the HTTP Proxy server you are using requires server-side authentication

Password—enter a valid password for the user

9. Click Next.

The Archive Download window is displayed.

10. Indicate whether you want to proceed with the installation, automatically, after the download is complete by selecting or clearing the appropriate check box. This check box is selected by default. If you clear it, you need to click Next when the download is complete to proceed with the installation.

Click Pause if you need to interrupt the download for any reason. If you do so, the download is discontinued and the Pause button is replaced by a Resume button. Click Resume when you want to proceed with the download.

When the download is complete, the Archive Integrity Check window is displayed while it verifies the integrity of the upgrade archive files you downloaded.

When the archive verification is complete, the Confirm Product Directory window is displayed, which contains the path to the BEA home directory and to the product directory in which the WebLogic Platform software will be updated.

11. Click Next to proceed with the upgrade installation.

A status window displays the progress of the installation. When the installation is finished, the Installation Complete window is displayed.

12. Click Done on the Installation Complete window.

The Smart Update window is displayed, indicating the upgraded release level in the Installed Products pane. Choose File—Exit to close the Smart Update window.

## Installing Service Packs and Rolling Patches Using a Downloadable Upgrade Installer

When a maintenance release is available, you can download a package upgrade installer from the BEA Customer Support Web site at <http://support.bea.com>.

**Note:** Service packs and rolling patches are available for download only for registered support customers, from a password-protected Web site. To download one of these product updates, you must log in using your eSupport username and password. If you do not have an eSupport account, you can register for one on the BEA Customer Support Web site.

Two package upgrade installers are available: a WebLogic Platform upgrade installer for all components of WebLogic Platform, and a WebLogic Server upgrade installer, which includes WebLogic Server and WebLogic Workshop only. Both programs provide the same functionality; the procedures provided in this section apply to both installers.

These installers upgrade only those components that are already installed on your system. For example, if your installation consists of the WebLogic Server, WebLogic Workshop and WebLogic Portal components of WebLogic Platform 8.1, the upgrade installer upgrades only those components.

You cannot use the WebLogic Platform upgrade installer to install additional components, such as WebLogic Integration. To install additional components, you must use either the net or package installer, as described in [“WebLogic Platform Distribution Methods” on page 1-11](#).

The upgrade installer can be run in the following modes on both UNIX and Windows platforms:

- Graphical mode. For instructions, see [“Using the Upgrade Installer in Graphical Mode” on page 7-7.](#)
- Console mode. For instructions, see [“Using the Upgrade Installer in Console Mode” on page 7-10.](#)
- Silent mode. For instructions, see [“Using the Upgrade Installer in Silent Mode” on page 7-14.](#)

**Notes:** To run graphical-mode installation, your console must support a Java-based GUI. If the installation program determines that your system cannot support a Java-based GUI, it automatically starts running in console-mode.

The upgrade installation programs require a Java run-time environment (JRE) to run. A JRE is bundled in the Windows installation program, and in some UNIX installation programs (those with filenames ending in `.bin`). For other UNIX platforms, the WebLogic Platform installation program does not include the Java 2 SDK. Filenames for these installation programs end in `.jar`. To run the `.jar` installation programs, you must have an appropriate version of a Java 2 SDK installed on your system, and include the `bin` directory of the Java 2 SDK at the beginning of your `PATH` system variable.

**Notes:** It is important that you use an SDK because the installation process resets the `JAVA_HOME`, and related variables to point to this directory. All scripts installed with WebLogic Platform use this SDK by default, including scripts to start sample applications, the Configuration Wizard, and other WebLogic development tools.

## Using the Upgrade Installer in Graphical Mode

To complete the upgrade installation in graphical mode on UNIX and Windows systems, perform the following steps:

1. Make backup copies of any files or applications that you have created in `WL_HOME`. (As part of the upgrade procedure, the installation program automatically overwrites any files, including applications, that you have created in this directory.) For a description of the `WL_HOME` directory, see [“Choosing a Product Installation Directory” on page 1-23.](#)

**Note:** In some cases, changes are made in the `config.xml` file between service packs. You may want to make backup copies of the `config.xml` file in any user-created domains also, in case you later want to roll back or uninstall an upgrade installation.

2. Download the upgrade installer specific to your platform from the BEA Customer Support Web site at <http://support.bea.com>.

**Note:** To download updates, you will need to log in using your eSupport username and password. If you do not have an eSupport account, you can register for one on the BEA Customer Support Web site.

- 3. Shut down any servers that are running. *Hot installation* of a service pack or rolling patch is not supported.
- 4. Start the upgrade installer as described in the following table.

**Table 7-2 Starting the Upgrade Installer in Graphical Mode**

To start the upgrade installer on this platform . . .	Perform the following steps . . .
Windows	<div><div>1. Go to the directory in which you downloaded the installation program and double-click <i>filename.exe</i>, where <i>filename.exe</i> is the name of the installation file you downloaded from the BEA Customer Support Web site, for example, <i>platformXXX_upgrade_win32.exe</i>. In this filename, <i>XXX</i> represents the version number of the software you are installing.</div><div>The installation program begins to install the upgrade.</div><div>2. Proceed to step 5.</div></div>

**Table 7-2 Starting the Upgrade Installer in Graphical Mode (Continued)**

To start the upgrade installer on this platform . . .	Perform the following steps . . .
UNIX	<p data-bbox="391 453 834 482"><b>For installers with filenames ending in .bin :</b></p> <ol data-bbox="391 491 1210 548" style="list-style-type: none"> <li>1. Go to the directory in which you downloaded the installation program, and invoke the installation procedure by entering the following commands:</li> </ol> <pre data-bbox="431 557 733 609">chmod a+x filename.bin ./filename.bin</pre> <p data-bbox="431 618 1237 739">Here <i>filename.bin</i> is the name of the upgrade installation program you downloaded from the BEA Customer Support Web site, for example <i>platformXXX_upgrade_solaris.bin</i>. In this filename, <i>XXX</i> represents the version number of the software you are installing.</p> <p data-bbox="431 748 928 777">The installation program begins to install the upgrade.</p> <ol data-bbox="391 782 592 812" style="list-style-type: none"> <li>2. Proceed to step 5.</li> </ol> <hr/> <p data-bbox="391 835 834 864"><b>For installers with filenames ending in .jar :</b></p> <ol data-bbox="391 873 1224 930" style="list-style-type: none"> <li>1. Include the <code>bin</code> directory of the appropriate Java 2 SDK at the beginning of the <code>PATH</code> variable definition on the target system. For example:</li> </ol> <pre data-bbox="431 939 760 991">PATH=JAVA_HOME/bin:\$PATH export PATH</pre> <p data-bbox="431 999 1002 1029">Here <i>JAVA_HOME</i> is the full path of the Java 2 SDK directory.</p> <ol data-bbox="391 1038 1157 1095" style="list-style-type: none"> <li>2. Go to the directory in which you downloaded the installation file and invoke the installation procedure by entering the following command:</li> </ol> <pre data-bbox="431 1104 733 1133">java -jar filename.jar</pre> <p data-bbox="431 1142 1237 1263">where <i>filename.jar</i> is the name of the upgrade installation program you downloaded from the BEA Customer Support Web site, for example <i>pj_platformXXX_upgrade_generic.jar</i>. In this filename, <i>XXX</i> represents the version number of the software you are installing.</p> <p data-bbox="431 1272 928 1302">The installation program begins to install the upgrade.</p> <ol data-bbox="391 1307 592 1336" style="list-style-type: none"> <li>3. Proceed to step 5.</li> </ol>

5. Review the text in the Welcome window and click Next.

The Choose BEA Home Directory window is displayed.

6. Select the BEA Home directory containing the release of WebLogic Platform you want to upgrade, and click Next.

The Confirm Product Directory window is displayed, which contains the path to the BEA home directory and to the product directory in which the WebLogic Platform software will be updated.

7. Click Next.

A progress window is displayed during the upgrade installation. When the installation is finished, the Installation Complete window is displayed.

8. Click Done on the Installation Complete window to exit the installation program.

## Using the Upgrade Installer in Console Mode

To complete the upgrade installation in console mode on UNIX and Windows systems, perform the following steps:

**Note:** In this section, the UNIX delimiter, a slash (/), is used in pathnames, such as `/home1/bea/weblogic81`. When entering pathnames on a Windows system, remember to replace such slashes with backslashes (\), the Windows delimiter for pathnames. Thus, for example, instead of `/home1/bea/weblogic81`, on a Windows system you would enter `C:\bea\weblogic81`.

1. Make backup copies of any files or applications that you have created in `WL_HOME`. (As part of the upgrade procedure, the installation program automatically overwrites any files, including applications, that you have created in this directory.)

**Note:** In some cases, changes are made in the `config.xml` file between service packs. You may want to make backup copies of the `config.xml` file in any user-created domains also, in case you later want to roll back or uninstall an upgrade installation.

2. Download the upgrade installer specific to your platform from the BEA Customer Support Web site at <http://support.bea.com>.

**Note:** To download updates, you will need to log in using your eSupport username and password. If you do not have an eSupport account, you can register for one on the BEA Customer Support Web site.

3. Shut down any servers that are running. *Hot installation* of a service pack or rolling patch is not supported.
4. Start the upgrade installer as described in the following table.

**Table 7-3 Starting the Upgrade Installer in Console Mode**

To start the upgrade installer on this platform . . .	Perform the following steps . . .
Windows	<ol style="list-style-type: none"> <li>1. Open an MS-DOS command prompt window.</li> <li>2. Go to the directory in which you downloaded the installation program, and invoke the installation procedure by entering the following command:  <code>filename.exe -mode=console</code>  Here <i>filename.exe</i> is the name of the upgrade installer you downloaded from the BEA Customer Support Web site, for example <code>platformXXX_upgrade_win32.exe</code>. In this filename, <i>XXX</i> represents the version number of the software you are installing.  The upgrade installer begins to install the WebLogic Platform maintenance release.</li> <li>3. Proceed to step 5.</li> </ol>
UNIX	<p><b>For installers with filenames ending in <code>.bin</code>:</b></p> <ol style="list-style-type: none"> <li>1. Go to the directory in which you downloaded the installation program and invoke the installation procedure by entering the following commands:  <code>chmod a+x filename.bin</code>  <code>./filename.bin -mode=console</code>  Here <i>filename.bin</i> is the name of the upgrade installer you downloaded from the BEA Customer Support Web site, for example <code>platformXXX_upgrade_solaris.bin</code>. In this filename, <i>XXX</i> represents the version number of the software you are installing.  The installation program begins to install the upgrade.</li> <li>2. Proceed to step 5.</li> </ol>

Table 7-3 Starting the Upgrade Installer in Console Mode (Continued)

To start the upgrade installer on this platform . . .	Perform the following steps . . .
	<p><b>For installers with filenames ending in .jar:</b></p> <ol style="list-style-type: none"><li>1. Include the <code>bin</code> directory of the appropriate Java 2 SDK at the beginning of the <code>PATH</code> variable definition on the target system. For example: <pre>PATH=JAVA_HOME/bin:\$PATH export PATH</pre><p>Here <code>JAVA_HOME</code> is the full path to the Java 2 SDK directory.</p></li><li>2. Go to the directory in which you downloaded the installation file and invoke the installation procedure by entering the following command: <pre>java -jar filename.jar -mode=console</pre><p>Here <code>filename.jar</code> is the name of the upgrade installer you downloaded from the BEA Customer Support Web site, for example <code>pj_platformXXX_upgrade_generic.jar</code>. In this filename, <code>XXX</code> represents the version number of the software you are installing.</p><p>The installation program begins to install the upgrade.</p></li><li>3. Proceed to step 5.</li></ol>

**Note:** You can also include the `-log=full_path_to_log_file` option in the command line to create a verbose installation log. For example:

```
platformXXX_upgrade_solaris.bin -mode=console
-log=/home/bea/logs/platform_install.log
```

In this example, `XXX` represents the version number of the software you are installing. For more information, see [“Generating a Verbose Installation Log” on page 1-24](#).

5. At the Welcome prompt, type `next` or press Enter to continue with the installation process.

The Choose BEA Home directory prompt is displayed.

6. Select the BEA Home directory associated with the particular installation of WebLogic Platform that you want to update. If you have only one installation of WebLogic Platform on the current machine, only one BEA Home directory is listed. For details about the BEA Home directory, see [“Choosing a BEA Home Directory” on page 1-19](#).



The installation program displays the following prompt:

Choose BEA Home Directory:

```
->1| /home/bea
    2| /home1/beahome2
```

Enter index number to select OR [Exit] [Previous] [Next] >

Press Enter to use the selected BEA Home directory or type the number of the BEA Home directory that you want to select.

Whether you accept the selected BEA Home directory or specify a different BEA Home directory, you are prompted to confirm your selection, as shown in the following sample:

Choose BEA Home Directory:

```
->1| Yes, Use this BEA home directory [/home/bea]
    2| No, return to BEA home directory selection
```

Enter index number to select OR [Exit] [Previous] [Next] >

Type 1 or press Enter to accept your selection. Otherwise, type 2 to return to the Choose BEA Home Directory panel where you can modify your entry.

After you select the appropriate BEA Home directory and confirm your selection, the Confirm Product Directory panel is displayed.

7. The Confirm Product Directory panel indicates the folder in which the WebLogic Platform software will be updated. For example:

Confirm Product Directory:

Product Installation Directory: [home/bea/weblogic81]

Files in /home/bea/weblogic81 will now be upgraded to the 8.1.x.0 maintenance level.

Enter [Exit] [Previous] [Next] >

Press Enter or type next to continue. The following text is displayed:

8. After you confirm the product directory, the installation program makes a backup copy of specific files from the previous installation and then installs new versions of those files.

When the installation is complete, the following prompt is displayed:

```
Install Complete

Congratulations! WebLogic Platform 8.1.x.0
has been successfully installed to
/home/boa/weblogic81

Press any key to continue OR [Exit]>
```

9. Press any key to exit the installation program.

## Using the Upgrade Installer in Silent Mode

When you upgrade your installation in silent mode, you define the settings in an XML file that you create prior to beginning the upgrade installation. During the silent upgrade installation process, the installation program reads the settings for your configuration from the XML file. The installation program does not display any configuration options during the installation process. Silent-mode upgrade installation works on both Windows and UNIX systems.

The process for upgrading your installation in silent mode is similar to that used for silent-mode installation. For information about silent-mode installation, see [Chapter 4, “Installing WebLogic Platform Using Silent-Mode Installation.”](#)

To complete an upgrade installation in silent mode on UNIX and Windows systems, perform the following steps:

1. Create a silent-mode XML file as described in [“Creating a Silent-Mode Upgrade Installation XML File” on page 7-17.](#)
2. Make backup copies of any files or applications that you have created in `WL_HOME`. (As part of the upgrade procedure, the installation program automatically overwrites any files, including applications, that you have created in this directory.) For a description of the `WL_HOME` directory, see [“Choosing a Product Installation Directory” on page 1-23.](#)

**Note:** In some cases, changes are made in the `config.xml` file between service packs. You may want to make backup copies of the `config.xml` file in any user-created domains also, in case you later want to roll back or uninstall an upgrade installation.

3. Download the upgrade installer specific to your platform from the BEA Customer Support Web site at <http://support.bea.com>.

**Note:** To download updates, you will need to log in using your eSupport username and password. If you do not have an eSupport account, you can register for one on the BEA Customer Support Web site.

4. Shut down any servers that are running. *Hot installation* of a service pack or rolling patch is not supported.
  5. Invoke the silent-mode upgrade installation process as described in the following table.
- Note:** Incorrect entries in the `silent.xml` file can cause installation failures. To help you determine the cause of a failure, we recommend that you create a log file when you start the installation.

**Table 7-4 Starting the Upgrade Installer in Silent Mode**

To start the upgrade installation process on this platform . . .	Perform the following steps . . .
Windows	<ol style="list-style-type: none"> <li>1. Open an MS-DOS command prompt window.</li> <li>2. Go to the directory in which you downloaded the installation program, and invoke the installation procedure by entering the following command:  <code>filename.exe -mode=silent -silent_xml=path_to_silent_xml</code>  Here <code>filename.exe</code> is the name of the upgrade installer you downloaded from the BEA Customer Support Web site, and <code>path_to_silent.xml</code> is the <i>full</i> pathname of the <code>silent.xml</code> template file.  <b>Note:</b> You can also include the <code>-log=full_path_to_log_file</code> option in the command line to create a verbose installation log. For example:  <code>platformXXX_upgrade_win32.exe -mode=silent  -silent_xml=C:\silent.xml  -log=C:\logs\platform_install.log</code>  In this example, <code>XXX</code> represents the version number of the software you are installing. For more information, see <a href="#">“Generating a Verbose Installation Log” on page 1-24</a>.  The upgrade installer begins to install the WebLogic Platform maintenance release.</li> </ol>

Table 7-4 Starting the Upgrade Installer in Silent Mode (Continued)

To start the upgrade installation process on this platform . . .	Perform the following steps . . .
UNIX	<p><b>For installers with filenames ending in .bin:</b></p> <ol style="list-style-type: none"><li>1. Go to the directory that contains the installation file.</li><li>2. Launch the upgrade installation by entering the following command: <pre>chmod a+x filename.bin ./filename.bin -mode=silent -silent_xml=/path_to_silent.xml</pre><p>Here <i>filename.bin</i> is the name of the upgrade installation program, and <i>path_to_silent.xml</i> is the <i>full</i> pathname of the <i>silent.xml</i> template file.</p><p><b>Note:</b> You can also include the <code>-log=full_path_to_log_file</code> option in the command line to create a verbose installation log. For example:</p><pre>platformXXX_upgrade_solaris.bin -mode=silent -silent_xml=/home/silent.xml -log=/home/logs/platform_install.log</pre><p>In this filename, <i>XXX</i> represents the version number of the software you are installing. For more information on creating a log file, see <a href="#">“Generating a Verbose Installation Log” on page 1-24</a>.</p><p>The installation program begins to install the upgrade.</p></li></ol>

**Table 7-4 Starting the Upgrade Installer in Silent Mode (Continued)**

To start the upgrade installation process on this platform . . .	Perform the following steps . . .
	<p><b>For installers with filenames ending in <code>.jar</code>:</b></p> <ol style="list-style-type: none"> <li>1. Include the <code>bin</code> directory of the appropriate Java 2 SDK at the beginning of the <code>PATH</code> variable definition on the target system. For example:  <pre>PATH=JAVA_HOME/bin:\$PATH export PATH</pre> <p>Here <code>JAVA_HOME</code> is the full path to the Java 2 SDK directory.</p> </li> <li>2. Go to the directory in which you downloaded the installation file and invoke the installation procedure by entering the following command:  <pre>java -jar filename.jar -mode=silent -silent_xml=/path_to_silent.xml</pre> <p>Here, <code>filename.jar</code> is the name of the upgrade installer you downloaded from the BEA Customer Support Web site (for example <code>pj_platformXXX_upgrade_generic.jar</code>, where <code>XXX</code> represents the version number of the software you are installing) and <code>path_to_silent.xml</code> is the <i>full</i> path to the <code>silent.xml</code> template file.</p> <p><b>Note:</b> You can also include the <code>-log=full_path_to_log_file</code> option in the command line to create a verbose installation log. For example:  <pre>pj_platformXXX_upgrade_generic.jar -mode=silent -silent_xml=/home/silent.xml -log=/home/logs/platform_install.log</pre> <p>For more information, see <a href="#">“Generating a Verbose Installation Log”</a> on page 1-24.</p> </p></li> </ol> <p>The installation program begins to install the upgrade.</p>

## Creating a Silent-Mode Upgrade Installation XML File

When you upgrade WebLogic Platform in silent mode, the installation program uses an XML file (`silent.xml`) to determine which BEA Home directory contains the installation to be upgraded. Therefore, before you can run the upgrade installation program in silent mode, you must first create a `silent.xml` file.

**Notes:** If you created a `silent.xml` file when you initially installed WebLogic Platform, you should store it in a safe location or make a backup copy of it so that you do not accidentally overwrite

it with the `silent.xml` file you are creating for your upgrade installation. Alternatively, you can name your upgrade file using a different file name, for example `silent_upgrade.xml`.

Incorrect entries in the `silent.xml` file can cause installation failures. To help you determine the cause of a failure, we recommend that you create a log file when you start the installation.

To create a `silent.xml` file for use in the silent-mode upgrade installation process, follow these steps:

1. In a supported browser, display the XML template file for silent-mode upgrade installation. The sample template file, `silent_upgrade.xml`, is available at the following URL:

[http://e-docs.bea.com/platform/docs81/install/scripts/silent\\_upgrade.xml](http://e-docs.bea.com/platform/docs81/install/scripts/silent_upgrade.xml)

This sample `silent_upgrade.xml` file is also presented in the following section. See “[Sample Template File for Silent-Mode Upgrade Installation](#)” on page 7-18.

2. In the popup window that is displayed, choose **File—Save As...**
3. Specify the file name `silent_upgrade.xml` and save it in the directory containing the upgrade installation program that you downloaded from the BEA Customer Support Web site.

**Note:** The XML definition (`<?xml version="1.0" encoding="UTF-8"?>`) must be at the very beginning of the template file. There cannot be any spaces or line breaks before the XML definition.

4. In the `silent_upgrade.xml` file, replace the value for the `BEAHOME` keyword with the full pathname of the BEA Home directory associated with the particular installation of WebLogic Platform that you want to update and save the file.

**Note:** You must follow XML guidelines for characters when modifying values. That is, you cannot use characters reserved for use in XML, such as `<`, `>`, `[`, and `]`.

## Sample Template File for Silent-Mode Upgrade Installation

```
<?xml version="1.0" encoding="UTF-8" ?>
<domain-template-descriptor>
  <input-fields>
    <data-value name="BEAHOME" value="c:\bea" />
  </input-fields>
</domain-template-descriptor>
```

## Uninstalling Maintenance Upgrades Using Smart Update

At times you may want to uninstall a maintenance upgrade. You can use Smart Update to revert your system installation to an earlier version of the release as follows:

- You can revert to the prior service pack installation on your system. For example, if you first install WebLogic Platform 8.1 Service Pack 4 (SP4), and then install Service Pack 5, you can later revert to WebLogic Platform 8.1 SP4.  
  
**Note:** If you revert to an earlier service pack, user-created domains may not work with the earlier service pack because of changes made in the `config.xml` file between service packs. If you made backup copies of the `config.xml` files in the earlier service pack, you should use them after you revert the installation.
- You can revert a rolling patch upgrade to the service pack on which the rolling patch is based. (Rolling patches are cumulative: each rolling patch replaces all earlier rolling patches on a particular service pack base.) For example, if you first install WebLogic Platform 8.1 SP4, and then install rolling patches 1 and 2 (RP1 and RP2), you can later revert to WebLogic Platform 8.1 SP4. You cannot revert to an earlier rolling patch, however.

**Note:** If you modify an upgraded installation by installing or uninstalling any WebLogic Platform components, you cannot roll back to any previous versions of the product.

You can also uninstall a service pack or rolling patch using the standard uninstallation process. For details, see [Chapter 8, “Uninstalling WebLogic Platform.”](#)

To uninstall a service pack or rolling patch using Smart Update, follow these instructions:

1. Start Smart Update as described in [Table 7-1, “Starting Smart Update,” on page 7-4](#).
2. In the left pane, select the release for the product you want to roll back.

Service packs and rolling patches that you can uninstall (or roll back) are displayed in the Downgrade Options section of the window.

3. In the Downgrade Options pane, select the service pack or rolling patch that you want to uninstall and click OK.

The BEA Uninstaller Program opens and the Welcome window is displayed.

4. Click Next to proceed.

A status window displays the progress of the uninstall process. A message is displayed when the rollback or uninstallation is complete.

5. Click Done on the status window.

The Smart Update window is displayed. Choose File→Exit to close the Smart Update window.

## Upgrading Web Server Plug-Ins

If you are using a Web server with your WebLogic Platform installation, it is important that you keep your Web server up to date to ensure you have all the latest security patches and support. Updated Web server plug-ins are included when you upgrade your WebLogic Server installation. Although it is not required, you may want to replace the Web server plug-ins installed with your Web server with the updated versions.

For details about installing the Web server plug-ins, see *Using Web Server Plug-Ins with WebLogic Server* at the following URL:

<http://e-docs.bea.com/wls/docs81/plugins/index.html>



# Uninstalling WebLogic Platform

The following sections provide platform-specific procedures for uninstalling WebLogic Platform:

- [About the Uninstallation Program](#)
- [Uninstalling WebLogic Platform in Graphical Mode](#)
- [Uninstalling WebLogic Platform in Console Mode](#)
- [Uninstalling WebLogic Platform in Silent Mode](#)
- [Uninstalling a Service Pack or Rolling Patch in Graphical Mode](#)
- [Uninstalling a Service Pack or Rolling Patch in Console Mode](#)
- [Reinstalling WebLogic Platform](#)

## About the Uninstallation Program

The following sections describe how to uninstall WebLogic Platform on Windows and UNIX systems. You can uninstall WebLogic Platform using graphical mode or console mode, or silent mode. To run the graphical mode uninstallation program, your console must support a Java-based GUI. If the uninstallation program determines that your system cannot support a Java-based GUI, it automatically starts running in console mode.

You can uninstall individual components of WebLogic Platform, or the entire installation. Dependency checking in the uninstaller ensures that the appropriate components are uninstalled.

Uninstalling WebLogic Platform does not remove the BEA Home directory associated with the installation, the SDK, or any user-created domains. Only the components that were installed by the

installation program can be removed. If you choose to uninstall the entire WebLogic Platform installation, the uninstallation program also removes the WebLogic Platform product directory associated with the installation *unless* one of the following is true:

- The product directory contains customer-created configuration or application files—the *uninstallation program does not delete customer-created configuration or application files or domains*.
- The complete installation was not uninstalled. If an individual component is uninstalled, only the installation directory for that component is removed; the installation directories for other components are unaffected.
- The uninstall was invoked from within the product directory structure—specifically, within the `uninstaller` directory.

## Uninstalling Service Packs and Rolling Patches

If you have installed a service pack or rolling patch, you can revert your system installation to an earlier version of the release as follows:

- You can revert to the prior service pack installation on your system. For example, if you first install WebLogic Platform 8.1 Service Pack 4 (SP4), and then install Service Pack 5, you can later revert to WebLogic Platform 8.1 SP4.

**Note:** If you revert to an earlier service pack, user-created domains may not work with the earlier service pack because of changes made in the `config.xml` file between service packs. If you made backup copies of the `config.xml` files in the earlier service pack, you should use them after you revert the installation.

- You can revert a rolling patch upgrade to the service pack on which the rolling patch is based. (Rolling patches are cumulative: each rolling patch replaces all earlier rolling patches on a particular service pack base.) For example, if you first install WebLogic Platform 8.1 SP2, and then install rolling patches 1 and 2 (RP1 and RP2), you can later revert to WebLogic Platform 8.1 SP2. You cannot revert to an earlier rolling patch, however.

**Note:** If you install additional WebLogic Platform components after installing a service pack or rolling patch, you cannot roll back to any previous versions of the product.

To revert to a previously installed version of WebLogic Platform, you can use the uninstallation program or Smart Update. See [“Uninstalling Maintenance Upgrades Using Smart Update” on page 7-19](#) for instructions on using Smart Update to roll back to a previous installation.

## Uninstalling WebLogic Platform in Graphical Mode

Use the following procedure to uninstall WebLogic Platform or individual components in graphical mode:

1. Shut down any servers that are running. If any of these servers is configured as a Windows service, you should stop the service(s) before uninstalling the software.
2. Start the uninstallation program as described in [Table 8-1](#).

**Table 8-1 Starting the Uninstallation Program in Graphical Mode**

To start the uninstallation program on this platform . . .	Perform the following steps . . .
Windows	<ol style="list-style-type: none"> <li>1. From the Windows Start menu, choose Start→Programs→BEA WebLogic Platform 8.1→Uninstall WebLogic Platform 8.1. The WebLogic Platform Uninstaller Welcome window is displayed.</li> <li>2. Proceed to step 3.</li> </ol>
UNIX	<ol style="list-style-type: none"> <li>1. Go to the following directory: <code>WL_HOME/uninstall</code> Here <code>WL_HOME</code> represents the directory in which you installed WebLogic Platform.</li> <li>2. Enter <code>uninstall.sh</code> at the prompt. The WebLogic Platform Uninstaller Welcome window is displayed.</li> </ol> <p><b>Note:</b> If your system supports a graphical user interface, the uninstallation program starts in graphical mode. If your system does not support a graphical user interface, the uninstallation program starts in console mode. If console mode is started, see <a href="#">“Uninstalling WebLogic Platform in Console Mode” on page 8-4</a> for instructions.</p>

3. Click Next to start the uninstall program.

One of the following windows is displayed:

- The Choose Components window—go to step 4.
- The Select Uninstall Type window—If you have installed a service pack or rolling patch, you can roll back your system installation to the previous service pack. To uninstall WebLogic Platform, select Uninstall WebLogic Platform and continue to the next step. If you want to

uninstall a service pack or rolling patch, see [“Uninstalling a Service Pack or Rolling Patch in Graphical Mode” on page 8-8](#).

4. Select the components to uninstall by selecting or clearing the appropriate check boxes. Then click Next. By default, all installed components are selected, indicating that they will be removed.
5. Click Done in the Uninstalling WebLogic Platform 8.1 window to exit the uninstallation program.

# Uninstalling WebLogic Platform in Console Mode

Use the following procedure to uninstall WebLogic Platform or individual components using the command line interface:

1. Shut down any servers that are running. If any of these servers is configured as a Windows service, you should stop the service(s) before uninstalling the software.
2. Start the uninstallation program as described in [Table 8-2](#).

**Table 8-2 Starting the Uninstallation Program in Console Mode**

To start the uninstallation program on this platform . . .	Perform the following steps . . .
Windows	<ol style="list-style-type: none"><li>1. Open an MS-DOS command prompt window and go to the following directory: <code>WL_HOME\uninstall</code> Here <i>WL_HOME</i> represents the directory in which you installed WebLogic Platform, typically <code>C:\bea\weblogic81</code>.</li><li>2. Enter the following command at the prompt: <code>uninstall -mode=console</code> The Welcome text is displayed.</li></ol>
UNIX	<ol style="list-style-type: none"><li>1. Go to the following directory: <code>WL_HOME/uninstall</code> Here <i>WL_HOME</i> represents the directory in which you installed WebLogic Platform.</li><li>2. At the prompt, enter the following command: <code>sh uninstall.sh -mode=console</code> The Welcome text is displayed.</li></ol>

3. Press Enter or type next to proceed to the next panel of the uninstallation program.

**Note:** Instead of typing complete words when you want to enter [Exit], [Previous], and [Next], you can use the following one-letter shortcuts: x, p, and n, respectively.

One of the following panels is displayed:

- The Choose Components to uninstall panel—go to step 4.
- The Uninstall Options panel—If you have installed a service pack or rolling patch, you can roll back your system installation to the previous service pack. To uninstall WebLogic Platform, type 1 at the prompt and press Enter, then continue to the next step. If you want to uninstall a service pack or rolling patch, see [“Uninstalling a Service Pack or Rolling Patch in Console Mode” on page 8-8](#).

4. Select the components you want to uninstall. The available components are displayed as follows:

Check the WebLogic Platform 8.1.x.0 components you want to uninstall.

```
Release 8.1.x.0
+----WebLogic Server [1] v
|   +----Server [1.1] v
|   +----Server Examples [1.2] v
+----WebLogic Workshop [2] v
|   +----Workshop Runtime Framework [2.1] v
|   +----WebLogic Workshop Application Developer Edition [2.2] v
|   +----Workshop Samples [2.3] v
+----WebLogic Integration [3] v
|   +----Integration Server [3.1] v
|   +----WebLogic Workshop Integration Extension [3.2] v
|   +----Integration Examples [3.3] v
|   +----BPEL Import and Export Tools [3.4] v
|   +----TIBCO Rendezvous(TM) Control and Event Generator [3.5] v
+----WebLogic Portal [4] v
|   +----Portal Server [4.1] v
|   +----WebLogic Workshop Portal Extension [4.2] v
|   +----Portal Examples [4.3] v
+----Platform Samples and Utilities [5] v
|   +----Platform Tour [5.1] v
```

Enter number exactly as it appears in brackets to toggle selection OR  
[Exit] [Previous] [Next] >

By default, all installed components are selected, indicating that they will be removed.

**Note:** If you installed your software using the WebLogic Server installer, only the WebLogic Server and WebLogic Workshop components are displayed.

To leave a component installed on your system, type the numeric code for that component on the command line, exactly as it appears within the brackets. Dependency checking is performed to ensure that you do not uninstall a component that is required by another component. For example, to keep WebLogic Server installed on your system, enter 1 on the command line. The check mark (Windows systems) or x (UNIX systems) beside the entries for WebLogic Server, Server, and Server Examples are cleared, indicating that those components will *not* be uninstalled. The remaining components, WebLogic Integration and WebLogic Portal, are selected, indicating they will be uninstalled.

5. Press Enter or type `next`.

You are prompted to confirm your selections, as shown in the following text:

Choose Components:

```
->1| Yes, uninstall these component selections
    2| No, return to component selection
```

Enter index number to select OR [Exit] [Previous] [Next] >

6. Press Enter or type `next` to proceed with the uninstallation process.
7. When the uninstallation process is complete, press Enter or type `exit` to complete the uninstallation and exit the uninstallation program.

## Uninstalling WebLogic Platform in Silent Mode

When you uninstall WebLogic Platform in silent mode, the full installation of WebLogic Platform is uninstalled. You cannot use silent-mode uninstallation to roll back to a previous service pack or to uninstall individual WebLogic Platform components.

When you run the uninstallation program in silent mode, it leaves behind the same files and directories as when you run the uninstallation program in GUI and console modes, including:

- The BEA Home directory, including the `logs` and `utils` subdirectories
- The Java 2 SDK, if it was installed with WebLogic Platform
- Domain directories, including those in `user_projects`
- Any other file created or modified after WebLogic Platform was installed

You can manually delete these files.

Although you can use silent-mode uninstallation to manually uninstall WebLogic Platform, silent-mode uninstall is intended for use in scripts. You can adapt the steps in [Table 8-3](#) for use in scripts.

Use the following procedure to uninstall WebLogic Platform in silent mode:

1. Shut down any servers that are running. If you configured any of the servers as a Windows service, you must stop the service(s) before uninstalling the software.
2. Start the uninstallation program as described in [Table 8-3](#).

**Table 8-3 Starting the Uninstallation Program in Silent Mode**

To start the uninstallation program on this platform . . .	Perform the following steps . . .
Windows	<ol style="list-style-type: none"> <li>1. Open an MS-DOS command prompt window and go to the following directory:  <code>WL_HOME\uninstall</code>  Here <i>WL_HOME</i> represents the directory in which you installed WebLogic Platform, typically <code>C:\bea\weblogic81</code>.</li> <li>2. Enter the following command at the prompt:  <code>uninstall -mode=silent</code></li> </ol>
UNIX	<ol style="list-style-type: none"> <li>1. Go to the following directory:  <code>WL_HOME/uninstall</code>  Here <i>WL_HOME</i> represents the directory in which you installed WebLogic Platform.</li> <li>2. At the prompt, enter the following command:  <code>sh uninstall.sh -mode=silent</code></li> </ol>

**Notes:** When you run the uninstallation program in silent mode, no messages are displayed indicating the uninstallation is in progress or has completed successfully, even if errors are encountered.

You can include the `-log=full_path_to_log_file` option in the command line to create a verbose installation log. For example:

```
uninstall -mode=silent -log=D:\logs\weblogic_uninstall.log
```

For more information, see [“Generating a Verbose Installation Log” on page 1-24](#).

## Uninstalling a Service Pack or Rolling Patch in Graphical Mode

Use the following procedure to uninstall a WebLogic Platform service pack or rolling patch. You can also use Smart Update to uninstall a service pack or rolling patch. See [“Uninstalling Maintenance Upgrades Using Smart Update” on page 7-19](#).

1. Shut down any servers that are running. If any of these servers is configured as a Windows service, you should stop the service(s) before uninstalling the software.
2. Start the uninstallation program as described in the [Table 8-1, “Starting the Uninstallation Program in Graphical Mode,” on page 8-3](#).

The WebLogic Platform Uninstaller Welcome window is displayed.

3. Click Next to start the uninstall program.

The Select Uninstall Type window is displayed.

4. Select the service pack to which you want to roll back your system installation, and click Next.

A status window displays the progress of the uninstallation. A message is displayed when the rollback is complete.

5. Click Done in the status window.

## Uninstalling a Service Pack or Rolling Patch in Console Mode

Use the following procedure to uninstall a WebLogic Platform service pack or rolling patch. You can also use Smart Update to uninstall a service pack or rolling patch. See [“Uninstalling Maintenance Upgrades Using Smart Update” on page 7-19](#).

1. Shut down any servers that are running. If any of these servers is configured as a Windows service, you should stop the service(s) before uninstalling the software.
2. Start the uninstallation program as described in [Table 8-2, “Starting the Uninstallation Program in Console Mode,” on page 8-4](#).

The Welcome text is displayed.

3. Press Enter or type `next` to proceed to the next panel of the uninstallation program.

The Uninstall Options panel is displayed:

4. At the prompt, type the number of the option for the service pack to which you want to roll back your system installation, and press Enter.

Text messages indicate the progress of the uninstallation.



## Reinstalling WebLogic Platform

You cannot reinstall the same version of WebLogic Platform or any of its components over a previous WebLogic Platform installation of the same components—in the same BEA Home directory or in the same file location. You can, however, add components to an existing installation. For example, you can install WebLogic Server during one installation, and WebLogic Integration or WebLogic Portal during a separate installation.

To reinstall the same version of one of the product components or the entire WebLogic Platform distribution in the same location, you must first uninstall the previous installation.

If you try to install a copy of WebLogic Platform 8.1 in a BEA Home directory that already contains an 8.1 installation, the installation program displays an error message. An example of the error messages displayed is shown in the following table.

<b>If you try to install . . .</b>	<b>In a directory that contains . . .</b>	<b>The following error message is displayed . . .</b>
8.1 SP5	8.1 SP5	A complete installation of WebLogic Platform 8.1 SP5 exists in this BEA Home. Please select another BEA Home or uninstall the product.
8.1 SP5	8.1 SP4	The product maintenance level of the current installer (8.1.5.0) is not compatible with the maintenance level of the product installed on your system (8.1.4.0). Please obtain a compatible installer or perform maintenance on your current system to achieve the desired level.

Click or type **OK** to return to the Choose BEA Home directory prompt.

At the prompt, choose one of the following options:

- To continue installing the software using a different BEA Home directory, select an existing BEA Home directory that does not contain a WebLogic Platform installation or create a new BEA Home directory.
- Exit the installation program. If you want to reinstall WebLogic Platform 8.1 in the same BEA Home, you must uninstall the previous installation. You can invoke the uninstall program appropriate for your platform, as described in one of the following sections:

## Uninstalling WebLogic Platform

- [“Uninstalling WebLogic Platform in Graphical Mode” on page 8-3](#)
- [“Uninstalling WebLogic Platform in Console Mode” on page 8-4](#)

Then reinstall the software as described in one of the following sections:

- [Chapter 2, “Installing WebLogic Platform Using Graphical-Mode Installation”](#)
- [Chapter 3, “Installing WebLogic Platform Using Console-Mode Installation”](#)
- [Chapter 4, “Installing WebLogic Platform Using Silent-Mode Installation”](#)

# Index

## B

- BEA Home directory
  - about 1-19
  - component descriptions 1-20
  - sample structure 1-19

## C

- complete installation 1-17
- console-mode installation
  - UNIX systems 3-4
    - .bin installers 3-4
    - .jar installers 3-6
  - windows systems 3-3
- custom installation 1-17
- customer support contact information x

## D

- database, using an alternate 5-2
- directory structure 5-6
- distribution
  - CD-ROM 1-12
  - methods 1-11
  - Web download 1-11
- documentation, where to find it x
- download methods 1-11

## E

- encryption, 128-bit 1-16

## G

- graphical-mode installation
  - UNIX systems 2-4
    - .bin installers 2-4
    - .jar installers 2-5
  - Windows systems 2-3

## I

- installation
  - console-mode 3-4
  - graphical-mode
    - starting on UNIX systems 2-4
    - starting on Windows systems 2-3
  - silent-mode 4-1, 4-3
- installation log, verbose 1-24
- installation methods 1-5
- installation program
  - about 1-2
  - console-mode description 3-7
  - graphical-mode window descriptions 2-7

## J

- JRockit SDK 1-9

## L

- license
  - about 6-1
  - development 6-2
  - production 6-3
  - scale-limited 6-2
- license.bea

- about 1-22, 6-1
- updating 6-4
- log, verbose 1-24

## N

- net installer 1-11
- node manager 1-18

## P

- package installer 1-11

## Q

- QuickStart, using 5-1

## R

- registry.xml 1-23
- reinstall WebLogic Platform 8-9
- requirements
  - system 1-13
  - temporary disk space 1-14
- rolling patch 7-1

## S

- scale-limited license
  - description 6-2
  - installing 6-7
- sdk directory 1-22
- service pack 7-1
- shortcuts, Windows 5-4
- silent mode
  - uninstall 8-8
  - upgrading in 7-14
- silent.xml 4-4, 4-7, 7-18
  - data values 4-5
  - modifying 4-5, 7-18
- silent-mode installation
  - about 4-1

- creating template file 4-4
- important considerations 4-3
- main steps 4-3
- options 4-5
- sample template 4-7, 7-18
- UNIX systems 4-8
  - .bin installers 4-9
  - jar installers 4-9
- Windows systems 4-8

### Smart Update

- about 1-25
- uninstalling maintenance 7-19
- using 7-3

### software components 1-5

- BEA JRockit SDK 1-9
- WebLogic Integration 1-7
- WebLogic Portal 1-9
- WebLogic Server 1-6
- WebLogic Workshop 1-6

### Start menu 5-4

- system requirements 1-13

## T

### template

- creating silent-mode installation 4-4
- silent-mode sample 4-7, 7-18

## U

### uninstall

- about 8-1
- console mode 8-4
- graphical mode 8-3
- service packs 7-19
- silent mode 8-6

### UNIX installation

- console-mode
  - .bin installers 3-4
  - jar installers 3-6
- graphical-mode
  - .bin installers 2-4

- jar installers 2-5
  - silent-mode
    - .bin installers 4-9
    - jar installers 4-9
- UpdateLicense tool
  - about 1-23
- upgrade 1-25
  - using Smart Update 7-3
  - using upgrade installer 7-6
    - in console mode 7-10
    - in graphical mode 7-7
    - in silent mode 7-14

## **V**

- verbose installation log 1-24

## **W**

- WebLogic Express 1-2
- WebLogic Platform ISV Edition 1-4
- WebLogic Server Process Edition 1-2
- window descriptions
  - Archive Integrity Check 2-10
  - Choose BEA Home Directory 2-7
  - Choose Components 2-8
  - Choose Install Type 2-7
  - Choose Product Directory 2-10
  - Download Status 2-10
  - License Agreement 2-7
  - Specify Download Options 2-9
  - Welcome 2-7
- Windows Start menu 5-4

