



# BEA WebLogic Portal™

## MobileAware Interaction Server Installation Guide

# Copyright

Copyright © 2004-2005 BEA Systems, Inc. All Rights Reserved.

## Restricted Rights Legend

This software and documentation is subject to and made available only pursuant to the terms of the BEA Systems License Agreement and may be used or copied only in accordance with the terms of that agreement. It is against the law to copy the software except as specifically allowed in the agreement. This document may not, in whole or in part, be copied, photocopied, reproduced, translated, or reduced to any electronic medium or machine readable form without prior consent, in writing, from BEA Systems, Inc.

Use, duplication or disclosure by the U.S. Government is subject to restrictions set forth in the BEA Systems License Agreement and in subparagraph (c)(1) of the Commercial Computer Software-Restricted Rights Clause at FAR 52.227-19; subparagraph (c)(1)(ii) of the Rights in Technical Data and Computer Software clause at DFARS 252.227-7013, subparagraph (d) of the Commercial Computer Software--Licensing clause at NASA FAR supplement 16-52.227-86; or their equivalent.

Information in this document is subject to change without notice and does not represent a commitment on the part of BEA Systems. THE SOFTWARE AND DOCUMENTATION ARE PROVIDED "AS IS" WITHOUT WARRANTY OF ANY KIND INCLUDING WITHOUT LIMITATION, ANY WARRANTY OF MERCHANTABILITY OR FITNESS FOR A PARTICULAR PURPOSE. FURTHER, BEA Systems DOES NOT WARRANT, GUARANTEE, OR MAKE ANY REPRESENTATIONS REGARDING THE USE, OR THE RESULTS OF THE USE, OF THE SOFTWARE OR WRITTEN MATERIAL IN TERMS OF CORRECTNESS, ACCURACY, RELIABILITY, OR OTHERWISE.

## Trademarks or Service Marks

BEA, BEA WebLogic Server, Jolt, Tuxedo, and WebLogic are registered trademarks of BEA Systems, Inc. BEA Builder, BEA Campaign Manager for WebLogic, BEA eLink, BEA Liquid Data for WebLogic, BEA Manager, BEA WebLogic Commerce Server, BEA WebLogic Enterprise, BEA WebLogic Enterprise Platform, BEA WebLogic Enterprise Security, BEA WebLogic Express, BEA WebLogic Integration, BEA WebLogic JRockit, BEA WebLogic Personalization Server, BEA WebLogic Platform, BEA WebLogic Portal, BEA WebLogic Server Process Edition, BEA WebLogic Workshop and How Business Becomes E-Business are trademarks of BEA Systems, Inc.

All other trademarks are the property of their respective companies.

# Contents

## MobileAware Interaction Server Installation Guide

About This Manual . . . . .	1
Installing the MobileAware Interaction Server on Microsoft Windows 2000. . . . .	2
Introduction. . . . .	2
License. . . . .	2
Installation Pre-requisites . . . . .	3
Software Pre-Requisites. . . . .	3
Administration Rights . . . . .	3
License. . . . .	3
Installation Procedure for Windows . . . . .	3
Configuring the MobileAware Interaction Server . . . . .	10
Introduction. . . . .	10
Configuring the MobileAware Interaction Server Location . . . . .	10
Creating the Workshop Domain and Installing the Sample Workshop Projects . . . . .	12
Introduction. . . . .	12
Create Mobility Domain . . . . .	12
Create Mobility Application . . . . .	16
Importing the Sample Workshop Mobility Project. . . . .	18
Creating the Portal Domain and Creating the Sample Mobility Portal Project . . . . .	21
Introduction. . . . .	21
Create MobilityPortal Domain . . . . .	21
Create the MobilityPortalApp Application. . . . .	25

Creating the Sample Workshop Mobility Portal Project . . . . .	27
Installing the MobileAware Device Database . . . . .	29
Installing the Device Database from BEA Workshop Tools Menu . . . . .	29
Configuring the Device Emulators . . . . .	31
Introduction . . . . .	31
Next Steps . . . . .	33
Installing the MobileAware Interaction Server on Sun Solaris, RedHat Linux, or HP-UX	33
Introduction . . . . .	33
License . . . . .	33
Installation Pre-requisites . . . . .	34
Software Pre-Requisites . . . . .	34
License . . . . .	35
Installation Procedure for Sun Solaris, RedHat Linux, and HP-UX . . . . .	35
Installing the MobileAware Device Database . . . . .	36
Configuration of a MobileAware Interaction Server-Enabled Web Application . . . . .	36
Post-Installation Configuration and Use of the Administration Tools . . . . .	36
Installing the Device Database . . . . .	36
Introduction . . . . .	36
About the Device Installer Tool . . . . .	37
Locating the Device Installer Tool . . . . .	37
Pre-configuration for Support of IBM Universal DB2 . . . . .	38
Pre-configuration for Support of SQL Server 2000 . . . . .	38
Device Installer Scenario 1: Installing a New MobileAware Device Database . . . . .	39
Device Installer Scenario 2: Using MobileAware's Online Update Service to Update the MobileAware Device Database . . . . .	43
Device Installer Scenario 3: Updating an Existing MobileAware Device Database from an XML File . . . . .	49

Device Installer Scenario 4: Backup an Existing MobileAware Device Database to an XML File . . . . .	55
Configuring mis.properties Settings . . . . .	57
The mis.properties File. . . . .	57
Configuring the MobileAware Device Database Connection . . . . .	57
Configuration of XML File-based MobileAware Device Database . . . . .	60
Next Steps . . . . .	63

# MobileAware Interaction Server Installation Guide

## About This Manual

This document describes the process for installing and configuring the MobileAware Interaction Server, BEA WebLogic Edition.

Please read this document before commencing installation to ensure you comply with the installation pre-requisites and have access to relevant installation configuration information.

The document is split into two parts:

### **Installing the MobileAware Interaction Server on Microsoft Windows 2000**

This section describes the installation and configuration of:

1. The MobileAware Interaction Server, BEA WebLogic Edition, including the Mobility Extension for BEA WebLogic Workshop 8.1 on Microsoft Windows 2000.
2. A BEA Sample Workshop Mobility Project used to illustrate how to use the features provided by the Mobility Extension.
3. A BEA Sample Mobility Portal Project for BEA WebLogic Platform 8.1, demonstrating the features of MobileAware's Mobilized BEA WebLogic Portal Framework solution.

The section also describes:

- Configuration of device emulators in BEA WebLogic Workshop
- Creating the necessary Domains and Applications required for importing the sample projects using the BEA Configuration Wizard

- Importing the Sample Projects into BEA WebLogic Workshop
- Installing the MobileAware Device Database with BEA WebLogic Workshop

### **Installing the MobileAware Interaction Server on Sun Solaris, RedHat Linux, or HP-UX**

This section describes the installation and configuration of:

1. The MobileAware Interaction Server, BEA WebLogic Edition on Sun Solaris, RedHat Linux and HP-UX
2. The MobileAware Device Database

## **Installing the MobileAware Interaction Server on Microsoft Windows 2000**

This section explains the installation procedure for installing the MobileAware Interaction Server, BEA WebLogic Edition for BEA WebLogic Platform 8.1 on Microsoft Windows 2000.

### **Introduction**

The BEAMAInteractionServer814-win.exe installation program is used to install the MobileAware Interaction Server, BEA WebLogic Edition on Microsoft Windows 2000.

It also installs the MobileAware Mobility Extension for BEA WebLogic Workshop 8.1 and places copies of the Sample Projects for BEA WebLogic Platform 8.1 on your hard drive so that they can later be imported into BEA WebLogic Workshop Applications.

### **License**

You must update your BEA License with the MobileAware Interaction Server, BEA WebLogic Edition product component details. The required product component information is available for download from the BEA Web Site at the same location as the software installers.

Once you have updated your license, you will be able to develop and test mobile-device ready content. If you have a developer or evaluation BEA License, the software installers will install an evaluation version of the MobileAware Device Database enabling testing on a number of popular device emulators as well as a number of popular mobile and PDA devices. A production license must be present to install and utilise the full MobileAware Device Database. Note: An invalid license will result in HTML being delivered.

Please contact a BEA or MobileAware sales representative if you wish to extend your evaluation or developer license or upgrade to a production license.

## Installation Pre-requisites

### Software Pre-Requisites

The following software must be installed prior to installing the MobileAware Interaction Server, BEA WebLogic Edition:

- BEA WebLogic Platform 8.1SP2, SP3 or SP4, including:
  - BEA WebLogic Application Server
  - BEA Workshop
  - PointBase database
- Internet Browser:
  - Netscape 4.75 or higher, or
  - Internet Explorer 5 or higher
- Windows 2000
- Java JDK / JRE 1.4.1 or 1.4.2 should be on the search path, with JAVA\_HOME set correctly

### Administration Rights

This installation program requires administration rights on the machine in order to complete the installation.

### License

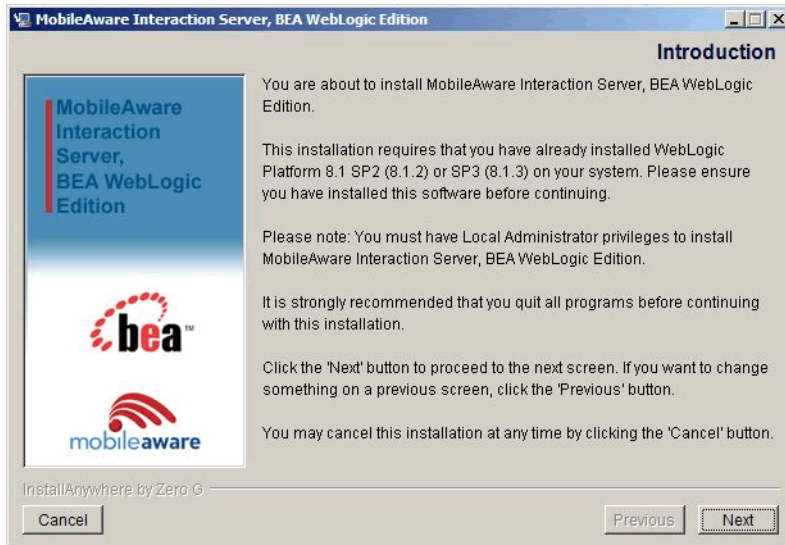
Ensure that you have updated your BEA License with the MobileAware Interaction Server, BEA WebLogic Edition product component details. The required license component information can be downloaded from the same download page as the software installer.

## Installation Procedure for Windows

1. Run the BEAMAInteractionServer814-win.exe installation program.
2. When the “Introduction” screen is shown. Click **Next** to continue.



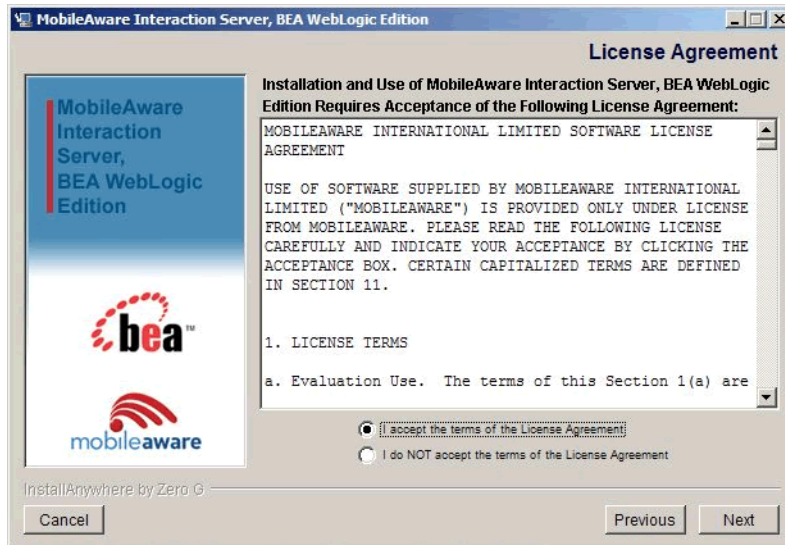
**Figure 1 MobileAware Interaction Server Introduction Screen**



3. On the “License Agreement” screen, read the license agreement and select the I accept the terms of the License Agreement radio button if you are satisfied with the terms. Click Next to continue with the install.

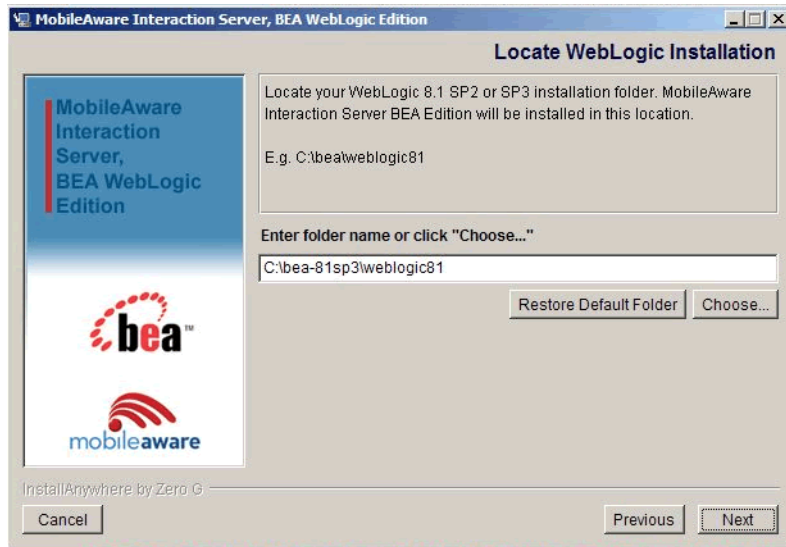
**Note:** The Next button is unavailable if the terms are not accepted.

Figure 2 License Agreement Screen



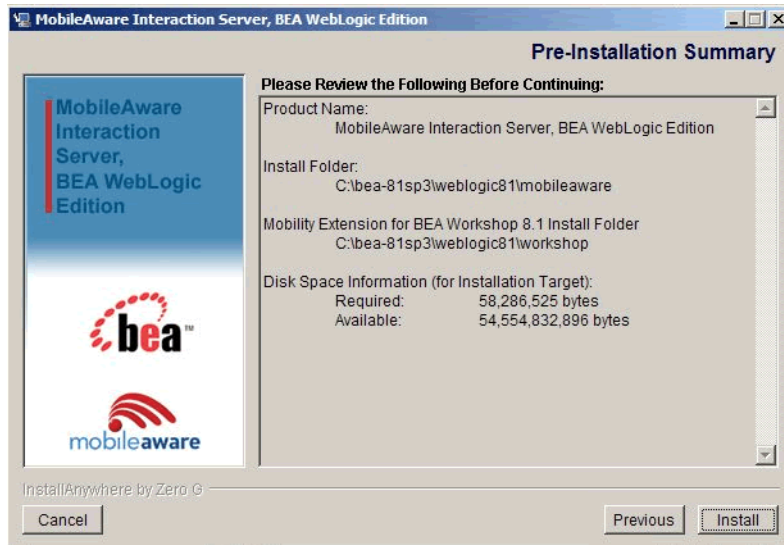
4. On the "Locate WebLogic Installation" screen, enter the location of your WebLogic 8.1 Installation or click Choose to browse to the location.. This is where the MobileAware Interaction Server, BEA WebLogic Edition and the MobileAware Mobility Extension for BEA WebLogic Workshop 8.1 will be installed.
5. Once you have indicated the install folder, click Next to continue.

**Figure 3 Location WebLogic Installation Screen**



6. On the “Pre-Installation Summary Screen”, review the installation configuration information. If the information is correct, click Install. Otherwise, click Previous to go back through the screens and modify the provided information.

Figure 4 Pre-Installation Summary Screen



7. You will now see a series of "Installing MobileAware Interaction Server" screens followed by an "Updating Workshop" screen while the installation and configuration of the MobileAware Interaction Server completes.

**Note:** It really does take several minutes to update the Workshop help files!

Figure 5 Installing MobileAware Interaction Server Screen 1

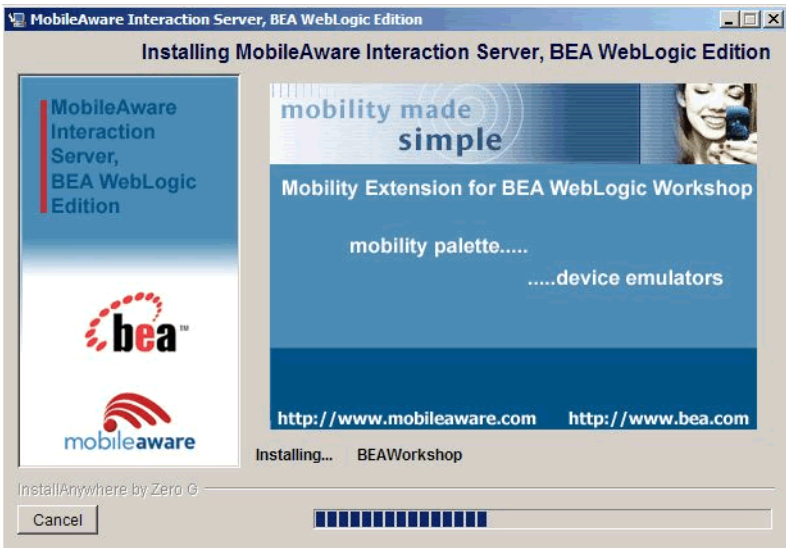
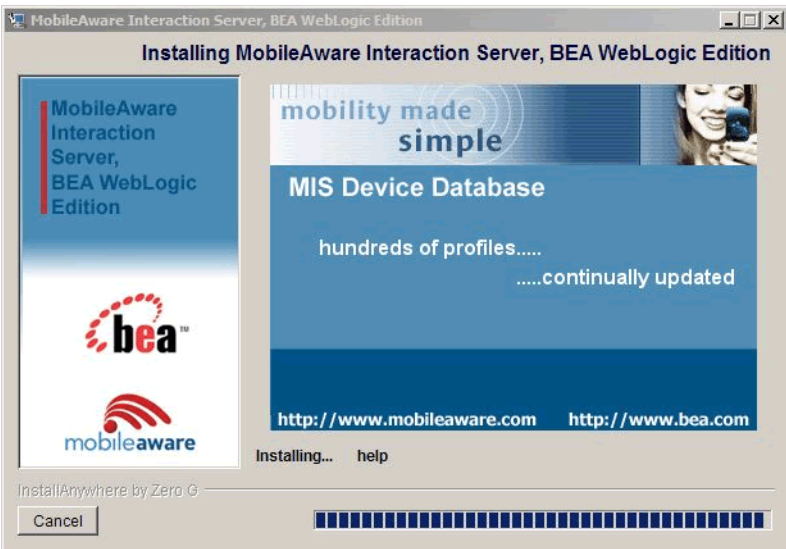


Figure 6 Installing MobileAware Interaction Server Screen 2

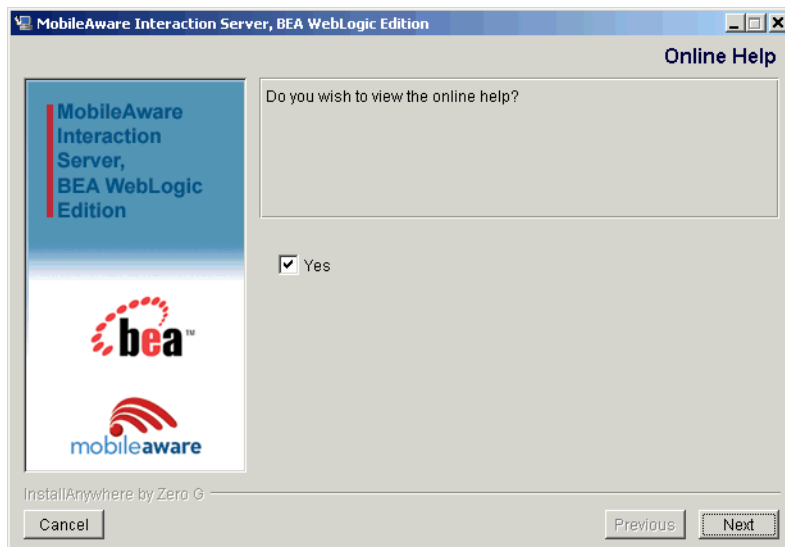


**Figure 7 Please Wait, Updating Workshop Screen**



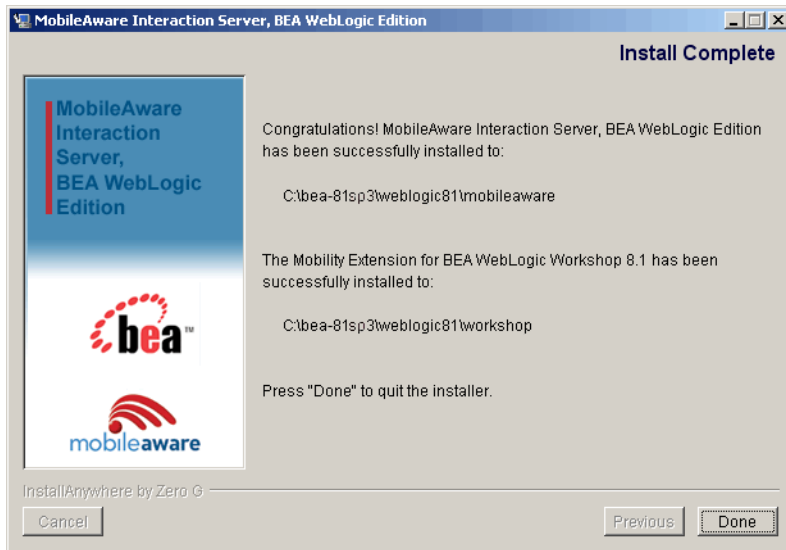
8. The "Online Help" screen will be displayed following a successful install. Check "Yes" to view the online help in Internet Explorer. Click Next

**Figure 8 Online Help Screen**



9. The “Install Complete” screen will be displayed following a successful install. Click Done to exit the installer.

**Figure 9 Installation Complete Screen**



## Configuring the MobileAware Interaction Server

### Introduction

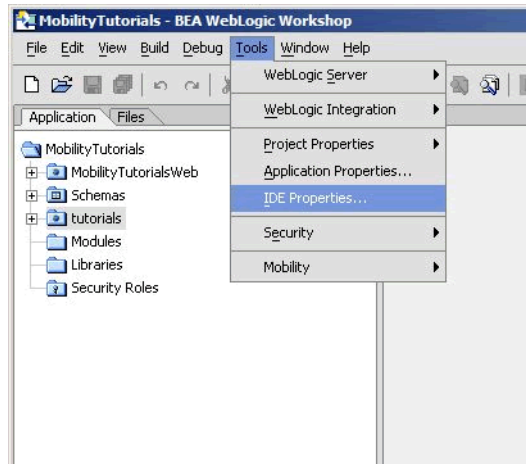
The location of the MobileAware Interaction Server installation was pre-configured during the installation to <bea installation directory>\weblogic81\mobileaware.

For advanced users who may have multiple installations of the MobileAware Interaction Server, this section describes how to re-configure the MobileAware Interaction Server location for use with the MobileAware Sample Projects for BEA Workshop and BEA Portal.

### Configuring the MobileAware Interaction Server Location

To configure the MobileAware Interaction Server location:

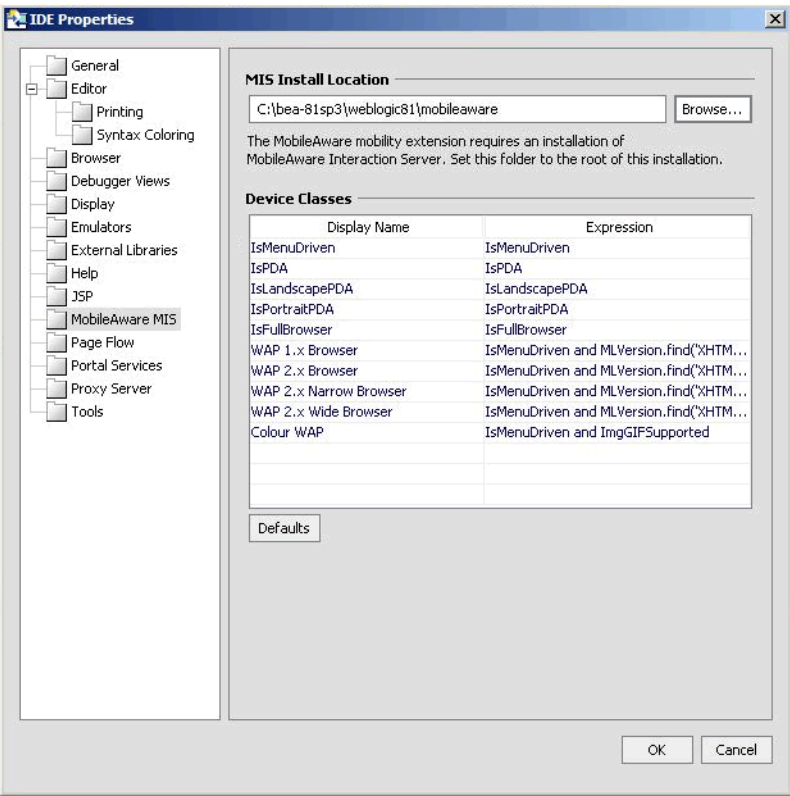
1. Select the MobileAware MIS tab from the IDE Properties within your BEA Workshop Environment (Choose Tools > IDE Properties) and click OK.

**Figure 10 IDE Properties**

2. The location of the MobileAware Interaction Server installation was pre-configured during the installation to <bea installation directory>\weblogic81\mobileaware. To change the location to point at a different MobileAware Interaction Server installation, enter the location of the MobileAware Interaction Server installation in the MIS Install Location field or click Browse to browse to the location. This will enable access to device diagnostic and device management tools from within BEA WebLogic Workshop.



Figure 11 MobileAware Interaction Server Location



# Creating the Workshop Domain and Installing the Sample Workshop Projects

## Introduction

This section describes creating a BEA Workshop Domain, creating a new application, and then importing the provided Sample Workshop Projects into the newly created domain.

## Create Mobility Domain

To create the Mobility Domain:

1. Launch the BEA WebLogic Configuration wizard from the Windows Start menu.

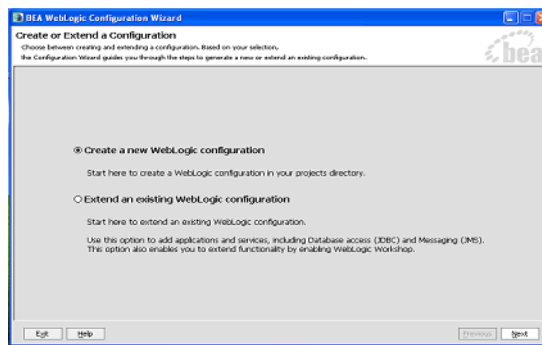
Choose Start > Programs > <BEA install directory> > Configuration Wizard

If you have BEA Workshop open, you can also launch it from the tools menu.

Choose Tools > WebLogic Server > Configuration Wizard

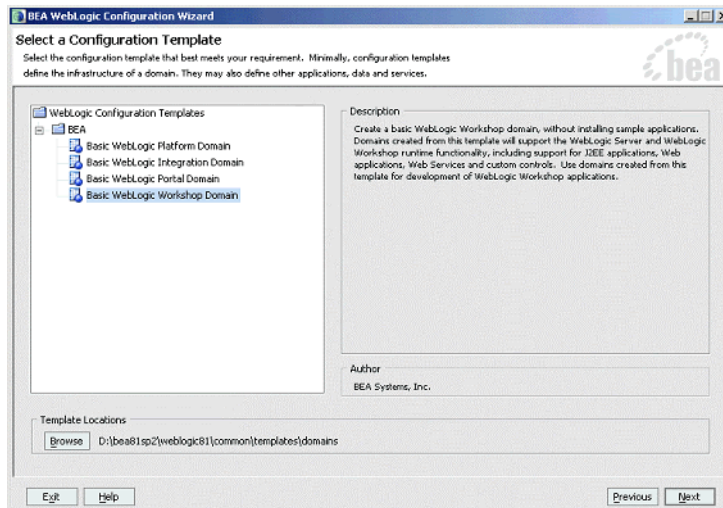
2. Select “Create a new WebLogic configuration” and click Next.

**Figure 12 Configuration Wizard – Create a new WebLogic Configuration**



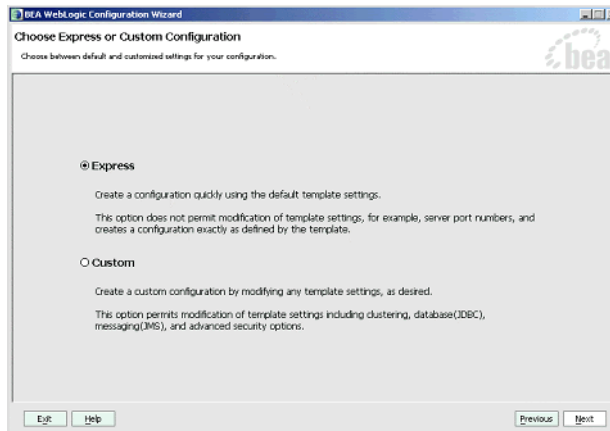
3. In the “Select a Configuration Template screen”, select “Basic WebLogic Workshop Domain” and click **Next**.

**Figure 13 Configuration Wizard – Basic WebLogic Workshop Domain**



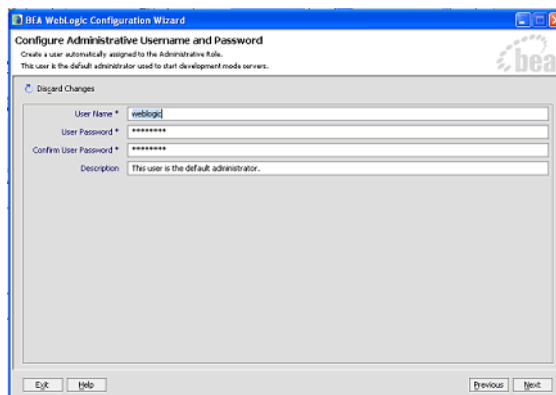
4. On the “Choose Express or Custom Configuration” screen, select “Express” and click Next.

**Figure 14 Configuration Wizard – Express Configuration**



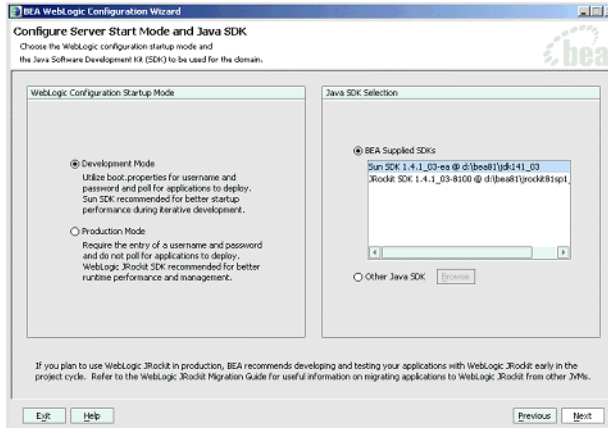
5. On the “Configure Administrative Username and Password” screen enter “weblogic” for username and “weblogic” for password and click Next.

**Figure 15 Configuration Wizard – User Name and Password**



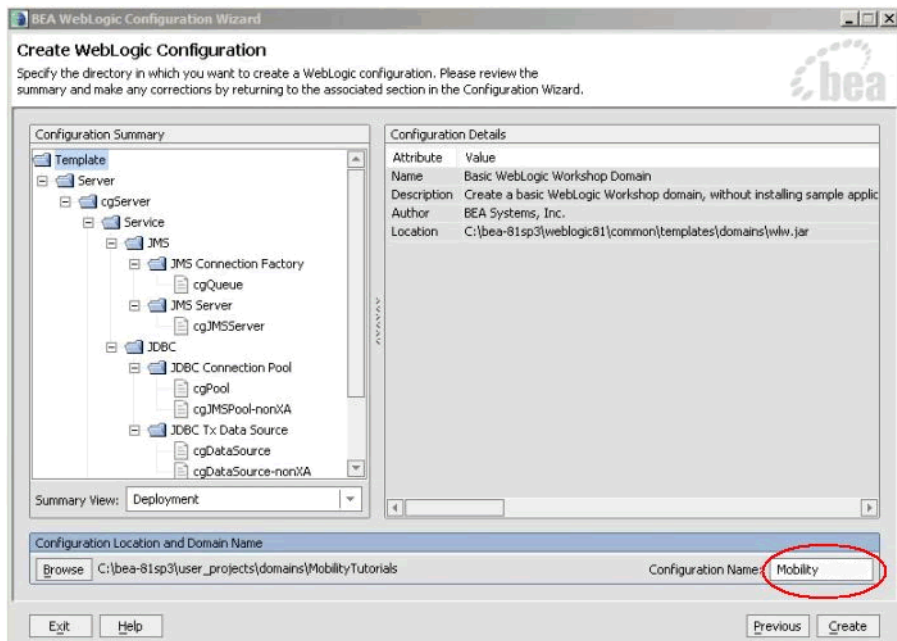
6. On the “Configure Server Start Mode and Java SDK” screen, select Development Modeh within the WebLogic Configuration Startup Mode box.
7. Select the Sun JDK within the Java SDK Selection area and click **Next**.

**Figure 16 Configuration Wizard – Start Mode**



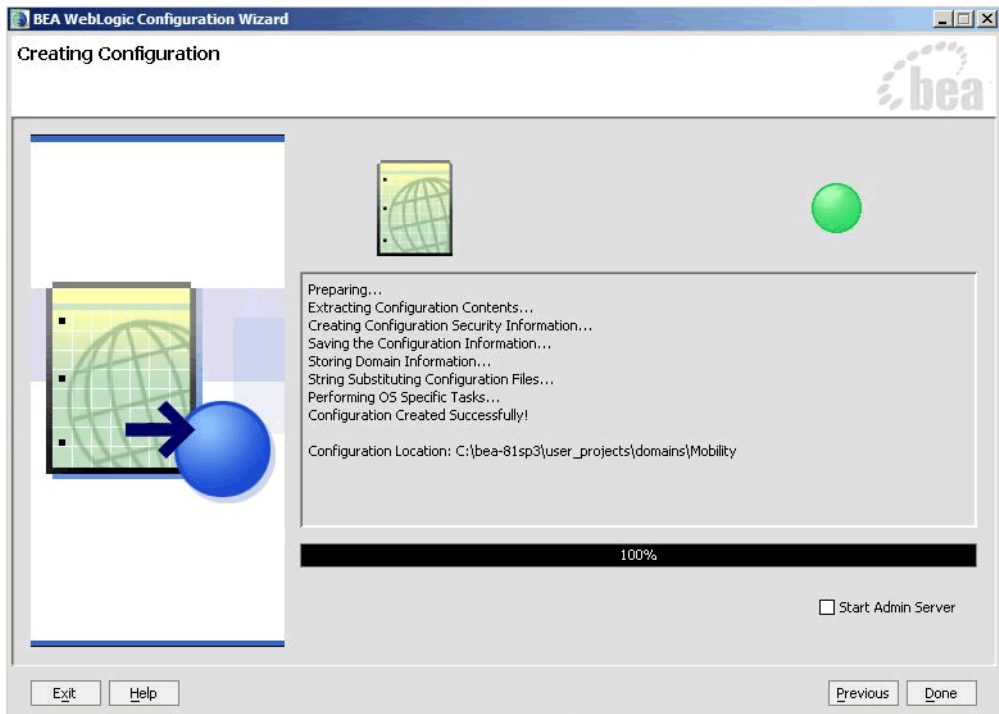
8. On the Create WebLogic Configuration screen, enter **Mobility** in the Configuration Name field and click Create.

**Figure 17 Configuration Wizard – Mobility**



9. The configuration wizard will now create the domain. When it completes, click Done on the Creating Configuration screen.

**Figure 18 Configuration Wizard – Creating Configuration**



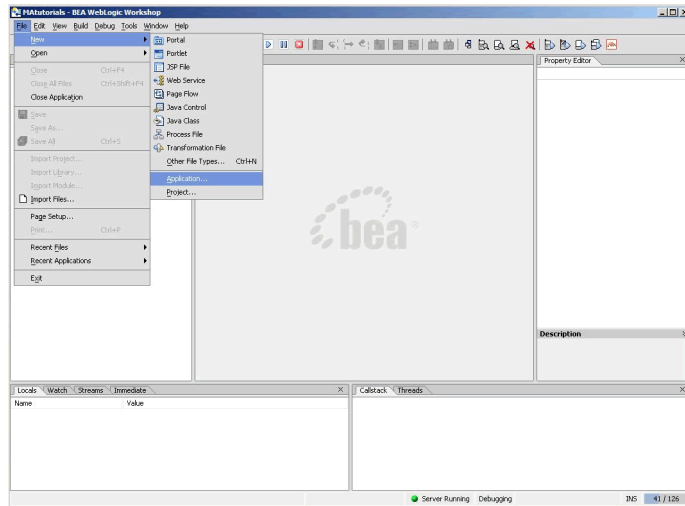
**Note:** When you create a domain using the BEA WebLogic Configuration Manager, a default PointBase database is installed. The MobileAware Device Database will be installed into this database as described in Installing the MobileAware Device Database.

## Create Mobility Application

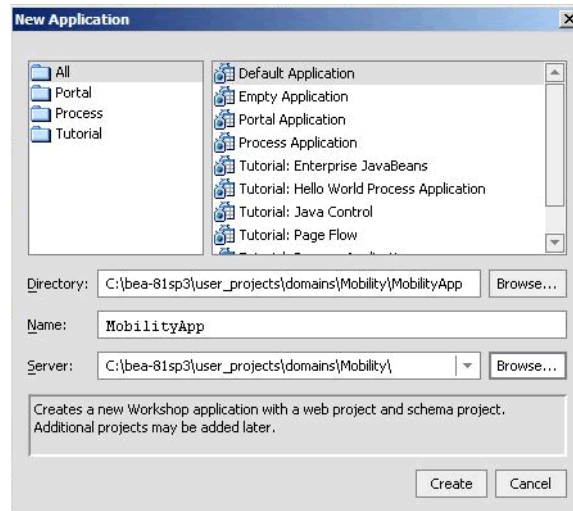
To create the Mobility application:

1. To create a new application in Workshop:  
Choose file > new > application

**Figure 19 Create New Application**



2. From the New Application window:
  - a. Select Default Application
  - b. Click Browse next to the Directory field and browse the Domains directory, selecting your newly created Mobility domain.
  - c. Enter MobilityApp in the Name field – this is the application where you will import the sample mobility application.
  - d. Click Browse next to the Server field and select the config.xml file inside the newly created Mobility domain.
3. Once you have filled in the fields as above, click Create and the application will be created.

**Figure 20 New Application Dialog**

Now that you have created a new Domain and a new Application, you can import the sample Workshop mobility project.

## Importing the Sample Workshop Mobility Project

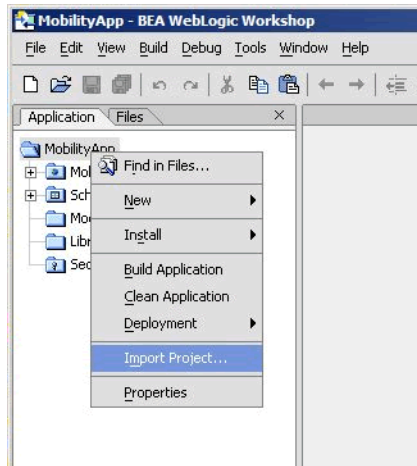
The sample Workshop Mobility project is located in the  
<bea>\weblogic81\mobileaware\samples\BEAWorkshop directory.

Two versions of the project called restaurantWeb and restaurantWeb\_After were installed during the Mobility Extension installation. The restaurantWeb project has not yet been mobilized, while the restaurantWeb\_After project has already been fully mobilized.

You can install the restaurantWeb project as described below and then follow the steps described in the BEA Sample Workshop Mobility Project Guide to mobilize it.

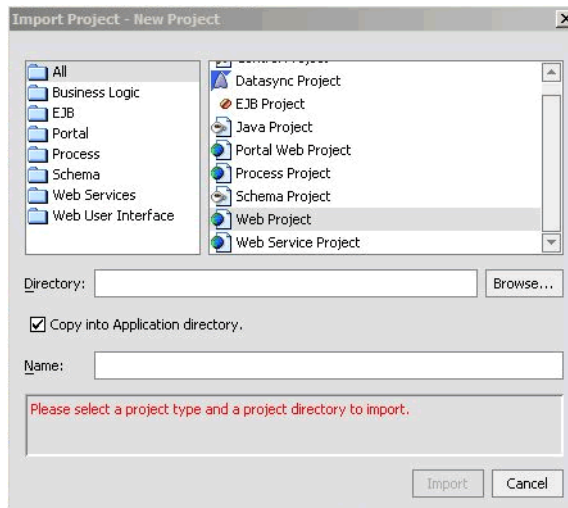
1. Right click the newly created MobilityApp application in the Application tree window.
2. Select Import Project.

**Figure 21 Import Project**



3. On the Import Project – New Project screen, click Browse next to the Directory: field and browse to the <bea>\weblogic81\mobileaware\samples\BEAWorkshop\ directory.

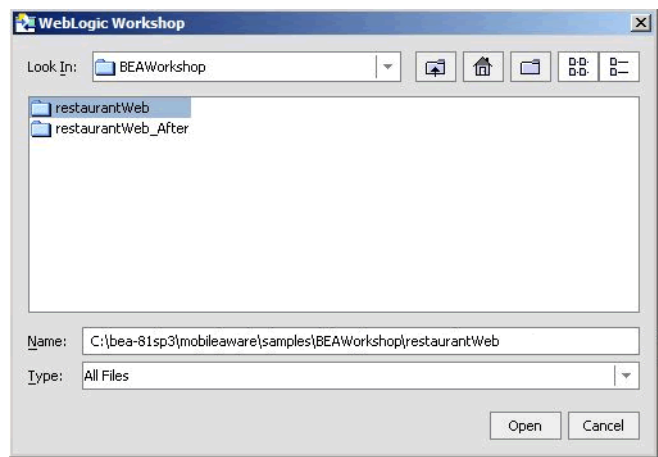
**Figure 22 Import New Project**



4. Select restaurantWeb and click Open.

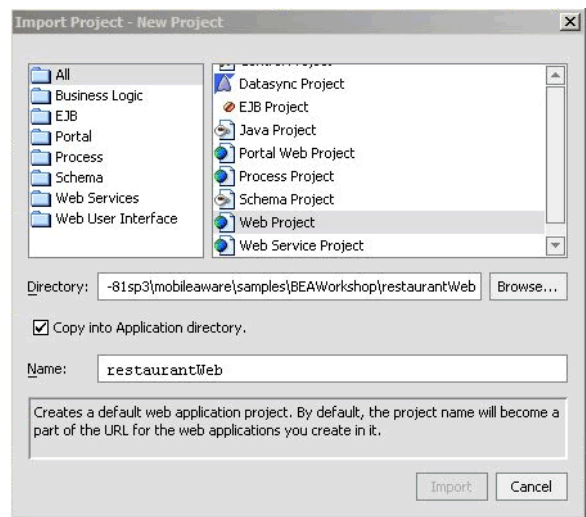


Figure 23 Locate restaurantWeb



- 5. Back on the Import Project - New Project screen, the Directory will now be filled in, with a default Name for the application set to restaurantWeb . Select Web Project from the right hand pane.
- 6. Make sure that Copy into Application Directory is checked.
- 7. Click Import.

Figure 24 Import restaurantWeb project



You can also choose to import the restaurantWeb\_After project to see the final version. The BEA Sample Workshop Mobility Project Guide document explains the steps to mobilize the restaurantWeb project to reach the same results as in the restaurantWeb\_After project.

## Creating the Portal Domain and Creating the Sample Mobility Portal Project

### Introduction

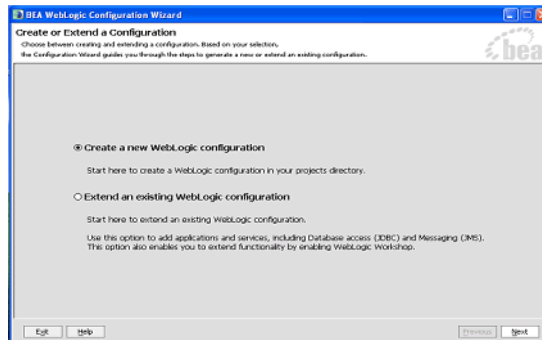
This section describes creating a BEA Portal Domain, creating a new application, and then creating a Sample Mobility Portal Project in the newly created domain using the supplied template.

### Create MobilityPortal Domain

To create the MobilityPortal Domain:

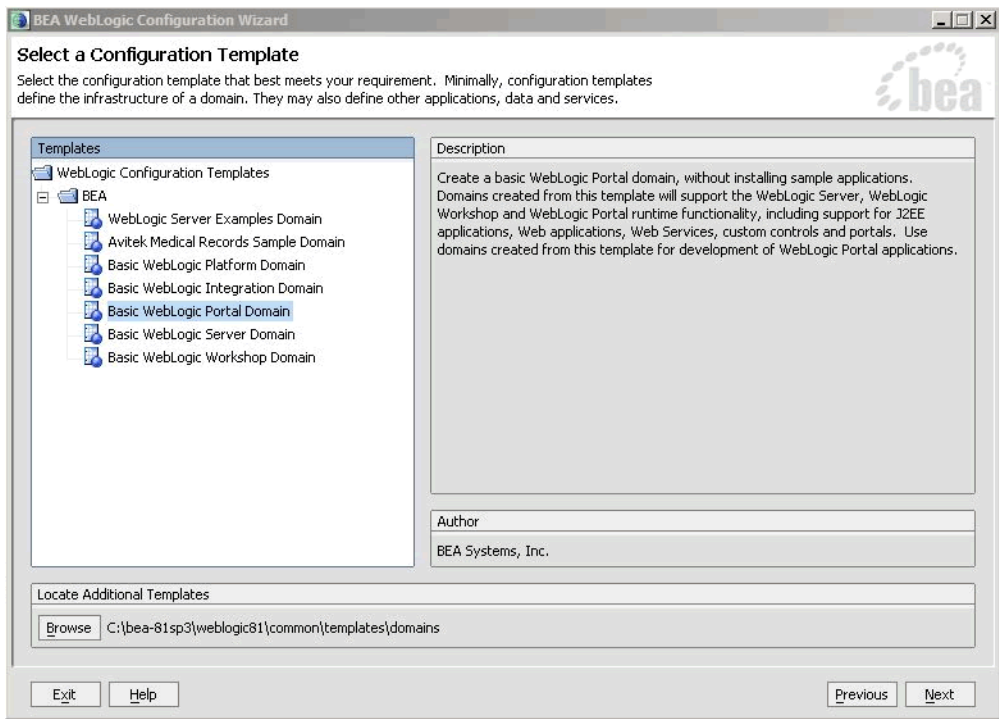
1. Launch the BEA WebLogic Configuration wizard from the Windows Start menu.  
Choose Start > Programs > <BEA install directory> > Configuration Wizard  
If you have BEA Workshop open, you can also launch it from the tools menu.  
Choose Tools > WebLogic Server > Configuration Wizard
2. Select Create a new WebLogic configuration and click **Next**.

**Figure 25 Configuration Wizard – Create a new WebLogic Configuration**



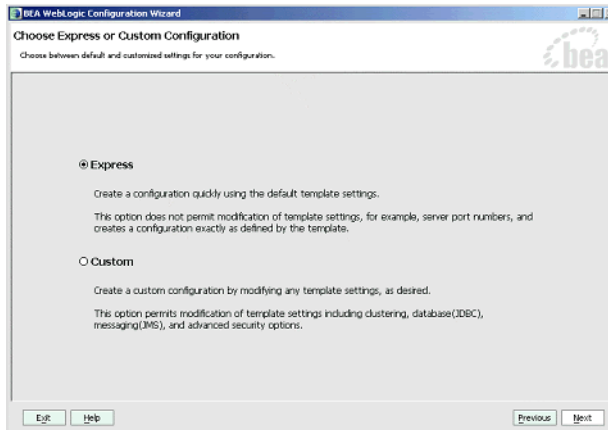
3. On the Select a Configuration Template screen , select Basic WebLogic Portal Domain and click Next.

**Figure 26 Configuration Wizard – Basic WebLogic Portal Domain**



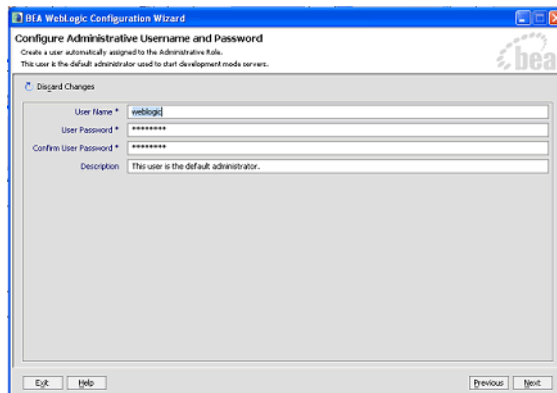
4. On the Choose Express or Custom Configuration screen, select Express and click Next.

**Figure 27 Configuration Wizard – Express Configuration**



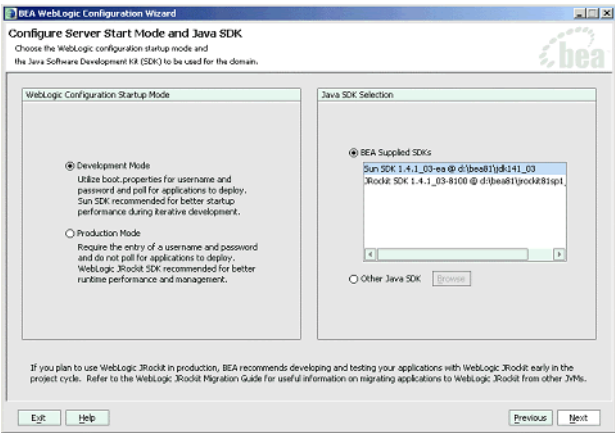
5. On the Configure Administrative Username and Password screen enter weblogic for username and weblogic for password and click Next.

**Figure 28 Configuration Wizard – User Name and Password**



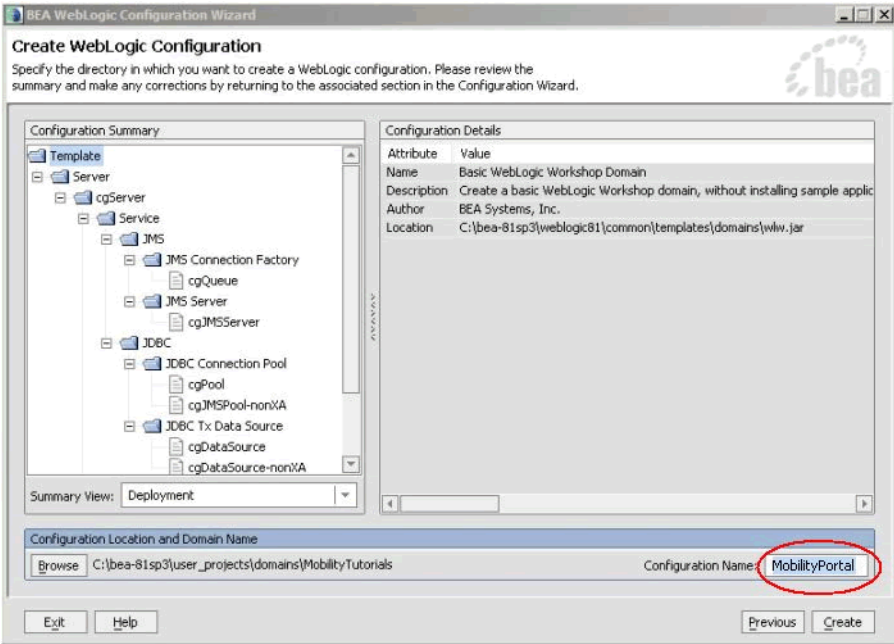
6. In the Configure Server Start Mode and Java SDK screen, select Development Mode within the WebLogic Configuration Startup Mode box.
7. Select the Sun JDK within the Java SDK Selection area and click Next.

Figure 29 Configuration Wizard – Start Mode



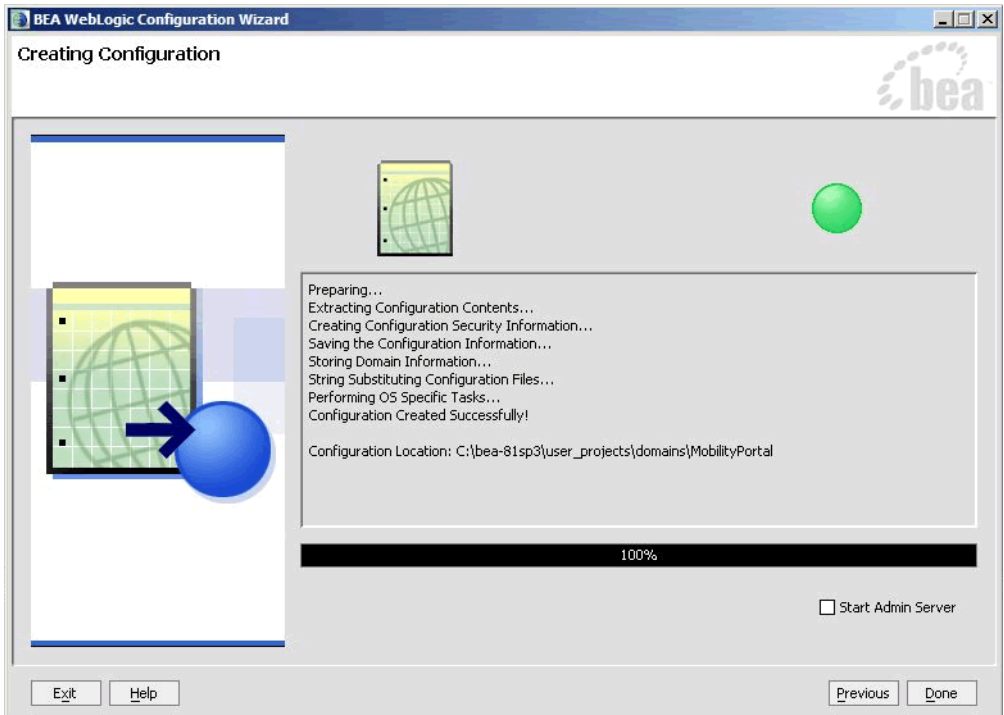
8. On the Create WebLogic Configuration screen, set the Configuration Name to MobilityPortal and click Create.

Figure 30 Configuration Wizard – Mobility Portal



9. The configuration wizard will now create the domain. When it completes, click Done on the Creating Configuration screen.

**Figure 31 Configuration Wizard – Creating MobilityPortal Configuration**



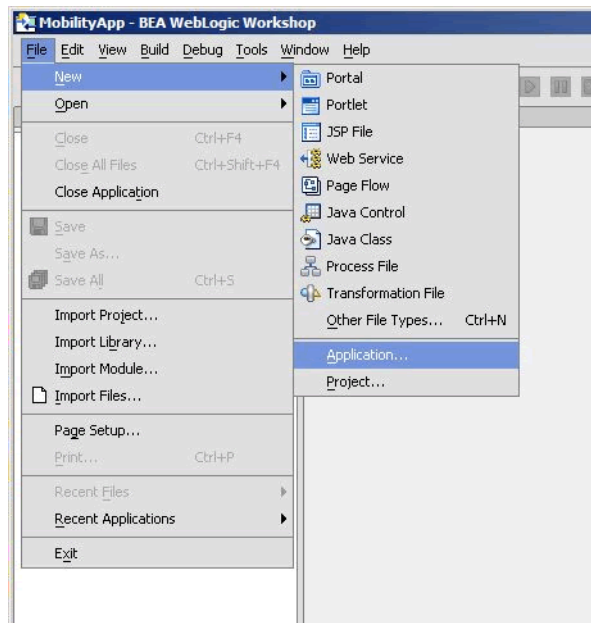
**Note:** When you create a domain using the BEA WebLogic Configuration Manager, a default PointBase database is installed. The MobileAware Device Database will be installed into this database as described in Installing the MobileAware Device Database.

## Create the MobilityPortalApp Application

To create the MobilityPortalApp application:

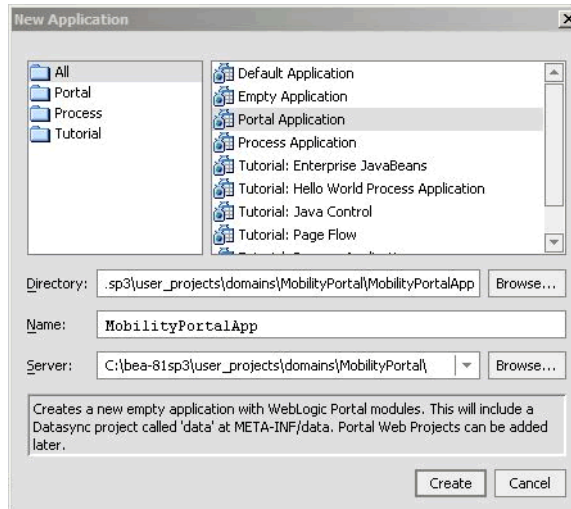
1. To create a new application in Workshop, choose  
file > new > application

**Figure 32 Create New Application**



2. From the New Application window:
  - a. Select Portal Application
 

**Note:** Do not select Default Application as done earlier.
  - b. Click Browse next to the Directory field and browse the Domains directory, selecting your newly created MobilityPortal domain.
  - c. Enter MobilityPortalApp in the Name field – this is the application where you will import the sample mobility portal application.
  - d. Click Browse next to the Server field and select the config.xml file inside the newly created MobilityPortal domain.
3. Once you have filled in the fields as above, click **Create** and the application will be created.

**Figure 33 Create Portal Application Dialog**

Now that you have created a new Domain and a new Portal Application, you can import the sample Workshop mobility portal project.

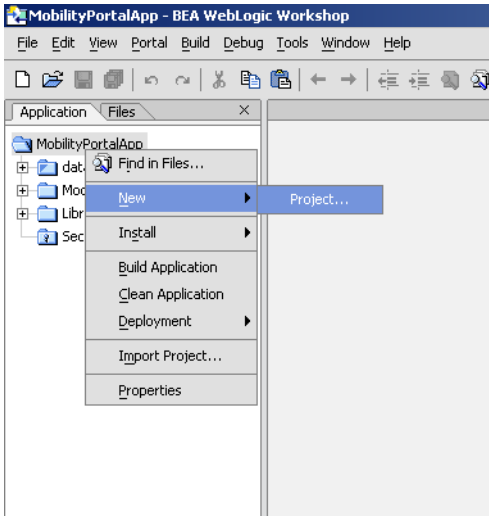
## Creating the Sample Workshop Mobility Portal Project

When MobileAware Interaction Server, BEA WebLogic Edition was installed, a Sample Mobile Portal Project template was created. Create the sample Workshop mobility portal project using this template as described below and then refer to the *BEA Sample Mobility Portal Guide* for an explanation of the features of the sample portal.

1. Right click the newly created `MobilityPortalApp` application in the Application tree window.
2. Select `New > Project`.

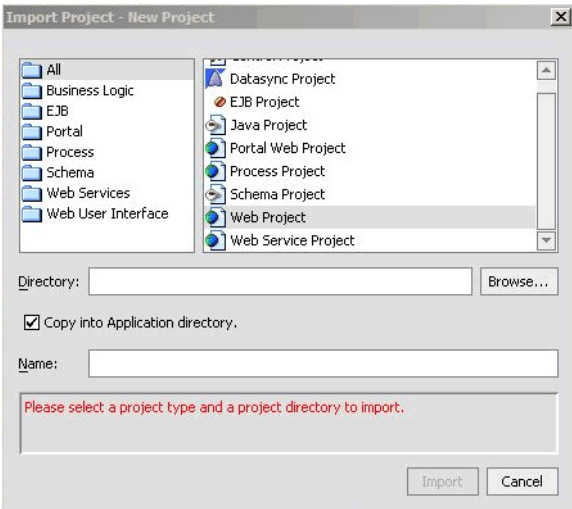


Figure 34 New Portal Project

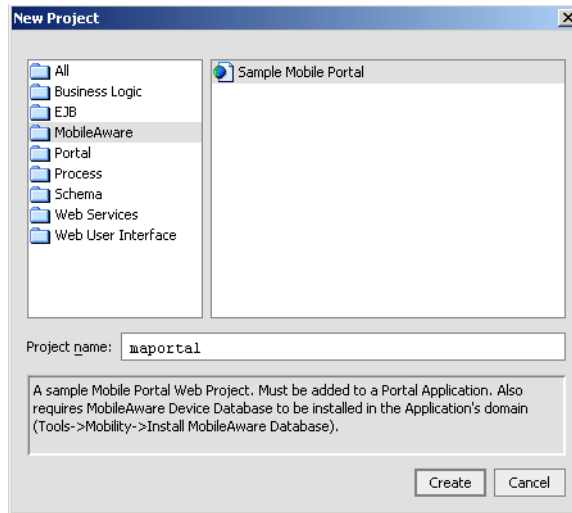


- 3. On the “New Project” screen, select “MobileAware” and “Sample Mobile Portal.”

Figure 35 Import New Project



- 4. Enter “maportal” in the Project Name field.
- 5. Click **Create**.

**Figure 36 Create New Project**

6. Make sure that **Copy into Application Directory** is checked.
7. Click **Import**.

The BEA Sample Mobility Portal Guide document explains the features of the `maportal` sample project.

## Installing the MobileAware Device Database

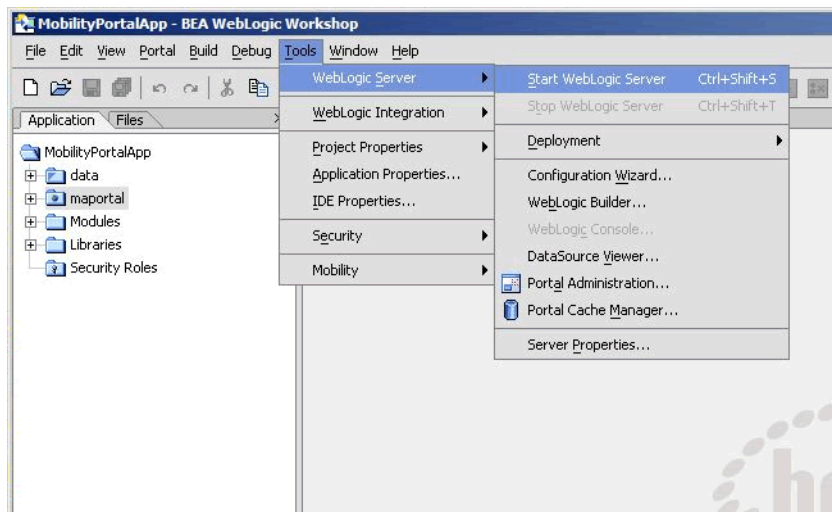
The MobileAware Interaction Server requires a database, the MobileAware Device Database, to store device profile information. The Mobility Extension for BEA WebLogic Workshop enables installation of the Device Database directly into a local PointBase database from the Tools menu in BEA WebLogic Workshop.

## Installing the Device Database from BEA Workshop Tools Menu

When you created the Mobility and MobilityPortal domains using the BEA WebLogic Configuration Manager, a PointBase database was installed. The MobileAware Device Database can be installed in this database as follows:

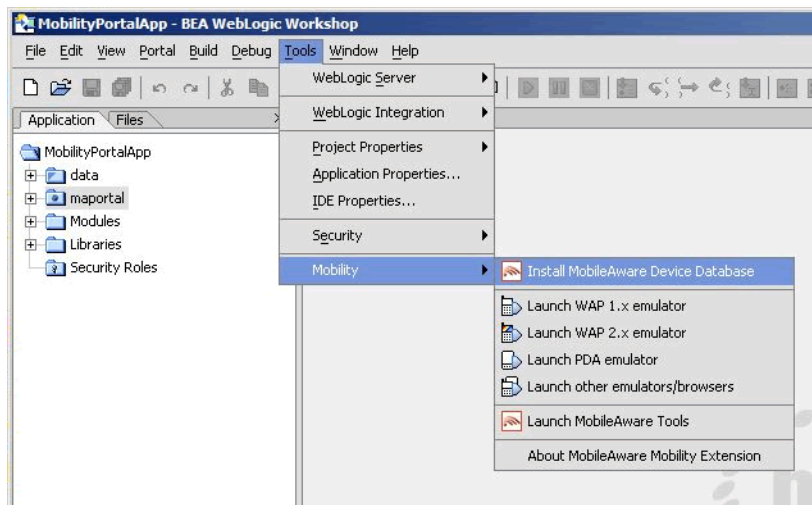
1. Start the WebLogic server for this domain:  
Choose **Tools > WebLogic Server > Start WebLogic Server**

Figure 37 Start BEA WebLogic Server



- 2. Once the server has started, install the MobileAware Device Database:  
Choose Tools > Mobility > Install MobileAware Device Database

Figure 38 Install MobileAware Device Database



- 3. A confirmation pop-up box will be presented, read and click OK to continue.

4. Once successfully installed a popup window will appear with "The MobileAware Device database has been installed ", click OK to continue.

Next, you will need to configure device emulators into your Workshop environment. This is described in the next section.

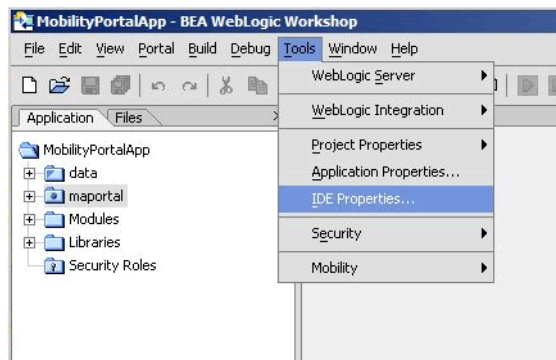
## Configuring the Device Emulators

### Introduction

This section describes how to configure the emulators for use within BEA Workshop. You can use the device emulators to see how the mobilized content will look on a particular device (for example phones, PDAs). Several emulators are available for download free of charge on the Internet. This section describes how to configure the emulators for use within BEA Workshop.

1. To configure the tools and emulators for usage within the BEA Workshop environment, select IDE properties from the Tools Menu.  
Choose Tools > IDE Properties

**Figure 39 Select IDE Properties**



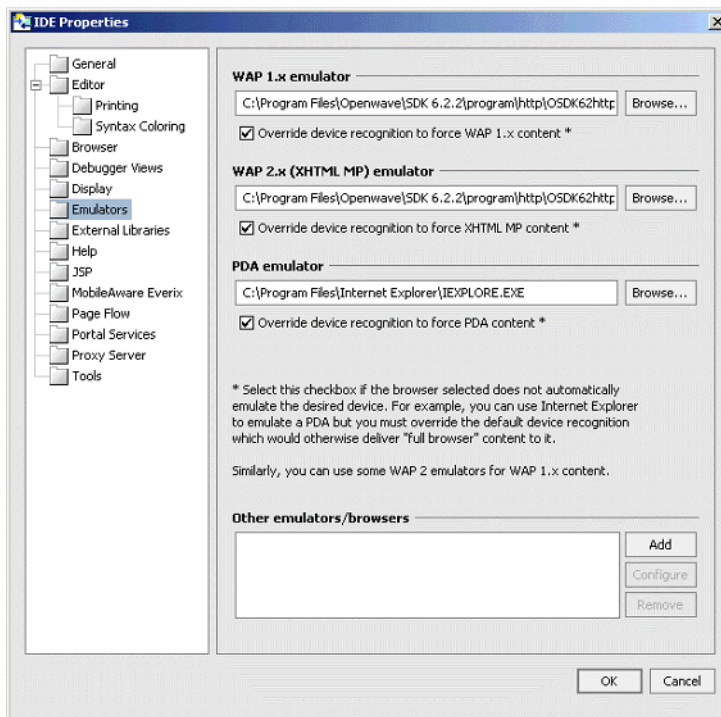
2. Now configure the emulators:
  - a. Select the Emulators tab.
  - b. Select WAP1.x emulator by browsing to the appropriate emulator executable file.

**Note:** MobileAware recommends using the Openwave Emulator, which can emulate WAP 1.x and XHTML-MP devices. However, emulators from Nokia, Ericsson, or others can also be utilised. If using an Openwave Emulator, select the OSDK62http.exe (for version 6.2) or the OSDK61http.exe (for version 6.1) in

the installation directory where you have installed the emulator, for example C:\Program Files\Openwave\SDK 6.1\program\http.

- c. Select WAP2.0 emulator by browsing to the appropriate emulator executable file.
- d. Select PDA emulator by browsing to the appropriate emulator executable file.
  - You can find a MobileAware PDA emulator at  
`<bea>\weblogic81\mobileaware\tools\emulators\mobileaware\pda.exe.`
  - Alternatively, to set up Microsoft Internet Explorer to function as a PDA emulator, browse to your `iexplore.exe` in the PDA emulator text box as can be seen in the diagram below and check the box next to Override device recognition to force PDA content .

**Figure 40 Setting up Internet Explorer as a PDA Emulator**



## Next Steps

Now that you have successfully installed the MobileAware Interaction Server, BEA WebLogic Edition, you are almost ready to begin mobilizing your own web applications and portal projects.

Before you do, it is recommended that you go through the BEA Sample Workshop Mobility Project Guide and the BEA Sample Mobility Portal Guide. The BEA Sample Workshop Mobility Project Guide provides a step-by-step exercise in mobilizing a sample workshop application, while the BEA Sample Mobility Portal Guide illustrates the features of a Mobilized BEA Portal Framework.

## Installing the MobileAware Interaction Server on Sun Solaris, RedHat Linux, or HP-UX

This section explains the installation procedure for installing the MobileAware Interaction Server, BEA WebLogic Edition for BEA WebLogic Platform 8.1 on Sun Solaris, Redhat Linux, and HP-UX 11.

### Introduction

The BEAMAIInteractionServer814-`<platform>`.bin installation program is used to install the MobileAware Interaction Server, BEA WebLogic Edition on.

- For RedHat Linux, use the BEAMAIInteractionServer814-linux.bin installer.
- For Sun Solaris, use the BEAMAIInteractionServer814-solaris.bin installer.
- For HP-UX, use the BEAMAIInteractionServer814-hpux.bin installer. The installer installs the MobileAware Interaction Server, BEA WebLogic Edition into an existing BEA WebLogic installation at `<bea_home>/weblogic81/mobileaware`.

### License

You must update your BEA License with the MobileAware Interaction Server, BEA WebLogic Edition product component details. The required product component information is available for download from the BEA Web Site at the same location as the software installers.

Once you have updated your license, you will be able to develop and test mobile-device ready content. If you have a developer or evaluation BEA License, the software installer will install an evaluation version of the MobileAware Device Database enabling testing on a number of popular

device emulators as well as a number of popular mobile and PDA devices. A production license must be present to install and utilise the full MobileAware Device Database.

**Note:** An invalid license will result in HTML being delivered.

Please contact a BEA or MobileAware sales representative if you wish to extend your evaluation or developer license or upgrade to a production license.

## Installation Pre-requisites

### Software Pre-Requisites

The following software must be installed prior to installing the MobileAware Interaction Server, BEA WebLogic Edition:

- A supported Operating System, from the following list:
  - Sun Solaris 8, 9
  - RedHat Linux 2.1, 3.0
  - HP-UX 11
- BEA WebLogic Platform 8.1SP2, SP3, or SP4
- A Database, from the following list:
  - Oracle 9i
  - PointBase 4.4
  - SQL Server 2000
  - Postgres 7.3.2+
  - Sybase Adaptive Server Enterprise 12.5
  - IBM DB2 Universal Database 8.1
- Internet Browser:
  - Netscape 4.75 or higher, or
  - Internet Explorer 5 or higher
- Java JDK / JRE 1.4.1 or 1.4.2 should be on the search path, with JAVA\_HOME set correctly

## License

Ensure that you have updated your BEA License with the MobileAware Interaction Server, BEA WebLogic Edition product component details. The required license component information can be downloaded from the same download page as the software installer.

## Installation Procedure for Sun Solaris, RedHat Linux, and HP-UX

1. Download the appropriate platform installer:
  - For RedHat Linux, use the BEAMAInteractionServer814-linux.bin installer.
  - For Sun Solaris, use the BEAMAInteractionServer814-solaris.bin installer.
  - For HP-UX, use the BEAMAInteractionServer814-hpux.bin installer.
2. Open an xterm, telnet, or console window and run the appropriate platform MobileAware Interaction Server installation program as identified above.
3. The first stage of the installation is the Introduction. Please read the text and ensure that the installation environment meets the stated requirements. Press <Enter> to continue.
4. Next is the License Agreement. Read the license agreement text and enter the value **Y** if you accept the terms of the license agreement, or the value **N** if you do not.  
Note: this will cancel the installation after prompting you to confirm cancellation.
5. When Locate WebLogic Installation is shown, you must enter an absolute path to the location of the BEA WebLogic installation where the MobileAware Interaction Server should be installed. If BEA WebLogic is already installed, the installer will display the most recent <bea\_home> by default. Press <Enter> to accept the default location as shown.  
  
Alternatively, if you want to install the MobileAware Interaction Server into a different BEA WebLogic installation, enter the absolute path to the location of the appropriate BEA WebLogic installation and press <Enter>.  
Note: You must have write and execute permissions for the chosen installation folder.
6. Next is the Pre-Installation Summary. Review the displayed installation configuration settings to ensure they are correct. If you are satisfied with the configuration settings, press <Enter> to continue. Otherwise, type back to return to a previous step and modify the configuration settings.
7. The Installation Complete message will be displayed following a successful install. Press <Enter> to exit the installer.



## Installing the MobileAware Device Database

Please refer to the section *Installing the Device Database with the Device Installer* for instructions on installing the MobileAware Device Database.

## Configuration of a MobileAware Interaction Server-Enabled Web Application

Please refer to “Deploying an Application” in the *MobileAware Interaction Server, BEA WebLogic Edition Administration Guide* for details on:

- Creating the deployment environment for a mobilized web application
- Configuring the MobileAware Interaction Server servlet filter
- Configuring the web application’s Web Deployment Descriptor (web.xml file) for the MobileAware Interaction Server servlet filter

## Post-Installation Configuration and Use of the Administration Tools

Please refer to “Administration Console” in the *MobileAware Interaction Server, BEA WebLogic Edition Administration Guide* for a description of how to use the Administration Console to manage device profiles in the MobileAware Device Database.

Please refer to “Working With Diagnostics” in the *MobileAware Interaction Server, BEA WebLogic Edition User Guide* for information on configuring and using the Diagnostics tools.

## Installing the Device Database

### Introduction

The MobileAware Interaction Server requires a database, the MobileAware Device Database, to store device profile information. Currently, the MobileAware Device Database supports Oracle, MySQL, Postgres, PointBase, and SQL Server 2000, IBM DB2 Universal Database, and Sybase Adaptive Server Enterprise databases.

The following installation procedures assume an Oracle, MySQL, Postgres, PointBase, SQL Server 2000, IBM DB2, or Sybase database has already been installed and the administrator performing the installation is familiar with database creation.

The MobileAware Device Database can alternatively be configured to operate directly from an XML file. For configuration of the MobileAware Device Database to operate directly from an XML file, please refer to “Configuration of XML File-based MobileAware Device Database.”

After completing the MobileAware Device Database installation below, configure the `mis.properties` settings as described in the next chapter.

## About the Device Installer Tool

MobileAware has developed a GUI tool called the Device Installer that is used to perform both initial installations of the MobileAware Device Database, as well as installations of the MobileAware provided quarterly updates to the MobileAware Device Database.

**Note:** Note: Individual additions and modifications to an installed MobileAware Device Database are made using the Administration Console, which is documented in the MobileAware Interaction Server, BEA WebLogic Edition Administration Guide.

The Device Installer tool itself allows customers to:

- Create a new MobileAware Device Database from a MobileAware provided flat `DeviceRepository.xml` file
- Backup a customer’s existing MobileAware Device Database to an XML file
- Update a customer’s existing MobileAware Device Database with the MobileAware provided quarterly updates (the quarterly updates are also provided as a flat `DeviceRepository.xml` file)

When using the Device Installer tool to install the MobileAware provided quarterly updates, the tool:

- Backs up the customer’s existing device database to an XML file
- Detects and stores customer modifications to their existing device database
- Installs the new MobileAware provided device database
- Presents the customer with a list of modifications and allows the customer to re-apply each of them or accept the values provided in the device database update

## Locating the Device Installer Tool

The Device Installer tool can be found under the installation directory that was selected during the installation:

- For Windows, this will be:

`<install_directory>\applications\DeviceInstaller\MISDeviceInstaller.exe`

- For UNIX, this will be:

`<install_directory>/applications/DeviceInstaller/MISDeviceInstaller`

The “Install Complete” screen at the end of the MobileAware Interaction Server installation contained the full path name for the install directory for reference.

**Note:** The Device Installer is a GUI based application that must be run on a system with a windowing environment.

You may therefore run it in a Unix / Linux environment running X Windows, or on a Microsoft Windows environment.

The Device Installer connects directly to the database within which the Device Database is to be installed, so it is not necessary to run it on the same platform on which the MobileAware Interaction Server was installed.

## Pre-configuration for Support of IBM Universal DB2

If using the Device Installer Tool to install the MobileAware Device Database on IBM Universal DB 2, please copy the following driver files from `<ibm DB2`

`install_directory>\SQLLIB\java` (for example, `C:\Program Files\IBM\SQLLIB\java`) to `<install_directory>\applications\DeviceInstaller`:

- `db2jcc.jar`
- `db2jcc_license_cu.jar`

This will enable the Device Installer to install and/or update the MobileAware Device Database into a configured IBM Universal DB2 database.

## Pre-configuration for Support of SQL Server 2000

If using the Device Installer Tool to install the MobileAware Device Database on SQL Server 2000, please download the necessary JDBC drivers from:

<http://www.microsoft.com/downloads/details.aspx?FamilyID=86212d54-8488-481d-b46b-af29bb18e1e5&displaylang=en>

and then copy the following files to `<install_directory>\applications\DeviceInstaller`:

- `msbase.jar`
- `mssqlserver.jar`

- msutil.gar

This will enable the Device Installer to install and/or update the MobileAware Device Database into a configured Microsoft SQL Server 2000 Database.

## Device Installer Scenario 1: Installing a New MobileAware Device Database

The steps used to install a new MobileAware Device Database are shown below, along with sample screenshots:

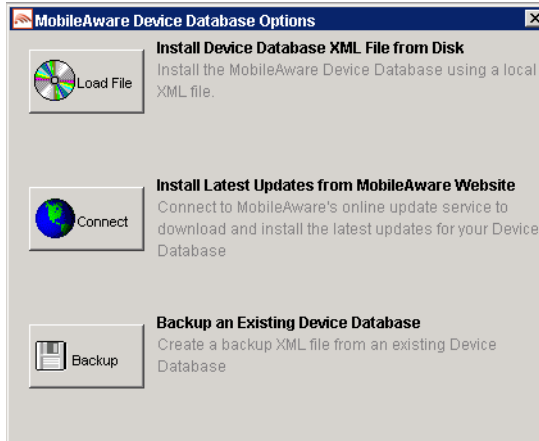
1. Create a database for the MobileAware Device Database and note the connection details. To complete the device database installation, you will need the database type, the database URL, and a valid user name and password for accessing the database.
2. Run MISDeviceInstaller.exe (Windows) or MISDeviceInstaller (Unix/Linux platforms) and the Device Installer Usage screen will appear. Click Continue.

**Figure 41 Device Installer Usage Screen**



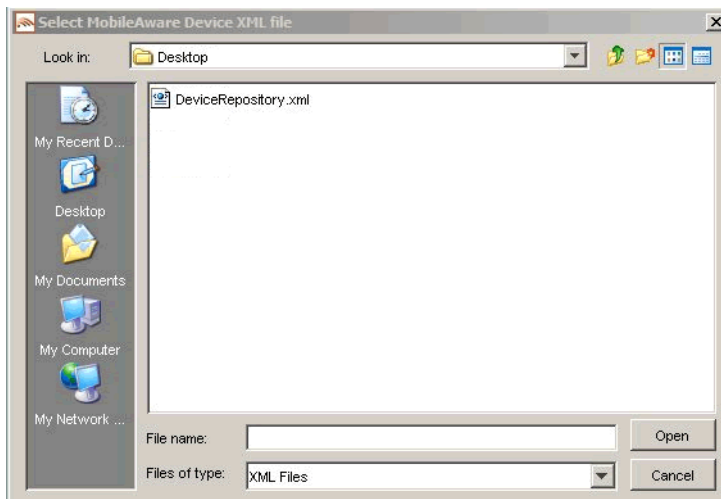
3. The MobileAware Device Database Options screen will appear. Click Load File to install the MobileAware Device Database from the DeviceRepository.xml file included with the MobileAware Interaction Server installer.

**Figure 42 MobileAware Device Database Options**

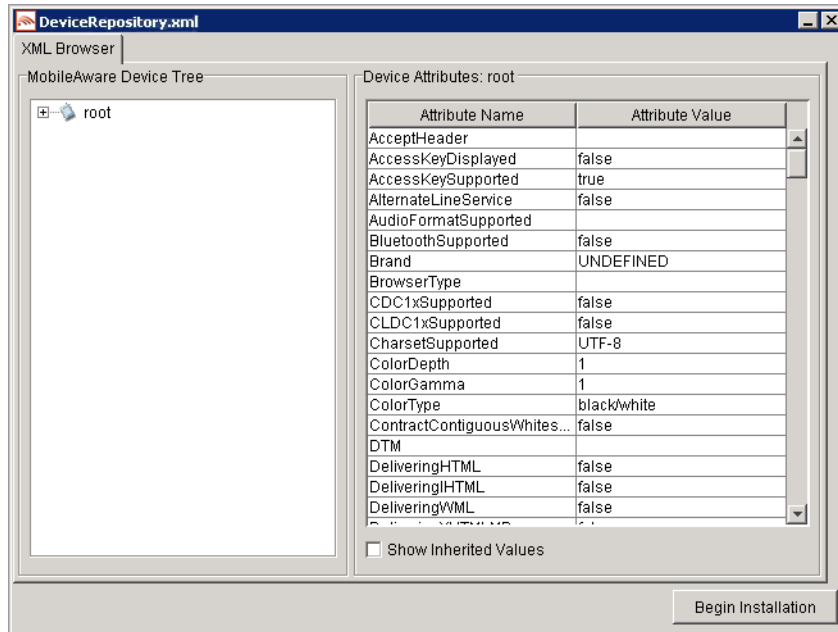


4. When the Select MIS Device XML file screen appears, choose a DeviceRepository.xml file to install and click Open. The DeviceRepository.xml file included with the MobileAware Interaction Server installer will be shown as the default for a new installation.

**Figure 43 Select MobileAware Device XML File Screen**



5. The DeviceRepository.xml screen shows the DeviceRepository.xml to be installed. The file has been converted into a hierarchical structure and provided as a preview of the MobileAware Device Database to be installed. Inherited values for each device can also be displayed by checking the show inherited values box. Click Begin Installation to proceed.

**Figure 44 DeviceRepository.xml Screen**

6. In the Database Connection Details screen, select the type of database from the Database Type drop down menu and enter the database connection details in the format shown. The Database URL, User Name, and Password should be available from your Database Administrator (DBA). The format for these URL's is displayed in the dialog and is also described below:

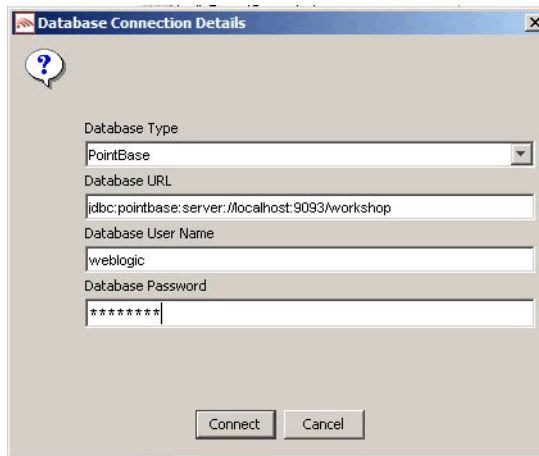
- For Oracle, set to:  
`jdbc:oracle:thin:@<oracle_host>:<oracle_port>:<oracle_database_name>`
- For MySQL, set to:  
`jdbc:mysql://<mysql-server-ip:port>/<db-name>?user=<connect-user>&password=<connect-password>`
- For Postgres, set to:  
`jdbc:postgresql://<postgres_machine>:<postgres_port>/<postgres_database_name>`
- For PointBase, set to:  
`jdbc:pointbase:server://<ip_address>:<port>/<SID>`
- For Sybase ASE, set to:  
`jdbc:sybase:Tds:<ip_address>:<port>/SID`

- For IBM DB2, set to:  
`jdbc:db2://<ip_address>:<port>/SID`
- For Microsoft SQL Server 2000:  
`jdbc:bea:sqlserver://<sqlserver_host>:<sqlserver_port>;databaseName=<sqlserver_database_name>`
- When using WebLogic database connection pool, set to:  
`jdbc:weblogic:pool:<poolname>`

**Example:** `deviceDB.url: jdbc:oracle:thin:@oracle_host:1521:mySID`

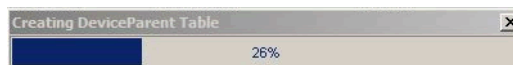
7. Click Connect. Once a successful connection is made the details are stored and will be remembered the next time the tool is run.

**Figure 45 Example of PointBase Connection Details screen**

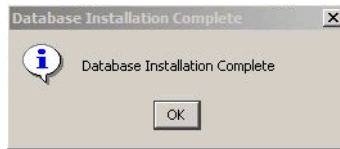


8. A progress bar shows the progress of the data installation.

**Figure 46 Creating Device Table Progress Bar**



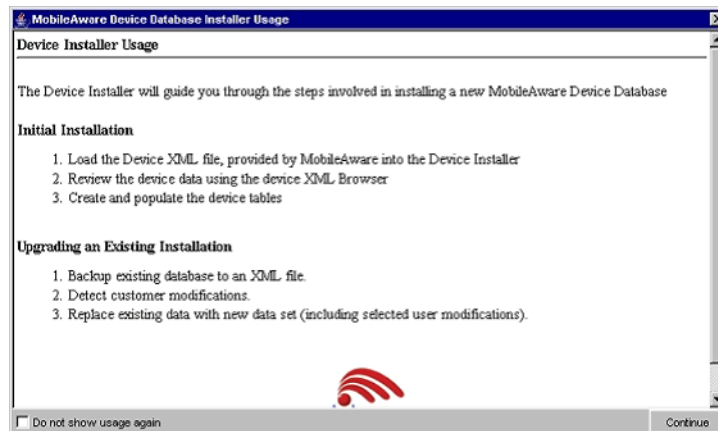
9. Click OK on the Database Installation Complete screen and then click Exit on the Device Installer screen to close the tool.

**Figure 47 Database Installation Complete**

## Device Installer Scenario 2: Using MobileAware's Online Update Service to Update the MobileAware Device Database

The steps used to connect to MobileAware's Online Update Service to update an existing MobileAware Device Database are described below.

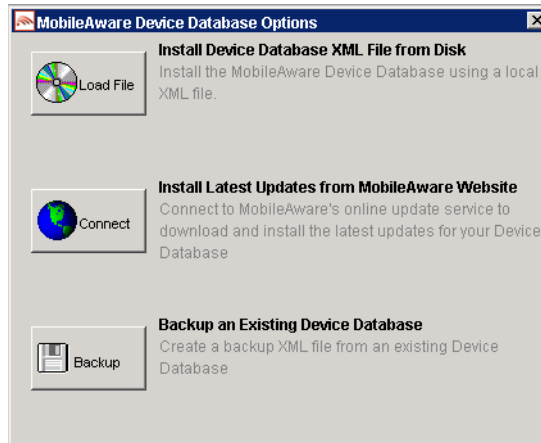
1. Run `MISDeviceInstaller.exe` (Windows) or `MISDeviceInstaller` (Unix/Linux platforms) and the Device Installer Usage screen will appear. Click Continue.

**Figure 48 Device Installer Usage Screen**

2. The MobileAware Device Database Options screen will appear. Click Connect to connect to MobileAware's online update service for the latest available `DeviceRepository.xml` file.



**Figure 49 MobileAware Device Database Options**



3. On the **Database Connection Details** screen, select the type of database from the **Database Type** drop down menu and enter the database connection details in the format shown. The Database URL, User Name, and Password should be available from your Database Administrator (DBA). The format for these URL's is displayed in the dialog and is also described below:

- For Oracle, set to:  
jdbc:oracle:thin:@<oracle\_host>:<oracle\_port>:<oracle\_database\_name>
- For MySQL, set to:  
jdbc:mysql://<mysql-server-ip:port>/<db-name>?user=<connect-user>&password=<connect-password>
- For Postgres, set to:  
jdbc:postgresql://<postgres\_machine>:<postgres\_port>/<postgres\_database\_name>
- For PointBase, set to:  
jdbc:pointbase:server://<ip\_address>:<port>/<SID>
- For Sybase ASE, set to:  
jdbc:sybase:Tds:<ip\_address>:<port>/SID
- For IBM DB2, set to:  
jdbc:db2://<ip\_address>:<port>/SID

- For Microsoft SQL Server 2000:  
`jdbc:bea:sqlserver://<sqlserver_host>:<sqlserver_port>;databaseName=<sqlserver_database_name>`

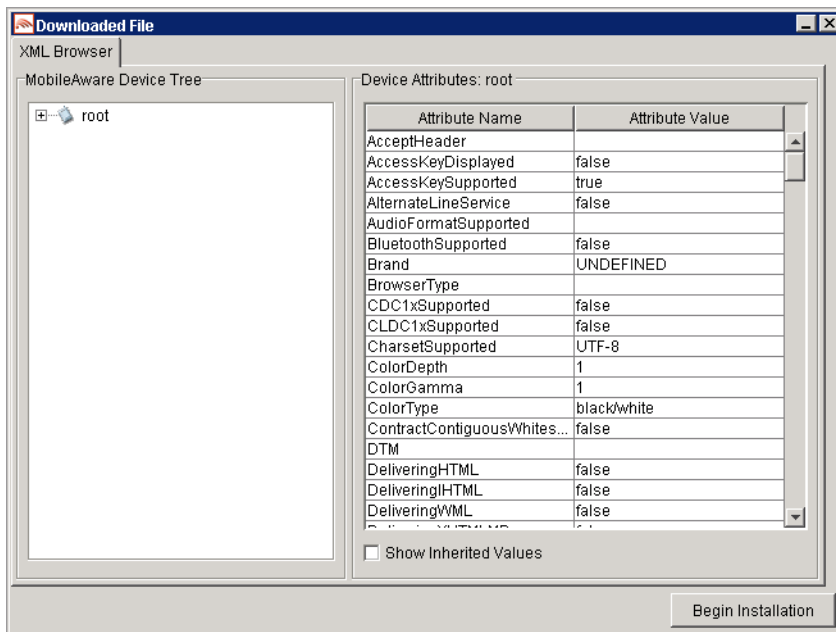
- When using WebLogic database connection pool, set to:

`jdbc:weblogic:pool:<poolname>`

**Example:** `deviceDB.url: jdbc:oracle:thin:@oracle_host:1521:mySID`

4. Click Connect. Once a successful connection is made the details are stored and will be remembered the next time the tool is run.
5. If you successfully connect and are authorized to receive the latest `DeviceRepository.xml` file, it will be downloaded and the next screen you will see is the Downloaded File screen shows the `DeviceRepository.xml` to be installed. The file has been converted into a hierarchical structure and provided as a preview of the MobileAware Device Database to be installed. Inherited values for each device can also be displayed by checking the `show inherited values` box. Click `Begin Installation` to proceed.

**Figure 50 Downloaded File Screen**



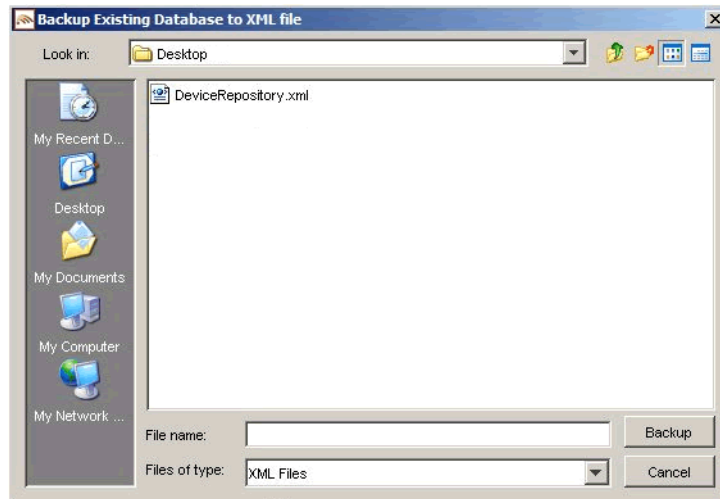
6. Re-enter Database Connection Details (may not be required):

On the Database Connection Details screen, select the type of database from the Database Type drop down menu and enter the database connection details in the format shown. The Database URL, User Name, and Password should be available from your Database Administrator (DBA). The format for these URL's is displayed in the dialog and is also described below:

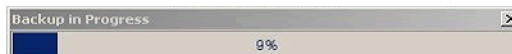
- For Oracle, set to:  
jdbc:oracle:thin:@<oracle\_host>:<oracle\_port>:<oracle\_database\_name>
- For MySQL, set to:  
jdbc:mysql://<mysql-server-ip:port>/<db-name>?user=<connect-user>&password=<connect-password>
- For Postgres, set to:  
jdbc:postgresql://<postgres\_machine>:<postgres\_port>/<postgres\_database\_name>
- For PointBase, set to:  
jdbc:pointbase:server://<ip\_address>:<port>/<SID>
- For Sybase ASE, set to:  
jdbc:sybase:Tds:<ip\_address>:<port>/SID
- For IBM DB2, set to:  
jdbc:db2://<ip\_address>:<port>/SID
- For Microsoft SQL Server 2000:  
jdbc:bea:sqlserver://<sqlserver\_host>:<sqlserver\_port>;databaseName=<sqlserver\_database\_name>
- When using WebLogic database connection pool, set to:  
jdbc:weblogic:pool:<poolname>

**Example:** deviceDB.url: jdbc:oracle:thin:@oracle\_host:1521:mySID

7. Click Connect. Once a successful connection is made the details are stored and will be remembered the next time the tool is run.
8. If an existing MobileAware Device Database is detected, the Backup Existing Database to XML file screen is shown and you are required to backup the existing device database to an XML file before proceeding. The created backup XML file will have the same structure as the DeviceRepository.xml file. This backup XML file will be used for detecting modifications later in the upgrade process. Enter a name for the XML file and click Backup.

**Figure 51 Backup Existing Device Database Screen**

9. A progress bar monitors the progress of the backup process. This may take up to 2 minutes depending on the connection.

**Figure 52 Backup Progress Bar**

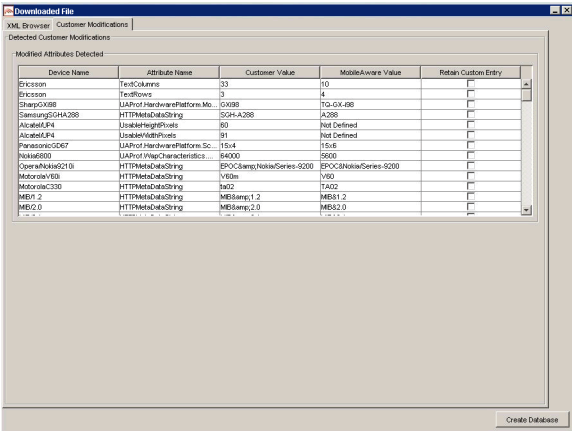
10. Detect Custom Devices/Attributes:

The backupDeviceRepository.xml and DeviceRepository.xml files are compared to allow a list of modifications to be presented to the user.

If no modifications are identified, the existing database will be replaced with the selected Device XML file. When the Device Installation Complete window appears, click OK and then click Exit to close the DeviceInstaller tool.

11. If modifications are detected, you will be asked to review the modifications before proceeding with the installation.
12. Once the detection process completes, a dialog box similar to the one shown below will appear showing the delta between the DeviceRepository.xml file to be installed and the existing MobileAware Device Database. You can now choose to re-apply any modifications that have been detected in the existing MobileAware Device Database by selecting the appropriate Retain Custom Entry checkboxes.

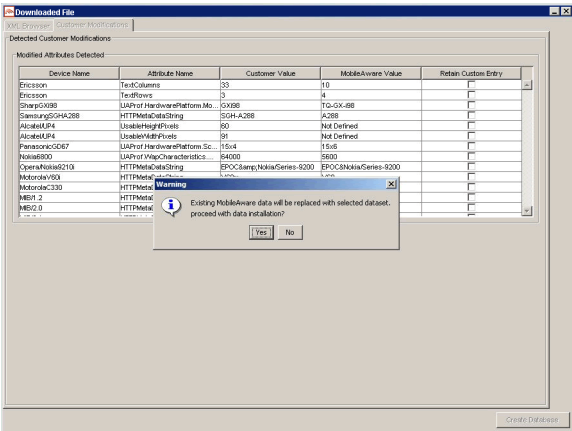
Figure 53 Comparison of Existing Download Data with New Data



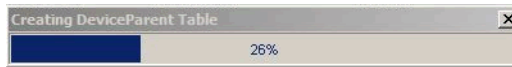
13. Create the database

After selecting any data that you wish to retain, click **Create Database**. You will see a **Warning** dialog box indicating that the MobileAware Device Database data will be replaced with the selected data set. Click **Yes** button to proceed with the installation.

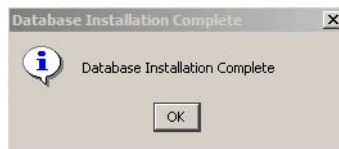
Figure 54 Overwrite Data Screen



14. A progress bar shows the progress of the data installation.

**Figure 55 Creating Device Table Progress Bar**

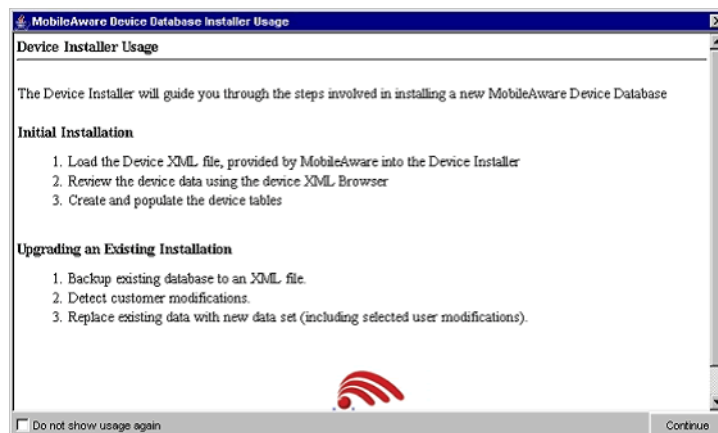
15. Click OK on the Database Installation Complete screen and then click Exit on the Device Installer screen to close the tool.

**Figure 56 Database Installation Complete**

## Device Installer Scenario 3: Updating an Existing MobileAware Device Database from an XML File

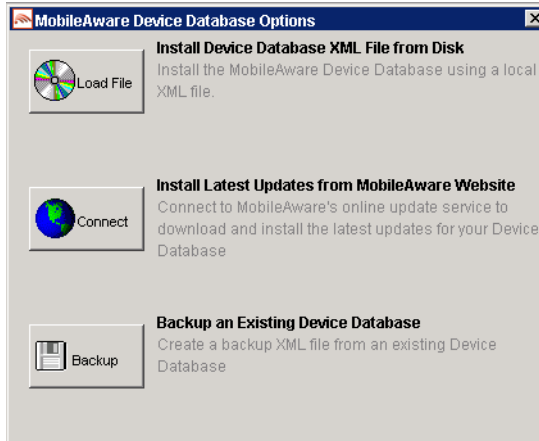
The steps used to update an existing MobileAware Device Database from an XML file are shown below, along with sample screenshots:

1. Run MISDeviceInstaller.exe (Windows) or MISDeviceInstaller (Unix/Linux platforms) and the Device Installer Usage screen will appear. Click Continue.

**Figure 57 Device Installer Usage Screen**

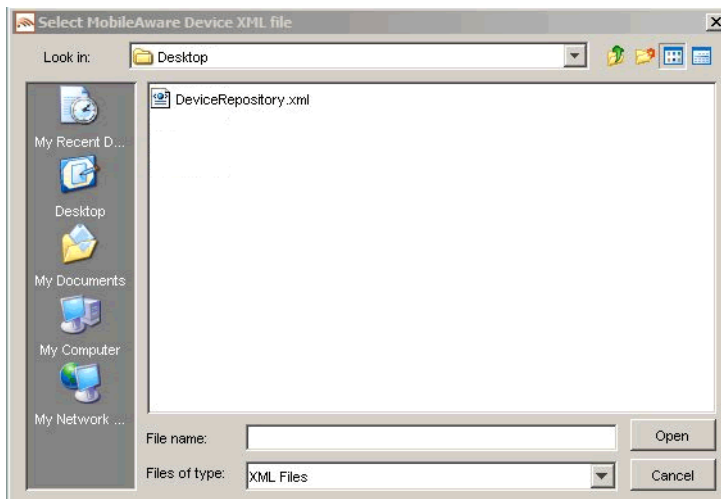
2. The MobileAware Device Database Options screen will appear. Click Load File to install the MobileAware Device Database from a local DeviceRepository.xml.

**Figure 58 MobileAware Device Database Options**

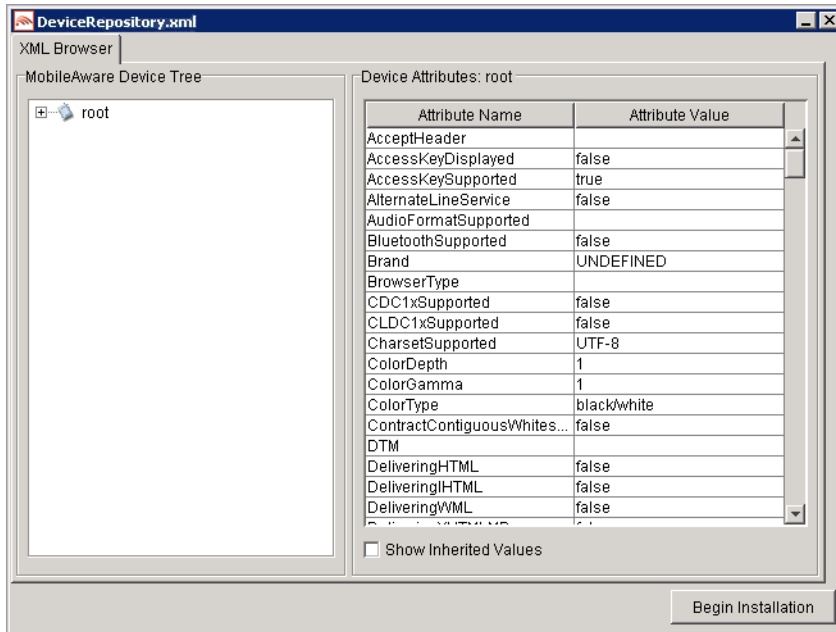


3. Then the Select MIS Device XML file screen appears, choose a DeviceRepository.xml file to install and click Open. The DeviceRepository.xml file included with the MobileAware Interaction Server installer will be shown as the default for a new installation.

**Figure 59 Select MobileAware Device XML File Screen**



4. The DeviceRepository.xml screen shows the DeviceRepository.xml to be installed. The file has been converted into a hierarchical structure and provided as a preview of the MobileAware Device Database to be installed. Inherited values for each device can also be displayed by checking the show inherited values box. Click Begin Installation to proceed.

**Figure 60 DeviceRepository.xml Screen**

- On the Database Connection Details screen, select the type of database from the Database Type drop down menu and enter the database connection details in the format shown. The Database URL, User Name, and Password should be available from your Database Administrator (DBA). The format for these URL's is displayed in the dialog and is also described below:

- For Oracle, set to:  
`jdbc:oracle:thin:@<oracle_host>:<oracle_port>:<oracle_database_name>`
- For MySQL, set to:  
`jdbc:mysql://<mysql-server-ip:port>/<db-name>?user=<connect-user>&password=<connect-password>`
- For Postgres, set to:  
`jdbc:postgresql://<postgres_machine>:<postgres_port>/<postgres_database_name>`
- For PointBase, set to:  
`jdbc:pointbase:server://<ip_address>:<port>/<SID>`
- For Sybase ASE, set to:  
`jdbc:sybase:Tds:<ip_address>:<port>/SID`

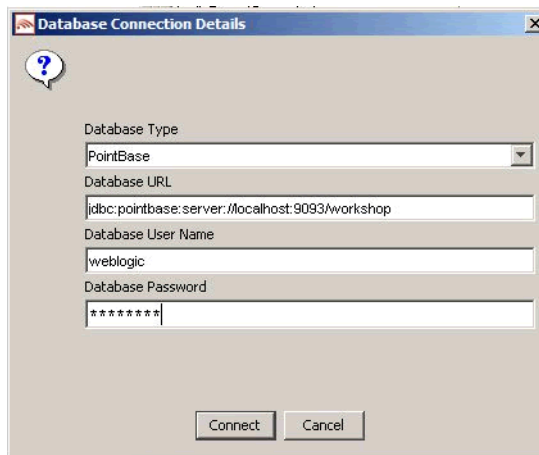


- For IBM DB2, set to:  
`jdbc:db2://<ip_address>:<port>/SID`
- For Microsoft SQL Server 2000:  
`jdbc:bea:sqlserver://<sqlserver_host>:<sqlserver_port>;databaseName=<sqlserver_database_name>`
- When using WebLogic database connection pool, set to:  
`jdbc:weblogic:pool:<poolname>`

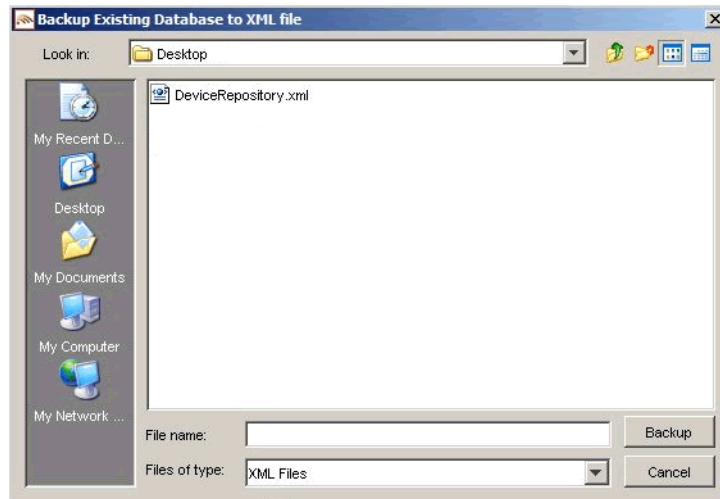
**Example:** `deviceDB.url: jdbc:oracle:thin:@oracle_host:1521:mySID`

6. Click Connect. Once a successful connection is made the details are stored and will be remembered the next time the tool is run.

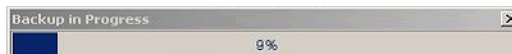
**Figure 61 Example of PointBase Connection Details screen**



7. If an existing MobileAware Device Database is detected, the Backup Existing Database to XML file screen is shown and you are required to backup the existing device database to an XML file before proceeding. The created backup XML file will have the same structure as the DeviceRepository.xml file. This backup XML file will be used for detecting modifications later in the upgrade process. Enter a name for the XML file and click Backup.

**Figure 62 Backup Existing Device Database Screen**

8. A progress bar monitors the progress of the backup process. This may take up to 2 minutes depending on the connection.

**Figure 63 Backup Progress Bar**

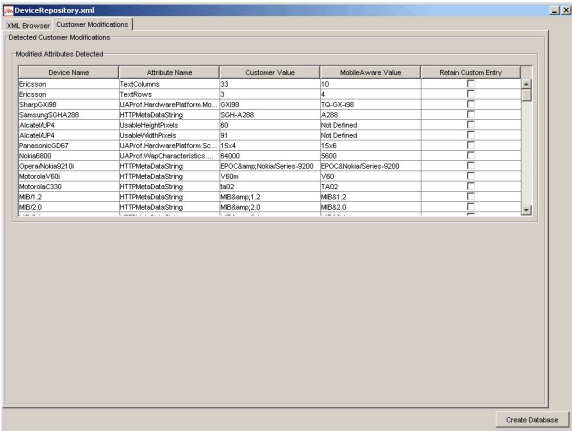
9. Detect Custom Devices/Attributes:

The backupDeviceRepository.xml and DeviceRepository.xml files are compared to allow a list of modifications to be presented to the user.

If no modifications are identified, the existing database will be replaced with the selected Device XML file. When the Device Installation Complete window appears, click OK and then click Exit to close the DeviceInstaller tool.

10. If modifications are detected, you will be asked to review the modifications before proceeding with the installation.
11. Once the detection process completes, a dialog box similar to the one shown below will appear showing the delta between the DeviceRepository.xml file to be installed and the existing MobileAware Device Database. You can now choose to re-apply any modifications that have been detected in the existing MobileAware Device Database by selecting the appropriate Retain Custom Entry checkboxes.

Figure 64 Comparison of Existing Data with New Data



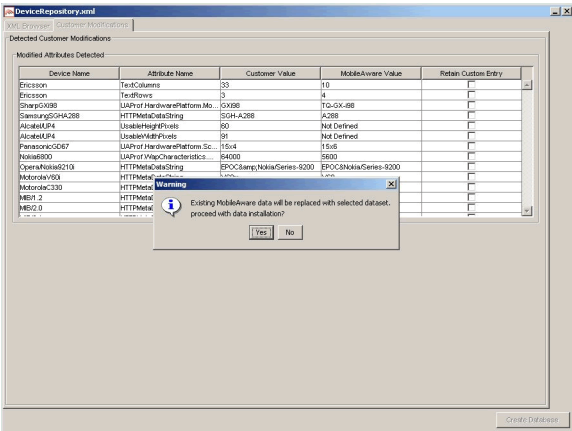
The screenshot shows the 'Device Repository' window with a tab titled 'Customer Modifications'. Below the tab is a section 'Modified Attributes Detected' containing a table with five columns: 'Device Name', 'Attribute Name', 'Customer Value', 'MobileAware Value', and 'Retain Custom Entry'. The table lists various devices and their attributes, with checkboxes in the 'Retain Custom Entry' column for each row.

Device Name	Attribute Name	Customer Value	MobileAware Value	Retain Custom Entry
Ericsson	TestColumns	33	10	<input type="checkbox"/>
Ericsson	TestRows	3	4	<input type="checkbox"/>
SharpGX98	UAProf HardwarePlatform Mo...	GX98	To-GX-98	<input type="checkbox"/>
SamsungSGH-A288	HTTPMetaDataSource	SGH-A288	A288	<input type="checkbox"/>
AlcatelLP4	UsableHeightPixels	80	Not Defined	<input type="checkbox"/>
AlcatelLP4	UsableWidthPixels	91	Not Defined	<input type="checkbox"/>
PanasonicC667	UAProf HardwarePlatform So...	TS4	TS4	<input type="checkbox"/>
Nokia600	UAProf WapCharacteristics...	6400	5600	<input type="checkbox"/>
OperaMini210	HTTPMetaDataSource	EPOCSharp/NokiaSeries-9200	EPOCSharp/NokiaSeries-9200	<input type="checkbox"/>
MotorolaV30	HTTPMetaDataSource	V30	V30	<input type="checkbox"/>
MotorolaC330	HTTPMetaDataSource	h30	TAC2	<input type="checkbox"/>
MB01.2	HTTPMetaDataSource	MB01.2	MB01.2	<input type="checkbox"/>
MB02.0	HTTPMetaDataSource	MB02.0	MB02.0	<input type="checkbox"/>

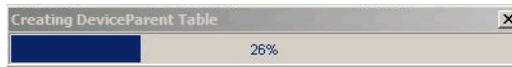
12. Create the database

After selecting any data that you wish to retain, click Create Database. You will see a Warning dialog box indicating that the MobileAware Device Database data will be replaced with the selected data set. Click Yes button to proceed with the installation.

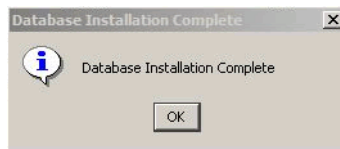
Figure 65 Overwrite Data Screen



13. A progress bar shows the progress of the data installation.

**Figure 66 Creating Device Table Progress Bar**

14. Click OK on the Database Installation Complete screen and then click Exit on the Device Installer screen to close the tool.

**Figure 67 Database Installation Complete**

## Device Installer Scenario 4: Backup an Existing MobileAware Device Database to an XML File

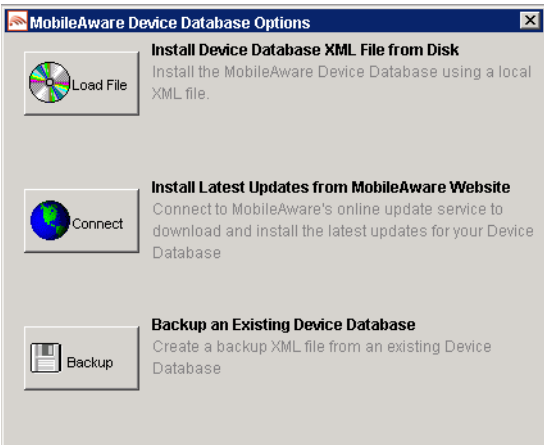
The steps used to backup an existing MobileAware Device Database are shown below, along with sample screenshots:

1. Run MISDeviceInstaller.exe (Windows) or MISDeviceInstaller (Unix/Linux platforms) and the Device Installer Usage screen will appear. Click Continue.

**Figure 68 Device Installer Usage Screen**

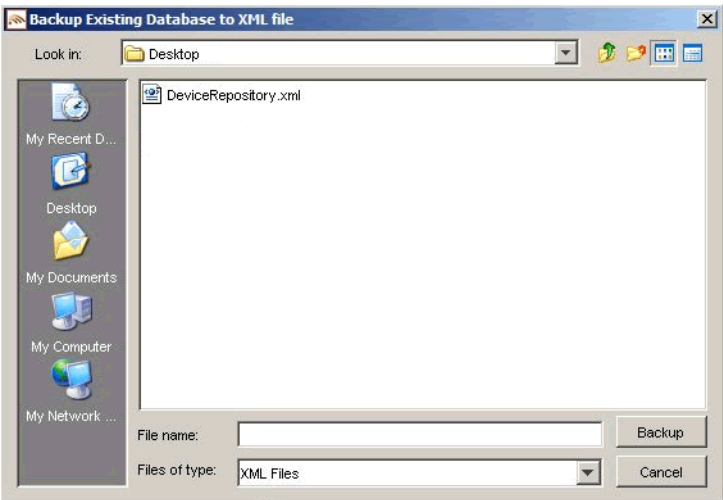
2. The MobileAware Device Database Options screen will appear. Click **Backup** to backup the installed MobileAware Device Database to an XML file.

Figure 69 MobileAware Device Database Options

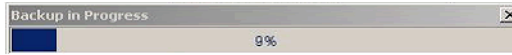


3. On the Backup Existing Database to XML file screen, enter a name for the XML file and click Backup to backup the existing device database to an XML file.

Figure 70 Backup Existing Device Database Screen



4. A progress bar monitors the progress of the backup process. This may take up to 2 minutes depending on the connection.

**Figure 71 Backup Progress Bar**

5. When the backup completes, exit the tool by select File > Exit.

## Configuring mis.properties Settings

The mis.properties file must be updated to reflect the Device Database connection details. This enables the MIS to connect to the Device Database to retrieve device profiles for use during content transformation.

**Note:** By default, MIS is configured to communicate to the standard BEA WebLogic Database Connection Pool. If you are using the standard BEA WebLogic Database Connection Pool, you can skip this section. You are only required to configure the mis.properties settings manually if you want to use an alternative database or you have a custom domain that is not using the default BEA WebLogic Database Connection Pool.

## The mis.properties File

The configuration file used by the MobileAware Interaction Server that contains the device database connection settings is the mis.properties file.

This file can be found in the WEB-INF/classes folder of the web application (e.g. for the sample Mobility Portal application it is located at:

```
<bea>\weblogic81\mobileaware\samples\BEAWorkshop\maportal\WEB-INF\classes\
```

It is a plain text file that can be edited in any text editor.

This section describes configuration settings for the mis.properties file.

## Configuring the MobileAware Device Database Connection

The following device database properties must be configured in order for MobileAware Interaction Server to successfully communicate with the MobileAware Device Database when using an external database:

Property	Description
deviceDB.driver	<p>Location of the JDBC driver to be used by MobileAware interaction Server to gain access to the database.</p> <p>This property also has the effect of informing MobileAware Interaction Server which database it is connected to.</p> <p>For Oracle, set to: oracle.jdbc.driver.OracleDriver</p> <p>For MySQL, set to: org.gjt.mm.mysql.Driver</p> <p>For Postgres, set to: org.postgresql.Driver</p> <p>For PointBase, set to: com.pointbase.jdbc.jdbcUniversalDriver</p> <p>For SQL Server (with MIS deployed on BEA WebLogic only), set to: weblogic.jdbc.sqlserver.SQLServerDriver</p> <p>For Sybase ASE set to: com.sybase.jdbc2.jdbc.SybDriver</p> <p>For IBM DB2 Universal Database set to: com.ibm.db2.jcc.DB2Driver</p> <p>To configure MIS to use the BEA WebLogic database connection pool: weblogic.jdbc.pool.Driver</p> <p>Example: deviceDB.driver:oracle.jdbc.driver.OracleDriver</p>

deviceDB.url	<p>The URL to use to access the Device Database.</p> <p>For Oracle, set to:  jdbc:oracle:thin:@&lt;oracle_host&gt;:&lt;oracle_port&gt;:&lt;oracle_database_name&gt;</p> <p>For MySQL, set to:  jdbc:mysql://&lt;mysql-server-ip:port&gt;/&lt;db-name&gt;?user=&lt;connect-user&gt;&amp;password=&lt;connect-password&gt;</p> <p>For Postgres, set to:  jdbc:postgresql://&lt;postgres_machine&gt;:&lt;postgres_port&gt;/&lt;postgres_database_name&gt;</p> <p>For PointBase, set to:  jdbc:pointbase:server://&lt;pointbase_machine&gt;:&lt;pointbase_port&gt;/cajun</p> <p>For SQLServer (with MIS deployed on BEA WebLogic only), set to:  jdbc:bea:sqlserver://&lt;sqlserver_host&gt;:&lt;sqlserver_port&gt;;databaseName=&lt;sqlserver_database_name&gt;</p> <p>For Sybase ASE set to: jdbc:sybase:Tds:&lt;ip_address&gt;:&lt;port&gt;/SID</p> <p>For IBM DB2 Universal Database set to:  jdbc:db2://&lt;ip_address&gt;:&lt;port&gt;/SID</p> <p>When using WebLogic database connection pool, set to:  jdbc:weblogic:pool:&lt;poolname&gt;</p> <p>Example: deviceDB.url: jdbc:oracle:thin:@oracle_host:1521:mySID</p>
deviceDB.user	<p>Username used by MobileAware Interaction Server to access the database server when user and password authentication is required.</p> <p><b>Note:</b> For MySQL, this property is left blank.</p> <p>Example: deviceDB.user: user</p>
deviceDB.password	<p>Password of user used by MobileAware Interaction Server to access the database server when user and password authentication is required.</p> <p><b>Note:</b> For MySQL, this property is left blank.</p> <p>Example: deviceDB.password: password</p>
deviceDB.maxDBConnections	<p>A numeric value indicating the number of concurrent database connections in the database pool. This is used to control the number of concurrent database connections and licenses required by the MobileAware Interaction Server. Defaults to 10. See “About Connection Pools” below for more information.</p> <p>Example: deviceDB.maxDBConnections: 10</p>



deviceDB.waitTime	A numeric value indicating (in milliseconds) the time to wait for a connection from the database pool. Defaults to 5000. Example: deviceDB.waitTime: 5000
deviceDB.increment	A numeric value indicating the number of connections to add to the pool if there are no connections currently available. If the maximum number of connections in the pool has been reached then no new connections will be added to the pool. Defaults to 1 Example: deviceDB.increment: 1

## About Connection Pools

A dynamic web site often generates HTML pages from information stored in a database. Each request for a page results in a database access. Connecting to a database is time consuming since the database must allocate communication and memory resources as well as authenticates the user and set up the corresponding security context. Setting up the individual connections can become a bottleneck.

Establishing the connection once and using the same connection for subsequent requests can therefore dramatically improve the performance of a database driven web application.

Connection pooling is a technique used to avoid the overhead of making a new database connection every time an application or server object requires access to a database. Rather than making and breaking connections as required, a "pool" of database connections is maintained by the system on the server. When MobileAware Interaction Server needs a database connection, it simply requests an available one from the pool - if none is available, a new one is created & added to the pool.

The connection pool not only grows to specified limits, but also contracts as required, closing connections that have not been used for a specified time. This avoids taking up system resources by simply holding connections that are not currently required. This also handles databases which "time-out" their connections, and prevents handing a "stale" connection to an application object.

## Configuration of XML File-based MobileAware Device Database

To configure MIS to use an XML File-based MobileAware Device Database instead of connecting to an external database (e.g. Oracle, MySQL) where the MobileAware Device Database has been installed, the database settings must be defined properly in the mis.properties file associated with the web application.

1. Locate the mis.properties file for your web application (e.g. for the sample Mobility Portal application, it is located at:  
<bea>\weblogic81\mobileaware\samples\BEAWorkshop\maportal\WEB-INF\classes\) and open it in a text editor.

2. Look for the Device Repository Type setting in the mis.properties file, similar to below:

```
#####
#
# Device Repository Type
# -----
# This setting indicates whether the MobileAware Device Database is
# deployed as an XML file or installed into a JDBC database.
# Possible values are: xml and db
#
# If not specified, db is assumed.
#deviceRepositoryType: xml
```

3. Uncomment the last line so that it now reads:

```
deviceRepositoryType: xml
```

4. Look for the XML Device Repository File Location setting in the mis.properties file, similar to below:

```
#####
#
# XML Device Repository File Location
# -----
# This setting indicates the location of the Device Repository XML file
# This setting must be set to the location of the xml file or the
# classpath will be checked (see deviceXML.resourceName)
#
# Example:
```

```
#C:\\bea81sp3\\weblogic81\\mobileaware\\database\\DeviceRepository.xml
#
#deviceXML.location:
C:\\bea81sp3\\weblogic81\\mobileaware\\database\\DeviceRepository.xml
```

5. Uncomment the 'deviceXML.location:' line and change the indicated location to the actual location of the DeviceRepository.xml file. The DeviceRepository.xml file included with MobileAware Interaction Server is located at:

```
<bea>weblogic81\\mobileaware\\database\\DeviceRepository.xml. For example,
deviceXML.location:
C:\\bea81sp3\\weblogic81\\mobileaware\\database\\DeviceRepository.xml
```

6. Look for the XML Device Repository Resource Name setting in the mis.properties file, similar to below

```
# XML Device Repository Resource Name
# -----
# This setting indicates the name of the Device Repository XML file that
# should be used in the classpath.
#
# The default is "/DeviceRepository.xml"
#
# Example: deviceXML.resourceName: /DeviceRepository.xml
deviceXML.resourceName: /DeviceRepository.xml
```

7. If the XML file to be used is not named DeviceRepository.xml, uncomment the 'deviceXML.resourceName:' line and change the indicated resource name to reflect the actual name of the XML file to be used. By default, DeviceRepository.xml is assumed.
8. Save the mis.properties file.
9. In production environment, you must now use the BEA WebLogic Administration Console to redeploy your web application. In a development environment, the web application can simply be redeployed directly from within BEA WebLogic Workshop.

## Next Steps

Now that you have successfully installed the MobileAware Interaction Server, BEA WebLogic Edition, you are almost ready to begin mobilizing your own web applications and portal projects.

Before you do, it is recommended that you go through the BEA Sample Workshop Mobility Project Guide and the BEA Sample Mobility Portal Guide. The BEA Sample Workshop Mobility Project Guide provides a step-by-step exercise in mobilizing a sample workshop application, while the BEA Sample Mobility Portal Guide illustrates the features of a Mobilized BEA Portal Framework.

